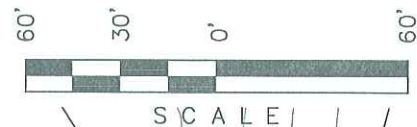


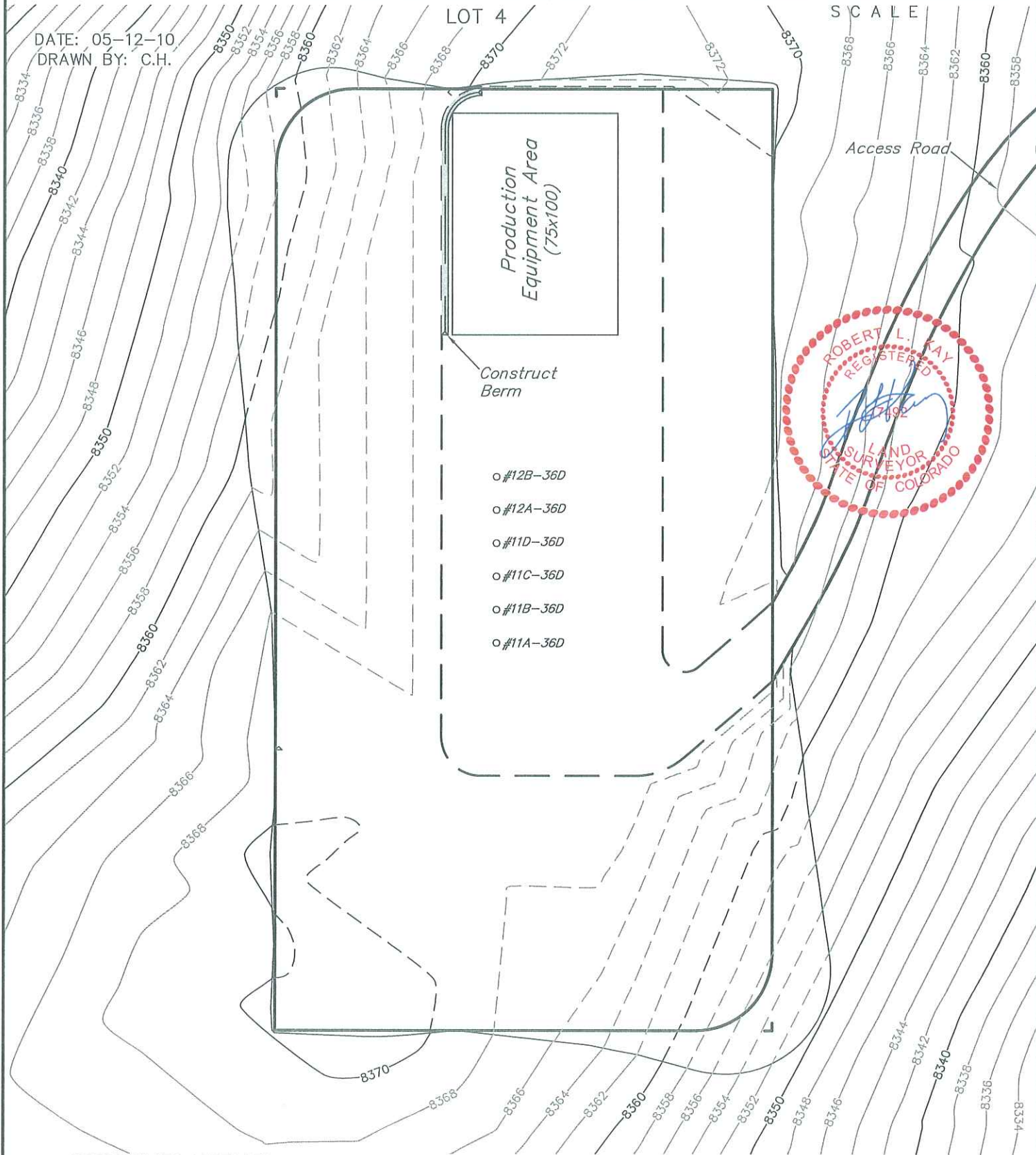
PETROLEUM DEVELOPMENT CORP.
RECLAMATION PAD & PROD. EQUIPMENT LAYOUT FOR
PUCKETT #11A-36D, #11B-36D, #11C-36D,
#11D-36D, #12A-36D & #12B-36D
SECTION 36, T6S, R97W, 6th P.M.

SHEET 5 of 9



DATE: 05-12-10
 DRAWN BY: C.H.

LOT 4



APPROXIMATE ACREAGES
 TOTAL RECLAIMED AREA = ± 0.751 ACRES
 UN-RECLAIMED AREA = ± 1.800 ACRES

UINTAH ENGINEERING & LAND SURVEYING
 85 So. 200 East * Vernal, Utah 84078 * (435) 789-1017

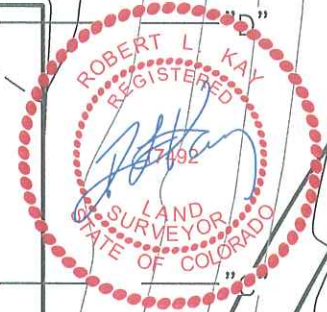
PETROLEUM DEVELOPMENT CORP.
 RECLAMATION PAD & PROD. EQUIPMENT LAYOUT FOR
 PUCKETT #11A-36D, #11B-36D, #11C-36D,
 #11D-36D, #12A-36D & #12B-36D
 SECTION 36, T6S, R97W, 6th P.M.

SHEET 6 of 9



LOT 4

DATE: 05-12-10
 DRAWN BY: C.H.



Construct
 Berm

Access Road

- #12B-36D
- #12A-36D
- #11D-36D
- #11C-36D
- #11B-36D
- #11A-36D

APPROXIMATE ACREAGES

TOTAL RECLAIMED AREA = ± 0.751 ACRES
 UN-RECLAIMED AREA = ± 1.800 ACRES

UINTAH ENGINEERING & LAND SURVEYING
 85 So. 200 East * Vernal, Utah 84078 * (435) 789-1017

1" = 40'
X-Section
Scale
1" = 100'

DATE: 05-12-10
DRAWN BY: C.H.

PETROLEUM DEVELOPMENT CORP.

FINAL RECLAMATION CROSS SECTIONS FOR

PUCKETT #11A-36D, #11B-36D, #11C-36D,

#11D-36D, #12A-36D & #12B-36D

SECTION 36, T6S, R97W, 6th P.M.

LOT 4

SHEET 7 of 9

