

Project: Mesa  
 Site: NW Sec 36-T6S-R97W  
 Well: Puckett 11A-36D  
 Wellbore: DD  
 Design: Plan #1



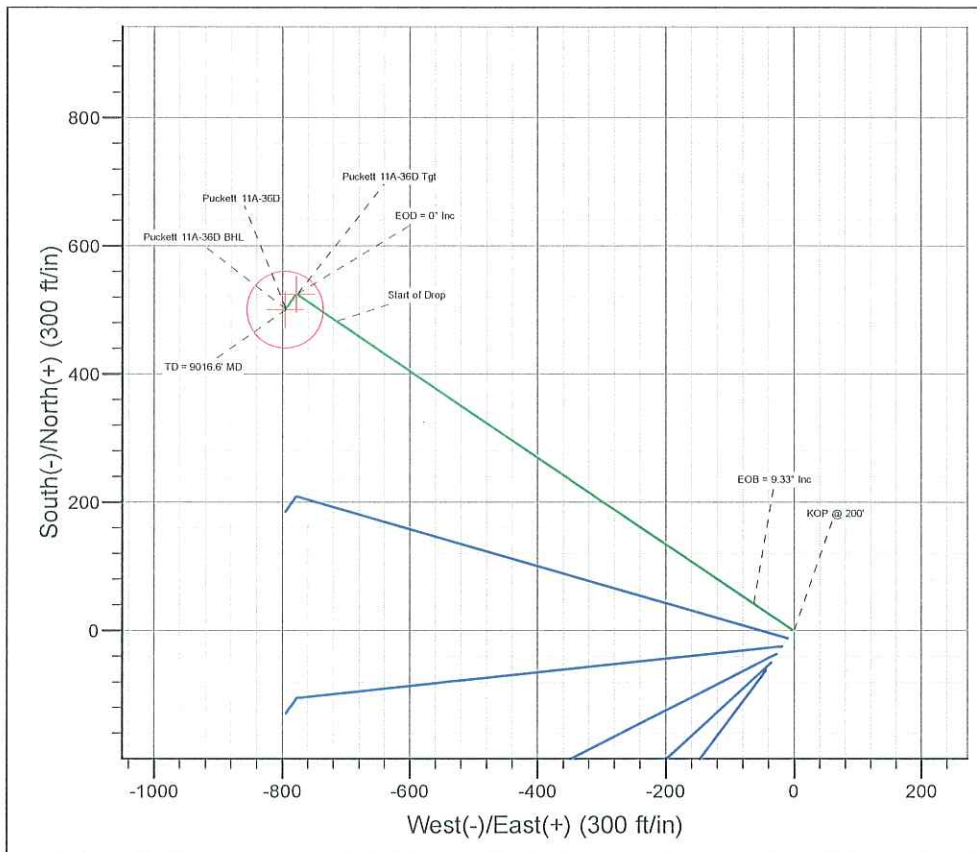
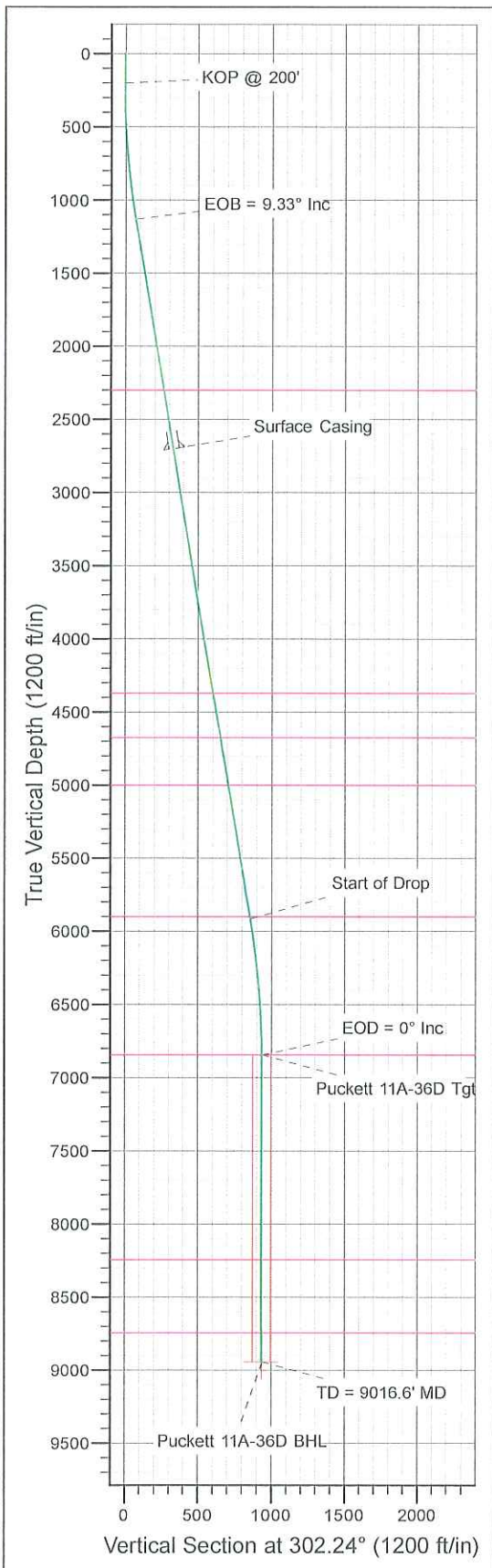
Azimuths to True North  
 Magnetic North: 10.56°

Magnetic Field  
 Strength: 52307.2snT  
 Dip Angle: 65.72°  
 Date: 2010/05/27  
 Model: IGRF2010-14

WELL DETAILS: Puckett 11A-36D

Ground Level: 8375.0  
 Easting: 2245201.15    Latitude: 39.485061    Longitude: -108.174661    Slot

+N/-S    +E/-W    Northing  
 0.0    0.0    1612674.48



ANNOTATIONS

TVD	MD	Annotation
200.0	200.0	KOP @ 200'
1128.9	1133.0	EOB = 9.33° Inc
5915.1	5983.4	Start of Drop
6844.0	6916.4	EOD = 0° Inc
8944.0	9016.6	TD = 9016.6' MD

FORMATION TOP DETAILS

TVDPath	MDPath	Formation
2299.0	2318.8	Wasatch
4369.0	4416.6	Wasatch "G" Sand
4674.0	4725.6	Fort Union
4999.0	5055.0	Base Fort Union
5899.0	5967.1	Mesaverde/Williams Fk
6844.0	6916.4	Top Gas Cell
8244.0	8316.5	Cameo
8744.0	8816.6	Rollins

FORMATION DETAILS

Sec	MD	Inc	Azi	TVD	+N/-S	+E/-W	DLeg	TFace	VSec	Target
1	0.0	0.00	0.00	0.0	0.0	0.0	0.00	0.00	0.0	
2	200.0	0.00	0.00	200.0	0.0	0.0	0.00	0.00	0.0	
3	1133.0	9.33	304.07	1128.9	42.5	-62.8	1.00	304.07	75.8	
4	5983.4	9.33	304.07	5915.1	482.9	-714.2	0.00	0.00	861.7	
5	6916.4	0.00	0.00	6844.0	525.4	-777.0	1.00	180.00	937.5	Puckett 11A-36D Tgt
6	7274.2	0.89	215.04	7201.7	523.1	-778.6	0.25	215.04	937.6	
7	9016.6	0.89	215.04	8944.0	500.8	-794.2	0.00	0.00	939.0	Puckett 11A-36D BHL

WELLBORE TARGET DETAILS (LAT/LONG)

Name	TVD	+N/-S	+E/-W	Latitude	Longitude	Shape
Puckett 11A-36D Tgt	6844.0	525.4	-777.0	39.486503	-108.177414	Point
Puckett 11A-36D BHL	8944.0	500.8	-794.2	39.486436	-108.177475	Circle (Radius: 60.0)

CASING DETAILS

TVD	MD	Name	Size
2700.0	2725.2	Surface Casing	

Plan: Plan #1 (Puckett 11A-36D/DD)

Created By: Jon Schweigert    Date: 15:49, May 27 2010  
 Checked: \_\_\_\_\_    Date: \_\_\_\_\_  
 Reviewed: \_\_\_\_\_    Date: \_\_\_\_\_  
 Approved: \_\_\_\_\_    Date: \_\_\_\_\_



<b>Database:</b> RMR1 Database	<b>Local Co-ordinate Reference:</b> Well Puckett 11A-36D
<b>Company:</b> Petroleum Development Corp.	<b>TVD Reference:</b> Puckett 11A-36D KBE @ 8399.0ft (H&P 318)
<b>Project:</b> Mesa	<b>MD Reference:</b> Puckett 11A-36D KBE @ 8399.0ft (H&P 318)
<b>Site:</b> NW Sec 36-T6S-R97W	<b>North Reference:</b> True
<b>Well:</b> Puckett 11A-36D	<b>Survey Calculation Method:</b> Minimum Curvature
<b>Wellbore:</b> DD	
<b>Design:</b> Plan #1	

<b>Project</b> Mesa	
<b>Map System:</b> US State Plane 1983	<b>System Datum:</b> Mean Sea Level
<b>Geo Datum:</b> North American Datum 1983	
<b>Map Zone:</b> Colorado Central Zone	

<b>Site</b> NW Sec 36-T6S-R97W		
<b>Site Position:</b>	<b>Northing:</b> 1,612,674.48 ft	<b>Latitude:</b> 39.485061
<b>From:</b> Lat/Long	<b>Easting:</b> 2,245,201.15 ft	<b>Longitude:</b> -108.174661
<b>Position Uncertainty:</b> 0.0 ft	<b>Slot Radius:</b>	<b>Grid Convergence:</b> -1.69 °

<b>Well</b> Puckett 11A-36D		
<b>Well Position</b> +N/-S 0.0 ft	<b>Northing:</b> 1,612,674.47 ft	<b>Latitude:</b> 39.485061
+E/-W 0.0 ft	<b>Easting:</b> 2,245,201.15 ft	<b>Longitude:</b> -108.174661
<b>Position Uncertainty</b> 0.0 ft	<b>Wellhead Elevation:</b>	<b>Ground Level:</b> 8,375.0 ft

<b>Wellbore</b> DD					
<b>Magnetics</b>	<b>Model Name</b>	<b>Sample Date</b>	<b>Declination (°)</b>	<b>Dip Angle (°)</b>	<b>Field Strength (nT)</b>
	IGRF2010-14	2010/05/27	10.56	65.72	52,307

<b>Design</b> Plan #1				
<b>Audit Notes:</b>				
<b>Version:</b>	<b>Phase:</b> PROTOTYPE	<b>Tie On Depth:</b> 0.0		
<b>Vertical Section:</b>	<b>Depth From (TVD) (ft)</b>	<b>+N/-S (ft)</b>	<b>+E/-W (ft)</b>	<b>Direction (°)</b>
	0.0	0.0	0.0	302.24

Plan Sections										
Measured Depth (ft)	Inclination (°)	Azimuth (°)	Vertical Depth (ft)	+N/-S (ft)	+E/-W (ft)	Dogleg Rate (°/100ft)	Build Rate (°/100ft)	Turn Rate (°/100ft)	TFO (°)	Target
0.0	0.00	0.00	0.0	0.0	0.0	0.00	0.00	0.00	0.00	
200.0	0.00	0.00	200.0	0.0	0.0	0.00	0.00	0.00	0.00	
1,133.0	9.33	304.07	1,128.9	42.5	-62.8	1.00	1.00	0.00	304.07	
5,983.4	9.33	304.07	5,915.1	482.9	-714.2	0.00	0.00	0.00	0.00	
6,916.4	0.00	0.00	6,844.0	525.4	-777.0	1.00	-1.00	0.00	180.00	Puckett 11A-36D Tgt
7,274.2	0.89	215.04	7,201.7	523.1	-778.6	0.25	0.25	-40.52	215.04	
9,016.6	0.89	215.04	8,944.0	500.8	-794.2	0.00	0.00	0.00	0.00	Puckett 11A-36D BHL

<b>Database:</b>	RMR1 Database	<b>Local Co-ordinate Reference:</b>	Well Puckett 11A-36D
<b>Company:</b>	Petroleum Development Corp.	<b>TVD Reference:</b>	Puckett 11A-36D KBE @ 8399.0ft (H&P 318)
<b>Project:</b>	Mesa	<b>MD Reference:</b>	Puckett 11A-36D KBE @ 8399.0ft (H&P 318)
<b>Site:</b>	NW Sec 36-T6S-R97W	<b>North Reference:</b>	True
<b>Well:</b>	Puckett 11A-36D	<b>Survey Calculation Method:</b>	Minimum Curvature
<b>Wellbore:</b>	DD		
<b>Design:</b>	Plan #1		

**Planned Survey**

Measured Depth (ft)	Inclination (°)	Azimuth (°)	Vertical Depth (ft)	Subsea Depth (ft)	+N/-S (ft)	+E/-W (ft)	Vertical Section (ft)	Dogleg Rate (°/100ft)	Build Rate (°/100ft)	Turn Rate (°/100ft)
0.0	0.00	0.00	0.0	-8,399.0	0.0	0.0	0.0	0.00	0.00	0.00
100.0	0.00	0.00	100.0	-8,299.0	0.0	0.0	0.0	0.00	0.00	0.00
<b>KOP @ 200'</b>										
200.0	0.00	0.00	200.0	-8,199.0	0.0	0.0	0.0	0.00	0.00	0.00
300.0	1.00	304.07	300.0	-8,099.0	0.5	-0.7	0.9	1.00	1.00	0.00
400.0	2.00	304.07	400.0	-7,999.0	2.0	-2.9	3.5	1.00	1.00	0.00
500.0	3.00	304.07	499.9	-7,899.1	4.4	-6.5	7.8	1.00	1.00	0.00
600.0	4.00	304.07	599.7	-7,799.3	7.8	-11.6	13.9	1.00	1.00	0.00
700.0	5.00	304.07	699.4	-7,699.6	12.2	-18.1	21.8	1.00	1.00	0.00
800.0	6.00	304.07	798.9	-7,600.1	17.6	-26.0	31.4	1.00	1.00	0.00
900.0	7.00	304.07	898.3	-7,500.7	23.9	-35.4	42.7	1.00	1.00	0.00
1,000.0	8.00	304.07	997.4	-7,401.6	31.2	-46.2	55.7	1.00	1.00	0.00
1,100.0	9.00	304.07	1,096.3	-7,302.7	39.5	-58.4	70.5	1.00	1.00	0.00
<b>EOB = 9.33° Inc</b>										
1,133.0	9.33	304.07	1,128.9	-7,270.1	42.5	-62.8	75.8	1.00	1.00	0.00
1,200.0	9.33	304.07	1,195.0	-7,204.0	48.5	-71.8	86.6	0.00	0.00	0.00
1,300.0	9.33	304.07	1,293.7	-7,105.3	57.6	-85.2	102.8	0.00	0.00	0.00
1,400.0	9.33	304.07	1,392.3	-7,006.7	66.7	-98.6	119.0	0.00	0.00	0.00
1,500.0	9.33	304.07	1,491.0	-6,908.0	75.8	-112.1	135.2	0.00	0.00	0.00
1,600.0	9.33	304.07	1,589.7	-6,809.3	84.9	-125.5	151.4	0.00	0.00	0.00
1,700.0	9.33	304.07	1,688.4	-6,710.6	93.9	-138.9	167.6	0.00	0.00	0.00
1,800.0	9.33	304.07	1,787.1	-6,611.9	103.0	-152.4	183.8	0.00	0.00	0.00
1,900.0	9.33	304.07	1,885.7	-6,513.3	112.1	-165.8	200.0	0.00	0.00	0.00
2,000.0	9.33	304.07	1,984.4	-6,414.6	121.2	-179.2	216.2	0.00	0.00	0.00
2,100.0	9.33	304.07	2,083.1	-6,315.9	130.3	-192.7	232.5	0.00	0.00	0.00
2,200.0	9.33	304.07	2,181.8	-6,217.2	139.4	-206.1	248.7	0.00	0.00	0.00
2,300.0	9.33	304.07	2,280.4	-6,118.6	148.4	-219.5	264.9	0.00	0.00	0.00
<b>Wasatch</b>										
2,318.8	9.33	304.07	2,299.0	-6,100.0	150.1	-222.0	267.9	0.00	0.00	0.00
2,400.0	9.33	304.07	2,379.1	-6,019.9	157.5	-233.0	281.1	0.00	0.00	0.00
2,500.0	9.33	304.07	2,477.8	-5,921.2	166.6	-246.4	297.3	0.00	0.00	0.00
2,600.0	9.33	304.07	2,576.5	-5,822.5	175.7	-259.8	313.5	0.00	0.00	0.00
2,700.0	9.33	304.07	2,675.2	-5,723.8	184.8	-273.2	329.7	0.00	0.00	0.00
<b>Surface Casing</b>										
2,725.2	9.33	304.07	2,700.0	-5,699.0	187.1	-276.6	333.8	0.00	0.00	0.00
2,800.0	9.33	304.07	2,773.8	-5,625.2	193.8	-286.7	345.9	0.00	0.00	0.00
2,900.0	9.33	304.07	2,872.5	-5,526.5	202.9	-300.1	362.1	0.00	0.00	0.00
3,000.0	9.33	304.07	2,971.2	-5,427.8	212.0	-313.5	378.3	0.00	0.00	0.00
3,100.0	9.33	304.07	3,069.9	-5,329.1	221.1	-327.0	394.5	0.00	0.00	0.00
3,200.0	9.33	304.07	3,168.5	-5,230.5	230.2	-340.4	410.7	0.00	0.00	0.00
3,300.0	9.33	304.07	3,267.2	-5,131.8	239.3	-353.8	426.9	0.00	0.00	0.00
3,400.0	9.33	304.07	3,365.9	-5,033.1	248.3	-367.3	443.1	0.00	0.00	0.00
3,500.0	9.33	304.07	3,464.6	-4,934.4	257.4	-380.7	459.3	0.00	0.00	0.00
3,600.0	9.33	304.07	3,563.2	-4,835.8	266.5	-394.1	475.5	0.00	0.00	0.00
3,700.0	9.33	304.07	3,661.9	-4,737.1	275.6	-407.5	491.7	0.00	0.00	0.00
3,800.0	9.33	304.07	3,760.6	-4,638.4	284.7	-421.0	507.9	0.00	0.00	0.00
3,900.0	9.33	304.07	3,859.3	-4,539.7	293.7	-434.4	524.1	0.00	0.00	0.00
4,000.0	9.33	304.07	3,958.0	-4,441.0	302.8	-447.8	540.3	0.00	0.00	0.00
4,100.0	9.33	304.07	4,056.6	-4,342.4	311.9	-461.3	556.5	0.00	0.00	0.00
4,200.0	9.33	304.07	4,155.3	-4,243.7	321.0	-474.7	572.7	0.00	0.00	0.00
4,300.0	9.33	304.07	4,254.0	-4,145.0	330.1	-488.1	588.9	0.00	0.00	0.00
4,400.0	9.33	304.07	4,352.7	-4,046.3	339.1	-501.6	605.1	0.00	0.00	0.00
<b>Wasatch "G" Sand</b>										
4,416.6	9.33	304.07	4,369.0	-4,030.0	340.7	-503.8	607.8	0.00	0.00	0.00

Database:	RMR1 Database	Local Co-ordinate Reference:	Well Puckett 11A-36D
Company:	Petroleum Development Corp.	TVD Reference:	Puckett 11A-36D KBE @ 8399.0ft (H&P 318)
Project:	Mesa	MD Reference:	Puckett 11A-36D KBE @ 8399.0ft (H&P 318)
Site:	NW Sec 36-T6S-R97W	North Reference:	True
Well:	Puckett 11A-36D	Survey Calculation Method:	Minimum Curvature
Wellbore:	DD		
Design:	Plan #1		

Planned Survey											
Measured Depth (ft)	Inclination (°)	Azimuth (°)	Vertical Depth (ft)	Subsea Depth (ft)	+N/-S (ft)	+E/-W (ft)	Vertical Section (ft)	Dogleg Rate (°/100ft)	Build Rate (°/100ft)	Turn Rate (°/100ft)	
4,500.0	9.33	304.07	4,451.3	-3,947.7	348.2	-515.0	621.4	0.00	0.00	0.00	
4,600.0	9.33	304.07	4,550.0	-3,849.0	357.3	-528.4	637.6	0.00	0.00	0.00	
4,700.0	9.33	304.07	4,648.7	-3,750.3	366.4	-541.8	653.8	0.00	0.00	0.00	
<b>Fort Union</b>											
4,725.6	9.33	304.07	4,674.0	-3,725.0	368.7	-545.3	657.9	0.00	0.00	0.00	
4,800.0	9.33	304.07	4,747.4	-3,651.6	375.5	-555.3	670.0	0.00	0.00	0.00	
4,900.0	9.33	304.07	4,846.0	-3,553.0	384.6	-568.7	686.2	0.00	0.00	0.00	
5,000.0	9.33	304.07	4,944.7	-3,454.3	393.6	-582.1	702.4	0.00	0.00	0.00	
<b>Base Fort Union</b>											
5,055.0	9.33	304.07	4,999.0	-3,400.0	398.6	-589.5	711.3	0.00	0.00	0.00	
5,100.0	9.33	304.07	5,043.4	-3,355.6	402.7	-595.6	718.6	0.00	0.00	0.00	
5,200.0	9.33	304.07	5,142.1	-3,256.9	411.8	-609.0	734.8	0.00	0.00	0.00	
5,300.0	9.33	304.07	5,240.8	-3,158.2	420.9	-622.4	751.0	0.00	0.00	0.00	
5,400.0	9.33	304.07	5,339.4	-3,059.6	430.0	-635.9	767.2	0.00	0.00	0.00	
5,500.0	9.33	304.07	5,438.1	-2,960.9	439.0	-649.3	783.4	0.00	0.00	0.00	
5,600.0	9.33	304.07	5,536.8	-2,862.2	448.1	-662.7	799.6	0.00	0.00	0.00	
5,700.0	9.33	304.07	5,635.5	-2,763.5	457.2	-676.1	815.8	0.00	0.00	0.00	
5,800.0	9.33	304.07	5,734.1	-2,664.9	466.3	-689.6	832.0	0.00	0.00	0.00	
5,900.0	9.33	304.07	5,832.8	-2,566.2	475.4	-703.0	848.2	0.00	0.00	0.00	
<b>Mesaverde/Williams Fk *</b>											
5,967.1	9.33	304.07	5,899.0	-2,500.0	481.5	-712.0	859.1	0.00	0.00	0.00	
<b>Start of Drop</b>											
5,983.4	9.33	304.07	5,915.1	-2,483.9	482.9	-714.2	861.7	0.00	0.00	0.00	
6,000.0	9.16	304.07	5,931.5	-2,467.5	484.4	-716.4	864.4	1.00	-1.00	0.00	
6,100.0	8.16	304.07	6,030.4	-2,368.6	492.9	-728.9	879.4	1.00	-1.00	0.00	
6,200.0	7.16	304.07	6,129.5	-2,269.5	500.3	-739.9	892.8	1.00	-1.00	0.00	
6,300.0	6.16	304.07	6,228.8	-2,170.2	506.8	-749.6	904.4	1.00	-1.00	0.00	
6,400.0	5.16	304.07	6,328.3	-2,070.7	512.4	-757.7	914.2	1.00	-1.00	0.00	
6,500.0	4.16	304.07	6,428.0	-1,971.0	516.9	-764.5	922.4	1.00	-1.00	0.00	
6,600.0	3.16	304.07	6,527.8	-1,871.2	520.5	-769.8	928.8	1.00	-1.00	0.00	
6,700.0	2.16	304.07	6,627.6	-1,771.4	523.1	-773.6	933.4	1.00	-1.00	0.00	
6,800.0	1.16	304.07	6,727.6	-1,671.4	524.7	-776.0	936.3	1.00	-1.00	0.00	
6,900.0	0.16	304.07	6,827.6	-1,571.4	525.4	-777.0	937.5	1.00	-1.00	0.00	
<b>EOD = 0° Inc - Top Gas Cell - Puckett 11A-36D Tgt</b>											
6,916.4	0.00	0.00	6,844.0	-1,555.0	525.4	-777.0	937.5	1.00	-1.00	0.00	
7,000.0	0.21	215.04	6,927.6	-1,471.4	525.3	-777.1	937.5	0.25	0.25	0.00	
7,100.0	0.46	215.04	7,027.6	-1,371.4	524.8	-777.4	937.5	0.25	0.25	0.00	
7,200.0	0.71	215.04	7,127.6	-1,271.4	524.0	-778.0	937.6	0.25	0.25	0.00	
7,274.2	0.89	215.04	7,201.7	-1,197.3	523.1	-778.6	937.6	0.25	0.25	0.00	
7,300.0	0.89	215.04	7,227.6	-1,171.4	522.8	-778.8	937.6	0.00	0.00	0.00	
7,400.0	0.89	215.04	7,327.6	-1,071.4	521.5	-779.7	937.7	0.00	0.00	0.00	
7,500.0	0.89	215.04	7,427.6	-971.4	520.2	-780.6	937.8	0.00	0.00	0.00	
7,600.0	0.89	215.04	7,527.5	-871.5	518.9	-781.5	937.9	0.00	0.00	0.00	
7,700.0	0.89	215.04	7,627.5	-771.5	517.7	-782.4	937.9	0.00	0.00	0.00	
7,800.0	0.89	215.04	7,727.5	-671.5	516.4	-783.3	938.0	0.00	0.00	0.00	
7,900.0	0.89	215.04	7,827.5	-571.5	515.1	-784.2	938.1	0.00	0.00	0.00	
8,000.0	0.89	215.04	7,927.5	-471.5	513.8	-785.1	938.2	0.00	0.00	0.00	
8,100.0	0.89	215.04	8,027.5	-371.5	512.6	-786.0	938.3	0.00	0.00	0.00	
8,200.0	0.89	215.04	8,127.5	-271.5	511.3	-786.9	938.3	0.00	0.00	0.00	
8,300.0	0.89	215.04	8,227.5	-171.5	510.0	-787.8	938.4	0.00	0.00	0.00	
<b>Cameo</b>											
8,316.5	0.89	215.04	8,244.0	-155.0	509.8	-787.9	938.4	0.00	0.00	0.00	
8,400.0	0.89	215.04	8,327.4	-71.6	508.7	-788.7	938.5	0.00	0.00	0.00	

<b>Database:</b>	RMR1 Database	<b>Local Co-ordinate Reference:</b>	Well Puckett 11A-36D
<b>Company:</b>	Petroleum Development Corp.	<b>TVD Reference:</b>	Puckett 11A-36D KBE @ 8399.0ft (H&P 318)
<b>Project:</b>	Mesa	<b>MD Reference:</b>	Puckett 11A-36D KBE @ 8399.0ft (H&P 318)
<b>Site:</b>	NW Sec 36-T6S-R97W	<b>North Reference:</b>	True
<b>Well:</b>	Puckett 11A-36D	<b>Survey Calculation Method:</b>	Minimum Curvature
<b>Wellbore:</b>	DD		
<b>Design:</b>	Plan #1		

Planned Survey											
Measured Depth (ft)	Inclination (°)	Azimuth (°)	Vertical Depth (ft)	Subsea Depth (ft)	+N/-S (ft)	+E/-W (ft)	Vertical Section (ft)	Dogleg Rate (°/100ft)	Build Rate (°/100ft)	Turn Rate (°/100ft)	
8,500.0	0.89	215.04	8,427.4	28.4	507.4	-789.6	938.6	0.00	0.00	0.00	
8,600.0	0.89	215.04	8,527.4	128.4	506.2	-790.5	938.6	0.00	0.00	0.00	
8,700.0	0.89	215.04	8,627.4	228.4	504.9	-791.4	938.7	0.00	0.00	0.00	
8,800.0	0.89	215.04	8,727.4	328.4	503.6	-792.3	938.8	0.00	0.00	0.00	
<b>Rollins</b>											
8,816.6	0.89	215.04	8,744.0	345.0	503.4	-792.4	938.8	0.00	0.00	0.00	
8,900.0	0.89	215.04	8,827.4	428.4	502.3	-793.2	938.9	0.00	0.00	0.00	
9,000.0	0.89	215.04	8,927.4	528.4	501.1	-794.1	938.9	0.00	0.00	0.00	
<b>TD = 9016.6' MD - Puckett 11A-36D BHL</b>											
9,016.6	0.89	215.04	8,944.0	545.0	500.8	-794.2	939.0	0.00	0.00	0.00	

Design Targets										
Target Name	Dip Angle (°)	Dip Dir. (°)	TVD (ft)	+N/-S (ft)	+E/-W (ft)	Northing (ft)	Easting (ft)	Latitude	Longitude	
Puckett 11A-36D Tgt - hit/miss target - Shape - Point	0.00	0.00	6,844.0	525.4	-777.0	1,613,222.52	2,244,439.96	39.486504	-108.177414	
Puckett 11A-36D BHL - plan hits target center - Circle (radius 60.0)	0.00	0.00	8,944.0	500.8	-794.2	1,613,198.48	2,244,422.02	39.486436	-108.177475	

Casing Points					
Measured Depth (ft)	Vertical Depth (ft)	Name	Casing Diameter (")	Hole Diameter (")	
2,725.2	2,700.0	Surface Casing			

Formations						
Measured Depth (ft)	Vertical Depth (ft)	Name	Lithology	Dip (°)	Dip Direction (°)	
2,318.8	2,299.0	Wasatch				
4,416.6	4,369.0	Wasatch "G" Sand				
4,725.6	4,674.0	Fort Union				
5,055.0	4,999.0	Base Fort Union				
5,967.1	5,899.0	Mesaverde/Williams Fk	*			
6,916.4	6,844.0	Top Gas Cell				
8,316.5	8,244.0	Cameo				
8,816.6	8,744.0	Rollins				

Database:	RMR1 Database	Local Co-ordinate Reference:	Well Puckett 11A-36D
Company:	Petroleum Development Corp.	TVD Reference:	Puckett 11A-36D KBE @ 8399.0ft (H&P 318)
Project:	Mesa	MD Reference:	Puckett 11A-36D KBE @ 8399.0ft (H&P 318)
Site:	NW Sec 36-T6S-R97W	North Reference:	True
Well:	Puckett 11A-36D	Survey Calculation Method:	Minimum Curvature
Wellbore:	DD		
Design:	Plan #1		

Plan Annotations

Measured Depth (ft)	Vertical Depth (ft)	Local Coordinates		Comment
		+N/-S (ft)	+E/-W (ft)	
200.0	200.0	0.0	0.0	KOP @ 200'
1,133.0	1,128.9	42.5	-62.8	EOB = 9.33° Inc
5,983.4	5,915.1	482.9	-714.2	Start of Drop
6,916.4	6,844.0	525.4	-777.0	EOD = 0° Inc
9,016.6	8,944.0	500.8	-794.2	TD = 9016.6' MD