

Project: Mesa  
 Site: NW Sec 36-T6S-R97W  
 Well: Puckett 11B-36D  
 Wellbore: DD  
 Design: Plan #1

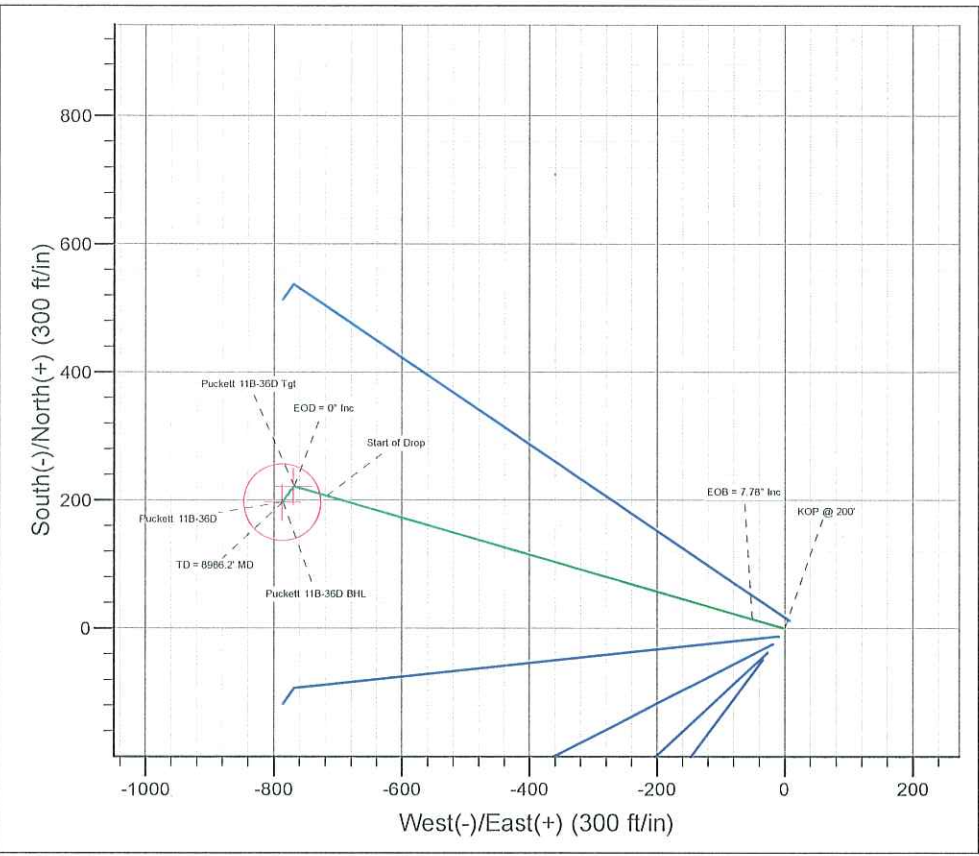
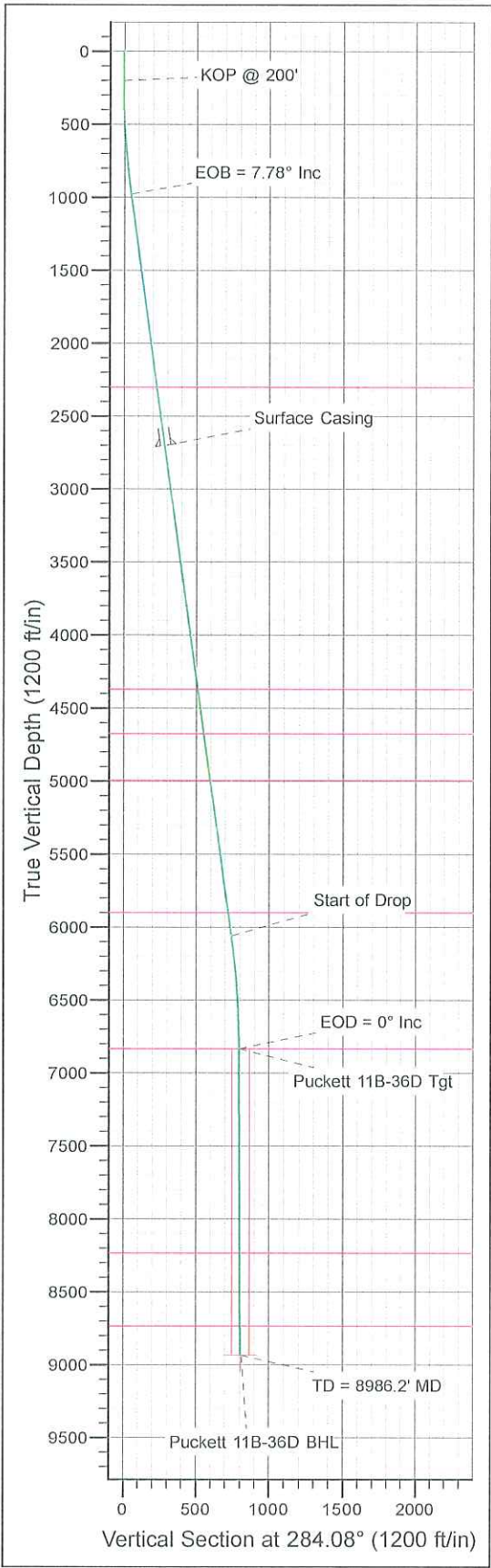


Azimuths to True North  
 Magnetic North: 10.56°

Magnetic Field  
 Strength: 52307.2snT  
 Dip Angle: 65.72°  
 Date: 2010/05/27  
 Model: IGRF2010-14

WELL DETAILS: Puckett 11B-36D

+N/-S	+E/-W	Northing	Ground Level:	8375.0	Longitude	Slot
0.0	0.0	1612662.71	Easting	2245192.05	Latitude	
					39.485028	
					-108.174692	



ANNOTATIONS

TVD	MD	Annotation
200.0	200.0	KOP @ 200'
975.3	977.7	EOB = 7.78° Inc
6058.7	6108.3	Start of Drop
6834.0	6886.0	EOD = 0° Inc
8934.0	8986.2	TD = 8986.2' MD

FORMATION TOP DETAILS

TVDPath	MDPath	Formation
2299.0	2313.7	Wasatch
4369.0	4402.9	Wasatch "G" Sand
4674.0	4710.7	Fort Union
4994.0	5033.7	Base Fort Union
5899.0	5947.1	Mesaverde/Williams Fk
6834.0	6886.0	Top Gas Cell
8234.0	8286.1	Cameo
8734.0	8786.2	Rollins

--- ON DETAILS

Sec	MD	Inc	Azi	TVD	+N/-S	+E/-W	DLeg	TFace	VSec	Target
1	0.0	0.00	0.00	0.0	0.0	0.0	0.00	0.00	0.0	
2	200.0	0.00	0.00	200.0	0.0	0.0	0.00	0.00	0.0	
3	977.7	7.78	286.10	975.3	14.6	-50.6	1.00	286.10	52.7	
4	6108.3	7.78	286.10	6058.7	207.1	-717.7	0.00	0.00	746.5	
5	6886.0	0.00	0.00	6834.0	221.7	-768.3	1.00	180.00	799.2	Puckett 11B-36D Tgt
6	7244.2	0.90	214.90	7192.2	219.4	-769.9	0.25	214.90	800.1	
7	8986.2	0.90	214.90	8934.0	197.1	-785.5	0.00	0.00	809.8	Puckett 11B-36D BHL

WELLBORE TARGET DETAILS (LAT/LONG)

Name	TVD	+N/-S	+E/-W	Latitude	Longitude	Shape
Puckett 11B-36D Tgt	6834.0	221.7	-768.3	39.485637	-108.177414	Point
Puckett 11B-36D BHL	8934.0	197.1	-785.5	39.485569	-108.177475	Circle (Radius: 60.0)

CASING DETAILS

TVD	MD	Name	Size
2700.0	2718.4	Surface Casing	



Plan: Plan #1 (Puckett 11B-36D/DD)

Created By: Jon Schweigert Date: 15:53, May 27 2010  
 Checked: \_\_\_\_\_ Date: \_\_\_\_\_  
 Reviewed: \_\_\_\_\_ Date: \_\_\_\_\_  
 Approved: \_\_\_\_\_ Date: \_\_\_\_\_

Database:	RMR1 Database	Local Co-ordinate Reference:	Well Puckett 11B-36D
Company:	Petroleum Development Corp.	TVD Reference:	Puckett 11B-36D KBE @ 8399.0ft (H&P 318)
Project:	Mesa	MD Reference:	Puckett 11B-36D KBE @ 8399.0ft (H&P 318)
Site:	NW Sec 36-T6S-R97W	North Reference:	True
Well:	Puckett 11B-36D	Survey Calculation Method:	Minimum Curvature
Wellbore:	DD		
Design:	Plan #1		

Project	Mesa		
Map System:	US State Plane 1983	System Datum:	Mean Sea Level
Geo Datum:	North American Datum 1983		
Map Zone:	Colorado Central Zone		

Site	NW Sec 36-T6S-R97W				
Site Position:		Northing:	1,612,674.48 ft	Latitude:	39.485061
From:	Lat/Long	Easting:	2,245,201.15 ft	Longitude:	-108.174661
Position Uncertainty:	0.0 ft	Slot Radius:		Grid Convergence:	-1.69 °

Well	Puckett 11B-36D					
Well Position	+N/-S	-12.0 ft	Northing:	1,612,662.71 ft	Latitude:	39.485028
	+E/-W	-8.7 ft	Easting:	2,245,192.05 ft	Longitude:	-108.174692
Position Uncertainty		0.0 ft	Wellhead Elevation:		Ground Level:	8,375.0 ft

Wellbore	DD				
Magnetics	Model Name	Sample Date	Declination (°)	Dip Angle (°)	Field Strength (nT)
	IGRF2010-14	2010/05/27	10.56	65.72	52,307

Design	Plan #1			
Audit Notes:				
Version:	Phase:	PROTOTYPE	Tie On Depth:	0.0
Vertical Section:	Depth From (TVD) (ft)	+N/-S (ft)	+E/-W (ft)	Direction (°)
	0.0	0.0	0.0	284.08

Plan Sections										
Measured Depth (ft)	Inclination (°)	Azimuth (°)	Vertical Depth (ft)	+N/-S (ft)	+E/-W (ft)	Dogleg Rate (°/100ft)	Build Rate (°/100ft)	Turn Rate (°/100ft)	TFO (°)	Target
0.0	0.00	0.00	0.0	0.0	0.0	0.00	0.00	0.00	0.00	
200.0	0.00	0.00	200.0	0.0	0.0	0.00	0.00	0.00	0.00	
977.7	7.78	286.10	975.3	14.6	-50.6	1.00	1.00	0.00	286.10	
6,108.3	7.78	286.10	6,058.7	207.1	-717.7	0.00	0.00	0.00	0.00	
6,886.0	0.00	0.00	6,834.0	221.7	-768.3	1.00	-1.00	0.00	180.00	Puckett 11B-36D Tgt
7,244.2	0.90	214.90	7,192.2	219.4	-769.9	0.25	0.25	-40.50	214.90	
8,986.2	0.90	214.90	8,934.0	197.1	-785.5	0.00	0.00	0.00	0.00	Puckett 11B-36D BHL

Database:	RMR1 Database	Local Co-ordinate Reference:	Well Puckett 11B-36D
Company:	Petroleum Development Corp.	TVD Reference:	Puckett 11B-36D KBE @ 8399.0ft (H&P 318)
Project:	Mesa	MD Reference:	Puckett 11B-36D KBE @ 8399.0ft (H&P 318)
Site:	NW Sec 36-T6S-R97W	North Reference:	True
Well:	Puckett 11B-36D	Survey Calculation Method:	Minimum Curvature
Wellbore:	DD		
Design:	Plan #1		

Planned Survey											
Measured			Vertical	Subsea			Vertical	Dogleg	Build	Turn	
Depth	Inclination	Azimuth	Depth	Depth	+N/-S	+E/-W	Section	Rate	Rate	Rate	
(ft)	(°)	(°)	(ft)	(ft)	(ft)	(ft)	(ft)	(°/100ft)	(°/100ft)	(°/100ft)	(°/100ft)
0.0	0.00	0.00	0.0	-8,399.0	0.0	0.0	0.0	0.00	0.00	0.00	0.00
100.0	0.00	0.00	100.0	-8,299.0	0.0	0.0	0.0	0.00	0.00	0.00	0.00
<b>KOP @ 200'</b>											
200.0	0.00	0.00	200.0	-8,199.0	0.0	0.0	0.0	0.00	0.00	0.00	0.00
300.0	1.00	286.10	300.0	-8,099.0	0.2	-0.8	0.9	1.00	1.00	0.00	0.00
400.0	2.00	286.10	400.0	-7,999.0	1.0	-3.4	3.5	1.00	1.00	0.00	0.00
500.0	3.00	286.10	499.9	-7,899.1	2.2	-7.5	7.8	1.00	1.00	0.00	0.00
600.0	4.00	286.10	599.7	-7,799.3	3.9	-13.4	13.9	1.00	1.00	0.00	0.00
700.0	5.00	286.10	699.4	-7,699.6	6.0	-20.9	21.8	1.00	1.00	0.00	0.00
800.0	6.00	286.10	798.9	-7,600.1	8.7	-30.2	31.4	1.00	1.00	0.00	0.00
900.0	7.00	286.10	898.3	-7,500.7	11.8	-41.0	42.7	1.00	1.00	0.00	0.00
<b>EOB = 7.78° Inc</b>											
977.7	7.78	286.10	975.3	-7,423.7	14.6	-50.6	52.7	1.00	1.00	0.00	0.00
1,000.0	7.78	286.10	997.4	-7,401.6	15.4	-53.5	55.7	0.00	0.00	0.00	0.00
1,100.0	7.78	286.10	1,096.5	-7,302.5	19.2	-66.5	69.2	0.00	0.00	0.00	0.00
1,200.0	7.78	286.10	1,195.6	-7,203.4	23.0	-79.5	82.7	0.00	0.00	0.00	0.00
1,300.0	7.78	286.10	1,294.6	-7,104.4	26.7	-92.5	96.3	0.00	0.00	0.00	0.00
1,400.0	7.78	286.10	1,393.7	-7,005.3	30.5	-105.5	109.8	0.00	0.00	0.00	0.00
1,500.0	7.78	286.10	1,492.8	-6,906.2	34.2	-118.5	123.3	0.00	0.00	0.00	0.00
1,600.0	7.78	286.10	1,591.9	-6,807.1	38.0	-131.5	136.8	0.00	0.00	0.00	0.00
1,700.0	7.78	286.10	1,691.0	-6,708.0	41.7	-144.5	150.3	0.00	0.00	0.00	0.00
1,800.0	7.78	286.10	1,790.1	-6,608.9	45.5	-157.5	163.9	0.00	0.00	0.00	0.00
1,900.0	7.78	286.10	1,889.1	-6,509.9	49.2	-170.5	177.4	0.00	0.00	0.00	0.00
2,000.0	7.78	286.10	1,988.2	-6,410.8	53.0	-183.5	190.9	0.00	0.00	0.00	0.00
2,100.0	7.78	286.10	2,087.3	-6,311.7	56.7	-196.5	204.4	0.00	0.00	0.00	0.00
2,200.0	7.78	286.10	2,186.4	-6,212.6	60.5	-209.5	218.0	0.00	0.00	0.00	0.00
2,300.0	7.78	286.10	2,285.5	-6,113.5	64.2	-222.5	231.5	0.00	0.00	0.00	0.00
<b>Wasatch</b>											
2,313.7	7.78	286.10	2,299.0	-6,100.0	64.7	-224.3	233.3	0.00	0.00	0.00	0.00
2,400.0	7.78	286.10	2,384.5	-6,014.5	68.0	-235.5	245.0	0.00	0.00	0.00	0.00
2,500.0	7.78	286.10	2,483.6	-5,915.4	71.7	-248.6	258.5	0.00	0.00	0.00	0.00
2,600.0	7.78	286.10	2,582.7	-5,816.3	75.5	-261.6	272.1	0.00	0.00	0.00	0.00
2,700.0	7.78	286.10	2,681.8	-5,717.2	79.2	-274.6	285.6	0.00	0.00	0.00	0.00
<b>Surface Casing</b>											
2,718.4	7.78	286.10	2,700.0	-5,699.0	79.9	-276.9	288.1	0.00	0.00	0.00	0.00
2,800.0	7.78	286.10	2,780.9	-5,618.1	83.0	-287.6	299.1	0.00	0.00	0.00	0.00
2,900.0	7.78	286.10	2,879.9	-5,519.1	86.7	-300.6	312.6	0.00	0.00	0.00	0.00
3,000.0	7.78	286.10	2,979.0	-5,420.0	90.5	-313.6	326.1	0.00	0.00	0.00	0.00
3,100.0	7.78	286.10	3,078.1	-5,320.9	94.2	-326.6	339.7	0.00	0.00	0.00	0.00
3,200.0	7.78	286.10	3,177.2	-5,221.8	98.0	-339.6	353.2	0.00	0.00	0.00	0.00
3,300.0	7.78	286.10	3,276.3	-5,122.7	101.7	-352.6	366.7	0.00	0.00	0.00	0.00
3,400.0	7.78	286.10	3,375.3	-5,023.7	105.5	-365.6	380.2	0.00	0.00	0.00	0.00
3,500.0	7.78	286.10	3,474.4	-4,924.6	109.2	-378.6	393.8	0.00	0.00	0.00	0.00
3,600.0	7.78	286.10	3,573.5	-4,825.5	113.0	-391.6	407.3	0.00	0.00	0.00	0.00
3,700.0	7.78	286.10	3,672.6	-4,726.4	116.7	-404.6	420.8	0.00	0.00	0.00	0.00
3,800.0	7.78	286.10	3,771.7	-4,627.3	120.5	-417.6	434.3	0.00	0.00	0.00	0.00
3,900.0	7.78	286.10	3,870.7	-4,528.3	124.2	-430.6	447.9	0.00	0.00	0.00	0.00
4,000.0	7.78	286.10	3,969.8	-4,429.2	128.0	-443.6	461.4	0.00	0.00	0.00	0.00
4,100.0	7.78	286.10	4,068.9	-4,330.1	131.7	-456.6	474.9	0.00	0.00	0.00	0.00
4,200.0	7.78	286.10	4,168.0	-4,231.0	135.5	-469.6	488.4	0.00	0.00	0.00	0.00
4,300.0	7.78	286.10	4,267.1	-4,131.9	139.3	-482.6	502.0	0.00	0.00	0.00	0.00
4,400.0	7.78	286.10	4,366.1	-4,032.9	143.0	-495.6	515.5	0.00	0.00	0.00	0.00
<b>Wasatch "G" Sand</b>											
4,402.9	7.78	286.10	4,369.0	-4,030.0	143.1	-495.9	515.9	0.00	0.00	0.00	0.00

Database:	RMR1 Database	Local Co-ordinate Reference:	Well Puckett 11B-36D
Company:	Petroleum Development Corp.	TVD Reference:	Puckett 11B-36D KBE @ 8399.0ft (H&P 318)
Project:	Mesa	MD Reference:	Puckett 11B-36D KBE @ 8399.0ft (H&P 318)
Site:	NW Sec 36-T6S-R97W	North Reference:	True
Well:	Puckett 11B-36D	Survey Calculation Method:	Minimum Curvature
Wellbore:	DD		
Design:	Plan #1		

**Planned Survey**

Measured Depth (ft)	Inclination (°)	Azimuth (°)	Vertical Depth (ft)	Subsea Depth (ft)	+N/-S (ft)	+E/-W (ft)	Vertical Section (ft)	Dogleg Rate (°/100ft)	Build Rate (°/100ft)	Turn Rate (°/100ft)
4,500.0	7.78	286.10	4,465.2	-3,933.8	146.8	-508.6	529.0	0.00	0.00	0.00
4,600.0	7.78	286.10	4,564.3	-3,834.7	150.5	-521.6	542.5	0.00	0.00	0.00
4,700.0	7.78	286.10	4,663.4	-3,735.6	154.3	-534.6	556.0	0.00	0.00	0.00
<b>Fort Union</b>										
4,710.7	7.78	286.10	4,674.0	-3,725.0	154.7	-536.0	557.5	0.00	0.00	0.00
4,800.0	7.78	286.10	4,762.5	-3,636.5	158.0	-547.6	569.6	0.00	0.00	0.00
4,900.0	7.78	286.10	4,861.5	-3,537.5	161.8	-560.6	583.1	0.00	0.00	0.00
5,000.0	7.78	286.10	4,960.6	-3,438.4	165.5	-573.6	596.6	0.00	0.00	0.00
<b>Base Fort Union</b>										
5,033.7	7.78	286.10	4,994.0	-3,405.0	166.8	-578.0	601.2	0.00	0.00	0.00
5,100.0	7.78	286.10	5,059.7	-3,339.3	169.3	-586.6	610.1	0.00	0.00	0.00
5,200.0	7.78	286.10	5,158.8	-3,240.2	173.0	-599.6	623.7	0.00	0.00	0.00
5,300.0	7.78	286.10	5,257.9	-3,141.1	176.8	-612.6	637.2	0.00	0.00	0.00
5,400.0	7.78	286.10	5,356.9	-3,042.1	180.5	-625.6	650.7	0.00	0.00	0.00
5,500.0	7.78	286.10	5,456.0	-2,943.0	184.3	-638.6	664.2	0.00	0.00	0.00
5,600.0	7.78	286.10	5,555.1	-2,843.9	188.0	-651.6	677.8	0.00	0.00	0.00
5,700.0	7.78	286.10	5,654.2	-2,744.8	191.8	-664.6	691.3	0.00	0.00	0.00
5,800.0	7.78	286.10	5,753.3	-2,645.7	195.5	-677.6	704.8	0.00	0.00	0.00
5,900.0	7.78	286.10	5,852.3	-2,546.7	199.3	-690.6	718.3	0.00	0.00	0.00
<b>Mesaverde/Williams Fk</b> *										
5,947.1	7.78	286.10	5,899.0	-2,500.0	201.0	-696.7	724.7	0.00	0.00	0.00
6,000.0	7.78	286.10	5,951.4	-2,447.6	203.0	-703.6	731.8	0.00	0.00	0.00
6,100.0	7.78	286.10	6,050.5	-2,348.5	206.8	-716.6	745.4	0.00	0.00	0.00
<b>Start of Drop</b>										
6,108.3	7.78	286.10	6,058.7	-2,340.3	207.1	-717.7	746.5	0.00	0.00	0.00
6,200.0	6.86	286.10	6,149.7	-2,249.3	210.3	-728.9	758.2	1.00	-1.00	0.00
6,300.0	5.86	286.10	6,249.1	-2,149.9	213.4	-739.5	769.2	1.00	-1.00	0.00
6,400.0	4.86	286.10	6,348.6	-2,050.4	216.0	-748.5	778.6	1.00	-1.00	0.00
6,500.0	3.86	286.10	6,448.3	-1,950.7	218.1	-755.8	786.2	1.00	-1.00	0.00
6,600.0	2.86	286.10	6,548.2	-1,850.8	219.7	-761.4	792.0	1.00	-1.00	0.00
6,700.0	1.86	286.10	6,648.1	-1,750.9	220.9	-765.4	796.1	1.00	-1.00	0.00
6,800.0	0.86	286.10	6,748.0	-1,651.0	221.5	-767.7	798.5	1.00	-1.00	0.00
<b>EOD = 0° Inc - Top Gas Cell - Puckett 11B-36D Tgt</b>										
6,886.0	0.00	0.00	6,834.0	-1,565.0	221.7	-768.3	799.2	1.00	-1.00	0.00
6,900.0	0.04	214.90	6,848.0	-1,551.0	221.7	-768.3	799.2	0.25	0.25	0.00
7,000.0	0.29	214.90	6,948.0	-1,451.0	221.5	-768.5	799.3	0.25	0.25	0.00
7,100.0	0.54	214.90	7,048.0	-1,351.0	220.9	-768.9	799.5	0.25	0.25	0.00
7,200.0	0.79	214.90	7,148.0	-1,251.0	219.9	-769.5	799.9	0.25	0.25	0.00
7,244.2	0.90	214.90	7,192.2	-1,206.8	219.4	-769.9	800.1	0.25	0.25	0.00
7,300.0	0.90	214.90	7,248.0	-1,151.0	218.7	-770.4	800.5	0.00	0.00	0.00
7,400.0	0.90	214.90	7,348.0	-1,051.0	217.4	-771.3	801.0	0.00	0.00	0.00
7,500.0	0.90	214.90	7,448.0	-951.0	216.1	-772.2	801.6	0.00	0.00	0.00
7,600.0	0.90	214.90	7,548.0	-851.0	214.8	-773.1	802.1	0.00	0.00	0.00
7,700.0	0.90	214.90	7,648.0	-751.0	213.6	-774.0	802.7	0.00	0.00	0.00
7,800.0	0.90	214.90	7,748.0	-651.0	212.3	-774.9	803.2	0.00	0.00	0.00
7,900.0	0.90	214.90	7,847.9	-551.1	211.0	-775.8	803.8	0.00	0.00	0.00
8,000.0	0.90	214.90	7,947.9	-451.1	209.7	-776.7	804.3	0.00	0.00	0.00
8,100.0	0.90	214.90	8,047.9	-351.1	208.4	-777.6	804.9	0.00	0.00	0.00
8,200.0	0.90	214.90	8,147.9	-251.1	207.2	-778.5	805.5	0.00	0.00	0.00
<b>Cameo</b>										
8,286.1	0.90	214.90	8,234.0	-165.0	206.0	-779.2	805.9	0.00	0.00	0.00
8,300.0	0.90	214.90	8,247.9	-151.1	205.9	-779.3	806.0	0.00	0.00	0.00
8,400.0	0.90	214.90	8,347.9	-51.1	204.6	-780.2	806.6	0.00	0.00	0.00



Database:	RMR1 Database	Local Co-ordinate Reference:	Well Puckett 11B-36D
Company:	Petroleum Development Corp.	TVD Reference:	Puckett 11B-36D KBE @ 8399.0ft (H&P 318)
Project:	Mesa	MD Reference:	Puckett 11B-36D KBE @ 8399.0ft (H&P 318)
Site:	NW Sec 36-T6S-R97W	North Reference:	True
Well:	Puckett 11B-36D	Survey Calculation Method:	Minimum Curvature
Wellbore:	DD		
Design:	Plan #1		

### Planned Survey

Measured Depth (ft)	Inclination (°)	Azimuth (°)	Vertical Depth (ft)	Subsea Depth (ft)	+N/-S (ft)	+E/-W (ft)	Vertical Section (ft)	Dogleg Rate (°/100ft)	Build Rate (°/100ft)	Turn Rate (°/100ft)
8,500.0	0.90	214.90	8,447.9	48.9	203.3	-781.1	807.1	0.00	0.00	0.00
8,600.0	0.90	214.90	8,547.9	148.9	202.0	-782.0	807.7	0.00	0.00	0.00
8,700.0	0.90	214.90	8,647.8	248.8	200.7	-782.9	808.2	0.00	0.00	0.00
<b>Rollins</b>										
8,786.2	0.90	214.90	8,734.0	335.0	199.6	-783.7	808.7	0.00	0.00	0.00
8,800.0	0.90	214.90	8,747.8	348.8	199.5	-783.8	808.8	0.00	0.00	0.00
8,900.0	0.90	214.90	8,847.8	448.8	198.2	-784.7	809.3	0.00	0.00	0.00
<b>Puckett 11B-36D BHL</b>										
8,986.2	0.90	214.90	8,934.0	535.0	197.1	-785.5	809.8	0.00	0.00	0.00

### Design Targets

Target Name	Dip Angle (°)	Dip Dir. (°)	TVD (ft)	+N/-S (ft)	+E/-W (ft)	Northing (ft)	Easting (ft)	Latitude	Longitude
Puckett 11B-36D Tgt - hit/miss target - Shape - Point	0.00	0.00	6,834.0	221.7	-768.3	1,612,906.93	2,244,430.62	39.485637	-108.177414
Puckett 11B-36D BHL - plan hits target center - Circle (radius 60.0)	0.00	0.00	8,934.0	197.1	-785.5	1,612,882.82	2,244,412.72	39.485569	-108.177475

### Casing Points

Measured Depth (ft)	Vertical Depth (ft)	Name	Casing Diameter (")	Hole Diameter (")
2,718.4	2,700.0	Surface Casing		

### Formations

Measured Depth (ft)	Vertical Depth (ft)	Name	Lithology	Dip (°)	Dip Direction (°)
2,313.7	2,299.0	Wasatch			
4,402.9	4,369.0	Wasatch "G" Sand			
4,710.7	4,674.0	Fort Union			
5,033.7	4,994.0	Base Fort Union			
5,947.1	5,899.0	Mesaverde/Williams Fk *			
6,886.0	6,834.0	Top Gas Cell			
8,286.1	8,234.0	Cameo			
8,786.2	8,734.0	Rollins			



Database:	RMR1 Database	Local Co-ordinate Reference:	Well Puckett 11B-36D
Company:	Petroleum Development Corp.	TVD Reference:	Puckett 11B-36D KBE @ 8399.0ft (H&P 318)
Project:	Mesa	MD Reference:	Puckett 11B-36D KBE @ 8399.0ft (H&P 318)
Site:	NW Sec 36-T6S-R97W	North Reference:	True
Well:	Puckett 11B-36D	Survey Calculation Method:	Minimum Curvature
Wellbore:	DD		
Design:	Plan #1		

Plan Annotations

Measured Depth (ft)	Vertical Depth (ft)	Local Coordinates		Comment
		+N/-S (ft)	+E/-W (ft)	
200.0	200.0	0.0	0.0	KOP @ 200'
977.7	975.3	14.6	-50.6	EOB = 7.78° Inc
6,108.3	6,058.7	207.1	-717.7	Start of Drop
6,886.0	6,834.0	221.7	-768.3	EOD = 0° Inc
8,986.2	8,934.0	197.1	-785.5	TD = 8986.2' MD