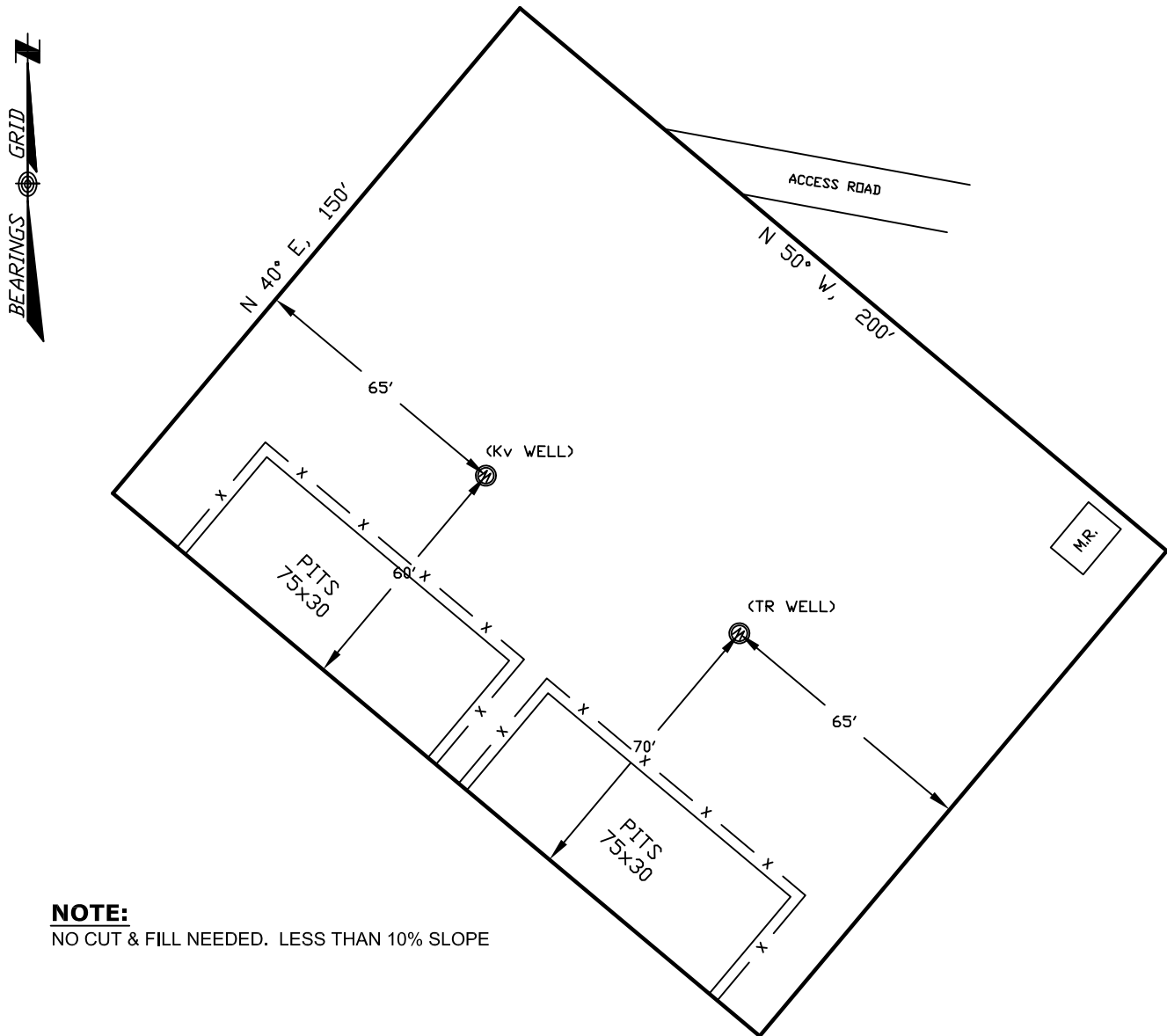


# WELLSITE/PRODUCTION EQUIPMENT LAYOUT

OPERATOR: Pioneer Natural Resources

WELL NAME: Timbale 32-12

SWNE of SECTION 12 TOWNSHIP 33 S, RANGE 68 W OF THE 6TH P.M., IN LAS ANIMAS COUNTY



## NOTE:





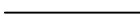
NO CUT & FILL NEEDED. LESS THAN 10% SLOPE

## NOTE:

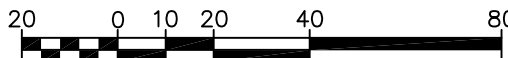
MUD AND BLOW PITS WILL BE CONVERTED TO LINED EVAPORATION PITS FOR PRODUCTION.

WELLHEADS ARE TYPICALLY PCP DRIVE HEADS

## LEGEND:

-  = WELLHEAD
-  = EXISTING WELLPAD
-  = FENCE (4 STRAND)
-  = 4" GAS GATHERING LINE
-  = 2" WATER LINE
- M.R. = COMBO METER RUN AND WATER/GAS SEPARATOR
- G.D.S. = GAS DRIVE SYSTEM

## GRAPHIC SCALE



( IN FEET )

1 inch = 40 ft.

May 10, 2010

Date Platted

SHIELDS SURVEY L<sup>td</sup>. C<sup>o</sup>.  
Raton, New Mexico 87740  
(575)445-1232