

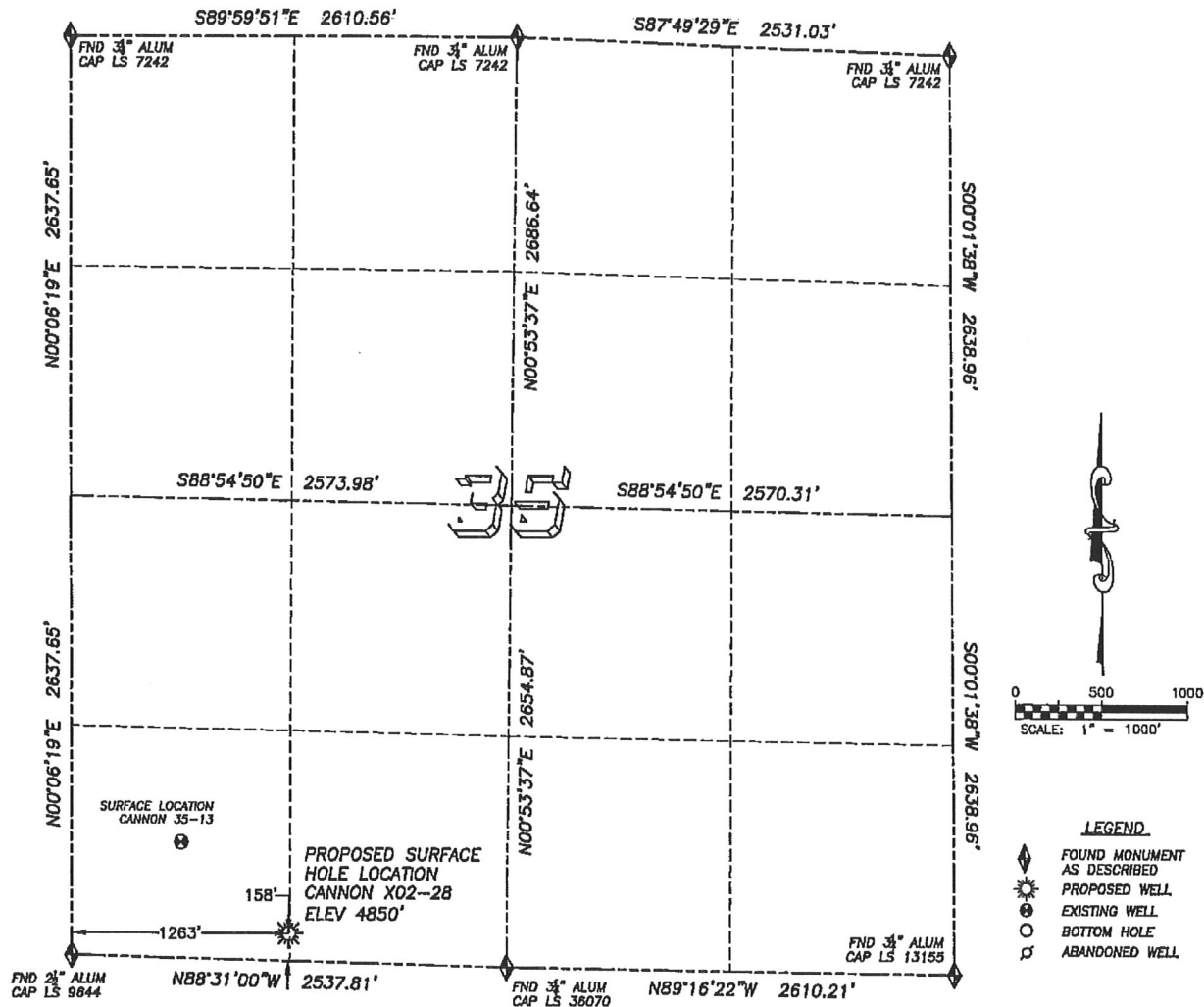
DALEY LAND SURVEYING, INC.

PARKER, CO. 80134

303 953 9841

# WELL LOCATION CERTIFICATE CANNON X02-29

SECTION 35, TOWNSHIP 3 NORTH, RANGE 65 WEST OF THE 6TH PRINCIPAL MERIDIAN

**NAD 83 LATITUDE AND LONGITUDE****CANNON X02-29 SURFACE HOLE:**

LATITUDE: N40.17491°  
 LONGITUDE: W104.63568°  
 ELEVATION: 4850'  
 PDOP 1.3  
 158' FSL, 1263' FWL

**NEAREST EXISTING WELL:**

CANNON H35-13 SURFACE HOLE  
 LATITUDE: N40.17635°  
 LONGITUDE: W104.63791°  
 ELEVATION: 4840'  
 815' NORTHWEST

QUARTER/QUARTER: SW4/SW4

NEAREST APPARENT PROPERTY LINE:  
 158'± SOUTH

IN ACCORDANCE WITH A REQUEST FROM BILL BETSON OF NOBLE ENERGY INC., DALEY LAND SURVEYING, INC. HAS DETERMINED THE SURFACE LOCATION OF THE CANNON X02-29 WELL TO BE 158' FSL, 1263' FWL, AS MEASURED AT NINETY (90) DEGREES FROM THE SECTION LINES OF SECTION 35, TOWNSHIP 3 NORTH, RANGE 65 WEST OF THE 6TH PRINCIPAL MERIDIAN, WELD COUNTY COLORADO.

I HEREBY CERTIFY THAT THIS WELL LOCATION CERTIFICATE WAS PREPARED BY ME OR UNDER MY DIRECT SUPERVISION, THAT THE WORK WAS COMPLETED ON 2/22/2010 FOR AND ON BEHALF OF NOBLE ENERGY, INC., AND THAT THIS MAP DOES NOT REPRESENT A BOUNDARY SURVEY, IT IS NOT A LAND SURVEY PLAT OR AN IMPROVEMENT SURVEY PLAT AND IT IS NOT TO BE RELIED UPON FOR THE ESTABLISHMENT OF FENCE, BUILDING OR OTHER FUTURE IMPROVEMENT LINES.

**NOTES:**

- 1) BASIS OF BEARING FOR THIS MAP IS ASSUMED AND BASED UPON GPS OBSERVATIONS MADE BETWEEN MONUMENTS LOCATED AT THE SOUTHWEST AND SOUTH QUARTER CORNERS OF SECTION 35, T.3N., R.65W., AND ALL BEARINGS SHOWN HEREON ARE RELATIVE THERETO.
- 2) HORIZONTAL DATUM IS NAD83.
- 3) VERTICAL DATUM IS NAVD83. ELEVATIONS ARE DERIVED FROM GPS-RTK OBSERVATIONS PROCESSED THROUGH OPUS, UTILIZING THE GEOID03 MODEL.
- 4) SEE VISIBLE IMPROVEMENTS EXHIBIT FOR VISIBLE IMPROVEMENTS WITHIN 600' OF PROPOSED SURFACE HOLE LOCATION
- 5) SURFACE USE: OPEN RANGELAND

NOTICE: According to Colorado law you MUST commence any legal action based upon any defect in this W.L.C. within three years after you first discover such defect. In no event may any action based upon any such defect in this W.L.C. be commenced more than ten years from the date of the certification shown herein.



FOR AND ON BEHALF OF  
 DALEY LAND SURVEYING INC.,  
 Robert Daley, PLS 35597

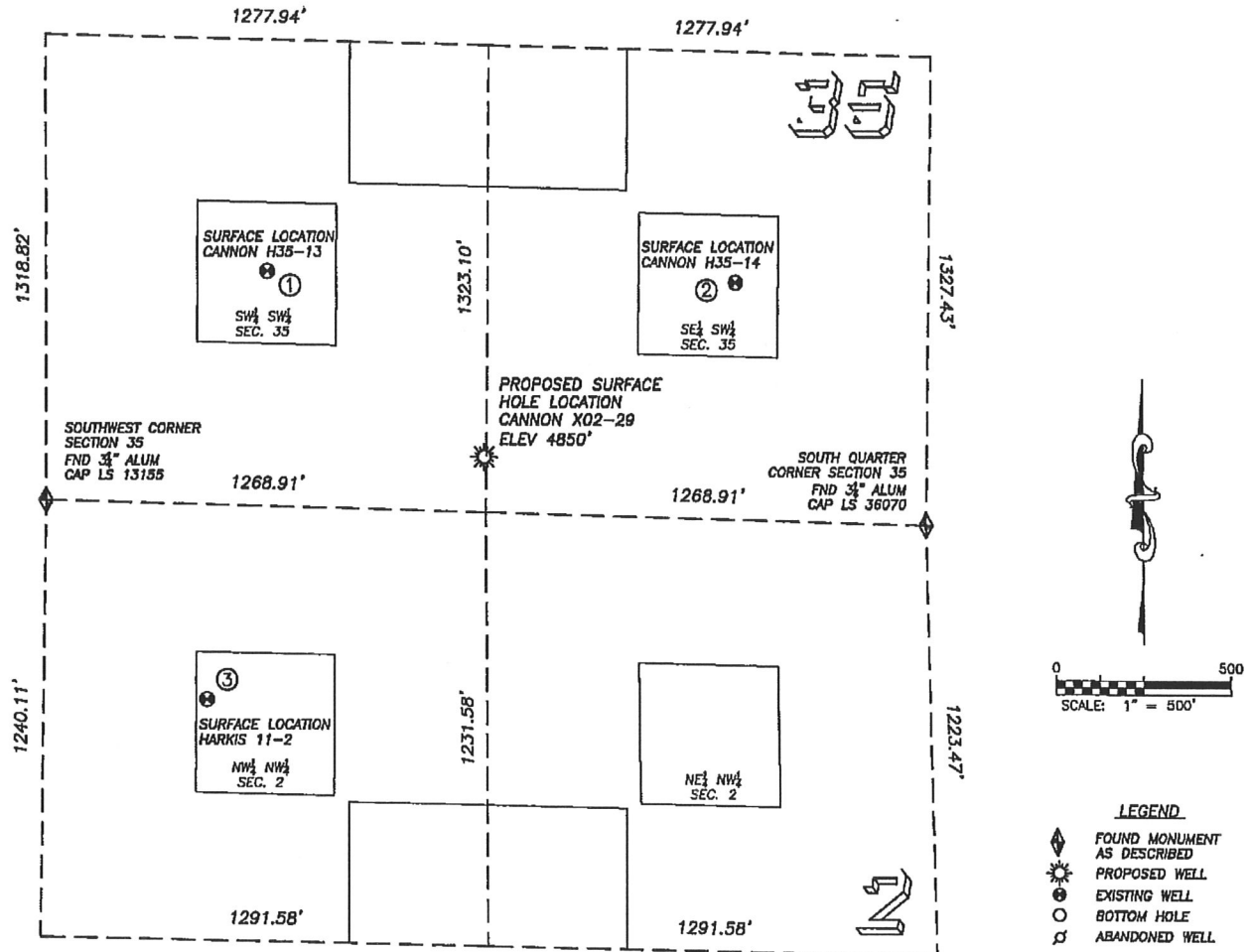
DALEY LAND SURVEYING, INC.

PARKER, CO. 80134

303 953 9841

# SITE SKETCH CANNON X02-29

SECTION 35, TOWNSHIP 3 NORTH, RANGE 65 WEST OF THE 6TH PRINCIPAL MERIDIAN



①

CANNON H35-13  
SW/SW SEC. 35  
666' FSL, 638' FWL  
815' NW OF PROPOSED  
SURFACE HOLE LOCATION  
LAT. N40.17635°  
LONG. W104.63791°  
EL: 4840'  
PDOP 3.5

②

CANNON H35-14  
SE/SW SEC. 35  
672' FSL, 1987' FWL  
879' NE OF PROPOSED  
SURFACE HOLE LOCATION  
LAT. N40.17627°  
LONG. W104.63308°  
EL: 4854'  
PDOP 3.6

③

HARKIS 11-2  
NW/NW SEC. 2  
554' FNL, 470' FWL  
1059' SW OF PROPOSED  
SURFACE HOLE LOCATION  
LAT. N40.17302°  
LONG. W104.63855°  
EL: 4845'  
PDOP 2.7

## NOTES:

- 1) THIS DOES NOT REPRESENT A BOUNDARY SURVEY
- 2) THE LATITUDES AND LONGITUDES SHOWN ARE REFERENCED TO NAD83
- 3) DATUM FOR ELEVATION IS NAVD88. ELEVATIONS ARE DERIVED FROM GPS-RTK OBSERVATIONS PROCESSED THROUGH OPUS, UTILIZING THE GEOID03 MODEL.