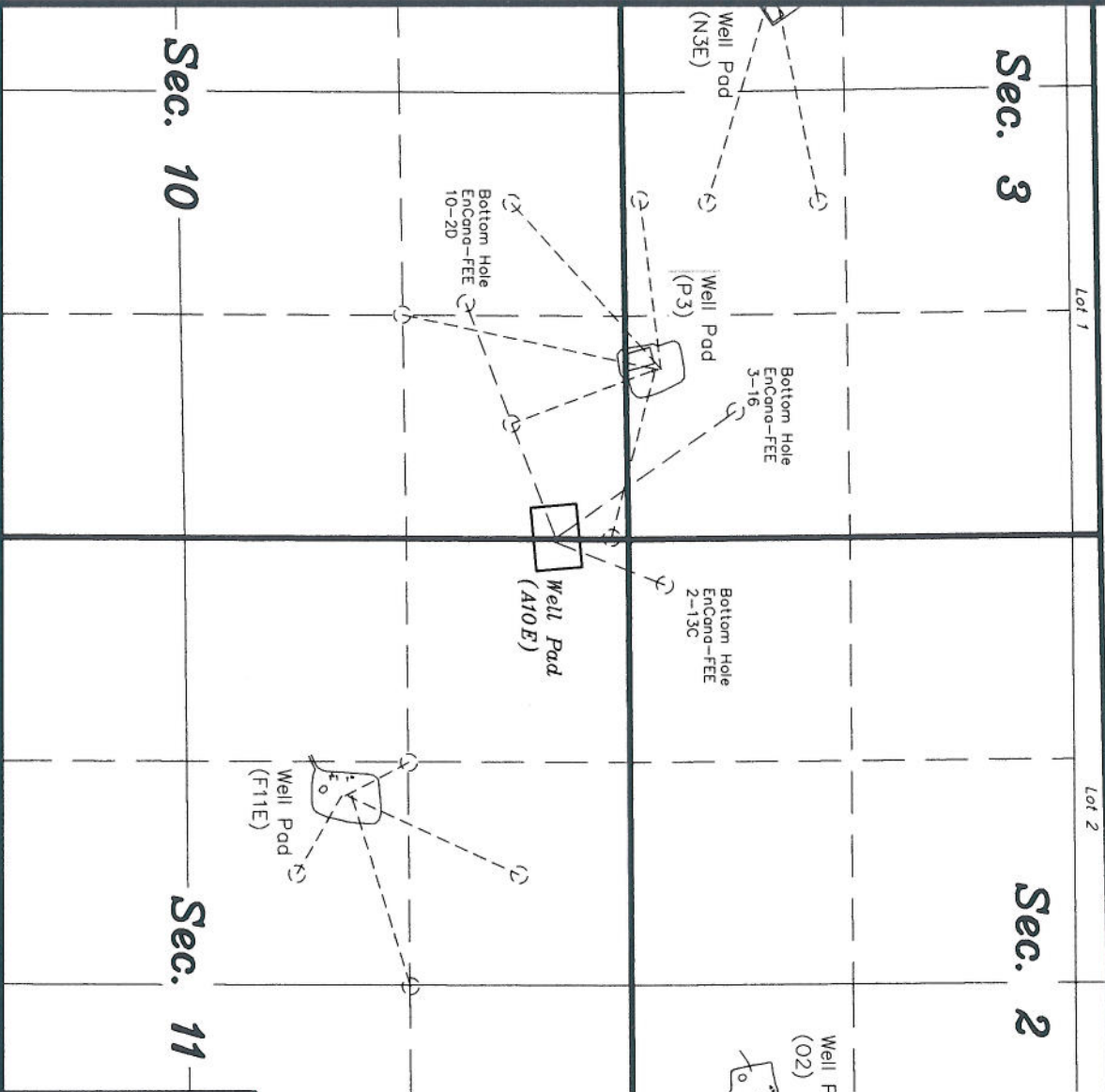


T7S, R92W, 6th P.M.

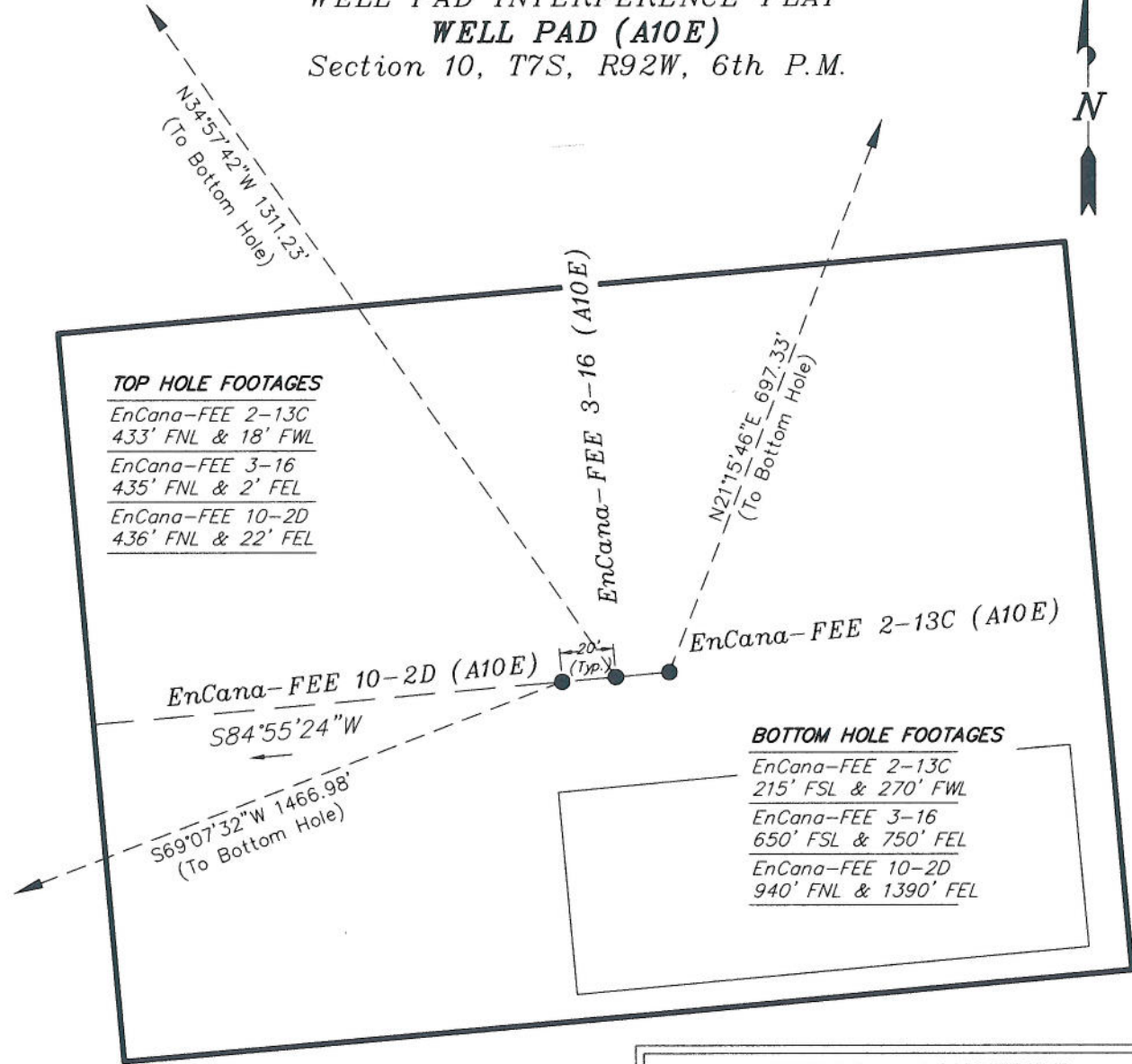
ENCANA OIL & GAS (USA) INC
GENERAL MULTI WELL PLAN
SECTION DRILLING MAP
WELL PAD (A10E)



TRI STATE LAND SURVEYING & CONSULTING		SHEET 1
180 NORTH VERNAL AVE. - VERNAL, UTAH 84078		
(435) 781-2501		
DATE SURVEYED:	SURVEYED BY:	
DATE DRAWN:	DRAWN BY:	
REMOVED:	SCALE:	

ENCANA OIL & GAS (USA) INC

WELL PAD INTERFERENCE PLAT
WELL PAD (A10E)
 Section 10, T7S, R92W, 6th P.M.



TOP HOLE FOOTAGES
 EnCana-FEE 2-13C
 433' FNL & 18' FWL
 EnCana-FEE 3-16
 435' FNL & 2' FEL
 EnCana-FEE 10-2D
 436' FNL & 22' FEL

BOTTOM HOLE FOOTAGES
 EnCana-FEE 2-13C
 215' FSL & 270' FWL
 EnCana-FEE 3-16
 650' FSL & 750' FEL
 EnCana-FEE 10-2D
 940' FNL & 1390' FEL

Note:
 Bearings are based on
 G.P.S. observations.

LATITUDE & LONGITUDE Surface position of Wells (NAD 83)		
WELL	LATITUDE	LONGITUDE
2-13C	39° 28' 03.38"	107° 38' 34.91"
3-16	39° 28' 03.36"	107° 38' 35.16"
10-2D	39° 28' 03.35"	107° 38' 35.42"

RELATIVE COORDINATES From top hole to bottom hole		
WELL	NORTH	EAST
2-13C	650'	253'
3-16	1075'	-751'
10-2D	-523'	-1371'

LATITUDE & LONGITUDE Bottom Hole Position of Wells (NAD 83)		
WELL	LATITUDE	LONGITUDE
2-13C	39° 28' 09.80"	107° 38' 31.67"
3-16	39° 28' 13.99"	107° 38' 44.72"
10-2D	39° 27' 58.20"	107° 38' 52.90"

SURVEYED BY: C.D.S.	DATE SURVEYED: 10-20-06
DRAWN BY: R.V.C.	DATE DRAWN: 11-1-06
SCALE: 1" = 60'	REVISED: F.T.M. 02-01-10

Tri State
 Land Surveying, Inc.
 180 NORTH VERNAL AVE. VERNAL, UTAH 84078
 (435) 781-2501

SHEET
3