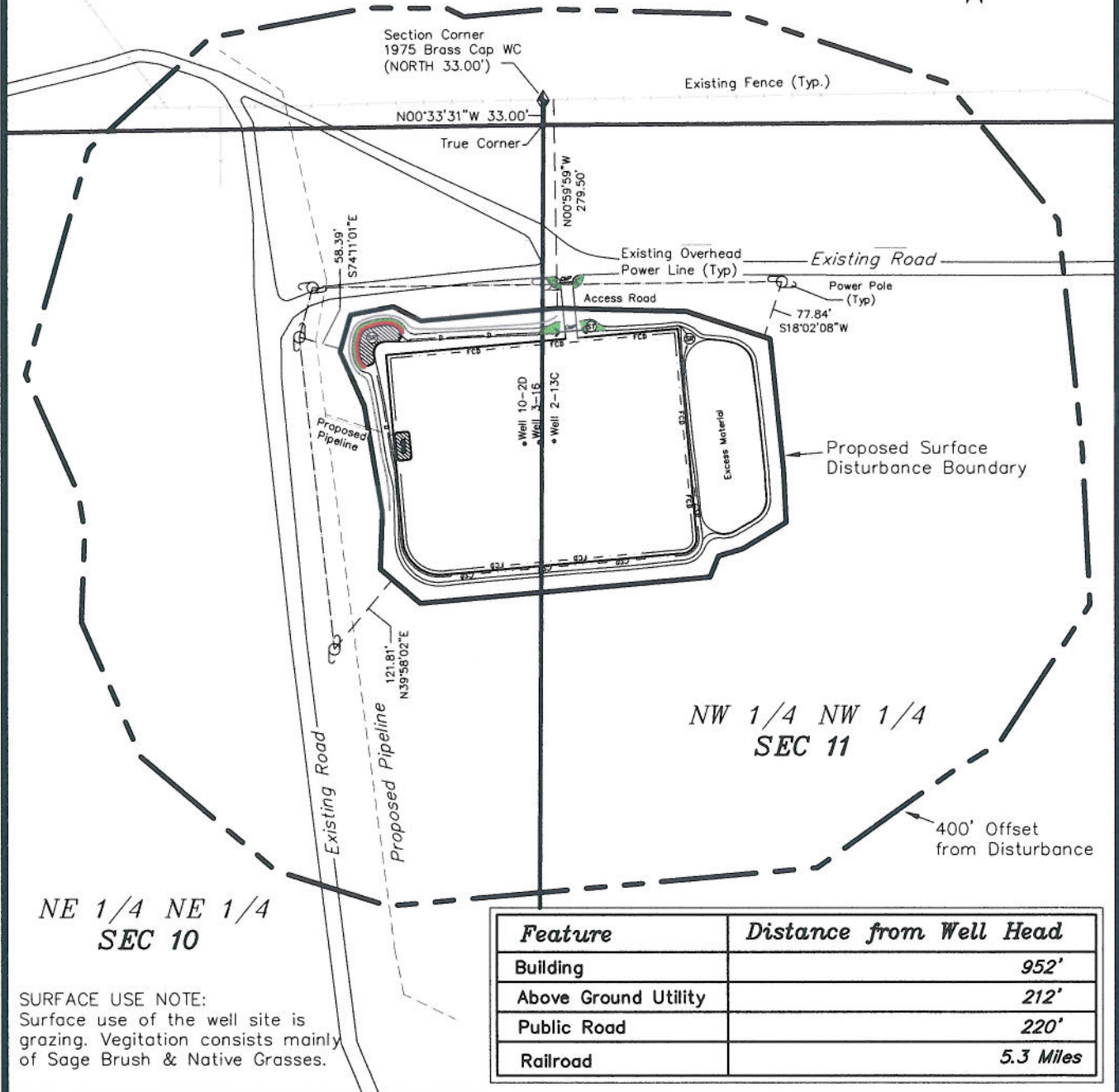
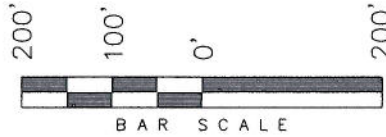


# ENCANA OIL & GAS (USA) INC

## LOCATION DRAWING ADDENDUM TO LEGAL PLATS WELL PAD (A10E)

Section 10, T7S, R92W, 6th P.M.



SURVEYED BY: C.D.S. DATE SURVEYED: 10-20-06  
DRAWN BY: F.T.M. DATE DRAWN: 09-02-09  
SCALE: 1" = 200' REVISED: F.T.M. 02-04-10

**Tri State**  
Land Surveying, Inc.  
180 NORTH VERNAL AVE. VERNAL, UTAH 84078  
(435) 781-2501

SHEET  
2dd