

**CENTER STAKE**

Date Photographed: 10/24/2006

Date Drawn: 11/02/2006

Drawn By: mw

**LOOKING EAST  
ACCESS**

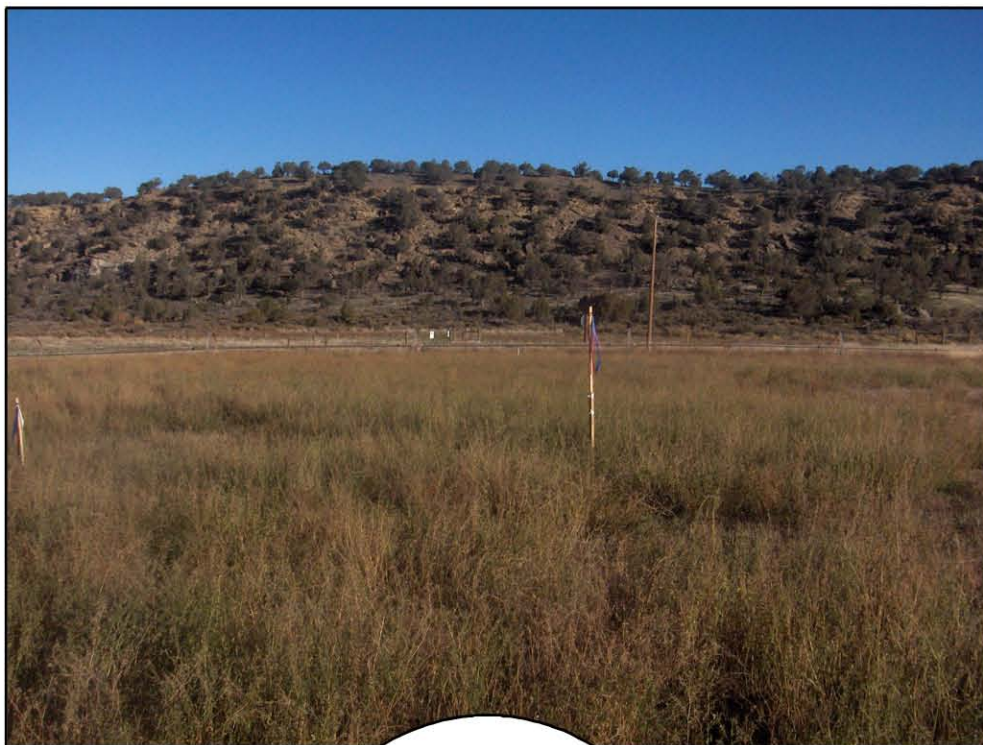
**ENCANA OIL & GAS  
(USA) INC.**

**Well Pad (A10E)**



(435) 781-2501  
180 North Vernal Ave. Vernal, Utah 84078





NORTH

ENCANA OIL & GAS  
(USA) INC.

Well Pad (A10E)

Date Photographed: 10/24/2006

Date Drawn: 11/02/2006

Drawn By: mw



(435) 781-2501  
180 North Vernal Ave. Vernal, Utah 84078

EAST







SOUTH

ENCANA OIL & GAS  
(USA) INC.

Well Pad (A10E)

Date Photographed: 10/24/2006

Date Drawn: 11/02/2006

Drawn By: mw



(435) 781-2501  
180 North Vernal Ave. Vernal, Utah 84078

WEST

