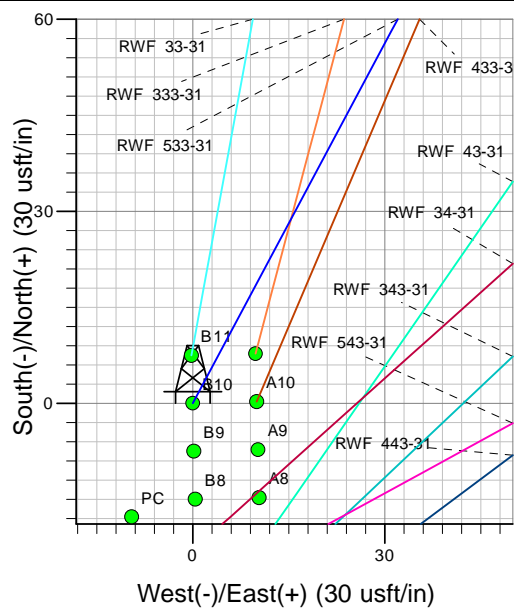
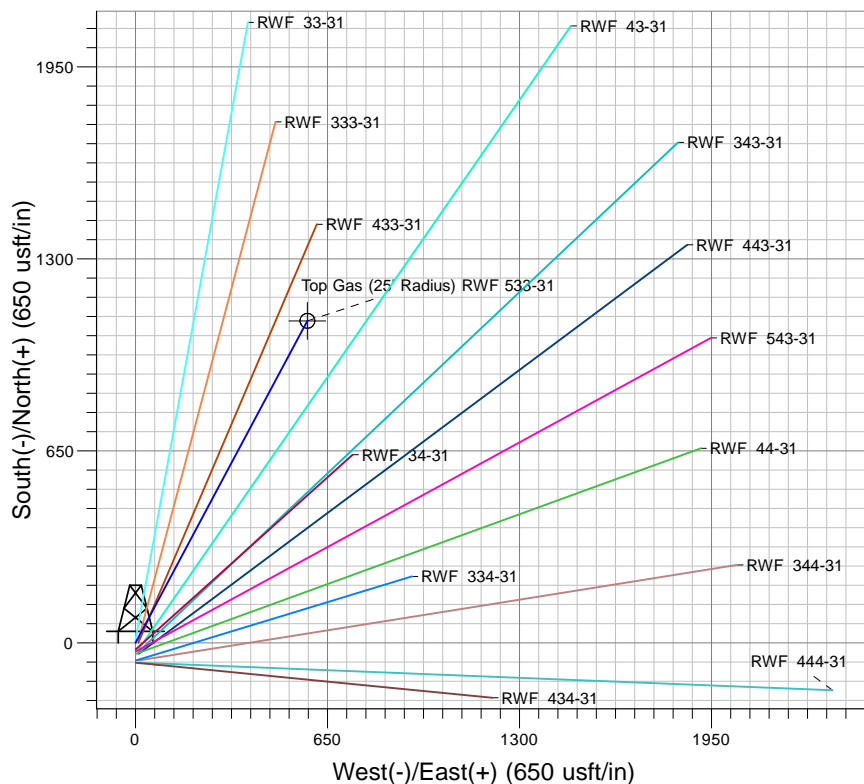
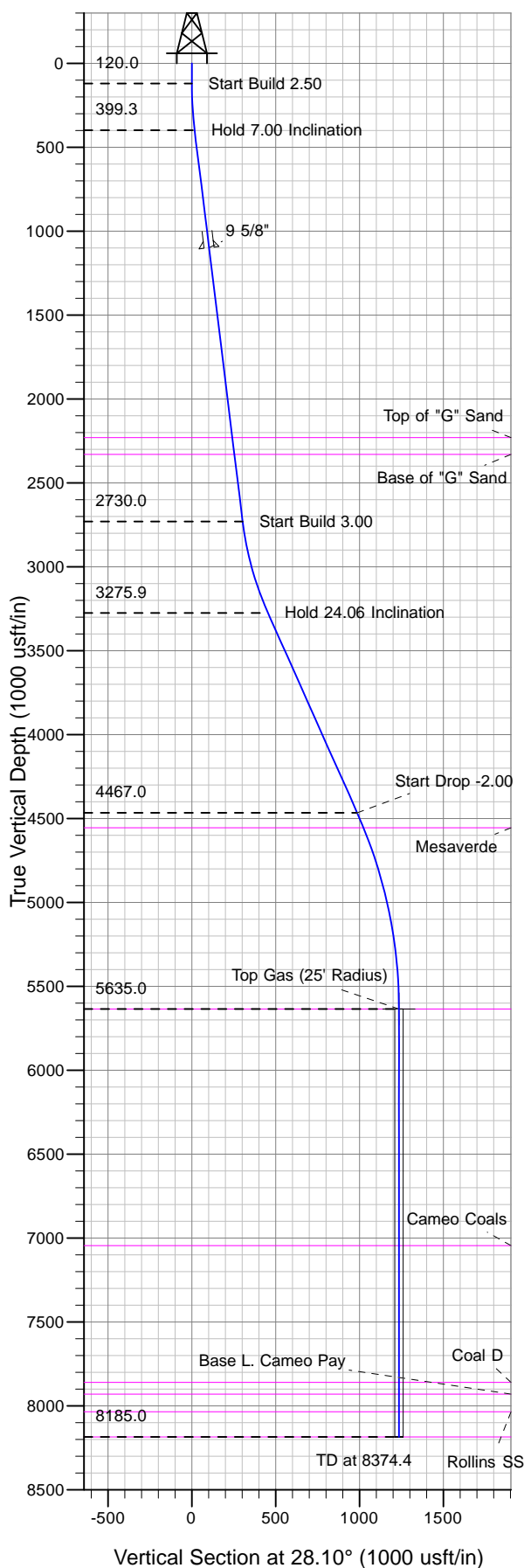




Well Name: RWF 533-31  
Surface Location: RWF 34-31 Pad  
North American Datum 1983 , US State Plane 1983, Colorado Central Zone  
Ground Elevation: 5707.0  
+N/-S +E/-W Northing Easting Latitude Longitude Slot  
0.0 0.0 1607171.89 2314319.21 39° 28' 31.043 N 107° 55' 45.623 W B10  
WELL @ 5733.0usft (SSD 537 (26' KB) kjs)



Project: RU 31-06S-094W  
Site: RWF 34-31 Pad  
Well: RWF 533-31  
Design #1 18Feb10 kjs

**M** Azimuths to True North  
Magnetic North: 10.49°  
Magnetic Field  
Strength: 52383.1nT  
Dip Angle: 65.77°  
Date: 2/18/2010  
Model: IGRF2010

#### ANNOTATIONS

| TVD    | MD     | Inc   | Azi   | +N/-S  | +E/-W | Vsect  | Departure | Annotation             |
|--------|--------|-------|-------|--------|-------|--------|-----------|------------------------|
| 120.0  | 120.0  | 0.00  | 0.00  | 0.0    | 0.0   | 0.0    | 0.0       | Start Build 2.50       |
| 399.3  | 400.0  | 7.00  | 28.08 | 15.1   | 8.0   | 17.1   | 17.1      | Hold 7.00 Inclination  |
| 2730.0 | 2748.2 | 7.00  | 28.08 | 267.6  | 142.7 | 303.3  | 303.3     | Start Build 3.00       |
| 3275.9 | 3316.9 | 24.06 | 28.11 | 401.4  | 214.2 | 455.0  | 455.0     | Hold 24.06 Inclination |
| 4467.0 | 4621.3 | 24.06 | 28.11 | 870.5  | 464.8 | 986.8  | 986.8     | Start Drop -2.00       |
| 5635.0 | 5824.4 | 0.00  | 0.00  | 1090.1 | 582.1 | 1235.7 | 1235.7    | Top Gas                |
| 8185.0 | 8374.4 | 0.00  | 0.00  | 1090.1 | 582.1 | 1235.7 | 1235.7    | TD at 8374.4           |