

Farris RWF 34-31

RWF 444-31, RWF 344-31, RWF 443-31, RWF 343-31, RWF 43-31,
RWF 433-31, RWF 333-31, RWF 434-31, RWF 334-31, RWF 44-31,
RWF 543-31, RWF 34-31, RWF 533-31, RWF 33-31



PHOTO: VIEW FROM PAD CENTER

CAMERA ANGLE: North

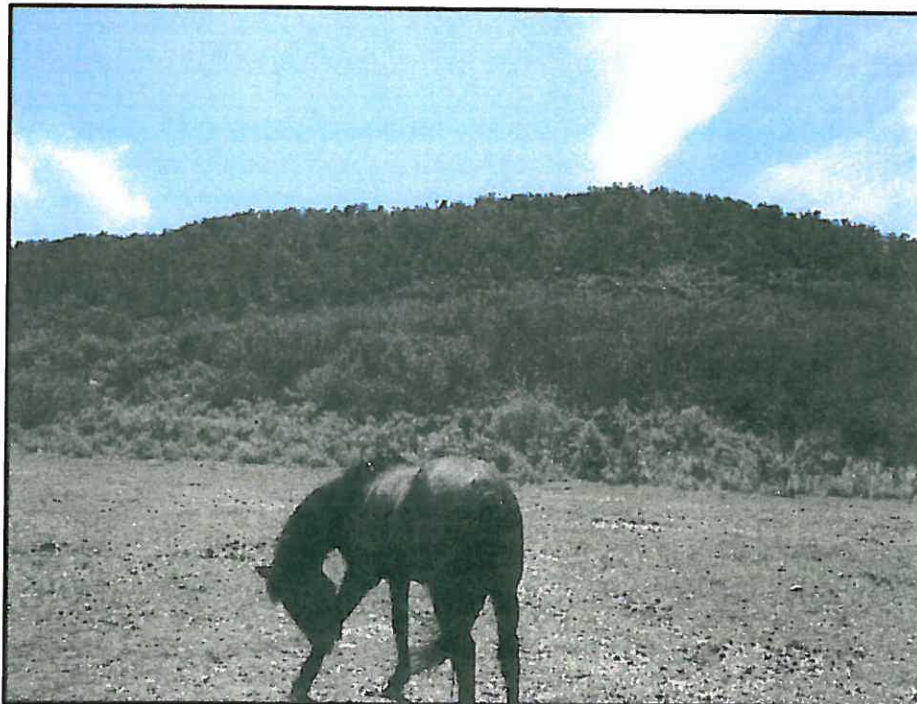


PHOTO: VIEW FROM PAD CENTER

CAMERA ANGLE: South

136 West Third Street
Hwy. 6, Colorado 81606
Ph: (970) 625 1330
Fax: (970) 625 2973



BOOKCLIFF
Survey Services, Inc.

PHOTO DATE: 4/14/10
TAKEN BY: wk
DRAWN BY: wk
SHEET: 1 of 3
PROJECT: Williams



LOCATION PHOTOS Prepared for:

Williams Production, RMT

SE1/4 SW1/4, SECTION 31
T. 6 S., R. 94 W. of the 6th. P.M.
GARFIELD COUNTY, COLORADO

Farris RWF 34-31

RWF 444-31, RWF 344-31, RWF 443-31, RWF 343-31, RWF 43-31,
RWF 433-31, RWF 333-31, RWF 434-31, RWF 334-31, RWF 44-31,
RWF 543-31, RWF 34-31, RWF 533-31, RWF 33-31



PHOTO: VIEW FROM PAD CENTER

CAMERA ANGLE: West



PHOTO: VIEW FROM PAD CENTER

CAMERA ANGLE: East

136 East Third Street
Hifle, Colorado 81600
Ph: (970) 625 1330
Fax: (970) 625 2573



BOOKCLIFF
Survey Services, Inc.

PHOTO DATE: 4/14/10
TAKEN BY: wk
DRAWN BY: wk
SHEET: 2 of 3
PROJECT: Williams



LOCATION PHOTOS Prepared for:
Williams Production, RMT

SE1/4 SW1/4, SECTION 31
T. 6 S., R. 94 W. of the 6th. P.M.
GARFIELD COUNTY, COLORADO