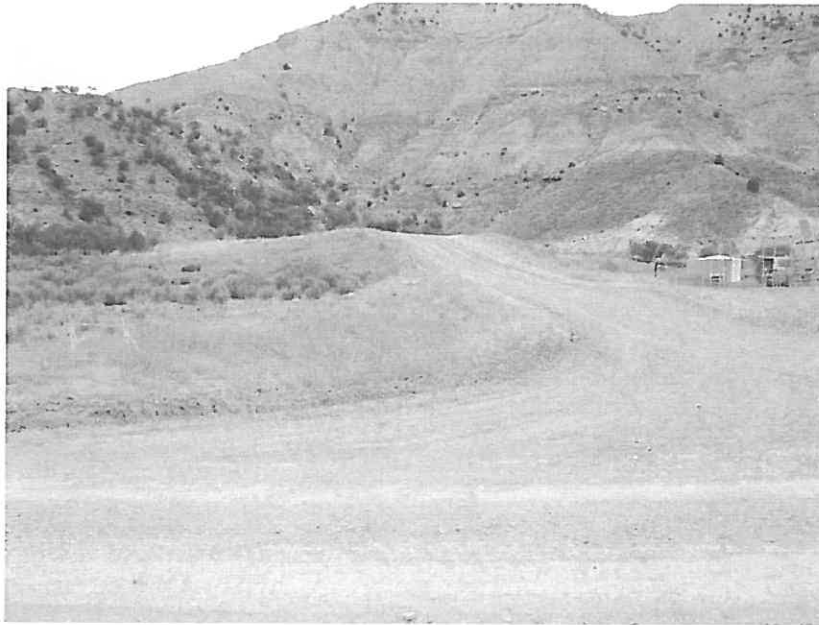


EXXON/MOBIL WELL PAD GM 24-27
 EXISTING WELLS: GM 24-27, GM 324-27, GM 424-27, GM 524-27
 PROPOSED WELLS: GM 13-27, GM 23-27, GM 312-27, GM 313-27, GM 323-27, GM 333-27, GM 412-27,
 GM 413-27, GM 422-27, GM 423-27, GM 512-27, GM 513-27, GM 523-27
 PHOTOS TAKEN 4/21/2010



WELL PAD ACCESS ROAD



WELL PAD OVERVIEW

DATE REVISED: ----

DEL-MONT CONSULTANTS IS PROVIDING GRADING DESIGN FOR THIS PROJECT THAT PROVIDES DIMENSIONS AND VOLUME INFORMATION FOR CONSTRUCTION.

DMC
DEL-MONT CONSULTANTS, INC.
 ENGINEERING • SURVEYING • PLANNING
 180 Colorado Ave. • Montrose, CO 81401 • (970) 240-4951 • (970) 240-4942 fax
 www.del-mont.com • service@del-mont.com

SE SW, S27, T6S, R96W, 6TH P.M.
 WELL LOCATION PLAT

DMC JOB NO: 10030

DATE ISSUED: 2010-04-19

DATE SURVEYED: 2008-11-15

PLAT: 1 of 3

DESIGNED BY	MGW	SCALE	1"=100'
CHECKED BY	SNS	FILE NAME	10030C-GM24-27_PAD_SITE

Williams

WELL PAD GM 24-27
 GARFIELD COUNTY, CO
 WILLIAMS PRODUCTION, RMT

EXXON/MOBIL WELL PAD GM 24-27
 EXISTING WELLS: GM 24-27, GM 324-27, GM 424-27, GM 524-27
 PROPOSED WELLS: GM 13-27, GM 23-27, GM 312-27, GM 313-27, GM 323-27, GM 333-27, GM 412-27,
 GM 413-27, GM 422-27, GM 423-27, GM 512-27, GM 513-27, GM 523-27
 PHOTOS TAKEN 4/21/2010



WELL PAD LOOKING NORTH



WELL PAD LOOKING EAST

DATE REVISED ----

DEL-MONT CONSULTANTS IS PROVIDING GRADING DESIGN FOR THIS PROJECT THAT PROVIDES DIMENSIONS AND VOLUME INFORMATION FOR CONSTRUCTION.

DMC
 DEL-MONT CONSULTANTS, INC.
 ENGINEERING • SURVEYING • PLANNING
 184 Colorado Ave. • Montrose, CO 81401 • (970) 249-2551 • (970) 249-2542 fax
 www.del-mont.com • service@del-mont.com

DESIGNED BY: MGW
 SCALE: 1"=100'
 CHECKED BY: SNS
 FILE NAME: 10030C-GM24-27_PAD_SITE



SE SW, S27, T6S, R96W, 6TH P.M.
 WELL LOCATION PLAT

WELL PAD GM 24-27
 GARFIELD COUNTY, CO
 WILLIAMS PRODUCTION, RMT

DMC JOB NO: 10030

DATE ISSUED: 2010-04-19

DATE SURVEYED: 2008-11-15

PLAT: 2 of 3

EXXON/MOBIL WELL PAD GM 24-27
 EXISTING WELLS: GM 24-27, GM 324-27, GM 424-27, GM 524-27
 PROPOSED WELLS: GM 13-27, GM 23-27, GM 312-27, GM 313-27, GM 323-27, GM 333-27, GM 412-27,
 GM 413-27, GM 422-27, GM 423-27, GM 512-27, GM 513-27, GM 523-27
 PHOTOS 4/21/2010



WELL PAD LOOKING SOUTH



WELL PAD LOOKING WEST

DATE REVISED

DEL-MONT CONSULTANTS IS PROVIDING GRADING DESIGN FOR THIS PROJECT THAT PROVIDES DIMENSIONS AND VOLUME INFORMATION FOR CONSTRUCTION.



SE SW, S27, T6S, R96W, 6TH P.M.
 WELL LOCATION PLAT

DMC JOB NO. 10030

DATE ISSUED 2010-04-19

DATE SURVEYED 2008-11-15

PLAT 3 of 3

DESIGNED BY MGW
 SCALE 1"=100'
 CHECKED BY SNS
 FILE NAME 10030C-GM24-27_PAD_SITE



WELL PAD GM 24-27
 GARFIELD COUNTY, CO
 WILLIAMS PRODUCTION, RMT