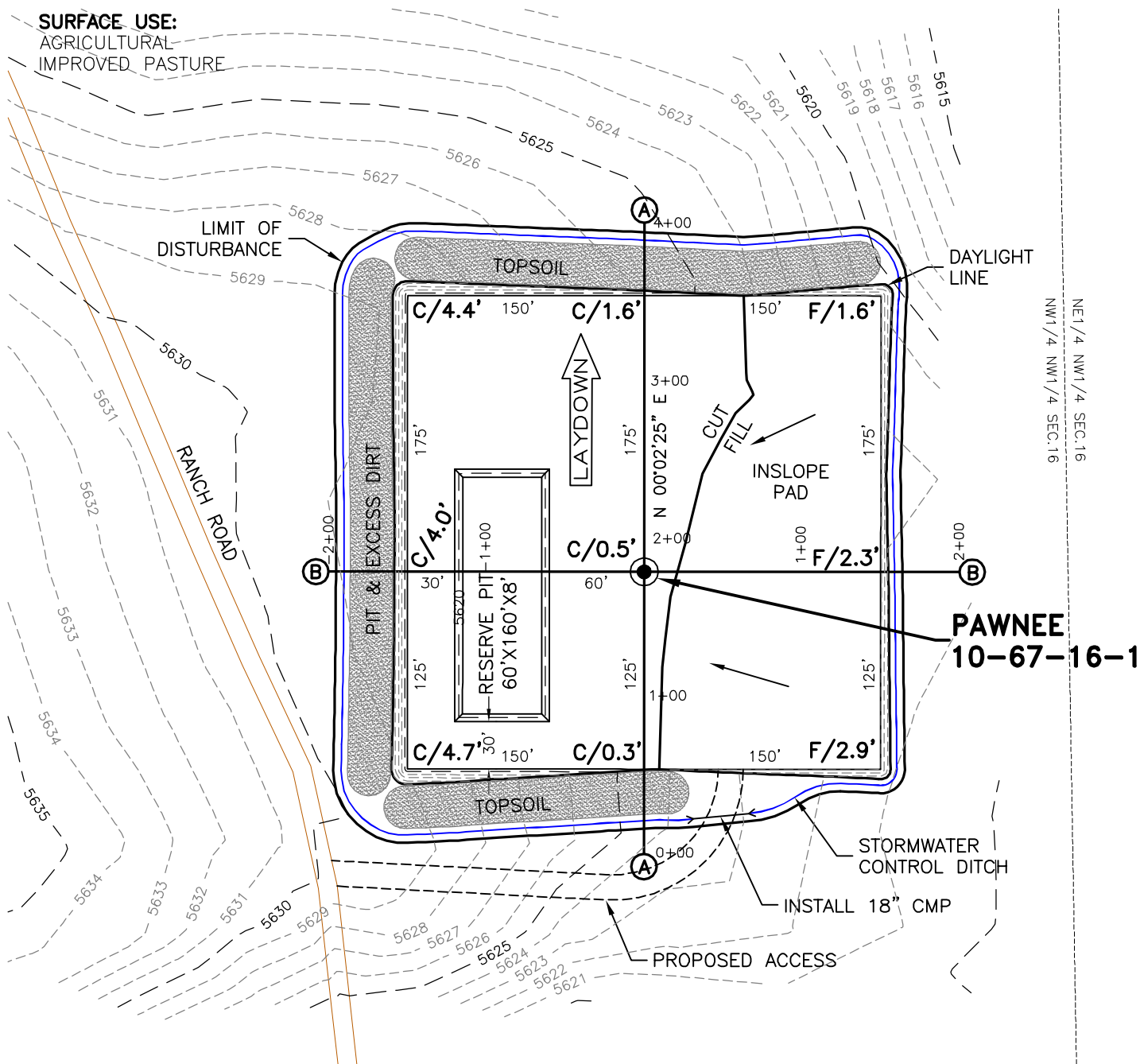


**VEGETATION:**  
PASTURE—GRASSES

# CONSTRUCTION LAYOUT DRAWING

1 of 2

**SURFACE USE:**  
AGRICULTURAL  
IMPROVED PASTURE

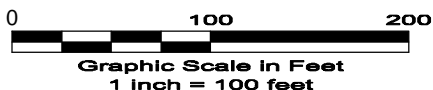


## NOTES:

- 1) 10% ALLOWANCE IS MADE FOR SOIL EXPANSION.
- 2) PIT LOCATION & SIZE TO BE DETERMINED AT TIME OF CONSTRUCTION.



North



4/12/10



LAND SURVEYING AND MAPPING  
LAFAYETTE - WINTER PARK  
Ph 303 666 0379 Fx 303 665 6320

PAD 300'x300' ELEV=5624.2

DISTURBED AREA= 3.1 ACRES

## ESTIMATED DIRT QUANTITIES

CUTx10%	FILL	PIT	TOPSOIL	EXCESS
5,430	1,810	2,780	3,590	30

NOTE: VOLUMES IN CUBIC YARDS. TOPSOIL INCLUDED IN VOLUMES AT A DEPTH OF 12". PIT NOT INCLUDED IN TOTAL EXCESS.

**RUBICON OIL & GAS LLC**  
PAWNEE 10-67-16-1

NW1/4 NW1/4 SEC. 16 T10N R67W  
6th PM WELD COUNTY COLORADO