

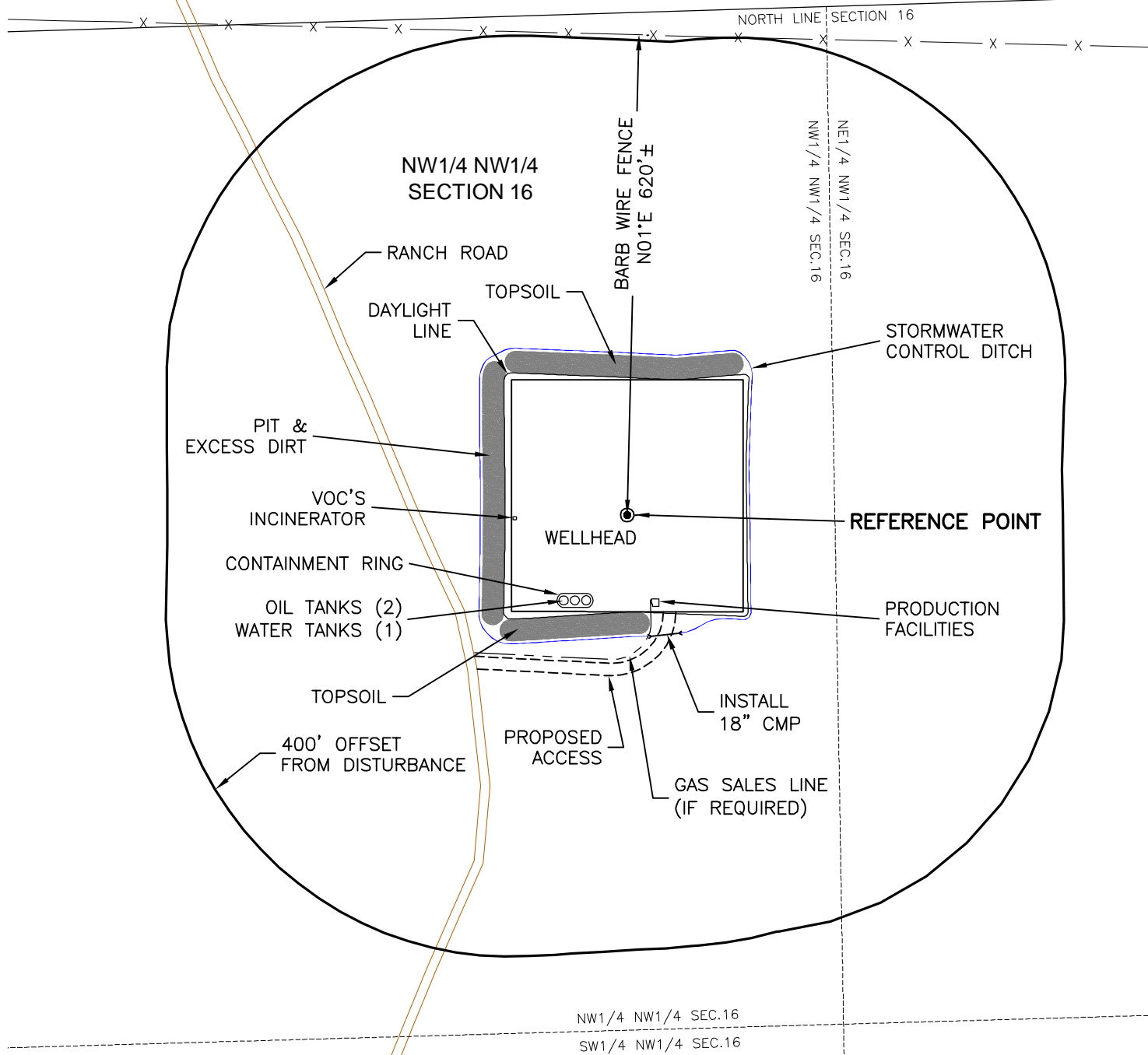
VEGETATION:
PASTURE—GRASSES

SURFACE USE:
AGRICULTURAL
IMPROVED PASTURE

LOCATION DRAWING

REFERENCE POINT

LATITUDE: 40.839425
LONGITUDE: -104.901937
FOOTAGE: 650 FNL 1042 FWL
GROUND ELEVATION: 5624.7
PDOP: 1.8 DATE: 4/2/2010
INSTRUMENT OPERATOR: DJM



North

0 200 400

Graphic Scale in Feet
1 inch = 200 feet

DISTURBANCE ACREAGE:
3.1± DRILLING OPERATIONS
1.0± INTERIM RECLAIM

4/12/10



LAND SURVEYING AND MAPPING
LAFAYETTE - WINTER PARK
Ph 303 666 0379 Fx 303 665 6320

RUBICON OIL & GAS LLC
PAWNEE 10-67-16-1

NW1/4 NW1/4 SEC. 16 T10N R67W
6th PM WELD COUNTY COLORADO