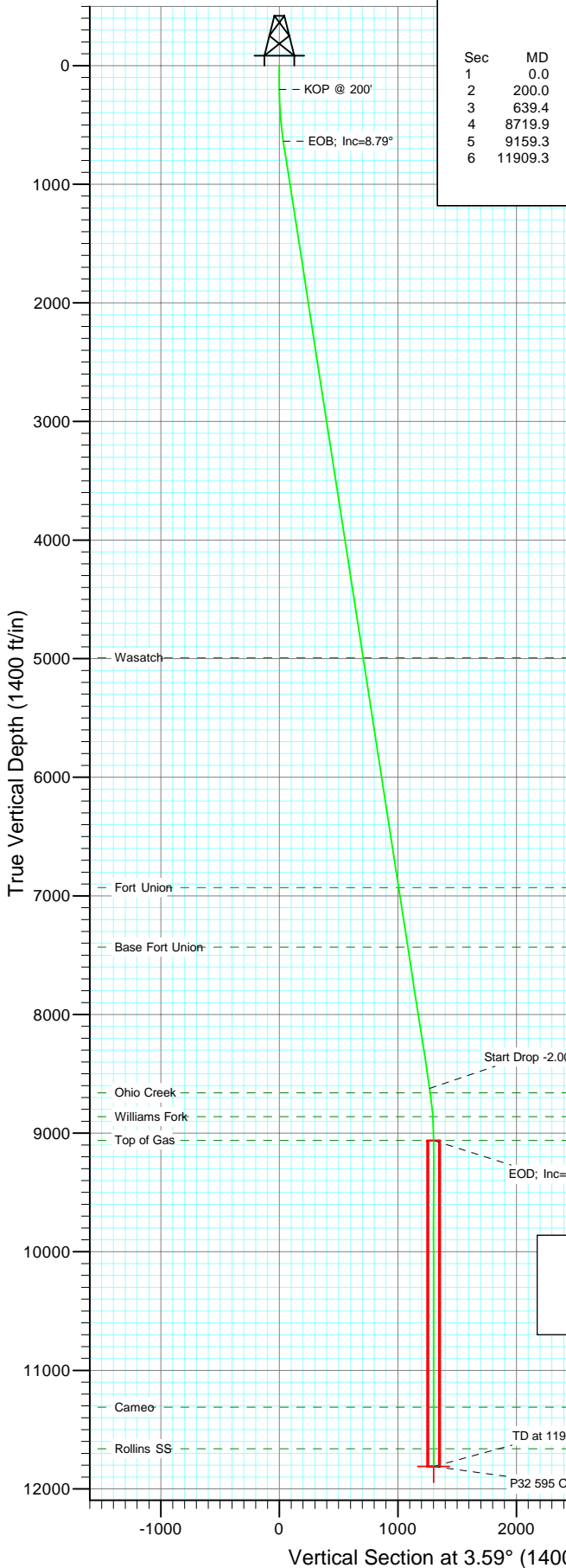


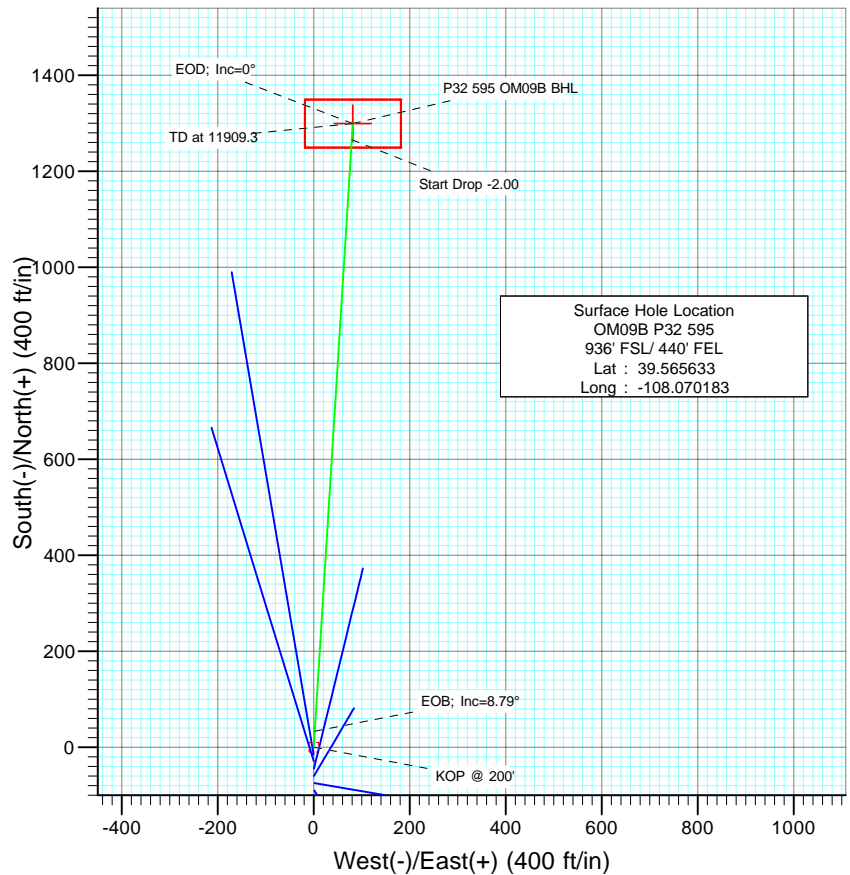


Berry Petroleum Company

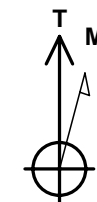
Project: Garfield County  
Site: P32 595  
Well: OM09B P32 595  
Wellbore: DD  
Design: Plan #1



SECTION DETAILS										
Sec	MD	Inc	Azi	TVD	+N/-S	+E/-W	DLeg	TFace	VSec	Target
1	0.0	0.00	0.00	0.0	0.0	0.0	0.00	0.00	0.0	P32 595 OM09B BHL
2	200.0	0.00	0.00	200.0	0.0	0.0	0.00	0.00	0.0	
3	639.4	8.79	3.59	637.7	33.6	2.1	2.00	3.59	33.6	
4	8719.9	8.79	3.59	8623.3	1265.7	79.4	0.00	0.00	1268.2	
5	9159.3	0.00	0.00	9061.0	1299.3	81.5	2.00	180.00	1301.8	
6	11909.3	0.00	0.00	11811.0	1299.3	81.5	0.00	0.00	1301.8	



FORMATION TOP DETAILS		
TVDPath	MDPath	Formation
4991.0	5044.4	Wasatch
6931.0	7007.5	Fort Union
7431.0	7513.4	Base Fort Union
8661.0	8758.0	Ohio Creek
8861.0	8959.1	Williams Fork
9061.0	9159.3	Top of Gas
11311.0	11409.3	Cameo
11661.0	11759.3	Rollins SS



Azimuths to True North  
Magnetic North: 10.67°

Magnetic Field  
Strength: 52516.9nT  
Dip Angle: 65.85°  
Date: 2/23/2009  
Model: IGRF200510

DESIGN DETAILS: Plan #1

95xxx; LR  
KB OM09B P32 @ 8386.0ft (Rig Name)

Target	Azimuth	Origin	N/S	E/W	From TVD
P32 595 OM09B BHL	3.59	Slot	0.0	0.0	0.0

# Cathedral Energy Services

## Planning Report

<b>Database:</b>	EDM 2003.21 US Multi Users DB	<b>Local Co-ordinate Reference:</b>	Well OM09B P32 595
<b>Company:</b>	Berry Petroleum Company (NAD 83)	<b>TVD Reference:</b>	KB OM09B P32 @ 8386.0ft (Rig Name)
<b>Project:</b>	Garfield County	<b>MD Reference:</b>	KB OM09B P32 @ 8386.0ft (Rig Name)
<b>Site:</b>	P32 595	<b>North Reference:</b>	True
<b>Well:</b>	OM09B P32 595	<b>Survey Calculation Method:</b>	Minimum Curvature
<b>Wellbore:</b>	DD		
<b>Design:</b>	Plan #1		

<b>Project</b>	Garfield County		
<b>Map System:</b>	US State Plane 1983	<b>System Datum:</b>	Mean Sea Level
<b>Geo Datum:</b>	North American Datum 1983		
<b>Map Zone:</b>	Colorado Central Zone		

Site		P32 595			
Site Position:		Northing:	1,641,133.56 ft	Latitude:	39.565553
From:	Lat/Long	Easting:	2,275,511.10 ft	Longitude:	-108.070183
Position Uncertainty:	0.0 ft	Slot Radius:	in	Grid Convergence:	-1.62 °

Well	OM09B P32 595					
Well Position	+N/-S	0.0 ft	Northing:	1,641,162.68 ft	Latitude:	39.565633
	+E/-W	0.0 ft	Easting:	2,275,511.93 ft	Longitude:	-108.070183
Position Uncertainty		0.0 ft	Wellhead Elevation:	ft	Ground Level:	8,358.0 ft

<b>Wellbore</b>	DD				
<b>Magnetics</b>	<b>Model Name</b>	<b>Sample Date</b>	<b>Declination</b>	<b>Dip Angle</b>	<b>Field Strength</b>
			(°)	(°)	(nT)
	IGRF200510	2/23/2009	10.67	65.85	52,517

<b>Design</b>	Plan #1			
<b>Audit Notes:</b>				
<b>Version:</b>	<b>Phase:</b>	PLAN	<b>Tie On Depth:</b>	0.0
<b>Vertical Section:</b>	<b>Depth From (TVD)</b>	<b>+N/-S</b>	<b>+E/-W</b>	<b>Direction</b>
	(ft)	(ft)	(ft)	(°)
	0.0	0.0	0.0	3.59

<b>Plan Sections</b>										
<b>Measured Depth</b>	<b>Inclination</b>	<b>Azimuth</b>	<b>Vertical Depth</b>	<b>+N/-S</b>	<b>+E/-W</b>	<b>Dogleg Rate</b>	<b>Build Rate</b>	<b>Turn Rate</b>	<b>TFO</b>	<b>Target</b>
(ft)	(°)	(°)	(ft)	(ft)	(ft)	(°/100ft)	(°/100ft)	(°/100ft)	(°)	
0.0	0.00	0.00	0.0	0.0	0.0	0.00	0.00	0.00	0.00	
200.0	0.00	0.00	200.0	0.0	0.0	0.00	0.00	0.00	0.00	
639.4	8.79	3.59	637.7	33.6	2.1	2.00	2.00	0.00	3.59	
8,719.9	8.79	3.59	8,623.3	1,265.7	79.4	0.00	0.00	0.00	0.00	
9,159.3	0.00	0.00	9,061.0	1,299.3	81.5	2.00	-2.00	0.00	180.00	
11,909.3	0.00	0.00	11,811.0	1,299.3	81.5	0.00	0.00	0.00	0.00	P32 595 OM09B BHL

# Cathedral Energy Services

## Planning Report

<b>Database:</b>	EDM 2003.21 US Multi Users DB	<b>Local Co-ordinate Reference:</b>	Well OM09B P32 595
<b>Company:</b>	Berry Petroleum Company (NAD 83)	<b>TVD Reference:</b>	KB OM09B P32 @ 8386.0ft (Rig Name)
<b>Project:</b>	Garfield County	<b>MD Reference:</b>	KB OM09B P32 @ 8386.0ft (Rig Name)
<b>Site:</b>	P32 595	<b>North Reference:</b>	True
<b>Well:</b>	OM09B P32 595	<b>Survey Calculation Method:</b>	Minimum Curvature
<b>Wellbore:</b>	DD		
<b>Design:</b>	Plan #1		

### Planned Survey

Measured Depth (ft)	Inclination (°)	Azimuth (°)	Vertical Depth (ft)	+N/-S (ft)	+E/-W (ft)	Vertical Section (ft)	Dogleg Rate (°/100ft)	Build Rate (°/100ft)	Comments / Formations
0.0	0.00	0.00	0.0	0.0	0.0	0.0	0.00	0.00	
100.0	0.00	0.00	100.0	0.0	0.0	0.0	0.00	0.00	
200.0	0.00	0.00	200.0	0.0	0.0	0.0	0.00	0.00	KOP @ 200'
300.0	2.00	3.59	300.0	1.7	0.1	1.7	2.00	2.00	
400.0	4.00	3.59	399.8	7.0	0.4	7.0	2.00	2.00	
500.0	6.00	3.59	499.5	15.7	1.0	15.7	2.00	2.00	
600.0	8.00	3.59	598.7	27.8	1.7	27.9	2.00	2.00	
639.4	8.79	3.59	637.7	33.6	2.1	33.6	2.00	2.00	EOB; Inc=8.79°
700.0	8.79	3.59	697.6	42.8	2.7	42.9	0.00	0.00	
800.0	8.79	3.59	796.4	58.1	3.6	58.2	0.00	0.00	
900.0	8.79	3.59	895.2	73.3	4.6	73.4	0.00	0.00	
1,000.0	8.79	3.59	994.0	88.6	5.6	88.7	0.00	0.00	
1,100.0	8.79	3.59	1,092.9	103.8	6.5	104.0	0.00	0.00	
1,200.0	8.79	3.59	1,191.7	119.0	7.5	119.3	0.00	0.00	
1,300.0	8.79	3.59	1,290.5	134.3	8.4	134.6	0.00	0.00	
1,400.0	8.79	3.59	1,389.3	149.5	9.4	149.8	0.00	0.00	
1,500.0	8.79	3.59	1,488.2	164.8	10.3	165.1	0.00	0.00	
1,600.0	8.79	3.59	1,587.0	180.0	11.3	180.4	0.00	0.00	
1,700.0	8.79	3.59	1,685.8	195.3	12.2	195.7	0.00	0.00	
1,800.0	8.79	3.59	1,784.7	210.5	13.2	211.0	0.00	0.00	
1,900.0	8.79	3.59	1,883.5	225.8	14.2	226.2	0.00	0.00	
2,000.0	8.79	3.59	1,982.3	241.0	15.1	241.5	0.00	0.00	
2,100.0	8.79	3.59	2,081.1	256.3	16.1	256.8	0.00	0.00	
2,200.0	8.79	3.59	2,180.0	271.5	17.0	272.1	0.00	0.00	
2,300.0	8.79	3.59	2,278.8	286.8	18.0	287.3	0.00	0.00	
2,400.0	8.79	3.59	2,377.6	302.0	18.9	302.6	0.00	0.00	
2,500.0	8.79	3.59	2,476.4	317.3	19.9	317.9	0.00	0.00	
2,600.0	8.79	3.59	2,575.3	332.5	20.9	333.2	0.00	0.00	
2,700.0	8.79	3.59	2,674.1	347.8	21.8	348.5	0.00	0.00	
2,800.0	8.79	3.59	2,772.9	363.0	22.8	363.7	0.00	0.00	
2,900.0	8.79	3.59	2,871.7	378.3	23.7	379.0	0.00	0.00	
3,000.0	8.79	3.59	2,970.6	393.5	24.7	394.3	0.00	0.00	
3,100.0	8.79	3.59	3,069.4	408.8	25.6	409.6	0.00	0.00	
3,200.0	8.79	3.59	3,168.2	424.0	26.6	424.8	0.00	0.00	
3,300.0	8.79	3.59	3,267.0	439.3	27.5	440.1	0.00	0.00	
3,400.0	8.79	3.59	3,365.9	454.5	28.5	455.4	0.00	0.00	
3,500.0	8.79	3.59	3,464.7	469.8	29.5	470.7	0.00	0.00	
3,600.0	8.79	3.59	3,563.5	485.0	30.4	486.0	0.00	0.00	
3,700.0	8.79	3.59	3,662.3	500.3	31.4	501.2	0.00	0.00	
3,800.0	8.79	3.59	3,761.2	515.5	32.3	516.5	0.00	0.00	
3,900.0	8.79	3.59	3,860.0	530.8	33.3	531.8	0.00	0.00	
4,000.0	8.79	3.59	3,958.8	546.0	34.2	547.1	0.00	0.00	
4,100.0	8.79	3.59	4,057.7	561.3	35.2	562.4	0.00	0.00	
4,200.0	8.79	3.59	4,156.5	576.5	36.1	577.6	0.00	0.00	
4,300.0	8.79	3.59	4,255.3	591.7	37.1	592.9	0.00	0.00	
4,400.0	8.79	3.59	4,354.1	607.0	38.1	608.2	0.00	0.00	
4,500.0	8.79	3.59	4,453.0	622.2	39.0	623.5	0.00	0.00	
4,600.0	8.79	3.59	4,551.8	637.5	40.0	638.7	0.00	0.00	
4,700.0	8.79	3.59	4,650.6	652.7	40.9	654.0	0.00	0.00	
4,800.0	8.79	3.59	4,749.4	668.0	41.9	669.3	0.00	0.00	
4,900.0	8.79	3.59	4,848.3	683.2	42.8	684.6	0.00	0.00	
5,000.0	8.79	3.59	4,947.1	698.5	43.8	699.9	0.00	0.00	

# Cathedral Energy Services

## Planning Report

<b>Database:</b>	EDM 2003.21 US Multi Users DB	<b>Local Co-ordinate Reference:</b>	Well OM09B P32 595
<b>Company:</b>	Berry Petroleum Company (NAD 83)	<b>TVD Reference:</b>	KB OM09B P32 @ 8386.0ft (Rig Name)
<b>Project:</b>	Garfield County	<b>MD Reference:</b>	KB OM09B P32 @ 8386.0ft (Rig Name)
<b>Site:</b>	P32 595	<b>North Reference:</b>	True
<b>Well:</b>	OM09B P32 595	<b>Survey Calculation Method:</b>	Minimum Curvature
<b>Wellbore:</b>	DD		
<b>Design:</b>	Plan #1		

Planned Survey									
Measured Depth (ft)	Inclination (°)	Azimuth (°)	Vertical Depth (ft)	+N/-S (ft)	+E/-W (ft)	Vertical Section (ft)	Dogleg Rate (°/100ft)	Build Rate (°/100ft)	Comments / Formations
5,044.4	8.79	3.59	4,991.0	705.3	44.2	706.7	0.00	0.00	Wasatch
5,100.0	8.79	3.59	5,045.9	713.7	44.8	715.1	0.00	0.00	
5,200.0	8.79	3.59	5,144.7	729.0	45.7	730.4	0.00	0.00	
5,300.0	8.79	3.59	5,243.6	744.2	46.7	745.7	0.00	0.00	
5,400.0	8.79	3.59	5,342.4	759.5	47.6	761.0	0.00	0.00	
5,500.0	8.79	3.59	5,441.2	774.7	48.6	776.3	0.00	0.00	
5,600.0	8.79	3.59	5,540.0	790.0	49.5	791.5	0.00	0.00	
5,700.0	8.79	3.59	5,638.9	805.2	50.5	806.8	0.00	0.00	
5,800.0	8.79	3.59	5,737.7	820.5	51.4	822.1	0.00	0.00	
5,900.0	8.79	3.59	5,836.5	835.7	52.4	837.4	0.00	0.00	
6,000.0	8.79	3.59	5,935.3	851.0	53.4	852.6	0.00	0.00	Fort Union
6,100.0	8.79	3.59	6,034.2	866.2	54.3	867.9	0.00	0.00	
6,200.0	8.79	3.59	6,133.0	881.5	55.3	883.2	0.00	0.00	
6,300.0	8.79	3.59	6,231.8	896.7	56.2	898.5	0.00	0.00	
6,400.0	8.79	3.59	6,330.6	912.0	57.2	913.8	0.00	0.00	
6,500.0	8.79	3.59	6,429.5	927.2	58.1	929.0	0.00	0.00	
6,600.0	8.79	3.59	6,528.3	942.5	59.1	944.3	0.00	0.00	
6,700.0	8.79	3.59	6,627.1	957.7	60.1	959.6	0.00	0.00	
6,800.0	8.79	3.59	6,726.0	973.0	61.0	974.9	0.00	0.00	
6,900.0	8.79	3.59	6,824.8	988.2	62.0	990.2	0.00	0.00	
7,000.0	8.79	3.59	6,923.6	1,003.5	62.9	1,005.4	0.00	0.00	Base Fort Union
7,007.5	8.79	3.59	6,931.0	1,004.6	63.0	1,006.6	0.00	0.00	
7,100.0	8.79	3.59	7,022.4	1,018.7	63.9	1,020.7	0.00	0.00	
7,200.0	8.79	3.59	7,121.3	1,034.0	64.8	1,036.0	0.00	0.00	
7,300.0	8.79	3.59	7,220.1	1,049.2	65.8	1,051.3	0.00	0.00	
7,400.0	8.79	3.59	7,318.9	1,064.5	66.7	1,066.5	0.00	0.00	
7,500.0	8.79	3.59	7,417.7	1,079.7	67.7	1,081.8	0.00	0.00	
7,513.4	8.79	3.59	7,431.0	1,081.7	67.8	1,083.9	0.00	0.00	
7,600.0	8.79	3.59	7,516.6	1,094.9	68.7	1,097.1	0.00	0.00	
7,700.0	8.79	3.59	7,615.4	1,110.2	69.6	1,112.4	0.00	0.00	Start Drop -2.00 Ohio Creek
7,800.0	8.79	3.59	7,714.2	1,125.4	70.6	1,127.7	0.00	0.00	
7,900.0	8.79	3.59	7,813.0	1,140.7	71.5	1,142.9	0.00	0.00	
8,000.0	8.79	3.59	7,911.9	1,155.9	72.5	1,158.2	0.00	0.00	
8,100.0	8.79	3.59	8,010.7	1,171.2	73.4	1,173.5	0.00	0.00	
8,200.0	8.79	3.59	8,109.5	1,186.4	74.4	1,188.8	0.00	0.00	
8,300.0	8.79	3.59	8,208.3	1,201.7	75.4	1,204.0	0.00	0.00	
8,400.0	8.79	3.59	8,307.2	1,216.9	76.3	1,219.3	0.00	0.00	
8,500.0	8.79	3.59	8,406.0	1,232.2	77.3	1,234.6	0.00	0.00	
8,600.0	8.79	3.59	8,504.8	1,247.4	78.2	1,249.9	0.00	0.00	Williams Fork
8,700.0	8.79	3.59	8,603.6	1,262.7	79.2	1,265.2	0.00	0.00	
8,719.9	8.79	3.59	8,623.3	1,265.7	79.4	1,268.2	0.00	0.00	
8,758.0	8.03	3.59	8,661.0	1,271.3	79.7	1,273.8	2.00	-2.00	
8,800.0	7.19	3.59	8,702.6	1,276.8	80.1	1,279.3	2.00	-2.00	
8,900.0	5.19	3.59	8,802.0	1,287.6	80.7	1,290.1	2.00	-2.00	
8,959.1	4.00	3.59	8,861.0	1,292.3	81.0	1,294.8	2.00	-2.00	
9,000.0	3.19	3.59	8,901.8	1,294.9	81.2	1,297.4	2.00	-2.00	
9,100.0	1.19	3.59	9,001.7	1,298.7	81.4	1,301.2	2.00	-2.00	
9,159.3	0.00	0.00	9,061.0	1,299.3	81.5	1,301.8	2.00	-2.00	
9,200.0	0.00	0.00	9,101.7	1,299.3	81.5	1,301.8	0.00	0.00	EOD; Inc=0° - Top of Gas
9,300.0	0.00	0.00	9,201.7	1,299.3	81.5	1,301.8	0.00	0.00	
9,400.0	0.00	0.00	9,301.7	1,299.3	81.5	1,301.8	0.00	0.00	
9,500.0	0.00	0.00	9,401.7	1,299.3	81.5	1,301.8	0.00	0.00	

# Cathedral Energy Services

## Planning Report

<b>Database:</b>	EDM 2003.21 US Multi Users DB	<b>Local Co-ordinate Reference:</b>	Well OM09B P32 595
<b>Company:</b>	Berry Petroleum Company (NAD 83)	<b>TVD Reference:</b>	KB OM09B P32 @ 8386.0ft (Rig Name)
<b>Project:</b>	Garfield County	<b>MD Reference:</b>	KB OM09B P32 @ 8386.0ft (Rig Name)
<b>Site:</b>	P32 595	<b>North Reference:</b>	True
<b>Well:</b>	OM09B P32 595	<b>Survey Calculation Method:</b>	Minimum Curvature
<b>Wellbore:</b>	DD		
<b>Design:</b>	Plan #1		

Planned Survey									
Measured Depth (ft)	Inclination (°)	Azimuth (°)	Vertical Depth (ft)	+N/-S (ft)	+E/-W (ft)	Vertical Section (ft)	Dogleg Rate (°/100ft)	Build Rate (°/100ft)	Comments / Formations
9,600.0	0.00	0.00	9,501.7	1,299.3	81.5	1,301.8	0.00	0.00	
9,700.0	0.00	0.00	9,601.7	1,299.3	81.5	1,301.8	0.00	0.00	
9,800.0	0.00	0.00	9,701.7	1,299.3	81.5	1,301.8	0.00	0.00	
9,900.0	0.00	0.00	9,801.7	1,299.3	81.5	1,301.8	0.00	0.00	
10,000.0	0.00	0.00	9,901.7	1,299.3	81.5	1,301.8	0.00	0.00	
10,100.0	0.00	0.00	10,001.7	1,299.3	81.5	1,301.8	0.00	0.00	
10,200.0	0.00	0.00	10,101.7	1,299.3	81.5	1,301.8	0.00	0.00	
10,300.0	0.00	0.00	10,201.7	1,299.3	81.5	1,301.8	0.00	0.00	
10,400.0	0.00	0.00	10,301.7	1,299.3	81.5	1,301.8	0.00	0.00	
10,500.0	0.00	0.00	10,401.7	1,299.3	81.5	1,301.8	0.00	0.00	
10,600.0	0.00	0.00	10,501.7	1,299.3	81.5	1,301.8	0.00	0.00	
10,700.0	0.00	0.00	10,601.7	1,299.3	81.5	1,301.8	0.00	0.00	
10,800.0	0.00	0.00	10,701.7	1,299.3	81.5	1,301.8	0.00	0.00	
10,900.0	0.00	0.00	10,801.7	1,299.3	81.5	1,301.8	0.00	0.00	
11,000.0	0.00	0.00	10,901.7	1,299.3	81.5	1,301.8	0.00	0.00	
11,100.0	0.00	0.00	11,001.7	1,299.3	81.5	1,301.8	0.00	0.00	
11,200.0	0.00	0.00	11,101.7	1,299.3	81.5	1,301.8	0.00	0.00	
11,300.0	0.00	0.00	11,201.7	1,299.3	81.5	1,301.8	0.00	0.00	
11,400.0	0.00	0.00	11,301.7	1,299.3	81.5	1,301.8	0.00	0.00	
11,409.3	0.00	0.00	11,311.0	1,299.3	81.5	1,301.8	0.00	0.00	Cameo
11,500.0	0.00	0.00	11,401.7	1,299.3	81.5	1,301.8	0.00	0.00	
11,600.0	0.00	0.00	11,501.7	1,299.3	81.5	1,301.8	0.00	0.00	
11,700.0	0.00	0.00	11,601.7	1,299.3	81.5	1,301.8	0.00	0.00	
11,759.3	0.00	0.00	11,661.0	1,299.3	81.5	1,301.8	0.00	0.00	Rollins SS
11,800.0	0.00	0.00	11,701.7	1,299.3	81.5	1,301.8	0.00	0.00	
11,900.0	0.00	0.00	11,801.7	1,299.3	81.5	1,301.8	0.00	0.00	
11,909.3	0.00	0.00	11,811.0	1,299.3	81.5	1,301.8	0.00	0.00	TD at 11909.3 - P32 595 OM09B BHL

Targets									
Target Name	Dip Angle (°)	Dip Dir. (°)	TVD (ft)	+N/-S (ft)	+E/-W (ft)	Northing (ft)	Easting (ft)	Latitude	Longitude
P32 595 OM09B BHL	0.00	0.00	11,811.0	1,299.3	81.5	1,642,459.14	2,275,630.12	39.569200	-108.069894
- hit/miss target									
- Shape									
- plan hits target center									
- Rectangle (sides W100.0 H200.0 D0.0)									

# Cathedral Energy Services

## Planning Report

<b>Database:</b>	EDM 2003.21 US Multi Users DB	<b>Local Co-ordinate Reference:</b>	Well OM09B P32 595
<b>Company:</b>	Berry Petroleum Company (NAD 83)	<b>TVD Reference:</b>	KB OM09B P32 @ 8386.0ft (Rig Name)
<b>Project:</b>	Garfield County	<b>MD Reference:</b>	KB OM09B P32 @ 8386.0ft (Rig Name)
<b>Site:</b>	P32 595	<b>North Reference:</b>	True
<b>Well:</b>	OM09B P32 595	<b>Survey Calculation Method:</b>	Minimum Curvature
<b>Wellbore:</b>	DD		
<b>Design:</b>	Plan #1		

Formations						
Measured Depth (ft)	Vertical Depth (ft)	Name	Lithology	Dip (°)	Dip Direction (°)	
5,044.4	4,991.0	Wasatch				
7,007.5	6,931.0	Fort Union				
7,513.4	7,431.0	Base Fort Union				
8,758.0	8,661.0	Ohio Creek				
8,959.1	8,861.0	Williams Fork				
9,159.3	9,061.0	Top of Gas				
11,409.3	11,311.0	Cameo				
11,759.3	11,661.0	Rollins SS				

Plan Annotations				
Measured Depth (ft)	Vertical Depth (ft)	Local Coordinates		Comment
		+N/-S (ft)	+E/-W (ft)	
200.0	200.0	0.0	0.0	KOP @ 200'
639.4	637.7	33.6	2.1	EOB; Inc=8.79°
8,719.9	8,623.3	1,265.7	79.4	Start Drop -2.00
9,159.3	9,061.0	1,299.3	81.5	EOD; Inc=0°
11,909.3	11,811.0	1,299.3	81.5	TD at 11909.3

# Cathedral Energy Services

## Anticollision Report

<b>Company:</b>	Berry Petroleum Company (NAD 83)	<b>Local Co-ordinate Reference:</b>	Well OM09B P32 595
<b>Project:</b>	Garfield County	<b>TVD Reference:</b>	KB OM09B P32 @ 8386.0ft (Rig Name)
<b>Reference Site:</b>	P32 595	<b>MD Reference:</b>	KB OM09B P32 @ 8386.0ft (Rig Name)
<b>Site Error:</b>	0.0ft	<b>North Reference:</b>	True
<b>Reference Well:</b>	OM09B P32 595	<b>Survey Calculation Method:</b>	Minimum Curvature
<b>Well Error:</b>	0.0ft	<b>Output errors are at</b>	2.00 sigma
<b>Reference Wellbore</b>	DD	<b>Database:</b>	EDM 2003.21 US Multi Users DB
<b>Reference Design:</b>	Plan #1	<b>Offset TVD Reference:</b>	Offset Datum

Reference	Plan #1		
Filter type:	NO GLOBAL FILTER: Using user defined selection & filtering criteria		
Interpolation Method:	MD Interval 100.0ft	Error Model:	Systematic Ellipse
Depth Range:	Unlimited	Scan Method:	Closest Approach 3D
Results Limited by:	Maximum center-center distance of 100.0ft	Error Surface:	Elliptical Conic
Warning Levels Evaluated at:	2.00 Sigma		

Survey Tool Program		Date	2/24/2009		
From (ft)	To (ft)	Survey (Wellbore)	Tool Name	Description	
0.0	11,909.3	Plan #1 (DD)	MWD	Geolink MWD	

<b>Summary</b>						
<b>Site Name</b>	<b>Reference Measured Depth (ft)</b>	<b>Offset Measured Depth (ft)</b>	<b>Distance Between Centres (ft)</b>	<b>Distance Between Ellipses (ft)</b>	<b>Separation Factor</b>	<b>Warning</b>
<b>Offset Well - Wellbore - Design</b>						
(Sec 8-6S-R96 SWNW original)						
Chevron #22-8D - ST 100' N - Plan #1						Out of range
Chevron #22-8D - ST 300' N - Plan #1						Out of range
(Sec 8-6S-R96 SWNW)						
Chevron #22-8D - ST 100' N - Plan #1						Out of range
<b>P32 595</b>						
OM01A P32 595 - DD - Plan #1						Out of range
OM09C P32 595 - DD - Plan #1	200.0	200.0	14.9	14.3	24.874	CC, ES
OM09C P32 595 - DD - Plan #1	2,300.0	2,300.3	97.6	87.9	10.115	SF
OM09D P32 595 - DD - Plan #1	200.0	200.0	29.1	28.5	48.542	CC, ES
OM09D P32 595 - DD - Plan #1	1,300.0	1,300.4	96.6	92.0	20.724	SF
OM13B P32 595 - DD - Plan #1	200.0	200.0	74.7	74.1	124.392	CC, ES
OM13B P32 595 - DD - Plan #1	500.0	497.7	93.8	92.1	55.396	SF
OM16A P32 595 - DD - Plan #1	200.0	200.0	44.4	43.8	74.021	CC, ES
OM16A P32 595 - DD - Plan #1	900.0	902.5	93.7	90.7	30.743	SF
OM16B P32 595 - DD - Plan #1	200.0	200.0	59.7	59.1	99.500	CC, ES
OM16B P32 595 - DD - Plan #1	700.0	702.0	95.8	93.5	40.861	SF
OM16D P32 595 - DD - Plan #1	200.0	200.0	90.0	89.4	149.869	CC, ES
OM16D P32 595 - DD - Plan #1	400.0	399.8	96.9	95.6	74.757	SF
<b>Sec29 T5S R96W</b>						
Latham 29-18D - DD - Plan #1						Out of range
Latham 29-19D - DD - Plan #1						Out of range
Latham 29-30D - DD - Plan #1						Out of range

# Cathedral Energy Services

## Anticollision Report

<b>Company:</b>	Berry Petroleum Company (NAD 83)	<b>Local Co-ordinate Reference:</b>	Well OM09B P32 595
<b>Project:</b>	Garfield County	<b>TVD Reference:</b>	KB OM09B P32 @ 8386.0ft (Rig Name)
<b>Reference Site:</b>	P32 595	<b>MD Reference:</b>	KB OM09B P32 @ 8386.0ft (Rig Name)
<b>Site Error:</b>	0.0ft	<b>North Reference:</b>	True
<b>Reference Well:</b>	OM09B P32 595	<b>Survey Calculation Method:</b>	Minimum Curvature
<b>Well Error:</b>	0.0ft	<b>Output errors are at</b>	2.00 sigma
<b>Reference Wellbore</b>	DD	<b>Database:</b>	EDM 2003.21 US Multi Users DB
<b>Reference Design:</b>	Plan #1	<b>Offset TVD Reference:</b>	Offset Datum

Offset Design P32 595 - OM09C P32 595 - DD - Plan #1													Offset Site Error:	0.0 ft
Survey Program: 0-MWD													Offset Well Error:	0.0 ft
Reference		Offset		Semi Major Axis			Distance				Total	Separation	Warning	
Measured Depth (ft)	Vertical Depth (ft)	Measured Depth (ft)	Vertical Depth (ft)	Reference (ft)	Offset (ft)	Highside Toolface (°)	Offset Wellbore Centre +N/-S (ft)	+E/-W (ft)	Between Centres (ft)	Between Ellipses (ft)	Uncertainty Axis	Factor		
0.0	0.0	0.0	0.0	0.0	0.0	-180.00	-14.9	0.0	14.9					
100.0	100.0	100.0	100.0	0.1	0.1	-180.00	-14.9	0.0	14.9	14.7	0.25	59.421		
200.0	200.0	200.0	200.0	0.3	0.3	-180.00	-14.9	0.0	14.9	14.3	0.60	24.874 CC, ES		
300.0	300.0	300.3	300.3	0.5	0.5	177.06	-14.5	-0.1	16.2	15.3	0.95	17.107		
400.0	399.8	400.8	400.8	0.7	0.7	179.92	-11.0	-0.7	18.0	16.7	1.30	13.890		
500.0	499.5	501.4	501.1	0.9	0.9	-175.44	-4.1	-1.8	20.0	18.3	1.65	12.111		
600.0	598.7	602.0	601.1	1.2	1.1	-169.62	6.4	-3.6	22.3	20.3	2.02	11.036		
700.0	697.6	701.9	700.3	1.5	1.4	-165.02	18.2	-5.6	26.2	23.7	2.41	10.865		
800.0	796.4	801.8	799.5	1.8	1.6	-161.79	30.0	-7.6	30.4	27.6	2.82	10.802		
900.0	895.2	901.7	898.7	2.1	1.9	-159.36	41.8	-9.6	34.8	31.5	3.24	10.731		
1,000.0	994.0	1,001.6	997.9	2.4	2.1	-157.47	53.6	-11.7	39.1	35.5	3.67	10.660		
1,100.0	1,092.9	1,101.5	1,097.0	2.7	2.4	-155.97	65.4	-13.7	43.6	39.5	4.11	10.591		
1,200.0	1,191.7	1,201.4	1,196.2	3.0	2.7	-154.74	77.2	-15.7	48.0	43.5	4.56	10.527		
1,300.0	1,290.5	1,301.3	1,295.4	3.3	2.9	-153.72	89.0	-17.7	52.5	47.5	5.01	10.469		
1,400.0	1,389.3	1,401.2	1,394.6	3.6	3.2	-152.86	100.8	-19.7	57.0	51.5	5.47	10.416		
1,500.0	1,488.2	1,501.1	1,493.7	4.0	3.5	-152.13	112.6	-21.7	61.5	55.5	5.93	10.369		
1,600.0	1,587.0	1,601.0	1,592.9	4.3	3.8	-151.49	124.5	-23.7	66.0	59.6	6.39	10.325		
1,700.0	1,685.8	1,700.9	1,692.1	4.6	4.0	-150.94	136.3	-25.7	70.5	63.6	6.85	10.286		
1,800.0	1,784.7	1,800.8	1,791.3	4.9	4.3	-150.45	148.1	-27.7	75.0	67.7	7.31	10.251		
1,900.0	1,883.5	1,900.7	1,890.4	5.2	4.6	-150.02	159.9	-29.7	79.5	71.7	7.78	10.219		
2,000.0	1,982.3	2,000.6	1,989.6	5.5	4.8	-149.64	171.7	-31.7	84.0	75.8	8.24	10.189		
2,100.0	2,081.1	2,100.5	2,088.8	5.9	5.1	-149.29	183.5	-33.7	88.5	79.8	8.71	10.162		
2,200.0	2,180.0	2,200.4	2,188.0	6.2	5.4	-148.98	195.3	-35.8	93.1	83.9	9.18	10.137		
2,300.0	2,278.8	2,300.3	2,287.1	6.5	5.7	-148.70	207.1	-37.8	97.6	87.9	9.65	10.115 SF		



# Cathedral Energy Services

## Anticollision Report

<b>Company:</b>	Berry Petroleum Company (NAD 83)	<b>Local Co-ordinate Reference:</b>	Well OM09B P32 595
<b>Project:</b>	Garfield County	<b>TVD Reference:</b>	KB OM09B P32 @ 8386.0ft (Rig Name)
<b>Reference Site:</b>	P32 595	<b>MD Reference:</b>	KB OM09B P32 @ 8386.0ft (Rig Name)
<b>Site Error:</b>	0.0ft	<b>North Reference:</b>	True
<b>Reference Well:</b>	OM09B P32 595	<b>Survey Calculation Method:</b>	Minimum Curvature
<b>Well Error:</b>	0.0ft	<b>Output errors are at</b>	2.00 sigma
<b>Reference Wellbore</b>	DD	<b>Database:</b>	EDM 2003.21 US Multi Users DB
<b>Reference Design:</b>	Plan #1	<b>Offset TVD Reference:</b>	Offset Datum

Offset Design													P32 595 - OM09D P32 595 - DD - Plan #1		Offset Site Error:		0.0 ft
Survey Program:													0-MWD		Offset Well Error:		0.0 ft
Reference		Offset		Semi Major Axis			Distance										
Measured Depth	Vertical Depth	Measured Depth	Vertical Depth	Reference	Offset	Highside Toolface	Offset Wellbore Centre		Between Centres	Between Ellipses	Total Uncertainty Axis	Separation Factor	Warning				
(ft)	(ft)	(ft)	(ft)	(ft)	(ft)	(°)	+N/-S (ft)	+E/-W (ft)	(ft)	(ft)							
0.0	0.0	0.0	0.0	0.0	0.0	180.00	-29.1	0.0	29.1								
100.0	100.0	100.0	100.0	0.1	0.1	180.00	-29.1	0.0	29.1	28.9	0.25	115.961					
200.0	200.0	200.0	200.0	0.3	0.3	180.00	-29.1	0.0	29.1	28.5	0.60	48.542	CC, ES				
300.0	300.0	300.0	300.0	0.5	0.5	176.61	-29.1	0.0	30.9	29.9	0.95	32.543					
400.0	399.8	401.0	401.0	0.7	0.7	178.01	-27.4	-0.5	34.4	33.1	1.30	26.511					
500.0	499.5	502.1	502.0	0.9	0.8	-178.97	-22.3	-2.1	38.2	36.5	1.65	23.146					
600.0	598.7	602.5	602.0	1.2	1.1	-175.16	-14.4	-4.5	42.8	40.8	2.01	21.356					
700.0	697.6	702.2	701.4	1.5	1.3	-172.39	-6.2	-7.0	50.1	47.8	2.37	21.164					
800.0	796.4	801.9	800.7	1.8	1.5	-170.37	1.9	-9.5	57.8	55.1	2.74	21.086					
900.0	895.2	901.6	900.0	2.1	1.7	-168.83	10.1	-12.0	65.5	62.4	3.12	21.008					
1,000.0	994.0	1,001.3	999.3	2.4	1.9	-167.61	18.3	-14.6	73.3	69.8	3.50	20.931					
1,100.0	1,092.9	1,101.0	1,098.6	2.7	2.2	-166.63	26.5	-17.1	81.0	77.2	3.89	20.858					
1,200.0	1,191.7	1,200.7	1,198.0	3.0	2.4	-165.82	34.7	-19.6	88.8	84.6	4.27	20.789					
1,300.0	1,290.5	1,300.4	1,297.3	3.3	2.6	-165.14	42.8	-22.1	96.6	92.0	4.66	20.724	SF				

# Cathedral Energy Services

## Anticollision Report

<b>Company:</b>	Berry Petroleum Company (NAD 83)	<b>Local Co-ordinate Reference:</b>	Well OM09B P32 595
<b>Project:</b>	Garfield County	<b>TVD Reference:</b>	KB OM09B P32 @ 8386.0ft (Rig Name)
<b>Reference Site:</b>	P32 595	<b>MD Reference:</b>	KB OM09B P32 @ 8386.0ft (Rig Name)
<b>Site Error:</b>	0.0ft	<b>North Reference:</b>	True
<b>Reference Well:</b>	OM09B P32 595	<b>Survey Calculation Method:</b>	Minimum Curvature
<b>Well Error:</b>	0.0ft	<b>Output errors are at</b>	2.00 sigma
<b>Reference Wellbore</b>	DD	<b>Database:</b>	EDM 2003.21 US Multi Users DB
<b>Reference Design:</b>	Plan #1	<b>Offset TVD Reference:</b>	Offset Datum

<b>Offset Design</b> P32 595 - OM13B P32 595 - DD - Plan #1													<b>Offset Site Error:</b>	0.0 ft
Survey Program: 0-MWD													<b>Offset Well Error:</b>	0.0 ft
Reference		Offset		Semi Major Axis			Distance					Separation Factor	Warning	
Measured Depth (ft)	Vertical Depth (ft)	Measured Depth (ft)	Vertical Depth (ft)	Reference (ft)	Offset (ft)	Highside Toolface (°)	Offset Wellbore Centre +N/-S (ft)	+E/-W (ft)	Between Centres (ft)	Between Ellipses (ft)	Total Uncertainty Axis			
0.0	0.0	0.0	0.0	0.0	0.0	178.92	-74.7	1.4	74.7					
100.0	100.0	100.0	100.0	0.1	0.1	178.92	-74.7	1.4	74.7	74.4	0.25	297.158		
200.0	200.0	200.0	200.0	0.3	0.3	178.92	-74.7	1.4	74.7	74.1	0.60	124.392 CC, ES		
300.0	300.0	299.4	299.4	0.5	0.5	174.17	-75.0	3.1	76.8	75.8	0.95	80.643		
400.0	399.8	398.5	398.3	0.7	0.7	171.03	-75.8	8.2	83.2	81.8	1.32	63.044		
500.0	499.5	497.7	497.3	0.9	0.9	167.60	-77.0	15.2	93.8	92.1	1.69	55.396 SF		

# Cathedral Energy Services

## Anticollision Report

<b>Company:</b>	Berry Petroleum Company (NAD 83)	<b>Local Co-ordinate Reference:</b>	Well OM09B P32 595
<b>Project:</b>	Garfield County	<b>TVD Reference:</b>	KB OM09B P32 @ 8386.0ft (Rig Name)
<b>Reference Site:</b>	P32 595	<b>MD Reference:</b>	KB OM09B P32 @ 8386.0ft (Rig Name)
<b>Site Error:</b>	0.0ft	<b>North Reference:</b>	True
<b>Reference Well:</b>	OM09B P32 595	<b>Survey Calculation Method:</b>	Minimum Curvature
<b>Well Error:</b>	0.0ft	<b>Output errors are at</b>	2.00 sigma
<b>Reference Wellbore</b>	DD	<b>Database:</b>	EDM 2003.21 US Multi Users DB
<b>Reference Design:</b>	Plan #1	<b>Offset TVD Reference:</b>	Offset Datum

Offset Design													P32 595 - OM16A P32 595 - DD - Plan #1		Offset Site Error:		0.0 ft	
Survey Program: 0-MWD															Offset Well Error:		0.0 ft	
Reference		Offset		Semi Major Axis		Distance												
Measured Depth (ft)	Vertical Depth (ft)	Measured Depth (ft)	Vertical Depth (ft)	Reference (ft)	Offset (ft)	Highside Toolface (°)	Offset Wellbore Centre +N/-S (ft)	+E/-W (ft)	Between Centres (ft)	Between Ellipses (ft)	Total Uncertainty Axis	Separation Factor	Warning					
0.0	0.0	0.0	0.0	0.0	0.0	179.27	-44.4	0.6	44.4									
100.0	100.0	100.0	100.0	0.1	0.1	179.27	-44.4	0.6	44.4	44.2	0.25	176.828						
200.0	200.0	200.0	200.0	0.3	0.3	179.27	-44.4	0.6	44.4	43.8	0.60	74.021	CC, ES					
300.0	300.0	300.0	300.0	0.5	0.5	175.85	-44.4	0.6	46.2	45.2	0.95	48.659						
400.0	399.8	400.3	400.3	0.7	0.6	176.20	-44.2	0.6	51.2	49.9	1.30	39.454						
500.0	499.5	501.0	500.9	0.9	0.8	176.35	-42.5	1.0	58.2	56.5	1.65	35.363						
600.0	598.7	601.6	601.6	1.2	1.0	176.28	-39.1	1.9	67.0	65.0	1.99	33.607						
700.0	697.6	702.4	702.2	1.5	1.2	176.06	-33.9	3.1	76.9	74.5	2.34	32.810						
800.0	796.4	802.8	802.4	1.8	1.4	175.64	-27.2	4.8	85.5	82.8	2.70	31.698						
900.0	895.2	902.5	901.8	2.1	1.6	175.24	-20.2	6.5	93.7	90.7	3.05	30.743	SF					

# Cathedral Energy Services

## Anticollision Report

<b>Company:</b>	Berry Petroleum Company (NAD 83)	<b>Local Co-ordinate Reference:</b>	Well OM09B P32 595
<b>Project:</b>	Garfield County	<b>TVD Reference:</b>	KB OM09B P32 @ 8386.0ft (Rig Name)
<b>Reference Site:</b>	P32 595	<b>MD Reference:</b>	KB OM09B P32 @ 8386.0ft (Rig Name)
<b>Site Error:</b>	0.0ft	<b>North Reference:</b>	True
<b>Reference Well:</b>	OM09B P32 595	<b>Survey Calculation Method:</b>	Minimum Curvature
<b>Well Error:</b>	0.0ft	<b>Output errors are at</b>	2.00 sigma
<b>Reference Wellbore</b>	DD	<b>Database:</b>	EDM 2003.21 US Multi Users DB
<b>Reference Design:</b>	Plan #1	<b>Offset TVD Reference:</b>	Offset Datum

Offset Design													P32 595 - OM16B P32 595 - DD - Plan #1		Offset Site Error:		0.0 ft
Survey Program: 0-MWD													Offset Well Error:		0.0 ft		
Reference		Offset		Semi Major Axis			Distance							Warning			
Measured Depth	Vertical Depth	Measured Depth	Vertical Depth	Reference	Offset	Highside Toolface	Offset Wellbore Centre		Between Centres	Between Ellipses	Total Uncertainty Axis	Separation Factor					
(ft)	(ft)	(ft)	(ft)	(ft)	(ft)	(°)	+N/-S (ft)	+E/-W (ft)	(ft)	(ft)							
0.0	0.0	0.0	0.0	0.0	0.0	179.46	-59.7	0.6	59.7								
100.0	100.0	100.0	100.0	0.1	0.1	179.46	-59.7	0.6	59.7	59.5	0.25	237.695					
200.0	200.0	200.0	200.0	0.3	0.3	179.46	-59.7	0.6	59.7	59.1	0.60	99.500 CC, ES					
300.0	300.0	300.0	300.0	0.5	0.5	175.99	-59.7	0.6	61.5	60.5	0.95	64.777					
400.0	399.8	399.8	399.8	0.7	0.6	176.29	-59.7	0.6	66.7	65.4	1.30	51.440					
500.0	499.5	500.6	500.6	0.9	0.8	176.37	-59.0	1.0	74.6	73.0	1.64	45.386					
600.0	598.7	601.3	601.2	1.2	1.0	175.97	-56.7	2.4	84.6	82.6	1.99	42.444					
700.0	697.6	702.0	701.9	1.5	1.2	175.24	-52.9	4.6	95.8	93.5	2.34	40.861 SF					

# Cathedral Energy Services

## Anticollision Report

<b>Company:</b>	Berry Petroleum Company (NAD 83)	<b>Local Co-ordinate Reference:</b>	Well OM09B P32 595
<b>Project:</b>	Garfield County	<b>TVD Reference:</b>	KB OM09B P32 @ 8386.0ft (Rig Name)
<b>Reference Site:</b>	P32 595	<b>MD Reference:</b>	KB OM09B P32 @ 8386.0ft (Rig Name)
<b>Site Error:</b>	0.0ft	<b>North Reference:</b>	True
<b>Reference Well:</b>	OM09B P32 595	<b>Survey Calculation Method:</b>	Minimum Curvature
<b>Well Error:</b>	0.0ft	<b>Output errors are at</b>	2.00 sigma
<b>Reference Wellbore</b>	DD	<b>Database:</b>	EDM 2003.21 US Multi Users DB
<b>Reference Design:</b>	Plan #1	<b>Offset TVD Reference:</b>	Offset Datum

<b>Offset Design</b> P32 595 - OM16D P32 595 - DD - Plan #1													<b>Offset Site Error:</b>	0.0 ft
Survey Program: 0-MWD													<b>Offset Well Error:</b>	0.0 ft
Reference		Offset		Semi Major Axis			Distance							
Measured Depth (ft)	Vertical Depth (ft)	Measured Depth (ft)	Vertical Depth (ft)	Reference (ft)	Offset (ft)	Highside Toolface (°)	Offset Wellbore Centre +N/-S (ft)	+E/-W (ft)	Between Centres (ft)	Between Ellipses (ft)	Total Uncertainty Axis	Separation Factor	Warning	
0.0	0.0	0.0	0.0	0.0	0.0	179.10	-90.0	1.4	90.0					
100.0	100.0	100.0	100.0	0.1	0.1	179.10	-90.0	1.4	90.0	89.7	0.25	358.020		
200.0	200.0	200.0	200.0	0.3	0.3	179.10	-90.0	1.4	90.0	89.4	0.60	149.869 CC, ES		
300.0	300.0	300.0	300.0	0.5	0.5	175.60	-90.0	1.4	91.7	90.8	0.95	96.638		
400.0	399.8	399.8	399.8	0.7	0.6	175.83	-90.0	1.4	96.9	95.6	1.30	74.757 SF		

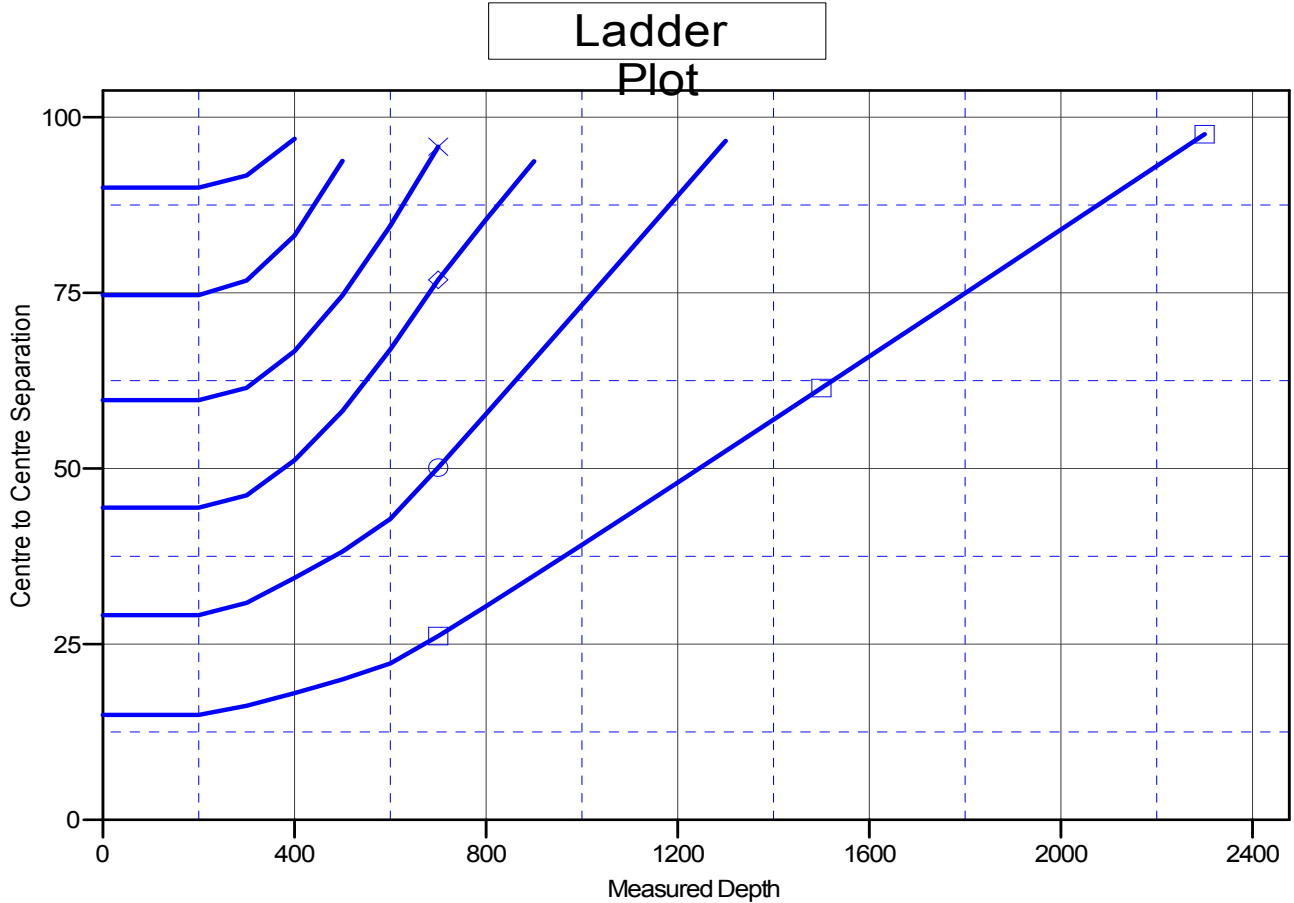
# Cathedral Energy Services

## Anticollision Report

<b>Company:</b>	Berry Petroleum Company (NAD 83)	<b>Local Co-ordinate Reference:</b>	Well OM09B P32 595
<b>Project:</b>	Garfield County	<b>TVD Reference:</b>	KB OM09B P32 @ 8386.0ft (Rig Name)
<b>Reference Site:</b>	P32 595	<b>MD Reference:</b>	KB OM09B P32 @ 8386.0ft (Rig Name)
<b>Site Error:</b>	0.0ft	<b>North Reference:</b>	True
<b>Reference Well:</b>	OM09B P32 595	<b>Survey Calculation Method:</b>	Minimum Curvature
<b>Well Error:</b>	0.0ft	<b>Output errors are at</b>	2.00 sigma
<b>Reference Wellbore</b>	DD	<b>Database:</b>	EDM 2003.21 US Multi Users DB
<b>Reference Design:</b>	Plan #1	<b>Offset TVD Reference:</b>	Offset Datum

Reference Depths are relative to KB OM09B P32 @ 8386.0ft (Rig Nam  
Offset Depths are relative to Offset Datum  
Central Meridian is -105.500000 °

Coordinates are relative to: OM09B P32 595  
Coordinate System is US State Plane 1983, Colorado Central Zone  
Grid Convergence at Surface is: -1.62°



### LEGEND

- OM13B P32 595, DD, Plan #1 V0
- OM09C P32 595, DD, Plan #1 V0
- OM09D P32 595, DD, Plan #1 V0
- OM16D P32 595, DD, Plan #1 V0
- OM16B P32 595, DD, Plan #1 V0
- OM16A P32 595, DD, Plan #1 V0