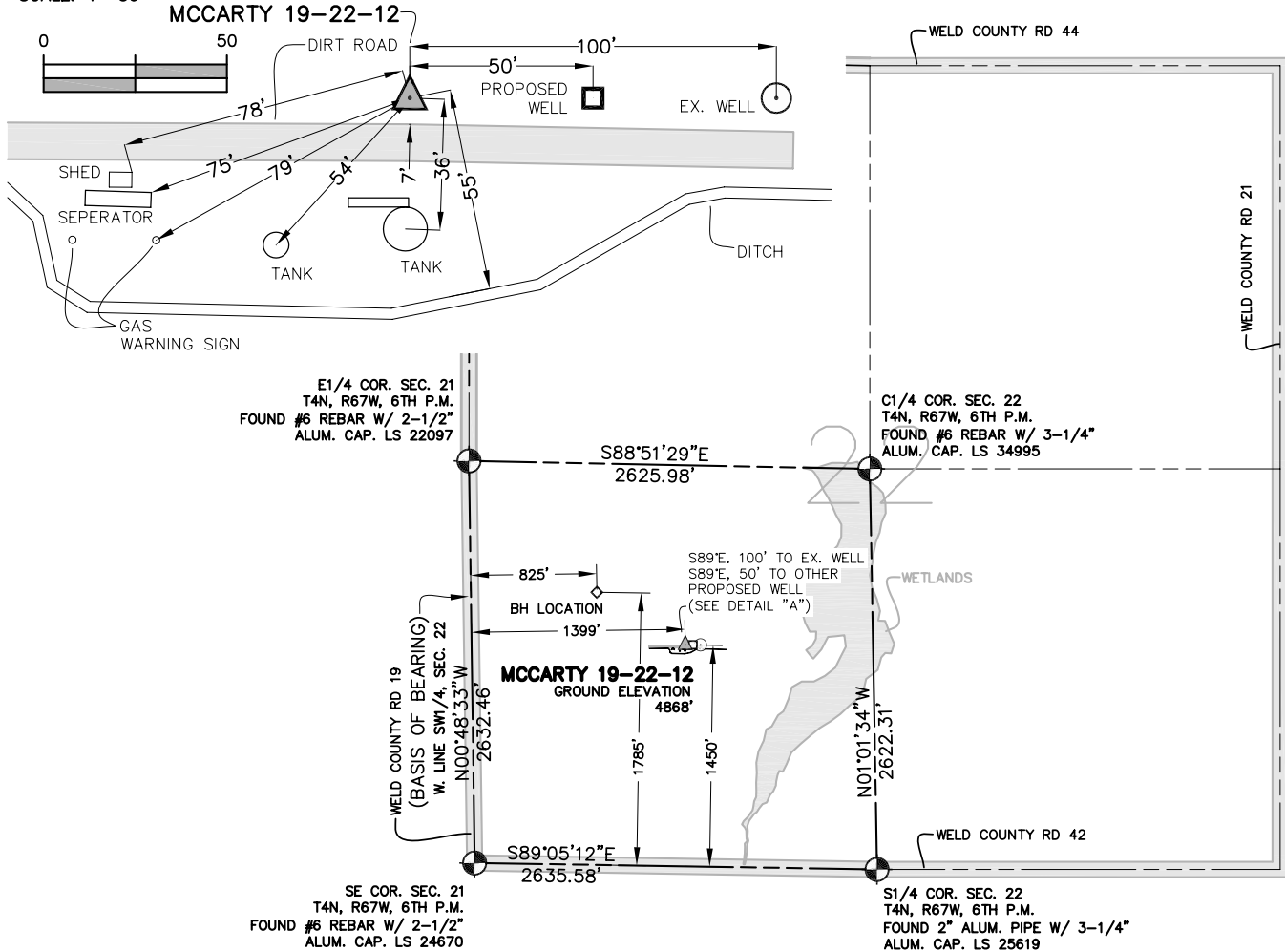


# WELL LOCATION CERTIFICATE

THIS MAP IS A GIS EXHIBIT AND DOES NOT REPRESENT A BOUNDARY SURVEY.

**DETAIL "A"**  
SCALE: 1"=50'



**EXHIBIT MAP**

SCALE: 1"=1000'



## WELL LOCATION CERTIFICATE

IN ACCORDANCE WITH A REQUEST FROM SHERRY GLASS OF KP KAUFFMAN INC., CIVIL ARTS-DREXEL GROUP, INC. HAS DETERMINED THE LOCATION OF MCCARTY 19-22-12 WELL SITE TO BE 1399' FWL AND 1450' FSL AS MEASURED AT NINETY (90) DEGREES FROM THE SECTION LINES OF SECTION 22, T4N, R67W, OF THE 6TH P.M., WELD COUNTY, CO.

## LEGEND

- = FOUND SURVEY MONUMENT
- = ROAD
- (C) = CALCULATED DIMENSION
- ▲ = PROPOSED WELL LOCATION
- ◇ = BOTTOM OF HOLE LOCATION
- = OTHER PROPOSED WELL LOCATION
- = EXISTING WELL LOCATION

## NOTES

1. BEARINGS SHOWN ON THIS MAP ARE BASED UPON GPS OBSERVATIONS MADE ON 02/23/2007 BY KIPPER GOLDSBERRY BETWEEN THE SOUTHWEST CORNER AND THE W1/4 CORNER OF SECTION 22, T4N, R67W, OF THE 6TH P.M., HAVING A BEARING OF N00°48'33"W, AS MONUMENTED AND SHOWN HEREON.
2. ELEVATIONS ARE BASED UPON NAVD 88 DATUM.
3. SEE DETAIL "A" FOR IMPROVEMENTS NEAR THE PROPOSED LOCATION.
4. WETLAND LOCATION HERE IS BASED UPON PINFLAGS SET BY TIGLAS ECOLOGICAL SERVICES ON 05/17/07.

## PROPOSED SURFACE HOLE DATA

(NAD 83)  
LATITUDE: 40.29483 N  
LONGITUDE: 104.88129 W  
PDOP: <6

## NOTICE

ACCORDING TO COLORADO LAW YOU MUST COMMENCE ANY LEGAL ACTION BASED UPON ANY DEFECT IN THIS SURVEY WITHIN THREE YEARS AFTER YOU FIRST DISCOVERED SUCH DEFECT. IN NO EVENT MAY ANY ACTION BASED UPON ANY DEFECT IN THIS SURVEY BE COMMENCED MORE THAN TEN YEARS FROM THE DATE OF THE CERTIFICATION SHOWN HEREON.

Z:\597-1\Ldd-597-1\Dwg\597-1-Survey\MCCARTY 19-22-12\MCCARTY 19-22-12.DWG

I HEREBY CERTIFY THAT THIS WELL LOCATION CERTIFICATE WAS PREPARED UNDER MY RESPONSIBLE CHARGE ON 07/24/2007 FOR AND ON BEHALF OF KP KAUFFMAN, INC. THAT IT IS NOT A LAND SURVEY PLAT OR AN IMPROVEMENT SURVEY PLAT, AND THAT IT IS NOT TO BE RELIED UPON FOR ESTABLISHMENT OF FENCE, BUILDING, OR OTHER FUTURE IMPROVEMENT LINES.

SEE ORIGINAL SIGNED 07-30-07

PETER D. STEGER  
COLORADO REGISTERED PROFESSIONAL  
LAND SURVEYOR NO. 25379

DATE: \_\_\_\_\_



Engineering • Planning • Surveying

1860 Lefthand Circle, Suite A • Longmont, Colorado 80501 • (303) 682-1131