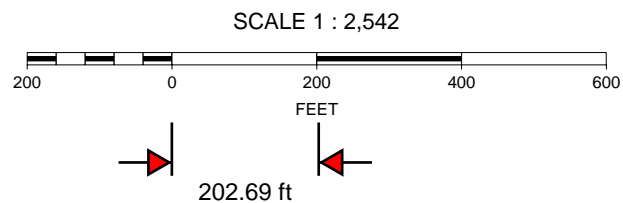
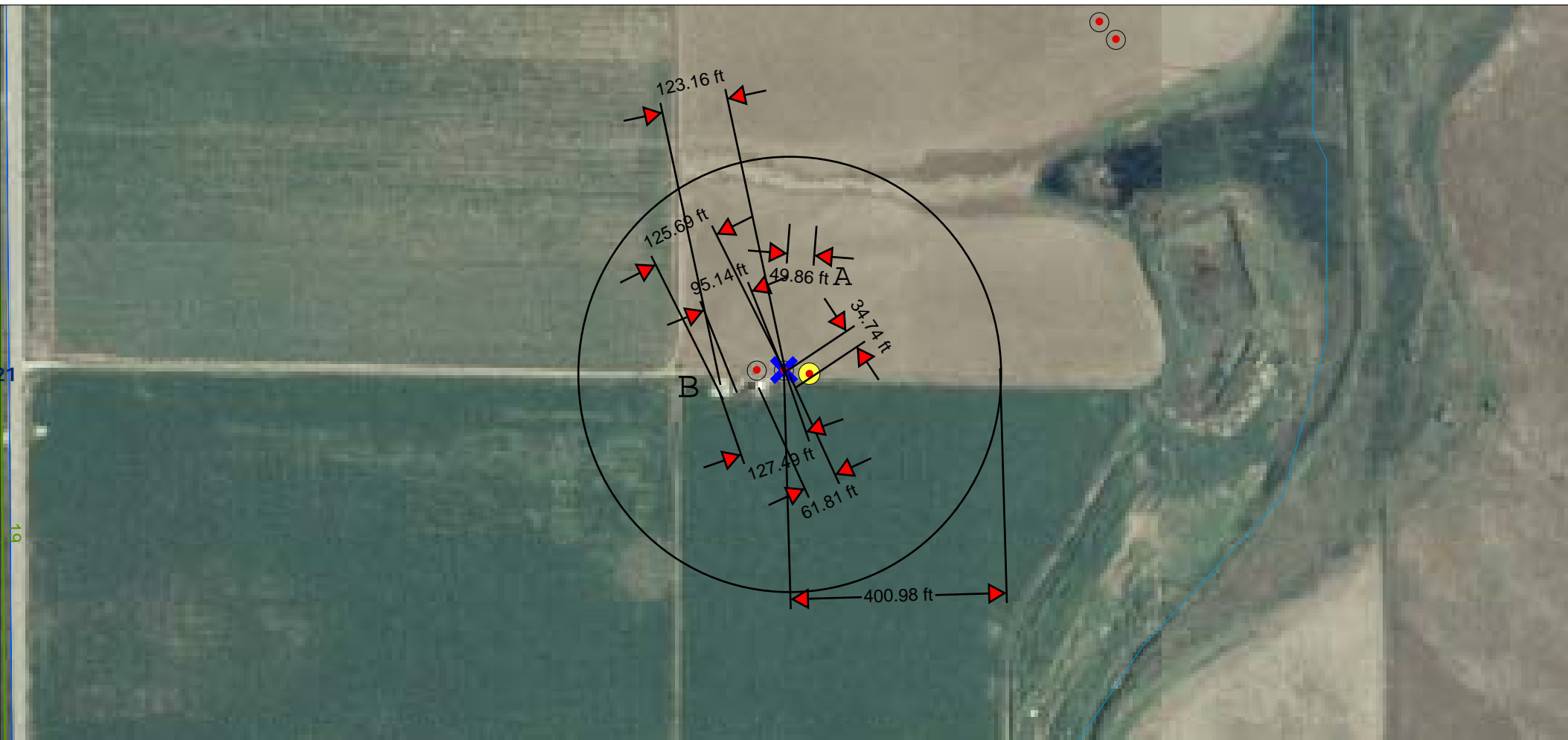


A. Existing well (McCarty #1; API# 05-123-10232) 50 ft; B. existing tank battery facilities (please see surveyor's plat):  
 dirt access road 8 ft.; irrigation ditch 35 ft.; oil tank 62 ft.; water tank 95 ft.; separator 123 ft.;  
 gas warning sign (pipeline) 125 ft.; shed 127 ft; two staked locations: McCarty #19-22-12, #19-22-13



K. P. Kauffman Company, Inc.

Well location map; visible improvements in 400'

McCarty #19-22 well pad

C-SW/4 section 22-T4N-R67W

Weld Co., Colorado

