

# Map Unit Description

Weld County, Colorado, Southern Part

78 Weld loam, 0 to 1 percent slopes

## Setting

Elevation: 4850 to 5000 feet  
Mean annual precipitation: 13 to 17 inches  
Mean annual air temperature: 46 to 55 degrees F  
Frost-free period: 100 to 155 days

## Composition

Weld and similar soils: 80 percent  
Minor components: 1 percent

## Description of Weld

### Setting

Landform: Plains  
Down-slope shape: Linear  
Across-slope shape: Linear  
Parent material: Eolian deposits

### Properties and Qualities

Slope: 0 to 1 percent  
Drainage class: Well drained  
Capacity of the most limiting layer to transmit water (Ksat): Moderately low or moderately high (0.06 to 0.20 in/hr)  
Frequency of flooding: None  
Frequency of ponding: None  
Calcium carbonate maximum: 6 percent  
Gypsum maximum: 0 percent  
Available water capacity: High (about 10.2 inches)

### Interpretive Groups

Land capability classification (irrigated): 2s  
Land capability (non irrigated): 3e  
Ecological site: Loamy Plains (R067BY002CO)

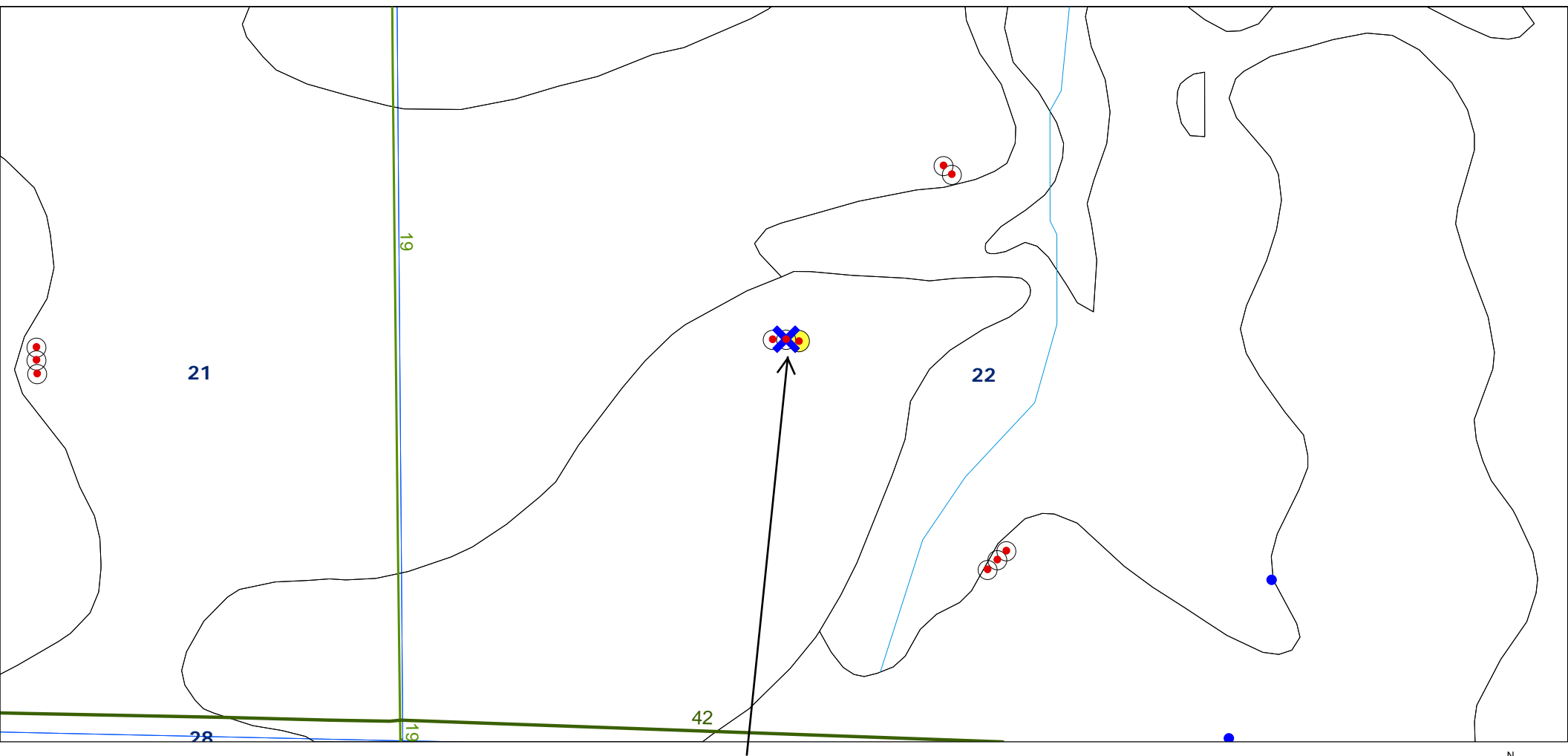
### Typical Profile

0 to 8 inches: loam  
8 to 15 inches: clay  
15 to 60 inches: silt loam  
60 to 64 inches: silt loam

## Minor Components

Aquic argiustolls  
Percent of map unit: 1 percent  
Landform: Swales

78, Weld loam, 0 to 1% slopes



SCALE 1 : 5,084

500 0 500 1,000 1,500  
FEET

K. P. Kauffman Company, Inc.

Soils map

McCarty #19-22 well pad

C-SW/4 section 22-T4N-R67W

Weld Co., Colorado

Monday, December 14, 2009 2:29 PM