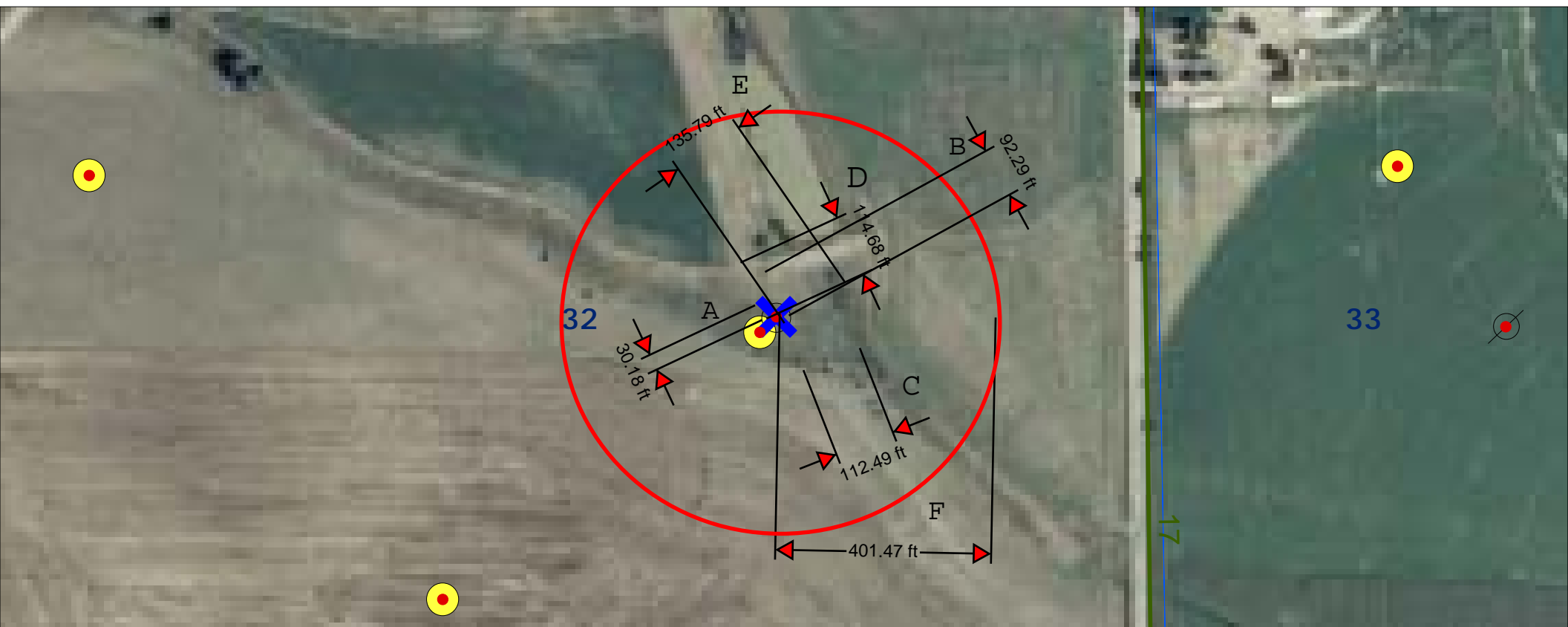
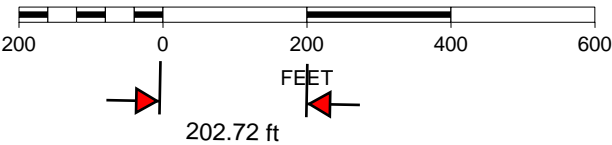


- A. 3' Ditch bearing N at 30 ft; B. Earthen dam bearing N at 92 ft; C. 30' Ditch bearing ENE at 112 ft;
D. Edge of irrigation pond bearing N at 115 ft; E. 8" CMP bearing NE at 136'; F. access road to well site

DETAILS ON ATTACHMENT A



SCALE 1 : 3,202



K. P. Kauffman Company, Inc.

Well location map; visible improvements in 400'

Camenisch #9-32-40R

NESE section 32-T4N-R67W

Weld Co., Colorado