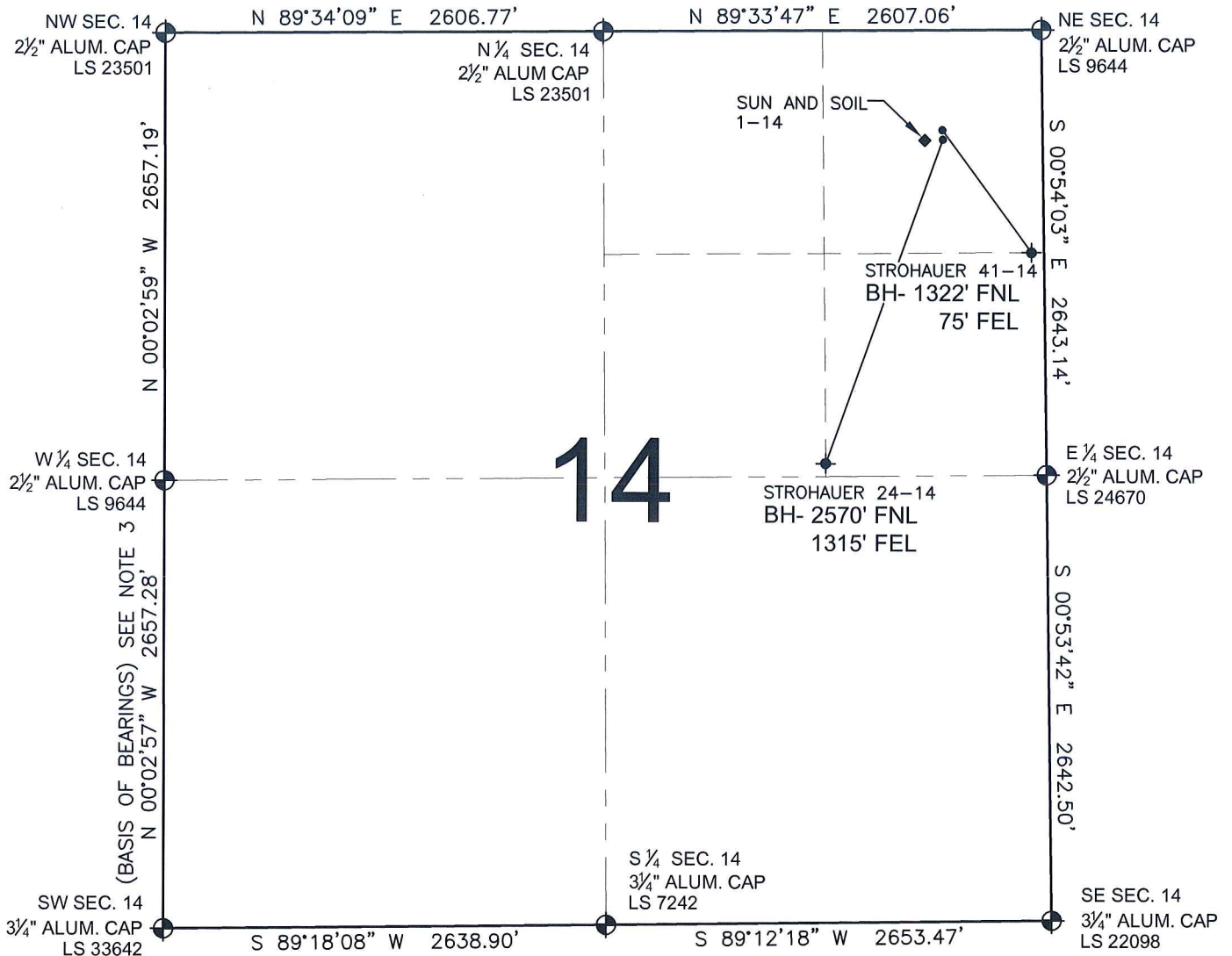


PAD DRAWING - STROHAUER 2 PAD

SECTION 14, TOWNSHIP 4 NORTH, RANGE 65 WEST, 6TH P.M.



LEGEND

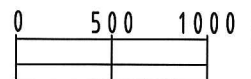
- = EXISTING MONUMENT
 = BOTTOM HOLE
 BH= BOTTOM HOLE
 = PROPOSED WELL
 = EXISTING WELL

NOTES:

- THIS SURVEY WAS DONE BY GPS METHODS AND CONFORMS TO THE MINIMUM STANDARDS SET BY THE C.O.G.C.C., RULE NO. 215
- ELEVATIONS SHOWN AT THE WELL HEAD, AS WELL AS HORIZONTAL CONTROL, ARE BASED ON GPS-RTK VALUES DERIVED FROM DOING 2-HOUR STATIC GPS SESSIONS AND REDUCTIONS USING O.P.U.S. SOLUTIONS.
VERTICAL = NAVD88; HORIZONTAL = NAD83/92
- THE BEARINGS SHOWN HEREON ARE BASED ON GPS OBSERVATIONS BETWEEN THE MONUMENTS SHOWN HEREON AS FOUND ON THE FIELD DATE BELOW.
- DISTANCES SHOWN ARE AT GROUND LEVEL, AS MEASURED IN THE FIELD, WITH TIES TO WELLS MEASURED AT A PERPENDICULAR TO SECTION LINES.

NOTES:

- STROHAUSER 41-14 TO BE AT 633' FNL, 595' FEL.
 BOTTOM HOLE AT 1322' FNL & 75' FEL.
 STROHAUSER 24-14 TO BE AT 649' FNL, 595' FEL.
 BOTTOM HOLE AT 2570' FNL & 1315' FEL.
 SUN AND SOIL 1-14 IS 649' FNL, 643' FEL.



SCALE: 1"=1000'

REVISIONS

INITIAL	DATE

PREPARED BY:

PFS

Petroleum Field Services, LLC
1801 W. 13th Ave.
Denver, CO 80204



KERR-MCGEE OIL & GAS ONSHORE LP

FIELD DATE:

04-12-10

DRAWING DATE:

04-13-10

BY:

SMF

PAD NAME:

STROHAUSER 2 PAD

SURFACE LOCATION:

WELD COUNTY, COLORADO

NE 1/4 NE 1/4, SEC. 14, T4N, R65W