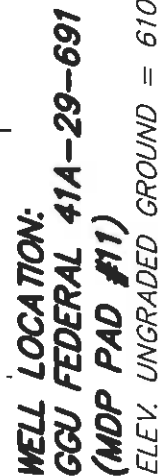


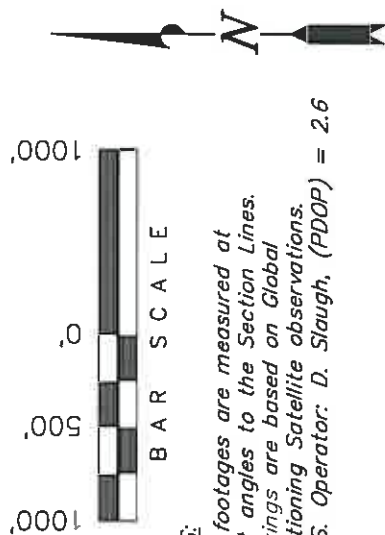
BILL BARRETT CORP.



Basis of elevation is the Rifle 2 Triangulation Station. 39°31'53.80" N Lat. & 107°47'07.78" W Long (NAD 83). Elevation = 5323.1' (NAVD88).

NAD 83 (SURFACE LOCATION)
LATITUDE = 39°30'09.89"
(39.502747)
LONGITUDE = 107°34'23.05"
(107.573070)

WELL LOCATION, GGU FEDERAL 41A-29-691 (MDP PAD #11), LOCATED AS SHOWN IN THE NE 1/4 NE 1/4 OF SECTION 29, T6S, R91W, 66th P.M. GARFIELD COUNTY, COLORADO.



NOTES:

1. Well footages are measured at right angles to the Section Lines.
2. Bearings are based on Global Positioning Satellite observations.
3. G.P.S. Operator: D. Slaugh, (PDOP) = 2.6

IMPROVEMENT: NOTE.

See addendum to legal plan, (sheet **2a**) for existing improvements within 400' of the proposed wetlands.

THIS IS TO CERTIFY THAT THE ABOVE PLAT WAS PREPARED FROM FIELD NOTES, ~~AND~~ SURVEYS MADE BY ME OR UNDER MY CLOSE PERSONAL SUPERVISION, AND THAT THE LOCATION HAS BEEN STAKED ON THE GROUND, AND A COPY OF THE FIELD NOTES AND STAKES ARE DEPOSITED HEREIN, AND THAT THE SAID WORK WAS CORRECTLY DONE.



REGISTERED PROFESSIONAL SURVEYOR
REGISTRATION OFFENSES: 30125
STATE OF CONNECTICUT

TRI STATE LAND SURVEYING & CONSULTING
180 NORTH VERNAL AVE. - VERNAL, UTAH 84078
(435) 781-2501

DATE SURVEYED: 01-05-10	SURVEYED BY: C.D.S	SHEET 2a OF 12
DATE DRAWN: 01-17-10	DRAWN BY: F.T.M	
REVISED.	SCALE: 1" = 1000'	

DRILLING PROGRAM

BILL BARRETT CORPORATION

GGU Federal 41A-29-691

NENE, 1236' FNL, 1279' FEL, Sec. 29, T6S-R91W (surface hole)

NENE, 1146' FNL, 664' FEL, Sec. 29, T6S-R91W (bottom hole)

Garfield County, Colorado

1 - 2. Estimated Tops of Geological Markers and Formations Expected to Contain Water, Oil and Gas and Other Minerals

Formation	Depth – MD	Depth – TVD
Mesaverde*	3534'	3497'
Price Coal	4346'	4297'
Top of Gas	4819'	4767'
Rollins*	7149'	7097'
TD	7449'	7397'

PROSPECTIVE PAY

*Members of the Williams Fork & Iles formations are primary objectives for oil/gas.

3. BOP and Pressure Containment Data

<u>Depth Intervals</u>	<u>BOP Equipment</u>
0 –740'	No pressure control required
740' – TD	11" 3000# Ram Type BOP 11" 3000# Annular BOP

- Drilling spool to accommodate choke and kill lines;
- Ancillary equipment and choke manifold rated at 3,000#. All BOP and BOPE tests will be in accordance with the requirements of onshore Order No. 2;
- The BLM and the Colorado Oil and Gas Conservation Commission will be notified 24 hours in advance of all BOP pressure tests.
- BOP hand wheels may be underneath the sub-structure of the rig if the drilling rig used is set up to operate most efficiently in this manner.

4. Casing Program

<u>Hole Size</u>	<u>SETTING DEPTH</u> <u>(FROM) (TO)</u>		<u>Casing Size</u>	<u>Casing Weight</u>	<u>Casing Grade</u>	<u>Thread</u>	<u>Condition</u>
12 ¼"	surface	740'	9 5/8"	36#	J or K 55	ST&C	New
7 7/8" & 8 3/4"	surface	7449'	4 ½"	11.6# 11.6#	P-110 or N-80	LT&C LT&C	New New

Note: BBC will use one of two options of production casing noted above. 7 7/8" hole size will begin at the point the bit is changed (approximately 5250').

5. Cementing Program

9 5/8" Surface Casing	Lead with approximately 120 sx Versacem Cement System with additives mixed at 12.3 ppg (yield = 2.35 ft ³ /sx) and tail with approximately 120 sx Swiftcem Cement System with additives mixed at 14.2 ppg (yield = 1.39 ft ³ /sx), circulated to surface with 75% excess
4 1/2" Production Casing	Cement with approximately 900 sx Halcem Cement System with additives mixed at 13.1 ppg (yield = 1.51 ft ³ /sx), circulated to surface with 15% excess
Note: Actual volumes to be calculated from caliper log.	

6. Mud Program

<u>Interval</u>	<u>Weight</u>	<u>Viscosity</u>	<u>Fluid Loss</u> (API filtrate)	<u>Remarks</u>
0 – 40'	8.4 – 9.3	29 – 48	--	Native Spud Mud
40' – 740'	8.4 – 9.3	29 – 48	12 ml or less	Freshwater drilling fluid system
740' – TD	9.2 – 9.9	36 – 56	8 ml or less	LSND/DAP
Note: Sufficient mud materials to maintain mud properties, control lost circulation and to contain "kicks" will be available at wellsite.				

7. Testing, Logging and Core Programs

Cores	None anticipated;
Testing	None anticipated;
Surveys	Run every 1000' and on trips, full directional surveys
Logging	DIL-GR-SP, FDC-CNL-GR-CAL-Pe-Microlog, all TD to surface.

8. Anticipated Abnormal Pressures or Temperatures

No abnormal pressures or temperatures or other hazards are anticipated.

Maximum anticipated bottom hole pressure equals approximately 3808 psi* and maximum anticipated surface pressure equals approximately 2181 psi** (bottom hole pressure minus the pressure of a partially evacuated hole calculated at 0.22 psi/foot).

*Max Mud Wt x 0.052 x TD = A (bottom hole pressure)

**Maximum surface pressure = A – (0.22 x TD)

9. Auxiliary Equipment

- Upper kelly cock; lower Kelly cock will be installed while drilling
- Inside BOP or stab-in valve (available on rig floor)
- Safety valve(s) and subs to fit all string connections in use
- Mud monitoring will be visually observed

Bill Barrett Corporation
Drilling Program
GGU Federal 41A-29-691
Garfield County, Colorado

10. Drilling Schedule

Location Construction: November 1, 2010
Spud: November 15, 2010
Duration: 7 to 12 days drilling time
7 to 10 days completion time (each well)
(note: completion activities would not necessarily begin immediately
upon the completion of drilling operations)

BILL BARRETT CORP

GARFIELD COUNTY, COLORADO NAD 1983

MDP #11

GGU Federal #41A-29-691

GGU Federal #41A-29-691

Plan: Design #1

Standard Planning Report

28 April, 2010

BBC
Planning Report

Database: Compass
Company: BILL BARRETT CORP
Project: GARFIELD COUNTY, COLORADO NAD 1983
Site: MDP #11
Well: GGU Federal #41A-29-691
Wellbore: GGU Federal #41A-29-691
Design: Design #1

Local Co-ordinate Reference: Well GGU Federal #41A-29-691
TVD Reference: WELL @ 0.00ft (Original Well Elev)
MD Reference: WELL @ 0.00ft (Original Well Elev)
North Reference: Grid
Survey Calculation Method: Minimum Curvature

Project	GARFIELD COUNTY, COLORADO NAD 1983		
Map System:	US State Plane 1983	System Datum:	Mean Sea Level
Geo Datum:	North American Datum 1983		
Map Zone:	Colorado Central Zone		

Site	MDP #11				
Site Position:		Northing:	1,614,678.473 ft	Latitude:	39° 30' 9.890 N
From:	Lat/Long	Easting:	2,415,085.675 ft	Longitude:	107° 34' 23.0500 W
Position Uncertainty:	0.00 ft	Slot Radius:	"	Grid Convergence:	-1.31 °

Well	GGU Federal #41A-29-691					
Well Position	+N/-S	-0.03 ft	Northing:	1,614,678.446 ft	Latitude:	39° 30' 9.890 N
	+E/-W	0.00 ft	Easting:	2,415,085.674 ft	Longitude:	107° 34' 23.0500 W
Position Uncertainty		0.00 ft	Wellhead Elevation:	ft	Ground Level:	0.00 ft

Wellbore	GGU Federal #41A-29-691				
Magnetics	Model Name	Sample Date	Declination (°)	Dip Angle (°)	Field Strength (nT)
	IGRF200510	12/31/2009	10.33	65.87	52,532

Design	Design #1			
Audit Notes:				
Version:	Phase:	PROTOTYPE	Tie On Depth:	0.00
Vertical Section:	Depth From (TVD) (ft)	+N/-S (ft)	+E/-W (ft)	Direction (°)
	0.00	0.00	0.00	81.93

Plan Sections										
Measured Depth (ft)	Inclination (°)	Azimuth (°)	Vertical Depth (ft)	+N/-S (ft)	+E/-W (ft)	Dogleg Rate (°/100ft)	Buidl Rate (°/100ft)	Turn Rate (°/100ft)	TFO (°)	Target
0.00	0.00	0.00	0.00	0.00	0.00	0.00	0.00	0.00	0.00	
839.70	0.00	0.00	839.70	0.00	0.00	0.00	0.00	0.00	0.00	
1,239.32	9.99	81.93	1,237.30	4.88	34.41	2.50	2.50	0.00	81.93	
4,419.65	9.99	81.93	4,369.40	82.31	580.68	0.00	0.00	0.00	0.00	
4,819.27	0.00	0.00	4,767.00	87.19	615.09	2.50	-2.50	0.00	180.00	
7,449.27	0.00	0.00	7,397.00	87.19	615.09	0.00	0.00	0.00	0.00	PBHL_GGU Fed 41

BBC

Planning Report

Database: Compass
Company: BILL BARRETT CORP
Project: GARFIELD COUNTY, COLORADO NAD 1983
Site: MDP #11
Well: GGU Federal #41A-29-691
Wellbore: GGU Federal #41A-29-691
Design: Design #1

Local Co-ordinate Reference: Well GGU Federal #41A-29-691
TVD Reference: WELL @ 0.00ft (Original Well Elev)
MD Reference: WELL @ 0.00ft (Original Well Elev)
North Reference: Grid
Survey Calculation Method: Minimum Curvature

Planned Survey

Measured Depth (ft)	Inclination (°)	Azimuth (°)	Vertical Depth (ft)	+N/-S (ft)	+E/-W (ft)	Vertical Section (ft)	Dogleg Rate (°/100ft)	Build Rate (°/100ft)	Turn Rate (°/100ft)
0.00	0.00	0.00	0.00	0.00	0.00	0.00	0.00	0.00	0.00
100.00	0.00	0.00	100.00	0.00	0.00	0.00	0.00	0.00	0.00
200.00	0.00	0.00	200.00	0.00	0.00	0.00	0.00	0.00	0.00
300.00	0.00	0.00	300.00	0.00	0.00	0.00	0.00	0.00	0.00
400.00	0.00	0.00	400.00	0.00	0.00	0.00	0.00	0.00	0.00
500.00	0.00	0.00	500.00	0.00	0.00	0.00	0.00	0.00	0.00
600.00	0.00	0.00	600.00	0.00	0.00	0.00	0.00	0.00	0.00
700.00	0.00	0.00	700.00	0.00	0.00	0.00	0.00	0.00	0.00
739.70	0.00	0.00	739.70	0.00	0.00	0.00	0.00	0.00	0.00
Surface Casing									
800.00	0.00	0.00	800.00	0.00	0.00	0.00	0.00	0.00	0.00
839.70	0.00	0.00	839.70	0.00	0.00	0.00	0.00	0.00	0.00
900.00	1.51	81.93	899.99	0.11	0.79	0.79	2.50	2.50	0.00
1,000.00	4.01	81.93	999.87	0.79	5.55	5.60	2.50	2.50	0.00
1,100.00	6.51	81.93	1,099.44	2.07	14.62	14.77	2.50	2.50	0.00
1,200.00	9.01	81.93	1,198.52	3.97	27.98	28.26	2.50	2.50	0.00
1,239.32	9.99	81.93	1,237.30	4.88	34.41	34.75	2.50	2.50	0.00
1,300.00	9.99	81.93	1,297.06	6.35	44.83	45.28	0.00	0.00	0.00
1,400.00	9.99	81.93	1,395.54	8.79	62.01	62.63	0.00	0.00	0.00
1,500.00	9.99	81.93	1,494.03	11.22	79.18	79.98	0.00	0.00	0.00
1,600.00	9.99	81.93	1,592.51	13.66	96.36	97.32	0.00	0.00	0.00
1,700.00	9.99	81.93	1,690.99	16.09	113.54	114.67	0.00	0.00	0.00
1,800.00	9.99	81.93	1,789.48	18.53	130.71	132.02	0.00	0.00	0.00
1,900.00	9.99	81.93	1,887.96	20.96	147.89	149.37	0.00	0.00	0.00
2,000.00	9.99	81.93	1,986.44	23.40	165.07	166.72	0.00	0.00	0.00
2,100.00	9.99	81.93	2,084.93	25.83	182.24	184.07	0.00	0.00	0.00
2,200.00	9.99	81.93	2,183.41	28.27	199.42	201.41	0.00	0.00	0.00
2,300.00	9.99	81.93	2,281.89	30.70	216.60	218.76	0.00	0.00	0.00
2,400.00	9.99	81.93	2,380.38	33.14	233.77	236.11	0.00	0.00	0.00
2,500.00	9.99	81.93	2,478.86	35.57	250.95	253.46	0.00	0.00	0.00
2,600.00	9.99	81.93	2,577.35	38.01	268.13	270.81	0.00	0.00	0.00
2,700.00	9.99	81.93	2,675.83	40.44	285.30	288.16	0.00	0.00	0.00
2,800.00	9.99	81.93	2,774.31	42.88	302.48	305.51	0.00	0.00	0.00
2,900.00	9.99	81.93	2,872.80	45.31	319.66	322.85	0.00	0.00	0.00
3,000.00	9.99	81.93	2,971.28	47.75	336.83	340.20	0.00	0.00	0.00
3,100.00	9.99	81.93	3,069.76	50.18	354.01	357.55	0.00	0.00	0.00
3,200.00	9.99	81.93	3,168.25	52.62	371.19	374.90	0.00	0.00	0.00
3,300.00	9.99	81.93	3,266.73	55.05	388.37	392.25	0.00	0.00	0.00
3,400.00	9.99	81.93	3,365.21	57.49	405.54	409.60	0.00	0.00	0.00
3,500.00	9.99	81.93	3,463.70	59.92	422.72	426.94	0.00	0.00	0.00
3,533.81	9.99	81.93	3,497.00	60.74	428.53	432.81	0.00	0.00	0.00
Mesaverde									
3,600.00	9.99	81.93	3,562.18	62.36	439.90	444.29	0.00	0.00	0.00
3,700.00	9.99	81.93	3,660.67	64.79	457.07	461.64	0.00	0.00	0.00
3,800.00	9.99	81.93	3,759.15	67.23	474.25	478.99	0.00	0.00	0.00
3,900.00	9.99	81.93	3,857.63	69.66	491.43	496.34	0.00	0.00	0.00
4,000.00	9.99	81.93	3,956.12	72.10	508.60	513.69	0.00	0.00	0.00
4,100.00	9.99	81.93	4,054.60	74.53	525.78	531.03	0.00	0.00	0.00
4,200.00	9.99	81.93	4,153.08	76.97	542.96	548.38	0.00	0.00	0.00
4,300.00	9.99	81.93	4,251.57	79.40	560.13	565.73	0.00	0.00	0.00
4,346.13	9.99	81.93	4,297.00	80.52	568.06	573.73	0.00	0.00	0.00
Price Coal									
4,400.00	9.99	81.93	4,350.05	81.83	577.31	583.08	0.00	0.00	0.00

BBC

Planning Report

Database: Compass
Company: BILL BARRETT CORP
Project: GARFIELD COUNTY, COLORADO NAD 1983
Site: MDP #11
Well: GGU Federal #41A-29-691
Wellbore: GGU Federal #41A-29-691
Design: Design #1

Local Co-ordinate Reference: Well GGU Federal #41A-29-691
TVD Reference: WELL @ 0.00ft (Original Well Elev)
MD Reference: WELL @ 0.00ft (Original Well Elev)
North Reference: Grid
Survey Calculation Method: Minimum Curvature

Planned Survey

Measured Depth (ft)	Inclination (°)	Azimuth (°)	Vertical Depth (ft)	+N-S (ft)	+E-W (ft)	Vertical Section (ft)	Dogleg Rate (°/100ft)	Build Rate (°/100ft)	Turn Rate (°/100ft)
4,419.65	9.99	81.93	4,369.40	82.31	580.68	586.49	0.00	0.00	0.00
4,500.00	7.98	81.93	4,448.76	84.07	593.11	599.04	2.50	-2.50	0.00
4,600.00	5.48	81.93	4,548.07	85.72	604.71	610.76	2.50	-2.50	0.00
4,700.00	2.98	81.93	4,647.79	86.76	612.02	618.14	2.50	-2.50	0.00
4,800.00	0.48	81.93	4,747.73	87.18	615.01	621.16	2.50	-2.50	0.00
4,819.27	0.00	0.00	4,767.00	87.19	615.09	621.24	2.50	-2.50	0.00
Top of Gas									
4,900.00	0.00	0.00	4,847.73	87.19	615.09	621.24	0.00	0.00	0.00
5,000.00	0.00	0.00	4,947.73	87.19	615.09	621.24	0.00	0.00	0.00
5,100.00	0.00	0.00	5,047.73	87.19	615.09	621.24	0.00	0.00	0.00
5,200.00	0.00	0.00	5,147.73	87.19	615.09	621.24	0.00	0.00	0.00
5,300.00	0.00	0.00	5,247.73	87.19	615.09	621.24	0.00	0.00	0.00
5,400.00	0.00	0.00	5,347.73	87.19	615.09	621.24	0.00	0.00	0.00
5,500.00	0.00	0.00	5,447.73	87.19	615.09	621.24	0.00	0.00	0.00
5,600.00	0.00	0.00	5,547.73	87.19	615.09	621.24	0.00	0.00	0.00
5,700.00	0.00	0.00	5,647.73	87.19	615.09	621.24	0.00	0.00	0.00
5,800.00	0.00	0.00	5,747.73	87.19	615.09	621.24	0.00	0.00	0.00
5,900.00	0.00	0.00	5,847.73	87.19	615.09	621.24	0.00	0.00	0.00
6,000.00	0.00	0.00	5,947.73	87.19	615.09	621.24	0.00	0.00	0.00
6,100.00	0.00	0.00	6,047.73	87.19	615.09	621.24	0.00	0.00	0.00
6,200.00	0.00	0.00	6,147.73	87.19	615.09	621.24	0.00	0.00	0.00
6,300.00	0.00	0.00	6,247.73	87.19	615.09	621.24	0.00	0.00	0.00
6,400.00	0.00	0.00	6,347.73	87.19	615.09	621.24	0.00	0.00	0.00
6,500.00	0.00	0.00	6,447.73	87.19	615.09	621.24	0.00	0.00	0.00
6,600.00	0.00	0.00	6,547.73	87.19	615.09	621.24	0.00	0.00	0.00
6,700.00	0.00	0.00	6,647.73	87.19	615.09	621.24	0.00	0.00	0.00
6,800.00	0.00	0.00	6,747.73	87.19	615.09	621.24	0.00	0.00	0.00
6,900.00	0.00	0.00	6,847.73	87.19	615.09	621.24	0.00	0.00	0.00
7,000.00	0.00	0.00	6,947.73	87.19	615.09	621.24	0.00	0.00	0.00
7,100.00	0.00	0.00	7,047.73	87.19	615.09	621.24	0.00	0.00	0.00
7,149.27	0.00	0.00	7,097.00	87.19	615.09	621.24	0.00	0.00	0.00
Rollins									
7,200.00	0.00	0.00	7,147.73	87.19	615.09	621.24	0.00	0.00	0.00
7,300.00	0.00	0.00	7,247.73	87.19	615.09	621.24	0.00	0.00	0.00
7,400.00	0.00	0.00	7,347.73	87.19	615.09	621.24	0.00	0.00	0.00
7,449.27	0.00	0.00	7,397.00	87.19	615.09	621.24	0.00	0.00	0.00

Casing Points

Measured Depth (ft)	Vertical Depth (ft)	Name	Casing Diameter (")	Hole Diameter (")
739.70	739.70	Surface Casing	9-5/8	12-1/4

BBC
Planning Report

Database: Compass
Company: BILL BARRETT CORP
Project: GARFIELD COUNTY, COLORADO NAD 1983
Site: MDP #11
Well: GGU Federal #41A-29-691
Wellbore: GGU Federal #41A-29-691
Design: Design #1

Local Co-ordinate Reference: Well GGU Federal #41A-29-691
TVD Reference: WELL @ 0.00ft (Original Well Elev)
MD Reference: WELL @ 0.00ft (Original Well Elev)
North Reference: Grid
Survey Calculation Method: Minimum Curvature

Formations

Measured Depth (ft)	Vertical Depth (ft)	Name	Lithology	Dip (°)	Dip Direction (°)
3,533.81	3,497.00	Mesaverde		0.00	
4,346.13	4,297.00	Price Coal		0.00	
4,819.27	4,767.00	Top of Gas		0.00	
7,149.27	7,097.00	Rollins		0.00	

WELL DETAILS: GGU Federal #41A-29-691

Ground Level: 0.00
 +N/-S +E/-W Northing Easting Latitude Longitude Slot
 0.00 0.00 1614678.446 2415085.639 30° 30' 9.890" N 104° 23.0500 W



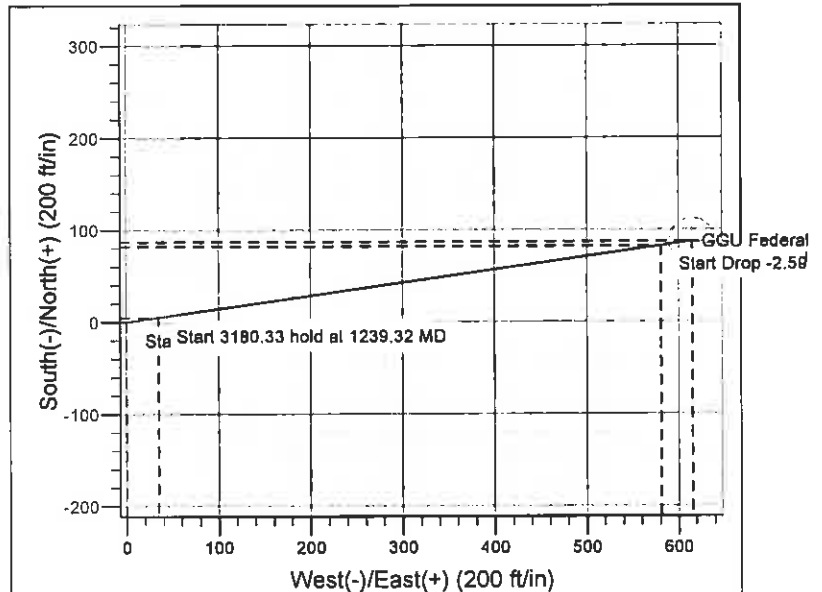
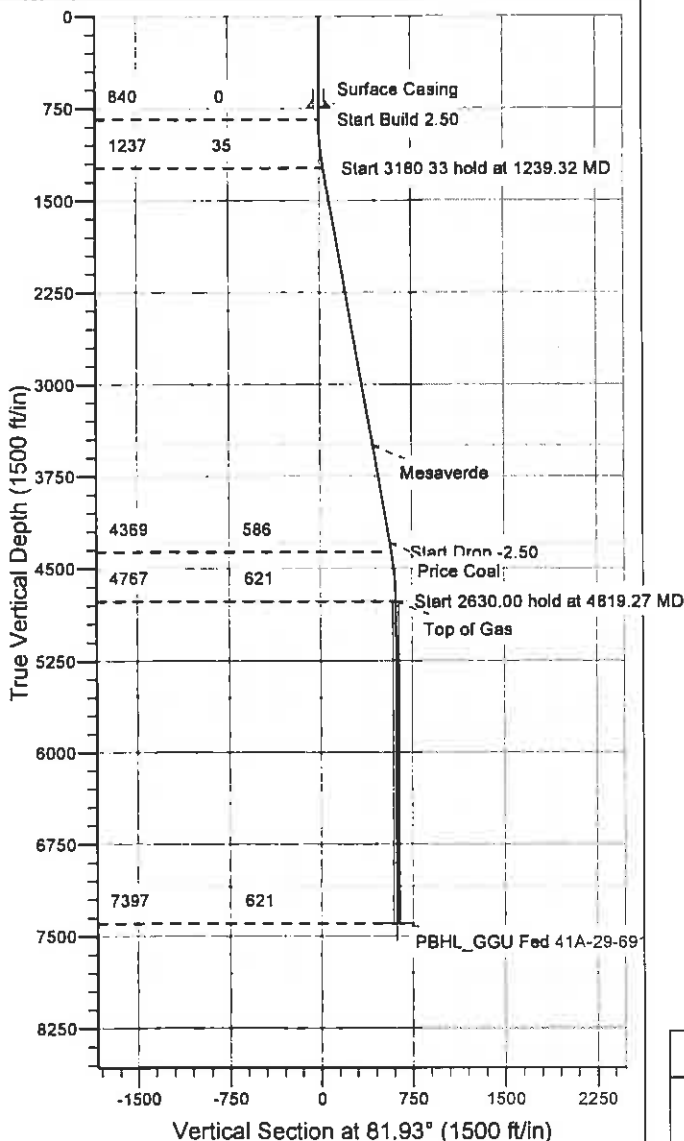
Azimuths to Grid North
 True North: 1.31°
 Magnetic North: 11.64°
 Magnetic Field
 Strength: 52532.1snT
 Dip Angle: 65.87°
 Date: 12/31/2009
 Model: IGRF200510

SECTION DETAILS

Sec	MD	Inc	Azi	TVD	+N/-S	+E/-W	DLeg	TFace	VSec	Target
1	0.00	0.00	0.00	0.00	0.00	0.00	0.00	0.00	0.00	
2	39.70	0.00	0.00	839.70	0.00	0.00	0.00	0.00	0.00	
3	1239.32	9.99	81.93	1237.30	4.88	34.41	2.50	81.93	34.75	
4	19.65	9.99	81.93	4369.40	82.31	580.68	0.00	0.00	586.49	
5	19.27	0.00	0.00	4767.00	87.19	615.09	2.50	180.00	621.24	
6	149.27	0.00	0.00	7397.00	87.19	615.09	0.00	0.00	621.24	PBHL_GGU Fed 41A-29-691

WELLBORE TARGET DETAILS

Name TVD +N/-S +E/-W Shape
 PBHL_GGU Fed 41A-29-691 7397.00 615.09 Circle (Radius: 25.00)



CASING DETAILS

TVD MD Name Size
 739.70 739.70 Surface Casing 9-5/8

FORMATION TOP DETAILS

TVD Path MDP Path Formation
 3497.00 533.81 Mesaverde
 4297.00 346.13 Price Coal
 4767.00 819.27 Top of Gas
 7097.00 149.27 Rollins

REFERENCE INFORMATION

Co-ordinate (N/E) Reference: Well GGU Federal #41A-29-691, Grid North
 Vertical (TVD) Reference: WELL @ 0.00ft (Original Well Elev)
 Section (VS) Reference: Slot - (0.00N, 0.00E)
 Measured Depth Reference: WELL @ 0.00ft (Original Well Elev)
 Calculation Method: Minimum Curvature

Job Information

Surface Casing

Well Name: GGU Federal

Well #: 41A-29-691

12 1/4" Surface Open Hole
Inner Diameter
Job Excess

0 - 740 ft (MD)
12.250 in
75 %

9 5/8" Surface Casing
Outer Diameter
Inner Diameter
Linear Weight

0 - 740 ft (MD)
9.625 in
8.921 in
36 lbm/ft

Calculations**Surface Casing**

Spacer:

$$\begin{aligned}\text{Total Spacer} &= 112.29 \text{ ft}^3 \\ &= 20.00 \text{ bbl}\end{aligned}$$

Cement : (435.00 ft fill)

$$\begin{aligned}435.00 \text{ ft} * 0.3132 \text{ ft}^3/\text{ft} * 75 \% &= 238.41 \text{ ft}^3 \\ \text{Total Lead Cement} &= 238.41 \text{ ft}^3 \\ &= 42.46 \text{ bbl}\end{aligned}$$

$$\text{Sacks of Cement} = 120 \text{ sks}$$

Cement : (305.00 ft fill)

$$\begin{aligned}305.00 \text{ ft} * 0.3132 \text{ ft}^3/\text{ft} * 75 \% &= 167.16 \text{ ft}^3 \\ \text{Tail Cement} &= 167.16 \text{ ft}^3 \\ &= 29.77 \text{ bbl}\end{aligned}$$

Shoe Joint Volume: (0.00 ft fill)

$$\begin{aligned}0.00 \text{ ft} * 0.4341 \text{ ft}^3/\text{ft} &= 0.00 \text{ ft}^3 \\ &= 0.00 \text{ bbl} \\ \text{Tail plus shoe joint} &= 167.16 \text{ ft}^3 \\ &= 29.77 \text{ bbl} \\ \text{Total Tail} &= 120 \text{ sks}\end{aligned}$$

Total Pipe Capacity:

$$\begin{aligned}740.00 \text{ ft} * 0.4341 \text{ ft}^3/\text{ft} &= 321.21 \text{ ft}^3 \\ &= 57.21 \text{ bbl}\end{aligned}$$

Displacement Volume to Shoe Joint:

$$\begin{aligned}\text{Capacity of Pipe - Shoe Joint} &= 57.21 \text{ bbl} - 0.00 \text{ bbl} \\ &= 57.21 \text{ bbl}\end{aligned}$$

Job Recommendation

Surface Casing

Fluid Instructions

Fluid 1: Water Spacer

Water Spacer

Fluid Density: 8.34 lbm/gal

Fluid Volume: 20 bbl

Fluid 2: Lead Cement

VERSACEM (TM) SYSTEM

0.125 lbm/sk Poly-E-Flake (Lost Circulation Additive)

Fluid Weight 12.30 lbm/gal

Slurry Yield: 2.35 ft³/sk

Total Mixing Fluid: 13.42 Gal/sk

Top of Fluid: 0 ft

Calculated Fill: 435 ft

Volume: 50.14 bbl

Calculated Sacks: 120 sks

Proposed Sacks: 120 sks

Fluid 3: Tail Cement

SWIFTCES (TM) SYSTEM

0.25 lbm/sk Poly-E-Flake (Lost Circulation Additive)

Fluid Weight 14.20 lbm/gal

Slurry Yield: 1.39 ft³/sk

Total Mixing Fluid: 6.64 Gal/sk

Top of Fluid: 435 ft

Calculated Fill: 305 ft

Volume: 29.79 bbl

Calculated Sacks: 120 sks

Proposed Sacks: 120 sks

Detailed Pumping Schedule

Fluid #	Fluid Type	Fluid Name	Surface Density lbm/gal	Estimated Avg Rate bbl/min	Downhole Volume
1	Spacer	Water Spacer	8.3	7.0	20 bbl
2	Cement	VersaCem	12.3	7.0	120 sks
3	Cement	SwiftCem	14.2	7.0	120 sks

Job Information**Production Casing**

Well Name: GGU Federal

Well #: 41A-29-691

9 5/8" Surface Casing	0 - 740 ft (MD)
Outer Diameter	9.625 in
Inner Diameter	8.921 in
Linear Weight	36 lbm/ft
8 3/4" Production Open Hole	740 - 5250 ft (MD)
Inner Diameter	8.750 in
Job Excess	15 %
7 7/8" Production Open Hole	5250 - 7449 ft (MD)
Inner Diameter	7.875 in
Job Excess	15 %
4 1/2" Production Casing	0 - 7449 ft (MD)
	0 - 7397 ft (TVD)
Outer Diameter	4.500 in
Inner Diameter	4.000 in
Linear Weight	11.60 lbm/ft

Calculations**Production Casing**

Spacer:

$$\begin{aligned} 318.00 \text{ ft} * 0.3071 \text{ ft}^3/\text{ft} * 15 \% &= 112.32 \text{ ft}^3 \\ \text{Total Spacer} &= 112.29 \text{ ft}^3 \\ &= 20.00 \text{ bbl} \end{aligned}$$

Spacer:

$$\begin{aligned} 318.00 \text{ ft} * 0.3071 \text{ ft}^3/\text{ft} * 15 \% &= 112.32 \text{ ft}^3 \\ \text{Total Spacer} &= 112.29 \text{ ft}^3 \\ &= 20.00 \text{ bbl} \end{aligned}$$

Cement : (4415.00 ft fill)

$$\begin{aligned} 2216.00 \text{ ft} * 0.3071 \text{ ft}^3/\text{ft} * 15 \% &= 782.71 \text{ ft}^3 \\ 2199.00 \text{ ft} * 0.2278 \text{ ft}^3/\text{ft} * 15 \% &= 576.06 \text{ ft}^3 \\ \text{Tail Cement} &= 1358.77 \text{ ft}^3 \\ &= 242.01 \text{ bbl} \end{aligned}$$

Shoe Joint Volume: (0.00 ft fill)

$$\begin{aligned} 0.00 \text{ ft} * 0.0873 \text{ ft}^3/\text{ft} &= 0.00 \text{ ft}^3 \\ &= 0.00 \text{ bbl} \\ \text{Tail plus shoe joint} &= 1358.77 \text{ ft}^3 \\ &= 242.01 \text{ bbl} \\ \text{Total Tail} &= 897 \text{ sks} \end{aligned}$$

Total Pipe Capacity:

$$\begin{aligned} 7449.00 \text{ ft} * 0.0873 \text{ ft}^3/\text{ft} &= 650.05 \text{ ft}^3 \\ &= 115.78 \text{ bbl} \end{aligned}$$

Displacement Volume to Shoe Joint:

$$\begin{aligned} \text{Capacity of Pipe - Shoe Joint} &= 115.78 \text{ bbl} - 0.00 \text{ bbl} \\ &= 115.78 \text{ bbl} \end{aligned}$$

Job Recommendation

Production Casing

Fluid Instructions

Fluid 1: Water Based Spacer
SUPER FLUSH 101

Fluid Density: 10 lbm/gal
Fluid Volume: 20 bbl

Fluid 2: Water Spacer
Fresh Water

Fluid Density: 8.33 lbm/gal
Fluid Volume: 20 bbl

Fluid 3: Tail Cement

HALCEM (TM) SYSTEM
0.25 lbm/sk Poly-E-Flake (Lost Circulation Additive)
0.3 % HR-5 (Retarder)

Fluid Weight 13.10 lbm/gal
Slurry Yield: 1.51 ft³/sk
Total Mixing Fluid: 6.93 Gal/sk
Top of Fluid: 3034 ft
Calculated Fill: 4415 ft
Volume: 242.01 bbl
Calculated Sacks: 897.47 sks
Proposed Sacks: 900 sks

Fluid 4: Water Based Spacer
ClayFix III Displacement
1.5 gal/Mgal CLAYFIX 3 (Clay Control)

Fluid Density: 8.40 lbm/gal
Fluid Volume: 115.78 bbl

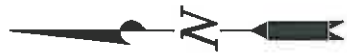
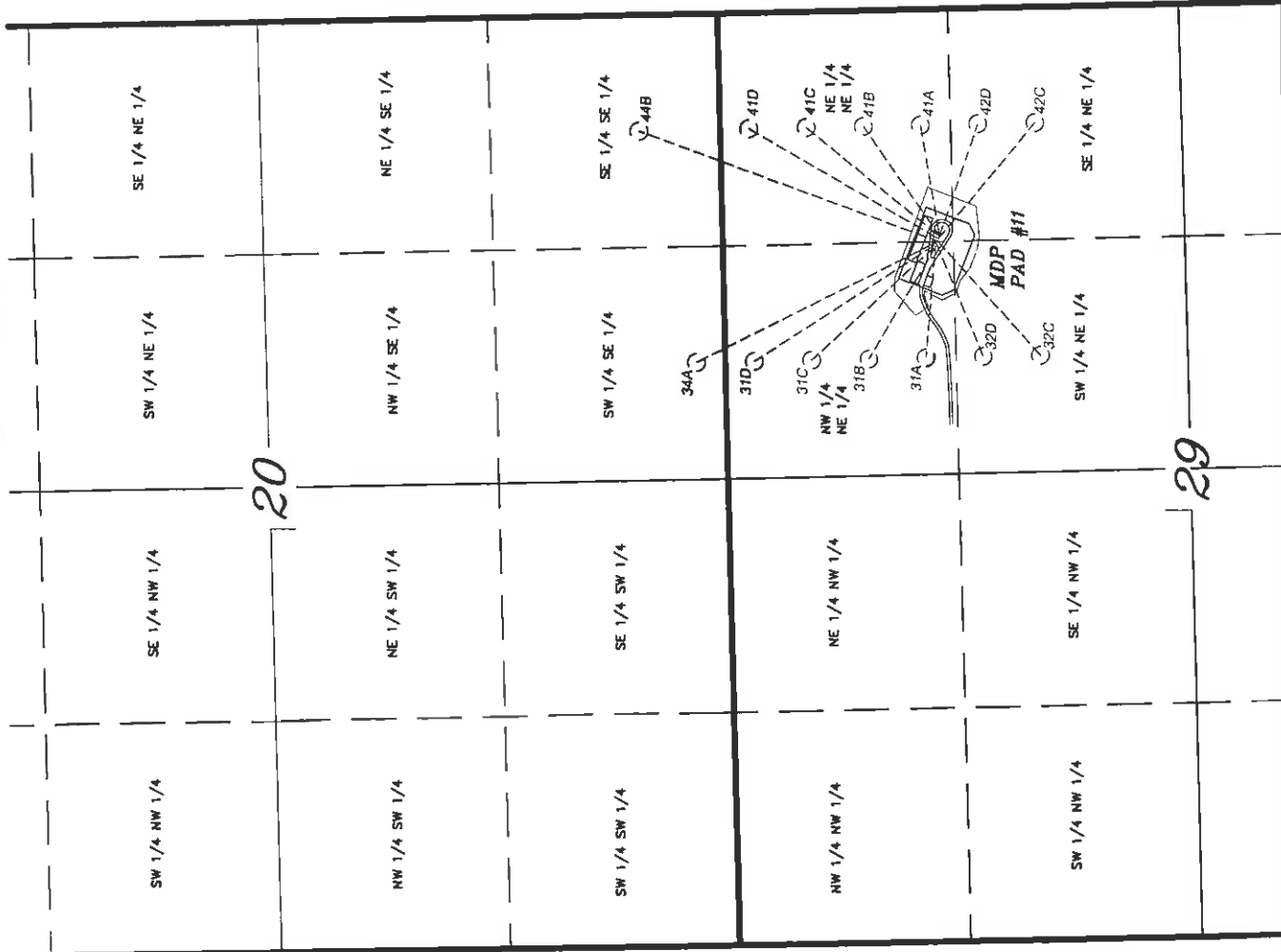
Detailed Pumping Schedule

Fluid #	Fluid Type	Fluid Name	Surface Density lbm/gal	Estimated Avg Rate bbl/min	Downhole Volume
1	Spacer	SUPER FLUSH 101	10.0		20 bbl
2	Spacer	Fresh Water	8.3	4.0	20 bbl
3	Cement	HalCem	13.1	5.0	900 sks
4	Spacer	ClayFix III Displacement	8.4	5.0	115.78 bbl

T6S, R91W, 6th P.M.

BILL BARRETT CORP.

GENERAL MUTLI WELL PLAN
SECTION DRILLING MAP
WELL PAD (MDP PAD #11)



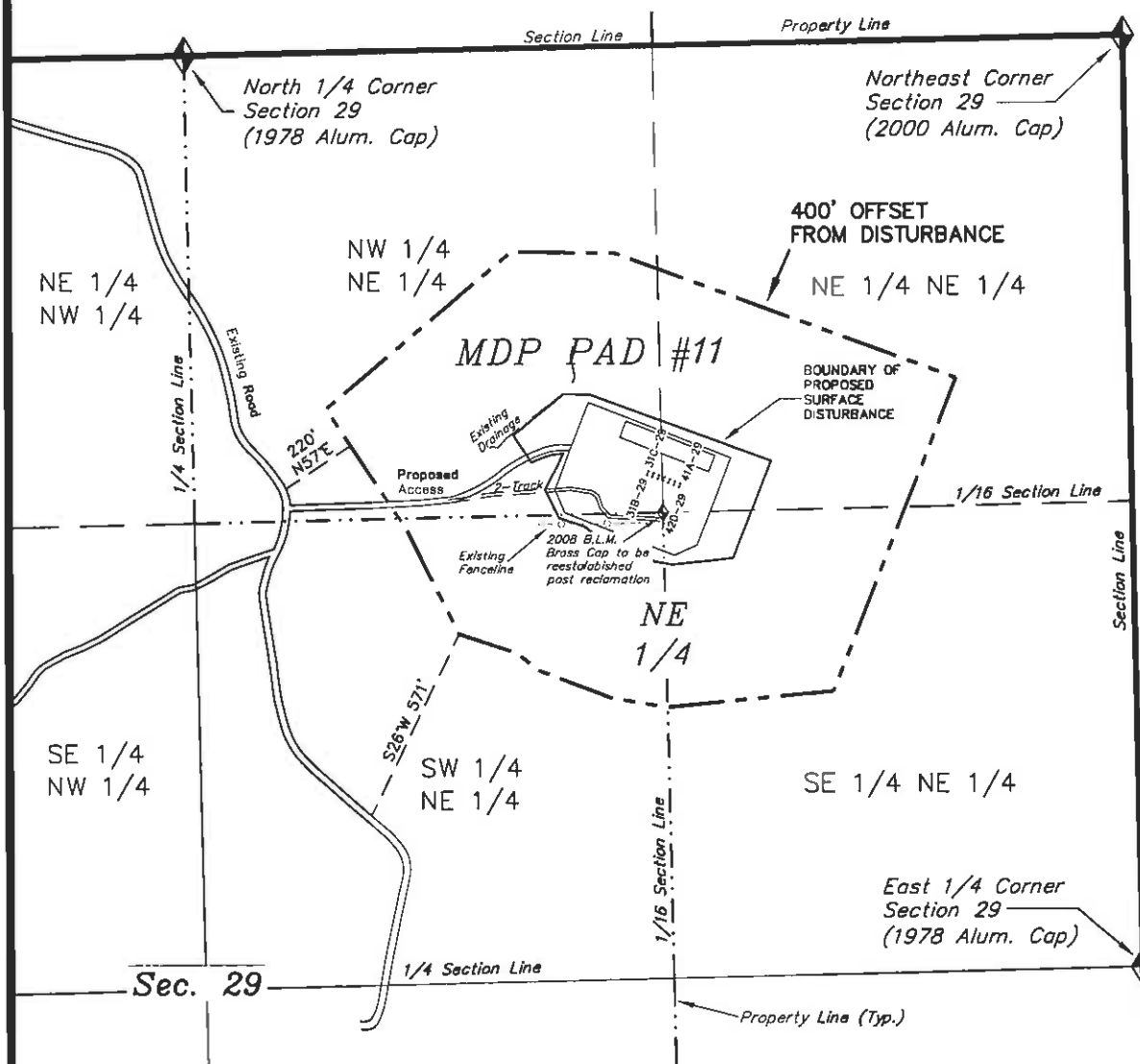
LATITUDE & LONGITUDE Surface position of Wells (NAD 83)		
WELL	LATITUDE	LONGITUDE
41A-29	39° 30' 09.89"	107° 34' 23.05"
41C-29	39° 30' 09.95"	107° 34' 23.24"
41D-29	39° 30' 10.00"	107° 34' 23.43"
44B-20	39° 30' 10.08"	107° 34' 23.62"
34A-20	39° 30' 10.12"	107° 34' 23.81"
31D-29	39° 30' 10.18"	107° 34' 24.00"
31C-29	39° 30' 10.23"	107° 34' 24.19"
42D-29	39° 30' 09.80"	107° 34' 23.10"
41B-29	39° 30' 09.85"	107° 34' 23.29"
42C-29	39° 30' 09.91"	107° 34' 23.48"
32C-29	39° 30' 09.97"	107° 34' 23.67"
32D-29	39° 30' 10.03"	107° 34' 23.86"
31A-29	39° 30' 10.08"	107° 34' 24.05"
31B-29	39° 30' 10.14"	107° 34' 24.24"

LATITUDE & LONGITUDE Bottom hole position of Wells (NAD 83)		
WELL	LATITUDE	LONGITUDE
41A-29	39° 30' 10.89"	107° 34' 15.23"
41C-29	39° 30' 17.35"	107° 34' 15.37"
41D-29	39° 30' 20.58"	107° 34' 15.43"
44B-20	39° 30' 26.76"	107° 34' 15.58"
34A-20	39° 30' 23.61"	107° 34' 32.41"
31D-29	39° 30' 20.35"	107° 34' 32.34"
31C-29	39° 30' 17.12"	107° 34' 32.28"
42D-29	39° 30' 07.68"	107° 34' 15.18"
41B-29	39° 30' 14.12"	107° 34' 15.30"
42C-29	39° 30' 04.43"	107° 34' 15.10"
32C-29	39° 30' 04.20"	107° 34' 32.01"
32D-29	39° 30' 07.43"	107° 34' 32.07"
31A-29	39° 30' 10.66"	107° 34' 32.14"
31B-29	39° 30' 13.89"	107° 34' 32.21"

TRI STATE LAND SURVEYING & CONSULTING
180 NORTH VERNAL AVE. - VERNAL, UTAH 84078
(435) 781-2501

DATE SURVEYED: 01-05-10	SURVEYED BY: C.D.S	SHEET 1
DATE DRAWN: 01-19-10	DRAWN BY: F.T.V	
REVISED:	SCALE: 1" = 1000'	OF 12

BILL BARRETT CORP.
ADDENDUM TO LEGAL PLATS
 WELL PAD: (MDP PAD #11)
 Section 29, T6S, R91W, 6th P.M.



PLANT COMMUNITY (non-crop land)	
<input type="checkbox"/> DISTURBED	<input type="checkbox"/> EVERGREEN FORREST LAND
<input type="checkbox"/> GRASSLAND	<input type="checkbox"/> RANGELAND
<input checked="" type="checkbox"/> SHRUB & BRUSH LAND	<input type="checkbox"/> TIMBER
<input type="checkbox"/> PLAINS DECIDUOUS RIPARIAN	<input type="checkbox"/> RECREATIONAL
<input type="checkbox"/> MOUNTAIN CONIFER RIPARIAN	<input type="checkbox"/> OTHER: (Describe)

SURFACE USE OF THE PROPOSED WELL SITE		
<input type="checkbox"/> CROP LAND	<input checked="" type="checkbox"/> NON-CROP LAND	<input type="checkbox"/> SUBDIVIDED
<input type="checkbox"/> IRRIGATED	<input checked="" type="checkbox"/> RANGELAND	<input type="checkbox"/> INDUSTRIAL
<input type="checkbox"/> DRY LAND	<input type="checkbox"/> TIMBER	<input type="checkbox"/> COMMERCIAL
<input type="checkbox"/> IMPROVED PASTURE	<input type="checkbox"/> RECREATIONAL	<input type="checkbox"/> RESIDENTIAL
<input type="checkbox"/> HAY MEADOW	<input type="checkbox"/> OTHER: (Describe)	
<input type="checkbox"/> CRP		

Distances from Well Heads					
WELL	BUILDING	ABOVE GROUND UTILITY	PUBLIC ROAD	RAILROAD	PROPERTY LINE
41A-29	S18°W 1,080'	S18°W 1,080'	S88°W 1108'	N14°W 18,730'	S31°W 95.50'
41C-29	S18°W 1,080'	S18°W 1,080'	S88°W 1093'	N14°W 18,730'	S21°W 94.20'
41D-29	S18°W 1,080'	S18°W 1,080'	S85°W 1079'	N14°W 18,730'	S11°W 95.50'
44B-20	S18°W 1,080'	S18°W 1,080'	S85°W 1084'	N14°W 18,730'	S02°W 98.50'
34A-20	S18°W 1,080'	S18°W 1,080'	S85°W 1050'	N14°W 18,730'	S01°E 105.40'
31D-29	S18°W 1,080'	S18°W 1,080'	S84°W 1036'	N14°W 18,730'	S01°E 111.50'
31C-29	S18°W 1,080'	S18°W 1,080'	S84°W 1022'	N14°W 18,730'	S01°E 117.80'
42D-29	S18°W 1,080'	S18°W 1,080'	S87°W 1104'	N14°W 18,730'	S32°W 85.70'
41B-29	S18°W 1,080'	S18°W 1,080'	S88°W 1089'	N14°W 18,730'	S21°W 84.20'
42C-29	S18°W 1,080'	S18°W 1,080'	S88°W 1075'	N14°W 18,730'	S10°W 85.70'
32C-29	S18°W 1,080'	S18°W 1,080'	S88°W 1080'	N14°W 18,730'	S00°W 90.10'
32D-29	S18°W 1,080'	S18°W 1,080'	S85°W 1048'	N14°W 18,730'	S01°E 98.10'
31A-29	S18°W 1,080'	S18°W 1,080'	S85°W 1031'	N14°W 18,730'	S01°E 102.30'
31B-29	S18°W 1,080'	S18°W 1,080'	S84°W 1017'	N14°W 18,730'	S01°E 108.40'

SURVEYED BY: C.D.S. SURVEY DATE: 01-05-10
 DRAWN BY: F.T.M. DATE DRAWN: 01-19-10
 SCALE: 1" = 500' REVISED:

Tri State
 Land Surveying, Inc.
 180 NORTH VERNAL AVE. VERNAL, UTAH 84078

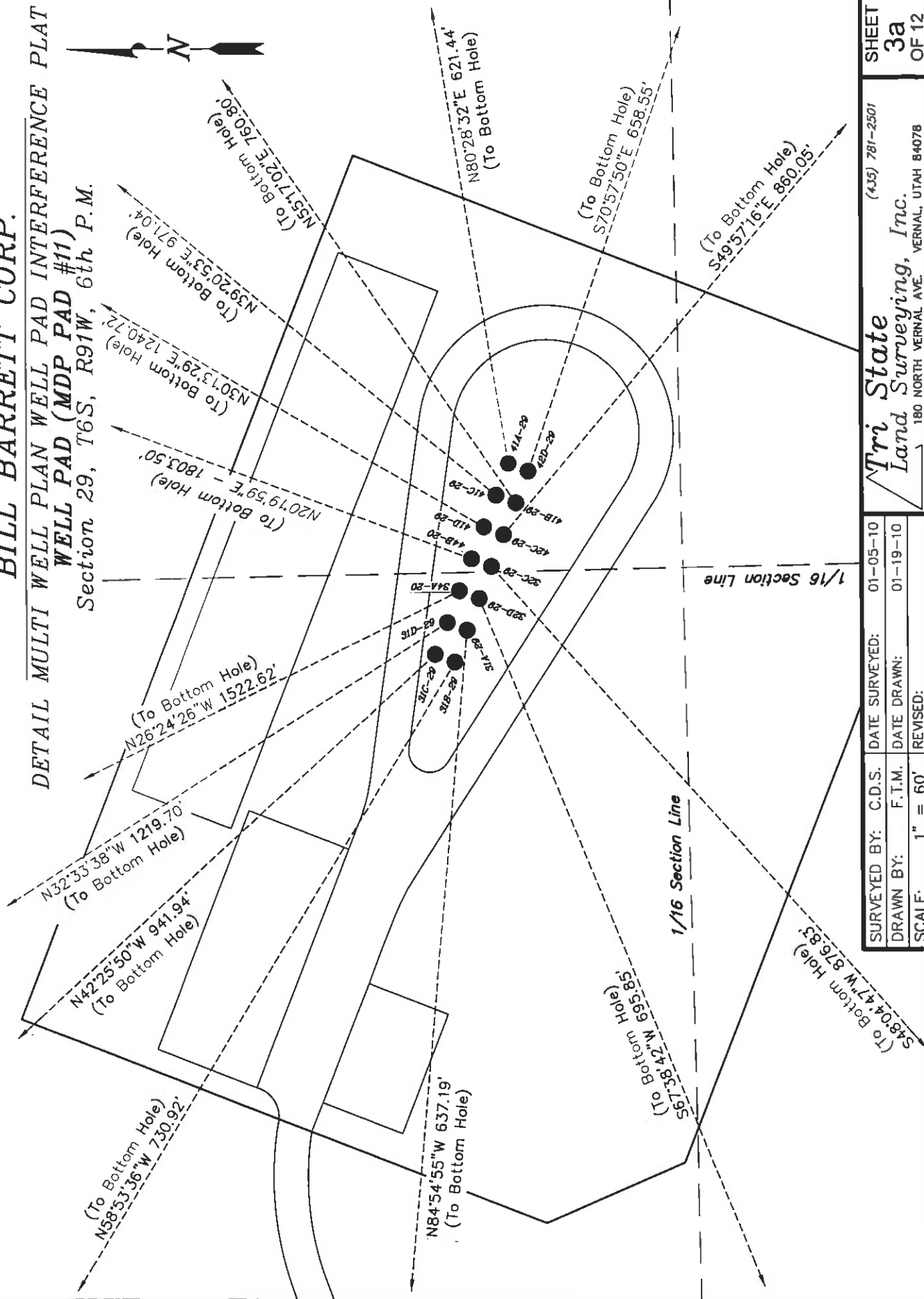
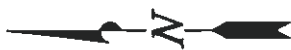
SHEET
 20
 OF 12

BILL BARRETT CORP.

DETAIL MULTI WELL PLAN WELL PAD INTERFERENCE PLAT

WELL PAD (MDP PAD #11)

Section 29, T6S, R91W, 6th P.M.



SHEET 3a OF 12

(435) 781-2501

Tri State Land Surveying, Inc.

180 NORTH VERNAL AVE. VERNAL, UTAH 84078

SURVEYED BY: C.D.S. DATE SURVEYED: 01-05-10

DRAWN BY: F.T.M. DATE DRAWN: 01-19-10

SCALE: 1" = 60' REVISED:

BILL BARRETT CORP.

DETAIL MULTI WELL PLAN WELL PAD INTERFERENCE PLAT WELL PAD (MDP PAD #11) Section 29, T6S, R91W, 6th P.M.

TOP HOLE FOOTAGES

GGU FEDERAL 41A-29-691
1236' FNL & 1279' FEL
GGU FEDERAL 41C-29-691
1230' FNL & 1293' FEL
GGU FEDERAL 41D-29-691
1224' FNL & 1308' FEL
GGU JOLLEY 44B-20-691
1218' FNL & 1323' FEL
GGU FEDERAL 34A-20-691
1212' FNL & 1338' FEL
GGU FEDERAL 31D-29-691
1206' FNL & 1353' FEL
GGU FEDERAL 31C-29-691
1200' FNL & 1367' FEL
GGU FEDERAL 42D-29-691
1246' FNL & 1282' FEL
GGU FEDERAL 41B-29-691
1240' FNL & 1367' FEL
GGU FEDERAL 42C-29-691
1234' FNL & 1312' FEL
GGU SWANSON 32C-29-691
1227' FNL & 1327' FEL
GGU SWANSON 32D-29-691
1221' FNL & 1342' FEL
GGU FEDERAL 31A-29-691
1215' FNL & 1356' FEL
GGU FEDERAL 31B-29-691
1209' FNL & 1371' FEL

BOTTOM HOLE FOOTAGES

GGU FEDERAL 41A-29-691
1146' FNL & 664' FEL
GGU FEDERAL 41C-29-691
492' FNL & 664' FEL
GGU FEDERAL 41D-29-691
165' FNL & 664' FEL
GGU JOLLEY 44B-20-691
460' FSL & 666' FEL
GGU FEDERAL 34A-20-691
165' FSL & 1990' FEL
GGU FEDERAL 31D-29-691
165' FNL & 1990' FEL
GGU FEDERAL 31C-29-691
492' FNL & 1990' FEL
GGU FEDERAL 42D-29-691
1473' FNL & 664' FEL
GGU FEDERAL 41B-29-691
819' FNL & 664' FEL
GGU FEDERAL 42C-29-691
1800' FNL & 664' FEL
GGU SWANSON 32C-29-691
1800' FNL & 1990' FEL
GGU SWANSON 32D-29-691
1473' FNL & 1990' FEL
GGU FEDERAL 31A-29-691
1146' FNL & 1990' FEL
GGU FEDERAL 31B-29-691
819' FNL & 1990' FEL

RELATIVE COORDINATES (From top hole to bottom hole)

WELL	NORTH	EAST
41A-29	103'	613'
41C-29	751'	616'
41D-29	1072'	625'
44B-20	1691'	627'
34A-20	1364'	-677'
31D-29	1028'	-656'
31C-29	695'	-636'
42D-29	-215'	623'
41B-29	433'	625'
42C-29	-553'	658'
32C-29	-586'	-652'
32D-29	-265'	-644'
31A-29	56'	-635'
31B-29	378'	-626'

LATITUDE & LONGITUDE Surface position of Wells (NAD 83)

WELL	LATITUDE	LONGITUDE
41A-29	39° 30' 09.89"	107° 34' 23.05"
41C-29	39° 30' 09.95"	107° 34' 23.24"
41D-29	39° 30' 10.00"	107° 34' 23.43"
44B-20	39° 30' 10.06"	107° 34' 23.62"
34A-20	39° 30' 10.12"	107° 34' 23.81"
31D-29	39° 30' 10.18"	107° 34' 24.00"
31C-29	39° 30' 10.23"	107° 34' 24.19"
42D-29	39° 30' 09.80"	107° 34' 23.10"
41B-29	39° 30' 09.85"	107° 34' 23.29"
42C-29	39° 30' 09.91"	107° 34' 23.48"
32C-29	39° 30' 09.97"	107° 34' 23.67"
32D-29	39° 30' 10.03"	107° 34' 23.86"
31A-29	39° 30' 10.08"	107° 34' 24.05"
31B-29	39° 30' 10.14"	107° 34' 24.24"

LATITUDE & LONGITUDE Bottom hole position of Wells (NAD 83)

WELL	LATITUDE	LONGITUDE
41A-29	39° 30' 10.89"	107° 34' 15.23"
41C-29	39° 30' 17.35"	107° 34' 15.37"
41D-29	39° 30' 20.58"	107° 34' 15.43"
44B-20	39° 30' 26.76"	107° 34' 15.58"
34A-20	39° 30' 23.61"	107° 34' 32.41"
31D-29	39° 30' 20.35"	107° 34' 32.34"
31C-29	39° 30' 17.12"	107° 34' 32.28"
42D-29	39° 30' 07.66"	107° 34' 15.16"
41B-29	39° 30' 14.12"	107° 34' 15.30"
42C-29	39° 30' 04.43"	107° 34' 15.10"
32C-29	39° 30' 04.20"	107° 34' 32.01"
32D-29	39° 30' 07.43"	107° 34' 32.07"
31A-29	39° 30' 10.66"	107° 34' 32.14"
31B-29	39° 30' 13.89"	107° 34' 32.21"

SURVEYED BY: C.D.S. DATE SURVEYED: 01-05-10
DRAWN BY: F.T.M. DATE DRAWN: 01-19-10
SCALE: 1" = 60' REVISED: L.C.S. 06-08-10

Tri State
Land Surveying, Inc.
180 NORTH VERNAL AVE. VERNAL, UTAH 84078
(435) 781-2501

SHEET
3b
OF 12

BILL BARRETT CORP.

LOCATION LAYOUT

WELL PAD: (MDP PAD #11)
Section 29, T6S, R91W, 6th P.M.

PROPOSED
ACCESS ROAD
(EXISTING 2-TRACK
TO BE UPGRADED)

PREVAILING WIND



Swanson
SW 1/4 NE 1/4

B.L.M.
NW 1/4 NE 1/4

STA. 4+34

STA. 2+75

STA. 2+00

STA. 1+08

STA. 0+00

1/16 Section Line

B.L.M.
SE 1/4 NE 1/4

B.L.M.
NE 1/4 NE 1/4

NOTE:
The Topsoil, Pit Stockpile & Waste
Material areas are calculated as being
mounds containing 7,800 cubic yards of
dirt (a 10% fluff factor is included). The
mound areas are calculated with push
slopes of 2.5:1 & fall slopes of 2.5:1.

Swanson = 0.560 Acres
B.L.M. = 4.526 Acres
Total Disturbance = 5.086 Acres

SURVEYED BY: C.D.S.	DATE SURVEYED: 01-05-10
DRAWN BY: D.COX	DATE DRAWN: 05-20-08
SCALE: 1" = 100'	REVISED: F.T.M. 01-19-10

Tri State

Land Surveying, Inc.

180 NORTH VERNAL AVE. VERNAL, UTAH 84078

(435) 781-2501

SHEET

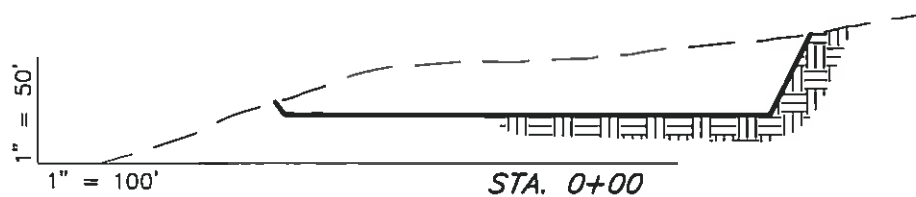
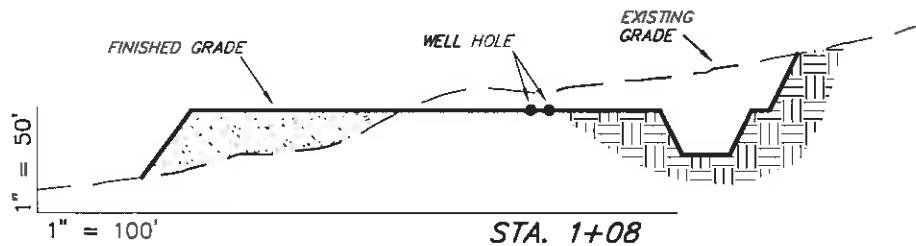
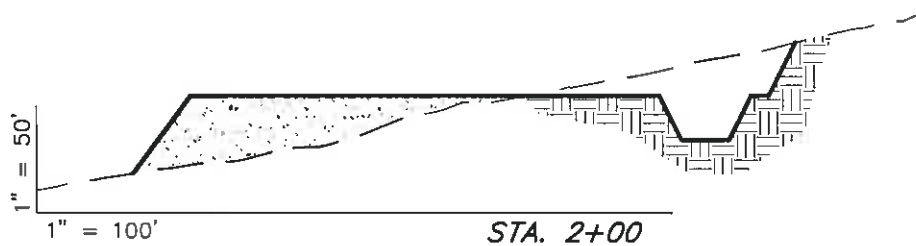
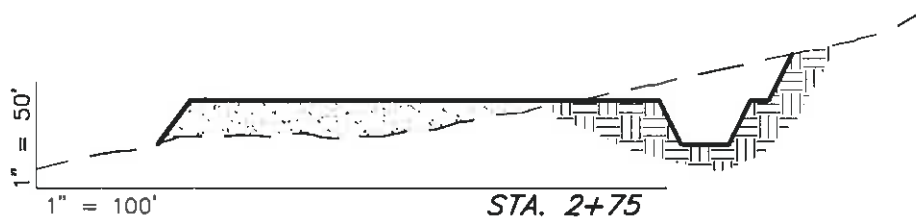
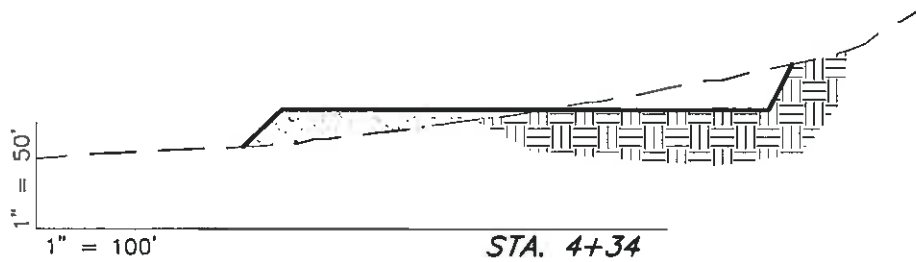
4

OF 12

BILL BARRETT CORP.

CROSS SECTIONS

WELL PAD: (MDP PAD #11)
Section 29, T6S, R91W, 6th P.M.



NOTE:
UNLESS OTHERWISE NOTED CUT SLOPES ARE AT 1:1 FILL SLOPES ARE AT 1.5:1

SURFACE DISTURBANCE AREA	SECTION 29, T6S, R91W, 6th P.M.
WELL SITE & PRODUCTION FACILITY	±5.086 ACRES
TOTAL DISTURBANCE	±5.086 ACRES
PROPOSED ACCESS ROAD DISTANCES	SECTION 29, T6S, R91W, 6th P.M.
PROPOSED PAD. ACCESS ROAD (NEW CONST.)	±825'
TOTAL DISTANCE	±825'

ESTIMATED EARTHWORK QUANTITIES (No Shrink or swell adjustments have been used) (Expressed in Cubic Yards)				
ITEM	CUT	FILL	6" TOPSOIL	EXCESS
PITS	4,200	0	Topsoil is not included in Pad Cut	4,200
PAD	21,290	21,290	2,890	0
TOTALS	25,490	21,290	2,890	4,200

SURVEYED BY: C.D.S. DATE SURVEYED: 01-05-10
DRAWN BY: D.COX DATE DRAWN: 05-20-08
SCALE: 1" = 100' REVISED: F.T.M. 01-19-10

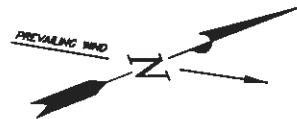
Tri State (435) 781-2501
Land Surveying, Inc.
180 NORTH VERNAL AVE. VERNAL, UTAH 84078

SHEET
5
OF 12

BILL BARRETT CORP.

TYPICAL RIG LAYOUT

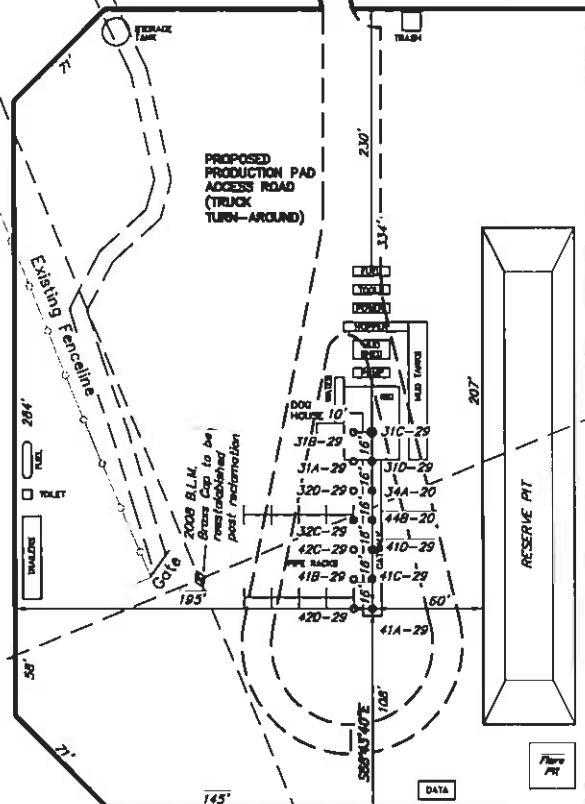
WELL PAD: (MDP PAD #11)
Section 29, T6S, R91W, 6th P.M.



PROPOSED
ACCESS ROAD
(EXISTING 2-TRACK
TO BE UPGRADED)

Swanson
SW 1/4 NE 1/4

B.L.M.
NW 1/4 NE 1/4



CLASS. PIT NOTE:
Maintain 100' min.
Distance from The
Proposed Well Heads.

B.L.M.
SE 1/4 NE 1/4

B.L.M.
NE 1/4 NE 1/4

NOTE:
The Topsoil, Pit Stockpile & Waste
Material areas are calculated as being
mounds containing 7,800 cubic yards of
dirt (a 10% fluff factor is included). The
mound areas are calculated with push
slopes of 2.5:1 & fall slopes of 2.5:1.

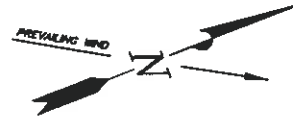
SURVEYED BY: C.D.S.	DATE SURVEYED: 01-05-10
DRAWN BY: D.COX	DATE DRAWN: 05-20-08
SCALE: 1" = 100'	REVISED: F.T.M. 01-19-10

Tri State
Land Surveying, Inc.
(435) 781-2501
180 NORTH VERNAL AVE. VERNAL, UTAH 84078

SHEET
6
OF 12

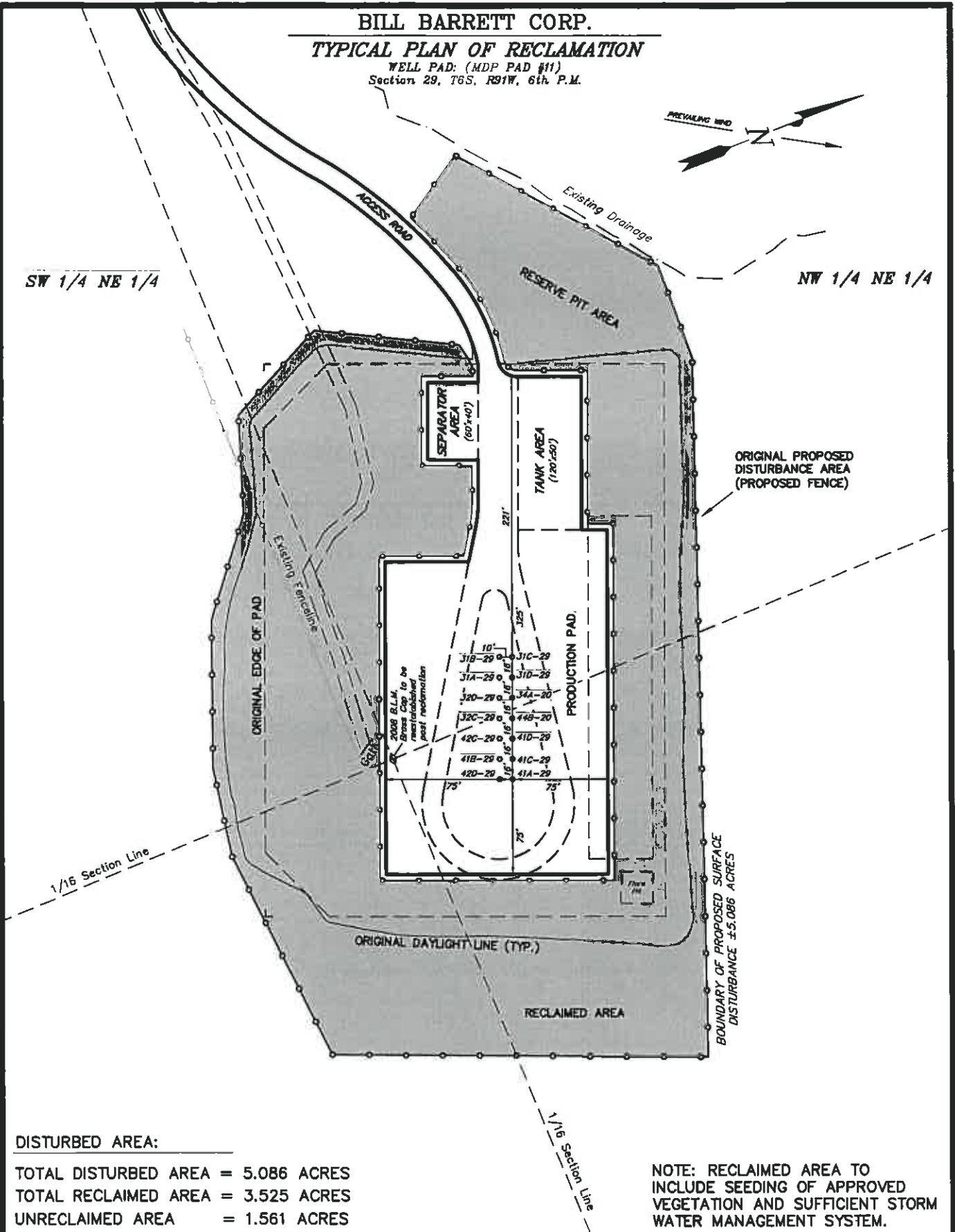
BILL BARRETT CORP.
TYPICAL PLAN OF RECLAMATION

WELL PAD: (MDP PAD #11)
 Section 29, T6S, R91W, 6th P.M.



SW 1/4 NE 1/4

NW 1/4 NE 1/4



DISTURBED AREA:

TOTAL DISTURBED AREA = 5.086 ACRES
 TOTAL RECLAIMED AREA = 3.525 ACRES
 UNRECLAIMED AREA = 1.561 ACRES

NOTE: RECLAIMED AREA TO INCLUDE SEEDING OF APPROVED VEGETATION AND SUFFICIENT STORM WATER MANAGEMENT SYSTEM.

SURVEYED BY: C.D.S.	DATE SURVEYED: 01-05-10
DRAWN BY: D.COX	DATE DRAWN: 06-04-08
SCALE: 1" = 100'	REVISED: F.T.M. 01-19-10

Tri State
 Land Surveying, Inc.
 180 NORTH VERNAL AVE. VERNAL, UTAH 84078
 (435) 781-2501

SHEET
 7
 OF 12

BILL BARRETT CORP.

SURFACE DISTURBANCE AREA

WELL PAD: (MDP PAD #11)
Section 29, T6S, R91W, 6th P.M.

1/16 Section Line

B.L.M. (U.S.A.)
NW 1/4 NE 1/4

(From the North 1/4
Corner of Section 29)
S41°01'25"E 1420.75'

B.L.M. (U.S.A.)
NE 1/4 NE 1/4

BOUNDARY OF PROPOSED
SURFACE DISTURBANCE
± 4.864 ACRES

RESERVE PIT

TOPSOIL
STOCKPILE

2008 B.L.M. Brass Cap
to be reestablished
post reclamation

EXCESS MATERIAL

1/16 Section Line

B.L.M. (U.S.A.)
SE 1/4 NE 1/4

Swanson
SW 1/4 NE 1/4

Surface Disturbance Area		
SURFACE OWNERSHIP	TOTAL	
SECTION 29 - B.L.M.	4.525 Acres	
SECTION 29 - SWANSON	0.561 Acres	
TOTAL PAD DISTURBANCE	5.086 Acres	

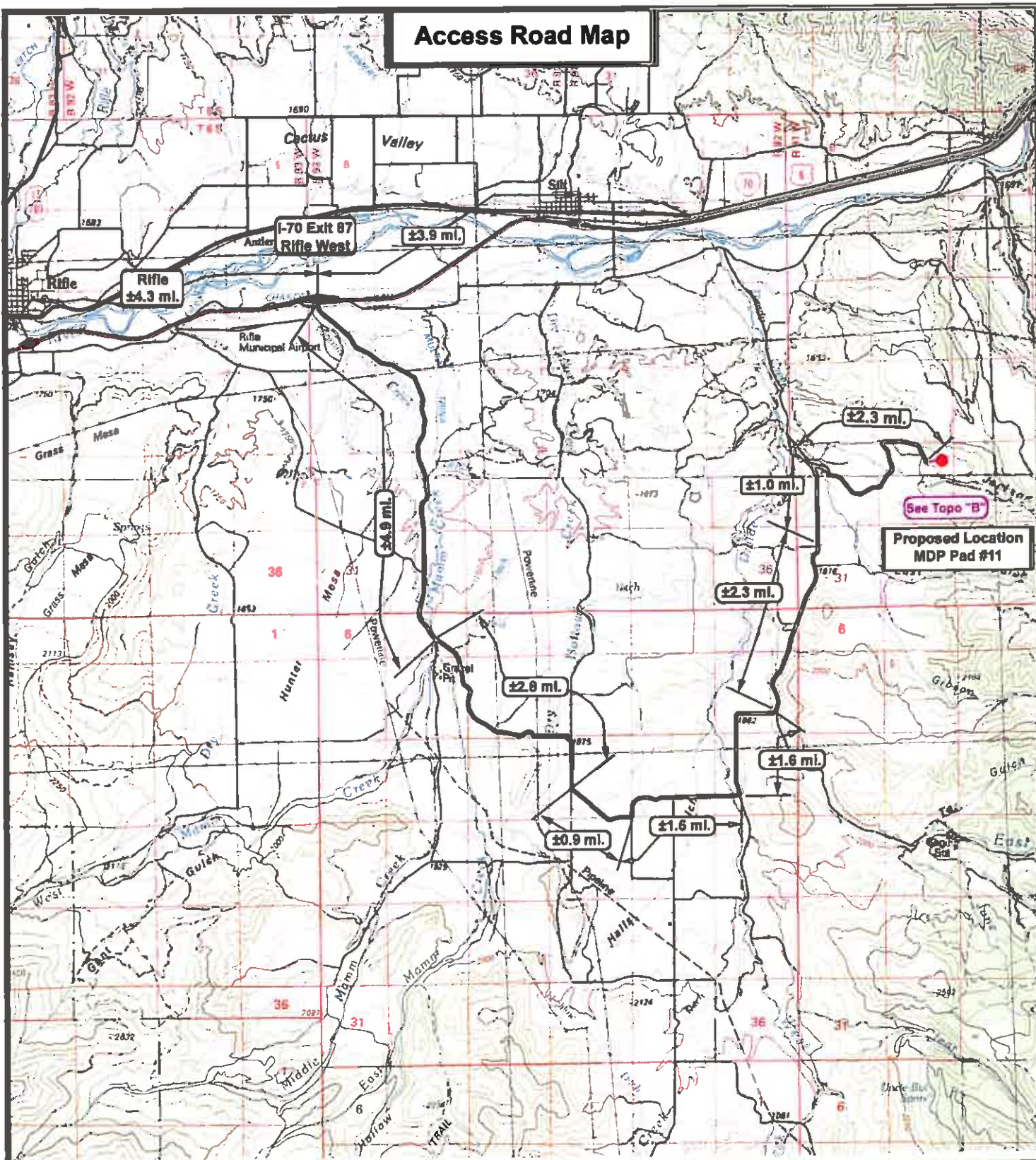
Property Line (Typ.)

BASIS OF BEARINGS NOTE:
BASIS OF BEARINGS IS THE SOUTH LINE OF
THE SW 1/4 OF SECTION 29, T6S, R91W,
6TH P.M. WHICH IS TAKEN FROM G.P.S.
OBSERVATIONS TO BEAR S88°43'23"W A
MEASURED DISTANCE OF 2652.08'

SURVEYED BY: C.D.S.	DATE SURVEYED: 01-05-10
DRAWN BY: F.T.M.	DATE DRAWN: 01-19-10
SCALE: 1" = 100'	REVISED:

Tri State
Land Surveying, Inc.
180 NORTH VERNAL AVE.
VERNAL, UTAH 84078

Access Road Map



MDP Pad #11
SEC. 29, T6S, R91W, 6th P.M.



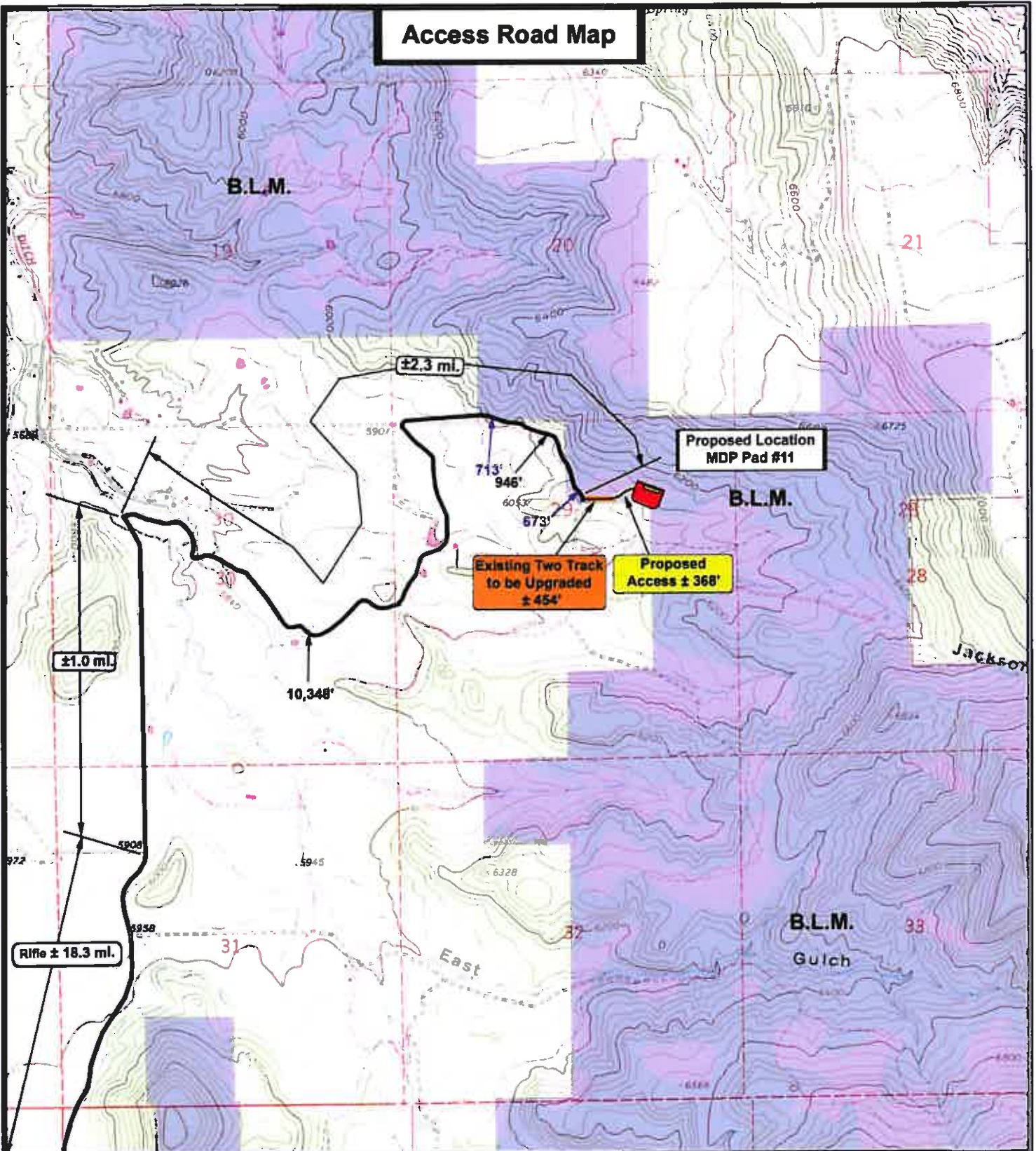
Tri-State
Land Surveying Inc.
 (435) 781-2501
 180 North Vernal Ave. Vernal, Utah 84078

SCALE: 1 = 100,000
DRAWN BY: JAS
DATE: 10-11-2009

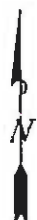
Legend
 Existing Road
 Proposed Access

TOPOGRAPHIC MAP
"A"
SHEET 9 OF 12

Access Road Map



MDP Pad #11
SEC. 29, T6S, R91W, 6th P.M.



Tri-State
Land Surveying Inc.
 (435) 781-2501
 180 North Vernal Ave. Vernal, Utah 84078

SCALE: 1" = 2,000'

DRAWN BY: JAS

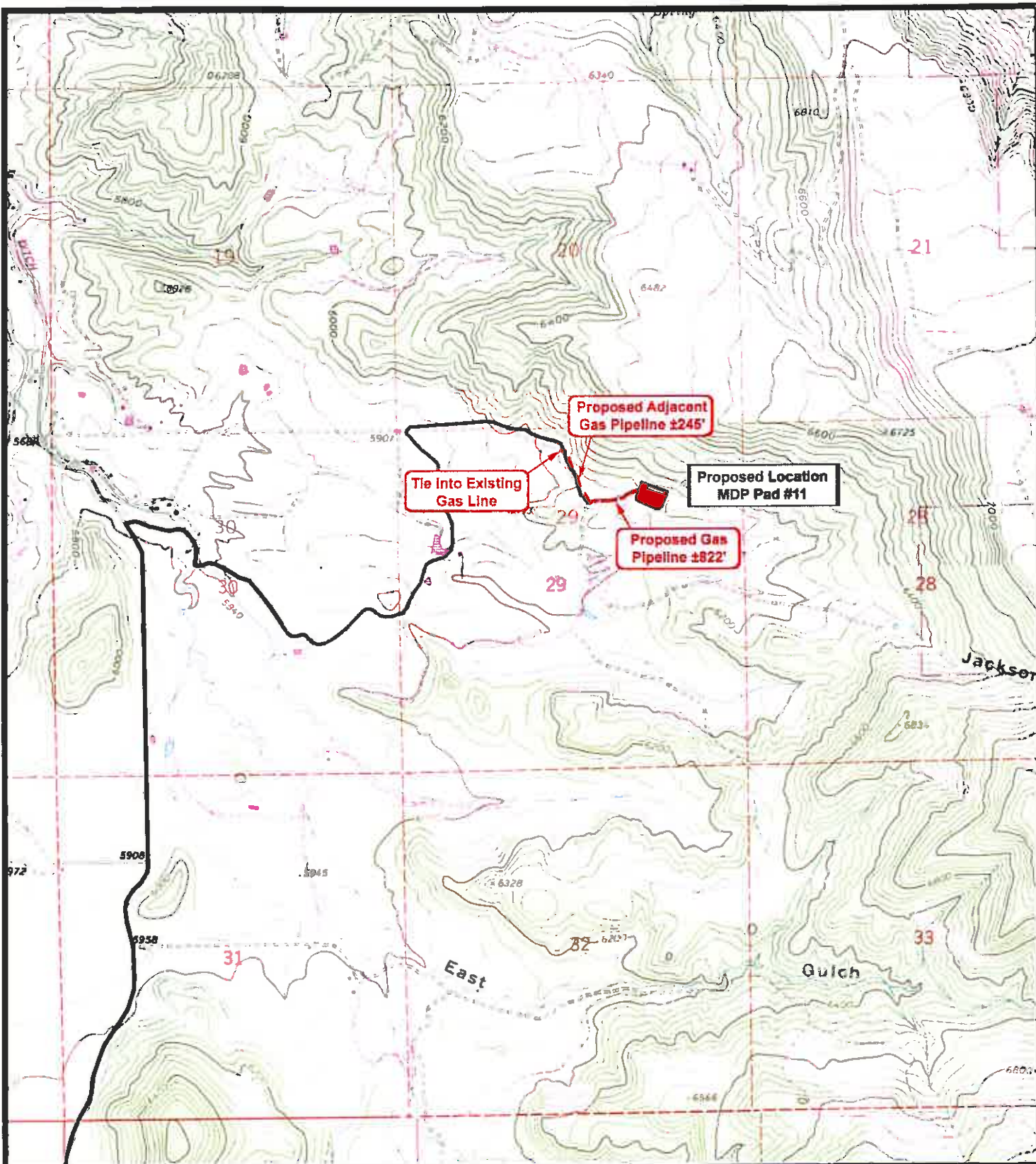
DATE: 12-30-2009

Legend	
	Existing Road
	Proposed Access
	Existing Two-Track

TOPOGRAPHIC MAP

"B"

SHEET
10
 OF 12



MDP Pad #11
SEC. 29, T6S, R91W, 6th P.M.



Tri-State
Land Surveying Inc.
 (435) 781-2501
 180 North Vernal Ave. Vernal, Utah 84078

SCALE: 1" = 2,000'

DRAWN BY: JAS

DATE: 06-09-2010

Legend

— Roads
 - - - - - Proposed Gas Line

TOPOGRAPHIC MAP

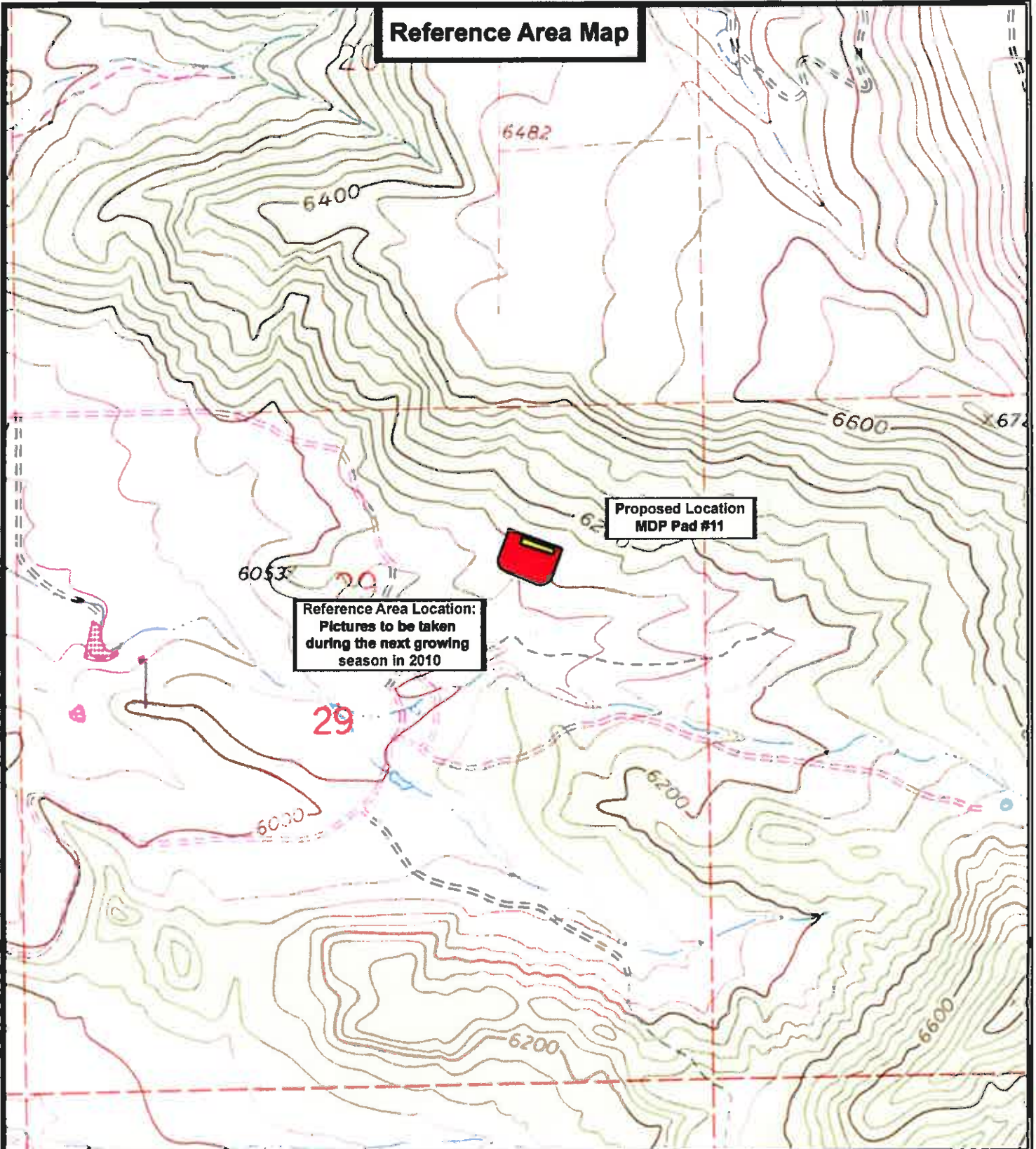
"D"

SHEET

11

OF 12

Reference Area Map



MDP Pad #11
SEC. 29, T6S, R91W, 6th P.M.



Tri-State
Land Surveying Inc.
(435) 781-2501
180 North Vernal Ave. Vernal, Utah 84078

SCALE: 1" = 2,000'
DRAWN BY: JAS
DATE: 10-11-2009

Legend

TOPOGRAPHIC MAP

SHEET
12
OF 12

Location Photos

Center Stake

Date Photographed: 01/05/2010

Photographed By: D. Slauch

NAD 83 - Decimal Degrees

Latitude : 39.502827

Longitude : 107.573161



Access

Date Photographed: 01/05/2010

Photographed By: D. Slauch

NAD 83 - Decimal Degrees

Latitude : 39.502669

Longitude : 107.577078



MDP Pad #11
SEC. 29, T6S, R91W, 6th P.M.

Tri-State
Land Surveying Inc.
(435) 781-2501
180 North Vernal Ave. Vernal, Utah 84078

DRAWN BY: JAS

DATE: 01/08/2010

Location

**Garfield County,
Colorado**

COLOR
PHOTOGRAPHS

SHEET
P1
OF 6

Location Photos

North

Date Photographed: 01/08/2010

Photographed By: D. Slauch

NAD 83 - Decimal Degrees

Latitude : 39.502762

Longitude : 107.573151



East

Date Photographed: 01/08/2010

Photographed By: D. Slauch

NAD 83 - Decimal Degrees

Latitude : 39.502807

Longitude : 107.573274



MDP Pad #11
SEC. 29, T6S, R91W, 6th P.M.

Tri-State
Land Surveying Inc.
(435) 781-2501
180 North Vernal Ave. Vernal, Utah 84078

DRAWN BY: JAS

DATE: 01/09/2010

Location

**Garfield County,
Colorado**

COLOR
PHOTOGRAPHS

SHEET
P2
OF 5

Location Photos

South

Date Photographed: 01/05/2010

Photographed By: D. Slauch

NAD 83 - Decimal Degrees

Latitude : 39.502928

Longitude : 107.573138



West

Date Photographed: 01/05/2010

Photographed By: D. Slauch

NAD 83 - Decimal Degrees

Latitude : 39.502820

Longitude : 107.573020



MDP Pad #11
SEC. 29, T6S, R91W, 6th P.M.

Tri-State
Land Surveying Inc.
(435) 781-2501
160 North Vernal Ave. Vernal, Utah 84078

DRAWN BY: JAS
DATE: 01/08/2010

Location

**Garfield County,
Colorado**

COLOR
PHOTOGRAPHS

SHEET
P3
OF 6

Bill Barret Corp.
Driving Directions to MDP Pad #11
Section 29, T6S, R91W, 6th P.M.

From the I-70 Exit #87 (Rifle West) Proceed southeasterly thence southerly along the frontage road approximately 4.9 miles to an intersection to the east. Turn left and proceed southeasterly; thence southerly approximately 2.8 miles to the intersection of this road and an existing road to the east. Turn left Proceed southeasterly approximately 0.9 miles to the intersection of this road and an existing road to the north. Turn left and proceed northerly; thence easterly approximately 1.5 miles to an existing road the north. Turn left and proceed northerly; thence easterly approximately 1.6 miles to the intersection of this road and an existing road to the north. Turn left and proceed northeasterly approximately 2.3 miles the junction of this road and an existing road to the north. Continue northerly approximately 1.0 miles to the intersection of this road and an existing road to the east. Turn right and proceed southeasterly; thence northeasterly; thence easterly approximately 2.0 miles or $\pm 10,348'$ to B.L.M. property; thence continue easterly across B.L.M. property approximately 0.1 miles or $\pm 713'$ to the end of B.L.M. property; thence leaving B.L.M. property continue easterly approximately 0.2 miles or $\pm 946'$ to B.L.M. property; thence continue southeasterly across B.L.M. property approximately 0.1 miles or $\pm 673'$ to the intersection of this road and an existing two track to be upgraded. Turn left and proceed easterly across B.L.M. property $\pm 454'$ to the proposed access for the proposed well pad for the MDP Pad #11. Turn left and proceed northeasterly across B.L.M. property $\pm 368'$ to the proposed well pad for the MDP Pad #11.

MDP Pad 11 Lease Boundary Map

CO 10276

T. 6 S., R. 91 W. 6th P.M.
Sec. 29; N2SW, SWNE, NWSE
160 Acres

CO 10328

T. 6 S., R. 91 W. 6th P.M.
Sec. 7; NESE, W2SW, SESW,
SWSE
Sec. 9; W2W2, SESW
Sec. 16; N2NW, SWNW, N2SW,
SESW
Sec. 20; N2NE, SENE, NENW, E2SE
Sec. 21; W2SW, NENW, NWNE
1,200 Acres

USA COC 46972

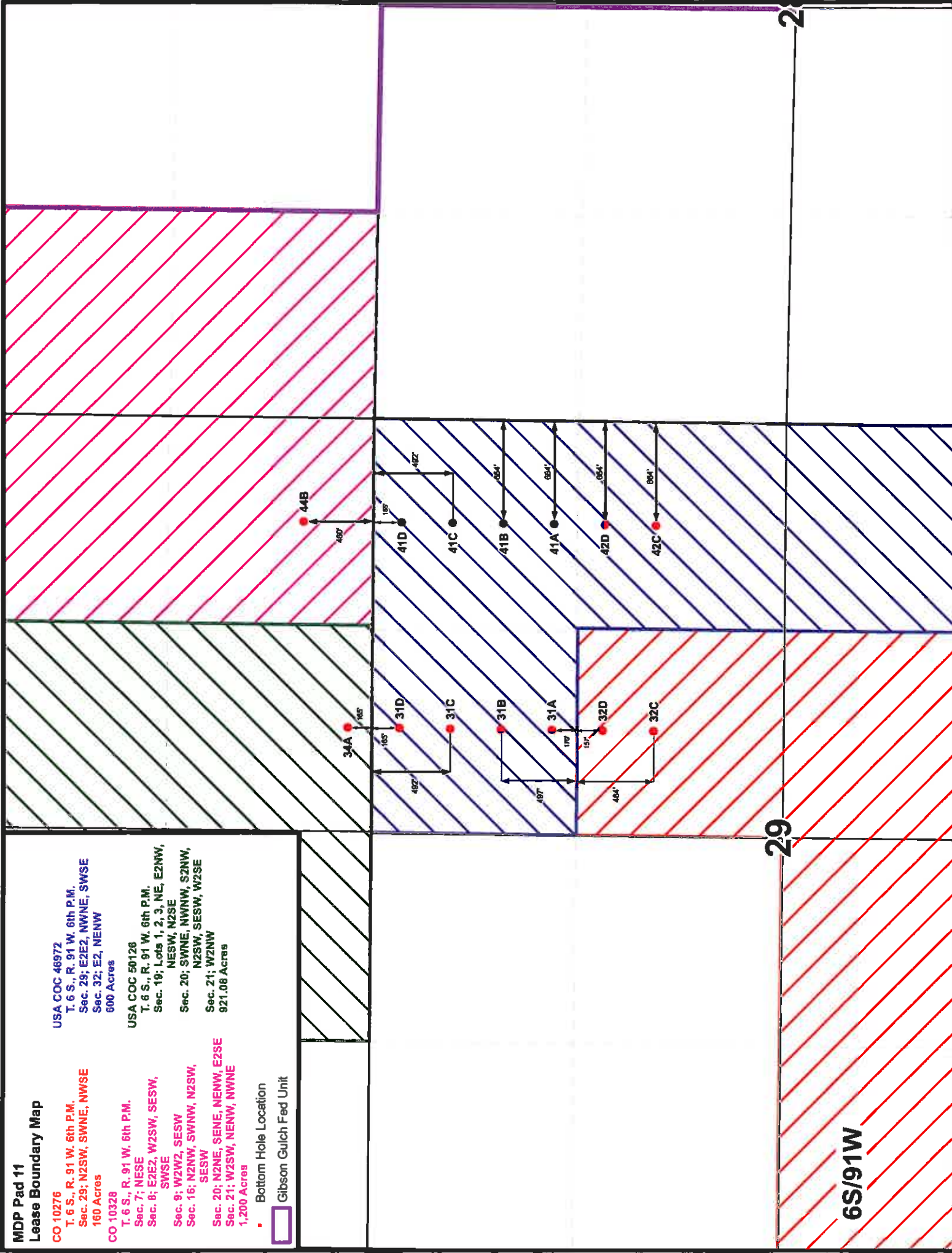
T. 6 S., R. 91 W. 6th P.M.
Sec. 29; E2E2, NWNE, SWSE
Sec. 32; E2, NENW
900 Acres

USA COC 50126

T. 6 S., R. 91 W. 6th P.M.
Sec. 19; Lots 1, 2, 3, NE, E2NW,
NESW, N2SE
Sec. 20; SWNE, MNW, S2NW,
Sec. 21; W2NW
921.08 Acres

Bottom Hole Location

Gibson Gulch Fed Unit



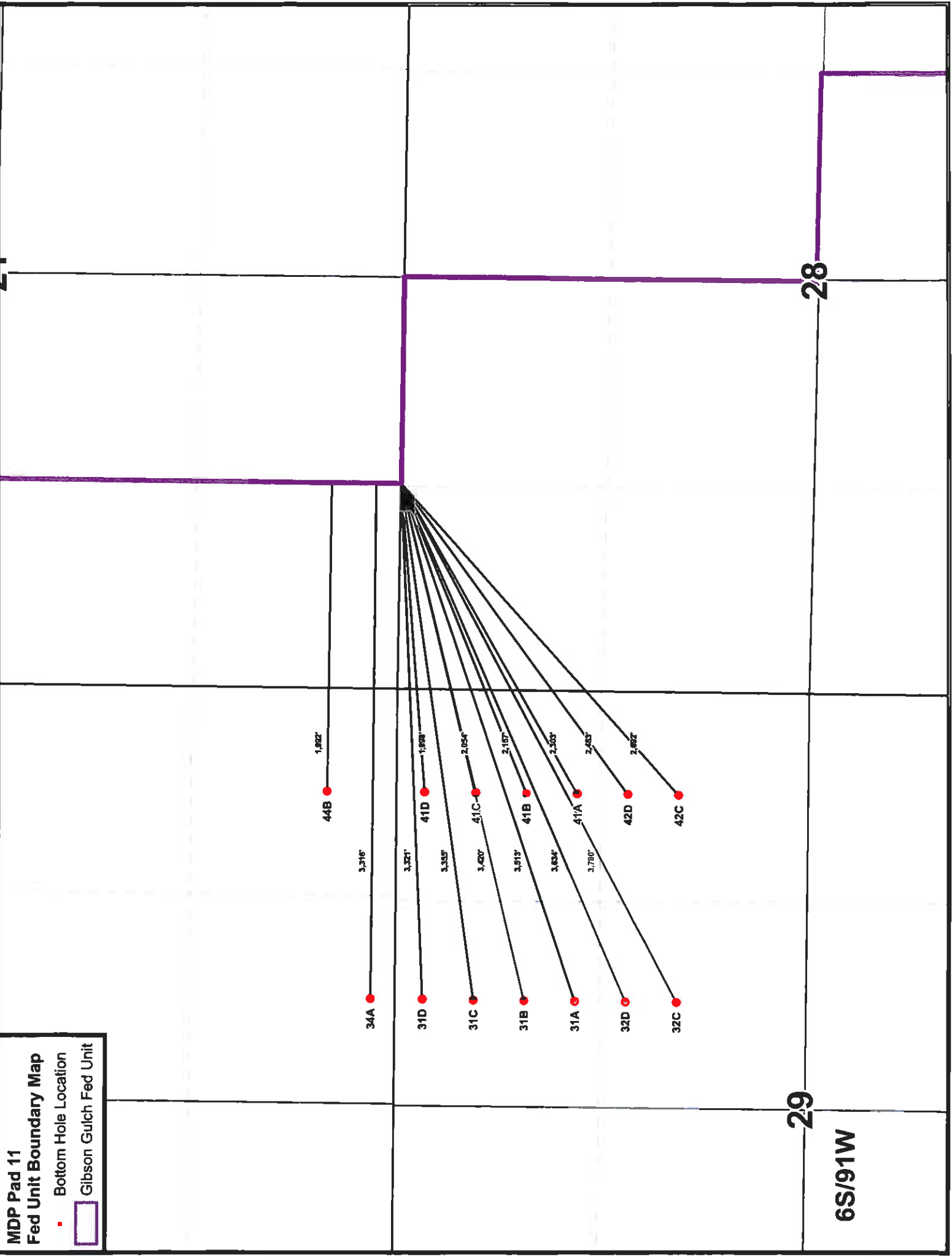
6S/91W

29

29

MDP Pad 11
Fed Unit Boundary Map

- Bottom Hole Location
- Gibson Gulch Fed Unit



6S/91W

19

20

21

30

29

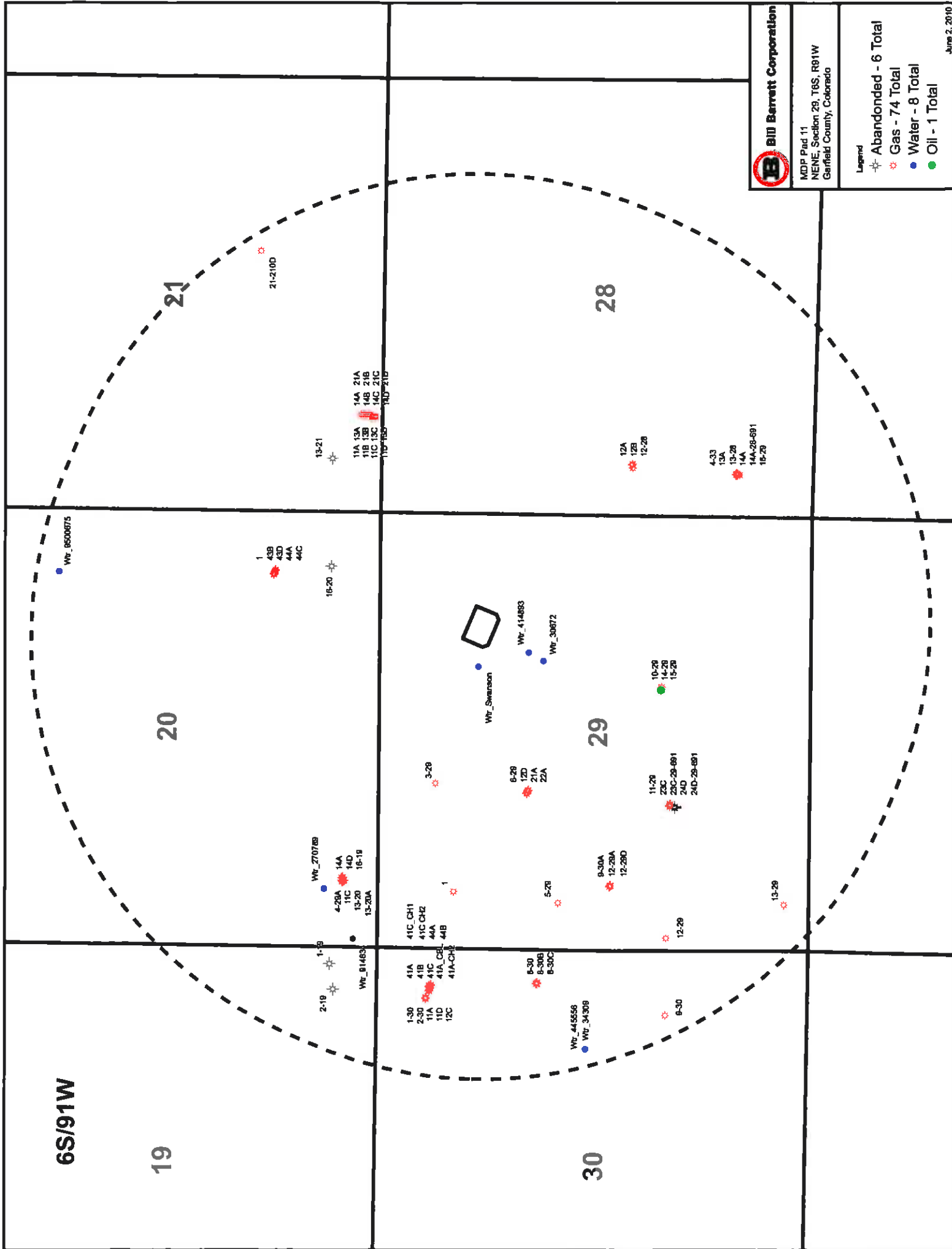
28



MDP Pad 11
NENE, Section 28, T6S, R91W
Garfield County, Colorado

Legend
✱ Abandoned - 6 Total
✱ Gas - 74 Total
● Water - 8 Total
● Oil - 1 Total

June 2, 2010



SURFACE USE PLAN

BILL BARRETT CORPORATION

MDP Pad #11

Garfield County, CO

<u>GGU Federal 41A-29-691</u> NENE, 1236' FNL, 1279' FEL, Sec. 29, T6S-R91W (surface hole) NENE, 1146' FNL, 664' FEL, Sec. 29, T6S-R91W (bottom hole)	<u>GGU Federal 42D-29-691</u> NENE, 1246' FNL, 1282' FEL, Sec. 29, T6S-R91W (surface hole) SENE, 1473' FNL, 664' FEL, Sec. 29, T6S-R91W (bottom hole)
<u>GGU Federal 41C-29-691</u> NENE, 1230' FNL, 1293' FEL, Sec. 29, T6S-R91W (surface hole) NENE, 492' FNL, 664' FEL, Sec. 29, T6S-R91W (bottom hole)	<u>GGU Federal 41B-29-691</u> NENE, 1240' FNL, 1367' FEL, Sec. 29, T6S-R91W (surface hole) NENE, 819' FNL, 664' FEL, Sec. 29, T6S-R91W (bottom hole)
<u>GGU Federal 41D-29-691</u> NENE, 1224' FNL, 1308' FEL, Sec. 29, T6S-R91W (surface hole) NENE, 165' FNL, 664' FEL, Sec. 29, T6S-R91W (bottom hole)	<u>GGU Federal 42C-29-691</u> NENE, 1234' FNL, 1312' FEL, Sec. 29, T6S-R91W (surface hole) SENE, 1800' FNL, 664' FEL, Sec. 29, T6S-R91W (bottom hole)
<u>GGU Jolley 44B-20-691</u> NENE, 1218' FNL, 1323' FEL, Sec. 29, T6S-R91W (surface hole) SESE, 460' FSL, 666' FEL, Sec. 20, T6S-R91W (bottom hole)	<u>GGU Swanson 32C-29-691</u> NENE, 1227' FNL, 1327' FEL, Sec. 29, T6S-R91W (surface hole) SWNE, 1800' FNL, 1990' FEL, Sec. 29, T6S-R91W (bottom hole)
<u>GGU Federal 34A-20-691</u> NWNE, 1212' FNL, 1338' FEL, Sec. 29, T6S-R91W (surface hole) SWSE, 165' FSL, 1990' FEL, Sec. 20, T6S-R91W (bottom hole)	<u>GGU Swanson 32D-29-691</u> NWNE, 1221' FNL, 1342' FEL, Sec. 29, T6S-R91W (surface hole) SWNE, 1473' FNL, 1990' FEL, Sec. 29, T6S-R91W (bottom hole)
<u>GGU Federal 31D-29-691</u> NWNE, 1206' FNL, 1353' FEL, Sec. 29, T6S-R91W (surface hole) NWNE, 165' FNL, 1990' FEL, Sec. 29, T6S-R91W (bottom hole)	<u>GGU Federal 31A-29-691</u> NWNE, 1215' FNL, 1356' FEL, Sec. 29, T6S-R91W (surface hole) NWNE, 1146' FNL, 1990' FEL, Sec. 29, T6S-R91W (bottom hole)
<u>GGU Federal 31C-29-691</u> NWNE, 1200' FNL, 1367' FEL, Sec. 29, T6S-R91W (surface hole) NWNE, 492' FNL, 1990' FEL, Sec. 29, T6S-R91W (bottom hole)	<u>GGU Federal 31B-29-691</u> NWNE, 1209' FNL, 1371' FEL, Sec. 29, T6S-R91W (surface hole) NWNE, 819' FNL, 1990' FEL, Sec. 29, T6S-R91W (bottom hole)

The final onsite for this well pad occurred on October 1, 2008. The proposed well pad is located on federal surface under the management of the BLM – White River Field Office with a total of fourteen (14) proposed directional wells. Three (3) of the wells are proposed within private leases (Swanson and Jolley) and one (1) proposed within COC-50126 (federal) and ten (10) proposed within COC-46972 (federal)

This is a new pad with all fourteen (14) wells to be drilled in mid 2010.

The excavation contractor would be provided with a copy of the approved Surface Use Plan before initiating construction.

1. Existing Roads:

- A. The proposed well pad is located approximately 23 miles southeast of Rifle, CO. Maps and an access road description to the proposed well pad are included (see Topographic Maps A, B, and Access Road Description sheet).
- B. The use of roads under State and County Road Department maintenance are necessary to access the well pad. However, an encroachment permit is not anticipated as there are no upgrades to these road systems proposed at this time.
- C. No topsoil stripping would occur as there are no improvements proposed to existing State or County access roads.

- D. From the County Road surface, existing previously approved Gibson Gulch Unit access roads under the maintenance of BBC would be utilized to the pad.
- E. All existing roads would be maintained and kept in good repair during all phases of operation. BBC would coordinate with the necessary owners/agencies to ensure maintenance of the access roads.
- F. Vehicle operators would obey posted speed restrictions and observe safe speeds commensurate with road and weather conditions. Additional signs may be posted, as necessary, to warn the public of project related traffic. Travel would be limited to the existing access roads and proposed access road.

2. Planned Access Road:

- A. From the existing BBC maintained access road in the NW/4 NE/4 of Sec. 29, T6S, R91W, 6th P.M. an access road upgrade is proposed traversing 454' (0.09 miles) east across federal surface to a point where new access will begin. The new access road is proposed traversing 368' (0.07 miles) east across federal surface from the access road upgrade to the proposed well site (see attached Topographic Map "B"). The proposed road upgrade and new access road are both on lease and within the federal unit.
- B. The upgrade and new road segments would be constructed and maintained to accommodate drilling and completion equipment access in a safe manner. ROW width requested for all proposed road would be 32 feet, with a typical running surface varying between 22 – 24 feet. A maximum grade of 10% would be maintained and any additional drainage structures, where necessary, would be incorporated to prevent soil erosion and accommodate all-weather traffic. Following completion of all wells on the pad, the temporary disturbance area would be reclaimed according to BLM or private landowner specifications.
- C. Access road construction would typically require a D6 or larger crawler tractor, a D12 or larger motor grader, a Class 12R or larger track hoe, a mid-sized backhoe, two to four 10-yard dump trucks, and possibly a Class 988 loader. Road construction/improvement would include clearing and grubbing of brush and trees, windrowing of topsoil, construction of reinforced rolling dips and grade dips where feasible, installation of culverts in ditched sections and side drainages to provide ditch relief and sediment control, construction of retaining structures on steep slopes (as approved by the BLM), placement of slash and topsoil on cut and fill slopes, placement of erosion and sediment controls on cut and fill slopes as approved by the BLM, seeding of all disturbed areas outside of the travel way, and installation of cattle guards and road closure gates where needed. Topsoil would be stripped and stockpiled during road construction and re-spread to the greatest degree practical on cut slopes, fill slopes, and borrow ditches prior to seeding.
- D. No surfacing material would come from Indian lands or off-lease Federal lands. BBC requests that any excess rock from construction of the pad be used for surfacing of the proposed access road, if necessary. Any additional materials needed would be purchased from a private source and be properly permitted with the State of Colorado.
- E. Surface disturbance and vehicular travel would be limited to the approved location access road. Adequate signs would be posted, as necessary, to warn the public of project related traffic.

- F. All access roads and surface disturbing activities would conform to the appropriate standard, no higher than necessary, to accommodate their intended function adequately as outlined in the Bureau of Land Management and Forest Service publication: Surface Operating Standards for Oil and Gas Exploration and Development, Fourth Edition – Revised 2007.
- G. The access roads would be inspected by the BLM and, if necessary, maintained by BBC on an as needed or quarterly basis (at a minimum).

3. Location of Existing Wells:

- A. Following is a list of existing wells within a one-mile radius of the proposed well (see enclosed One-Mile Radius Map):

i.	water wells	8
ii.	injection wells	none
iii.	disposal wells	none
iv.	drilling wells	none
v.	temp shut-in wells	none
vi.	producing wells	75
vii.	abandoned wells	6
viii.	wells drilled; w/o completion	none

4. Location of Production Facilities:

- A. Facilities for this pad (see Sheet 7) may be shared by individual wells drilled from this pad. Surface facilities would consist of wellheads, separation units, gas metering units, fugitive emission combusters, radio antennas, solar panel brackets, chemical storage containers less than 500 gallons in capacity and above-ground condensate and produced water tanks with approximately 300 to 500-barrel capacities each. Telemetry equipment may be used where feasible to remotely monitor well conditions.
- B. An off-site facility pad is not proposed with this application. Tank batteries would be placed on the pad within secondary containment to prevent the off-site migration of accidentally-spilled condensate or produced water. Secondary containment would consist of corrugated steel containment rings. Construction of the containment rings surrounding the tank batteries would be constructed to prevent lateral movement of fluids through an impermeable barrier attached to the rings and laid under the tanks. Secondary containment would be sized to contain a minimum of 110 percent of the storage capacity of the single largest tank within the barrier. All loading lines would be placed inside the containment barrier or would have secondary containment vessels. All liquid hydrocarbon production and measurement shall conform to the provisions of 43 CFR 3162.7-2 and Onshore Oil and Gas Order No. 4 for the measurement of oil.
- C. All permanent above-ground structures would be painted a flat, non-reflective Olive Black color to match the standard environment and would be painted the designated color at the time of installation. Facilities required to comply with the Occupational Safety and Health Act (OSHA) may be excluded.
- D. Site security guidelines identified in 43 CFR 3163.7-5 and Onshore Oil and Gas Order No. 3 would be adhered to.

- E. All gas production and measurement shall comply with the provisions of 43 CFR 3162.7-3, Onshore Oil and Gas Order No. 5, and American Gas Association (AGA) Report No. 3.
 - F. A tank battery will be constructed on this lease. It will be surrounded by a dike of sufficient capacity to contain 1.5 times the storage capacity of the largest tank. All loading lines and valves will be placed inside the berm surrounding the tank battery or will have a secondary containment vessel. All liquid hydrocarbon production and measurement shall conform to the provisions of 43 CFR 3162.7-2 and Onshore Oil and Gas Order No. 4 for the measurement of oil. BBC requests permission to install the necessary production/operation facilities with this application
 - G. Any necessary pits would be properly fenced to prevent any wildlife and livestock entry.
 - H. The pad area and access road would require periodic maintenance to ensure that drainages are kept open and free of debris, ice and snow, and that surfaces are properly treated to reduce erosion, fugitive dust, and impacts to adjacent areas.
 - I. Bill Barrett Corporation (BBC) proposes to construct a new pipeline corridor containing up to three buried pipelines; 1) one (up to 12-inch diameter) steel low-pressure natural gas gathering pipeline, 2) one (up to 10-inch diameter) HDPE (SDR 17) produced water gathering pipeline, and 3) one (up to 6-inch diameter) steel industrial water pipeline and associated infrastructure and an adjacent gas pipeline next to an existing gas corridor containing the same infrastructure (i.e., up to three buried pipelines).
 - J. The 822' (0.15 mile) of new pipeline corridor across federal surface would traverse from the well pad west to an existing pipeline. The 245' (0.05 mile) of new pipeline adjacent to an existing pipeline corridor would traverse northwesterly across federal surface to a tie-in location on fee surface within the NW/4 NE/4 of Sec. 29, T6S, R91W, 6th P.M.. The 50' wide corridor will parallel the proposed and existing access corridors and consist of 1.2 acres of disturbance. (see attached Topographic Map "D").
5. Location and Type of Water Supply:
- A. Bill Barrett Corporation would utilize water from private landowners. If an alternate source is located, a Sundry Notice would be filed indicating the new source of water.
6. Source of Construction Material:
- A. The use of materials would conform to 43 CFR 3610.2-3.
 - B. No construction materials would be removed from BLM.
 - C. If any gravel is used, it would be obtained from a State approved gravel pit.

- I. If air drilling occurs, the blooie line would be located at least 100 feet from the individual wellhead and would run from each wellhead directly to the pit. .
 - J. Water application may be implemented if necessary to minimize the amount of fugitive dust.
10. Plan for Restoration of the Surface:

Producing Wells

- A. Rat and mouse holes would be filled and compacted from bottom to top immediately upon release of the drilling rig from location.
- B. The reserve pit would be closed as soon as reasonably practical, but no later than 90 days from completion of the last well on the pad, provided favorable weather conditions and that there are no plans to re-use the pit within one year. An extension may be given at the discretion of the BLM Authorized Officer. The following are requirements for pit closures:
 - Squeezing of pit fluids and cuttings is prohibited;
 - Pits must be dry of fluids or they must be removed via vac-truck or other environmentally acceptable method prior to backfilling, re-contouring and replacement of topsoil;
 - Mud and cuttings left in pit must be buried at least 3-feet below re-co-contoured grad;
 - The polyethylene nylon reinforced liner shall be torn and perforated before backfilling;
 - The operator would be responsible for re-contouring any subsidence areas that develop from closing a pit before it is sufficiently dry;
 - The operator shall contact the BLM Authorized Officer at least 48-hours prior to the filling and reclamation of pits and the start of any reclamation such as re-contouring and reseeding.
- C. Reclamation requirements: Prior to reseeding the site, all disturbed areas, including the access road, would be scarified and left with a rough surface. The site would then be seeded and/or planted as prescribed by the BLM. The BLM recommended seed mix would be detailed within their surface use agreement.
- D. The operator would control noxious weeds along access road use authorizations, pipeline route authorizations, well sites or other applicable facilities by spraying or mechanical removal. A list of noxious weeds may be obtained from the BLM or the appropriate county extension office.

Dry Hole

- A. All disturbed lands associated with this project, including the pipelines, access roads, water management facilities, etc., would be expediently reclaimed and reseeded in accordance with the reclamation plan and any pertinent site specific COAs.

11. Surface and Mineral Ownership:

- A. Surface ownership – Federal under the management of the Bureau of Land Management
- B. Mineral ownership – Federal under the management of the Bureau of Land Management

12. Other Information:

- a. Grand River Institute (GRI) has previously conducted a Class III archeological survey on the federal lands associated with the project. A copy of the report has been submitted under separate cover to the appropriate agencies by GRI as Report No. 2010-16.
- b. A combustor may be installed at this location for control of associated condensate tank emissions. A combustor ranges from 24” to 48” wide and is approximately 10’ tall. Combustor placement would be on existing disturbance and would not be closer than 100’ to any tank or wellheads.

OPERATOR CERTIFICATION

Certification:

I hereby certify that I, or someone under my direction supervision, have inspected the drill site and access route proposed herein; that I am familiar with the conditions which currently exist; that I have full knowledge of state and Federal laws applicable to this operation; that the statements made in this APD package are, to the best of my knowledge, true and correct; and that the work associated with the operations proposed herein would be performed in conformity with this APD package and the terms and conditions under which it is approved. I also certify that I, or the company I represent, am responsible for the operations conducted under this application and that bond coverage is provided. These statements are subject to the provisions of 18 U.S.C. 1001 for the filings of false statements.

The operator must make a good faith effort to provide a copy of their Surface Use Plan of Operations to the surface owner. After the APD is approved the operator must make a good faith effort to provide a copy of the Conditions of Approval to the surface owner. The APD approval is not contingent upon delivery of a copy of the Conditions of Approval to the surface owner.

Executed this 10 day of June 2010
Name: Elaine Winick
Position Title: Senior Regulatory Analyst
Address: 1099 18th Street, Suite 2300, Denver, CO 80202
Telephone: 303-312-8134
Field Representative Monty Shed
Address: 112 Red Feather Trail, Silt, CO 81652
Telephone: 970-876-1959
E-mail: mshed@billbarrettcorp.com

Elaine Winick
Elaine Winick – Senior Regulatory Analyst



Surface Owner Map

MDP Pad 11
NENE, Section 29, T6S R91W
Garfield County, Colorado



0 75 150 300
Feet

Wells

- Proposed O&G SH Location
- (---) 500' Buffer

Legend

- Pad Disturbance
- Production Facility

