

FORM
6
Rev 12/05

State of Colorado
Oil and Gas Conservation Commissioner
1120 Lincoln Street, Suite 801, Denver Colorado 80203 (303) 894-2100 Fax (303) 894-2109

STATE OF COLORADO
OIL & GAS

DE
ET
OE
ES

RECEIVED
APR 30 2010
COGCC

01716860

Submit original plus one copy. This form is to be submitted as an intent whenever a borehole. The approved intent shall be valid for twelve months after the approval date and a new intent will be required. After the plugging is complete, this form and one copy shall again be submitted as a subsequent report of the work as actually completed.

COGCC Operator Number: 97810
Name of Operator: Yates Petroleum Corporation
Address: 105 South Fourth Street
City: Artesia State: NM Zip: 882120

Contact Name & Telephone
Allison Barton
No: (575) 748-1471
Fax: (575) 748-4585

24 hour notice required, contact:
Tel:

API Number 05-081-07206
Well Name: Kaline State Com Well Number: 14
Location (QtrQtr, Sec, Twp, Rng, Meridian): SWNW Sec 23-T12N-R94W 6th PM
County: Moffat Federal, Indian or State Lease Number: 96-4029-S
Field Name: Wildcat Field Number:

Complete the Attachment Checklist

Wellbore Diagram	Oper	OGCC
Cement Job Summary		
Wireline Job Summary		
P&A Procedure	X	

☒ Notice of Intent to Abandon

☐ Subsequent Report of Abandonment

Only Complete the Following Background Information for Intent to Abandon

Latitude: 40.98719563 Longitude: 107.9225391
GPS Data:
Date of Measurement: 1/24/07 PDOP Reading: 2.5 Instrument Operator's Name: Don Allred
Reason for Abandonment: ☐ Dry ☒ Production Sub-economic ☐ Mechanical Problems ☐ Other
Casing to be Pulled: ☐ Yes ☒ No Top of Casing Cement:
Fish in Hole: ☐ Yes ☒ No If yes, explain details below
Wellbore has Uncemented Casing Leaks: ☐ Yes ☒ No If yes, explain details below
Details: Well TD 4238' in Fort Union formation. Fort Union formation top estimated @ 3665'. SEE ATTACHED P&A PROCEDURE.

Current and Previously Abandoned Zones					
Formation	Perforations - Top	Perforations - Bottom	Date Abandoned	Method of Isolation (None, Squeezed, BP, Cement, etc.)	Plug Depth
FT. UNION	3936	4019			

Casing History							
String	Size of Hole	Size of Casing	Weight per ft	Setting Depth	Sacks Cement	Cement Bottom	Cement Top
Surface	12-1/4"	8-5/8"	24#	469'	200	469'	0
1st	7-7/8"	5-1/2"	15.5#	4226'	450	4226'	2000' (CBL)

Plugging Procedure for Intent and Subsequent Report

CIBP #1: Depth 60 with 3880 sacks cmt on top. CIPB #2: Depth 4070 with 450 sacks cmt on top.
Set 60 sks cmt from 3880 ft. to 4070 ft. in ☒ Casing ☐ Open Hole ☐ Annulus
Set sks cmt from ft. to ft. in ☐ Casing ☐ Open Hole ☐ Annulus
Set sks cmt from ft. to ft. in ☐ Casing ☐ Open Hole ☐ Annulus
Set sks cmt from ft. to ft. in ☐ Casing ☐ Open Hole ☐ Annulus
Set sks cmt from ft. to ft. in ☐ Casing ☐ Open Hole ☐ Annulus
Perforate and squeeze at 520 ft. with 32 sacks Leave at least 100 ft. in casing
Perforate and squeeze at ft. with sacks Leave at least 100 ft. in casing
Perforate and squeeze at ft. with sacks Leave at least 100 ft. in casing
Set sacks half in, half out surface casing from ft. to ft.
Set 16 sacks at surface
Cut four feet below ground level, weld on plate
Set sacks in rat hole Set sacks in mouse hole
Dry-Hole Marker: ☒ Yes ☐ No

NOTE: Two (2) sacks cement required on all CIBPs.

what?
CBL?

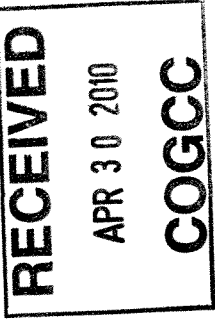
Additional Plugging Information for Subsequent Report Only

Casing Recovered: ft. of in. casing Plugging date:
*Wireline Contractor: *Cementing Contractor:
Type of Cement and Additives Used:
*Attach job summaries.

I hereby certify that the statements made in this form are, to the best of my knowledge, true, correct, and complete.

Print Name: Allison Barton Email: abarton@yatespetroleum.com
Signed: Allison Barton Title: Regulatory Compliance Tech Date: 04/27/10
OGCC Approved: EIT II Date: 6/11/2010
CONDITIONS OF APPROVAL, IF ANY:

KALINE STATE COM #14
SEC. 23 - 12N - 94W, MOFFAT CO., COLORADO
05-081-07206



PLUG & ABANDONMENT PROCEDURE

Contact COGCC at least 24 hours prior to commencing plugging operations.

Use Class G cement (5.0 gal water/sack, 15.8 ppg slurry wt, 1.15 cu ft/sack yield).

1. MIRU WSU. POOH and LD polished rod, 2 pony rods, 152 1" guided rods, and rotor.
2. ND tree and NU BOP. Tie onto 2 7/8" tubing, release TAC, POOH, LD BHA.
3. RIH to about 4070' and spot minimum 60 sack balanced plug. Pull up and squeeze 35 sacks (about 7 bbl) into perms 3936' - 4019'.
4. Circulate kill weight fluid to approximately 520' and POOH.
5. RIH with wireline and perforate squeeze holes at about 520'. POOH with wireline and try to establish injection.
6. RIH and set CICR at about 450'. Sting into CICR and squeeze minimum 25 sacks cement below retainer.
7. Sting out of retainer and spot minimum 50' (7 sacks) cement on top of CICR.
8. Cut off wellhead. Spot minimum 50' (7 sacks) cement inside 5-1/2" casing at surface.
9. Spot minimum 50' (9 sacks) cement in 5-1/2" x 8-5/8" annulus at surface via 1" tubing.
10. Install subsurface abandonment marker. Clean and restore surface as required.
11. File Subsequent Report of Abandonment within 30 days after plugging is complete as required.
12. Reclaim surface as required.

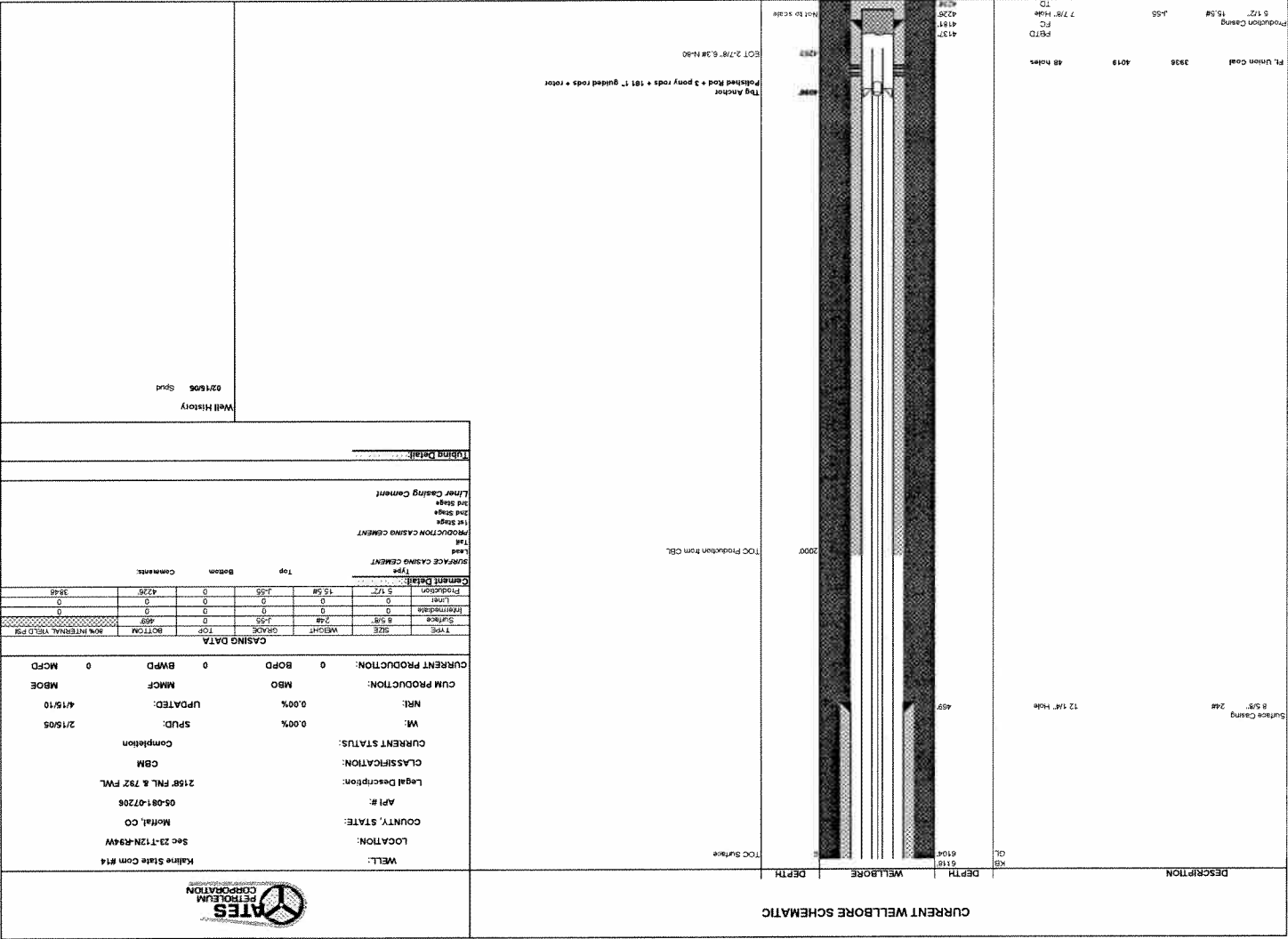
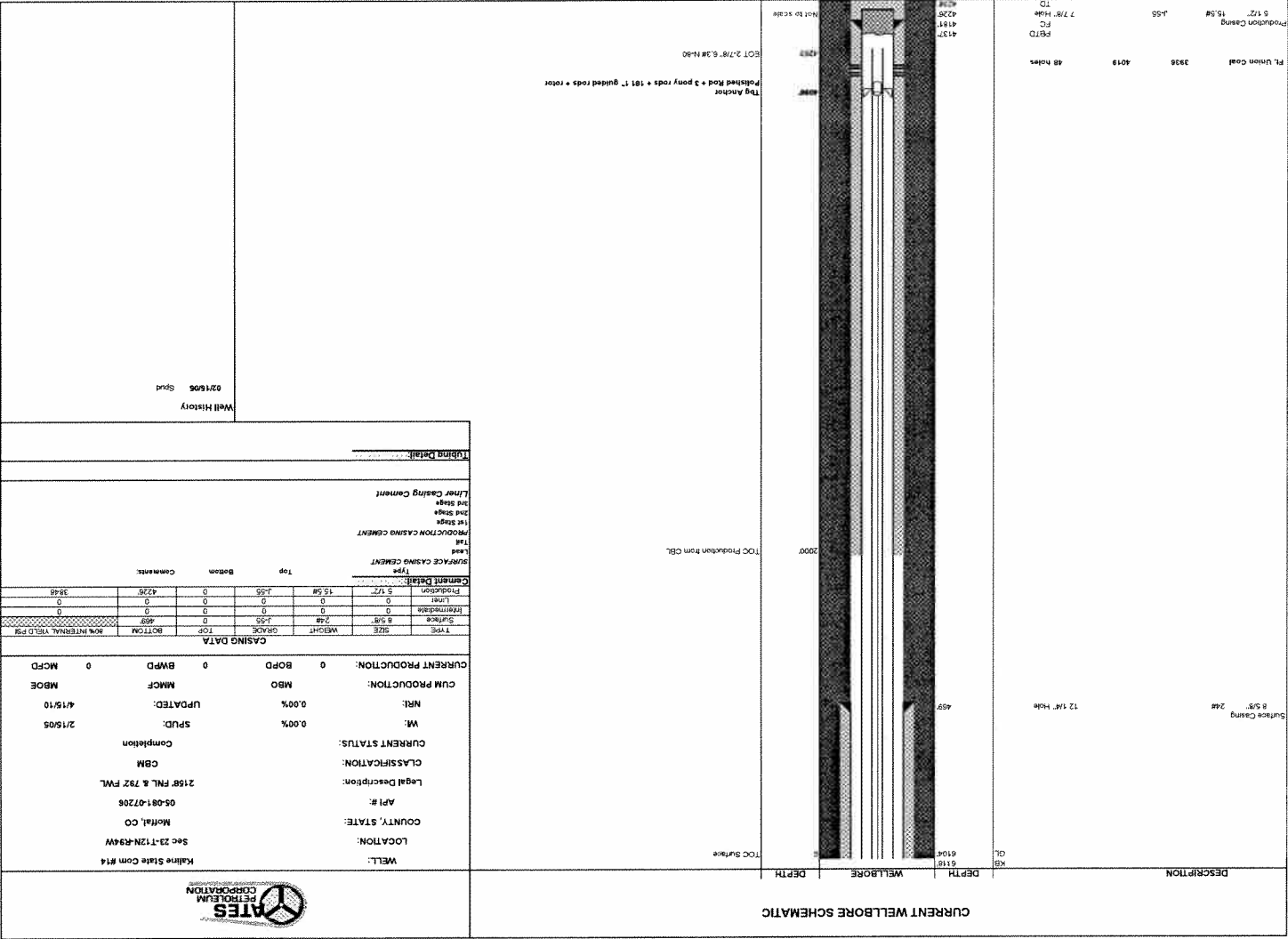
Brett Dempsey
4-15-10

Distribution: Darrick Stallings
Drew Podlesny
Paul Ragsdale
Mike Kozimko
well file
Allison Barton
WI partners

RECEIVED
APR 30 2010
COGCC

RECEIVED
APR 30 2010
COGCC

RECEIVED
APR 30 2010
COGCC



COGCC