

Pine Ridge Oil & Gas LLC, Woolly Bugger 34-20, SWSE Sec 20 19S 69W, Hydrology Map

**Red Lines**

**OIL AND GAS WELLS**

**Oil and Gas Wells**

**Temporary Point**

**Buffer layer**

**CITIES TOWNS PLACES**

**Towns and Places**

**ROADS AND RRS**

**Major Highways**

**WATER RESOURCES**

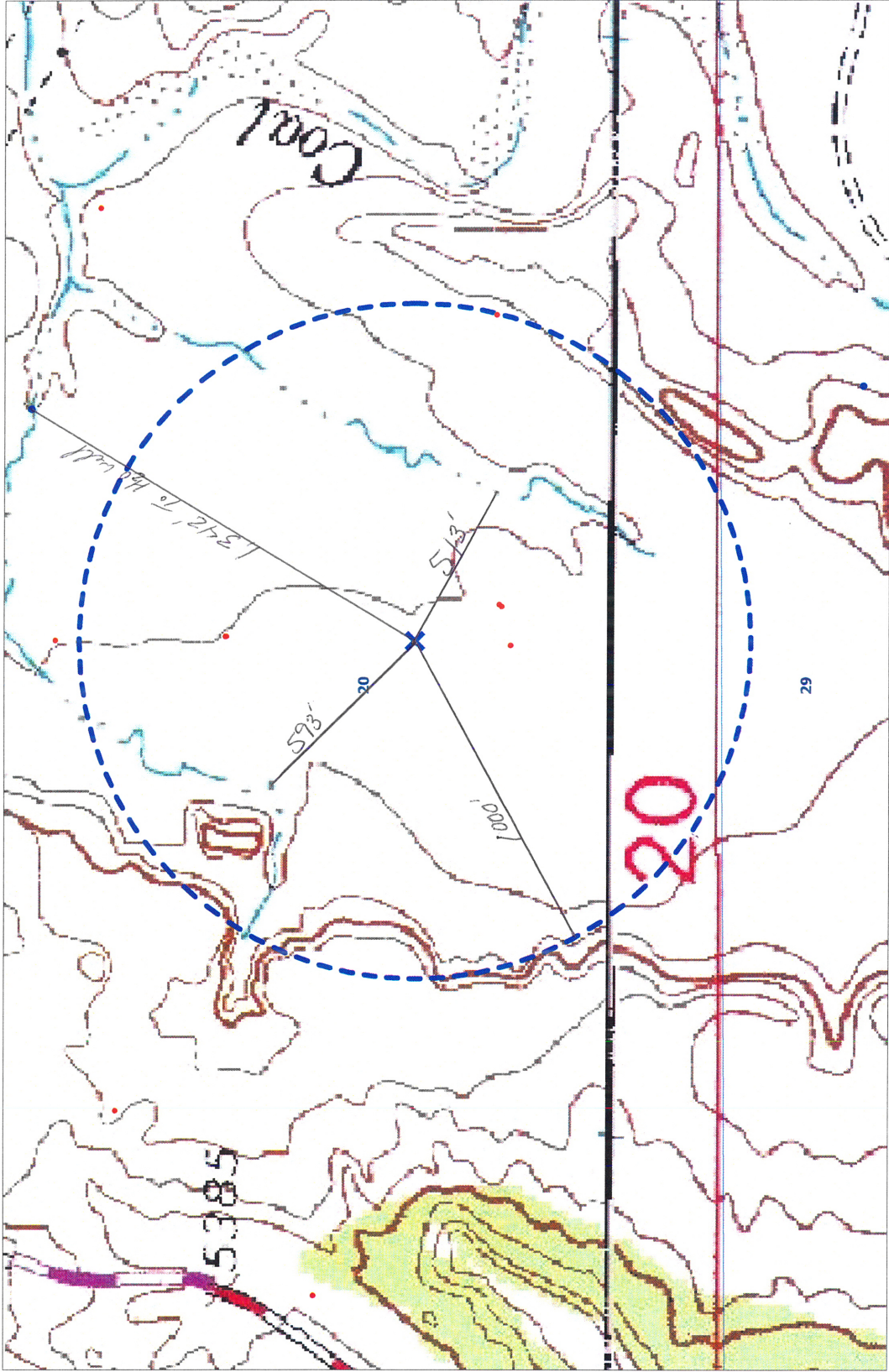
**Water Wells**

**SAN JUAN BASIN**

**-- Fruitland PC**

**TOPOS (1: 24K)**

**SE Colorado Topo**



SCALE 1 : 5,743

