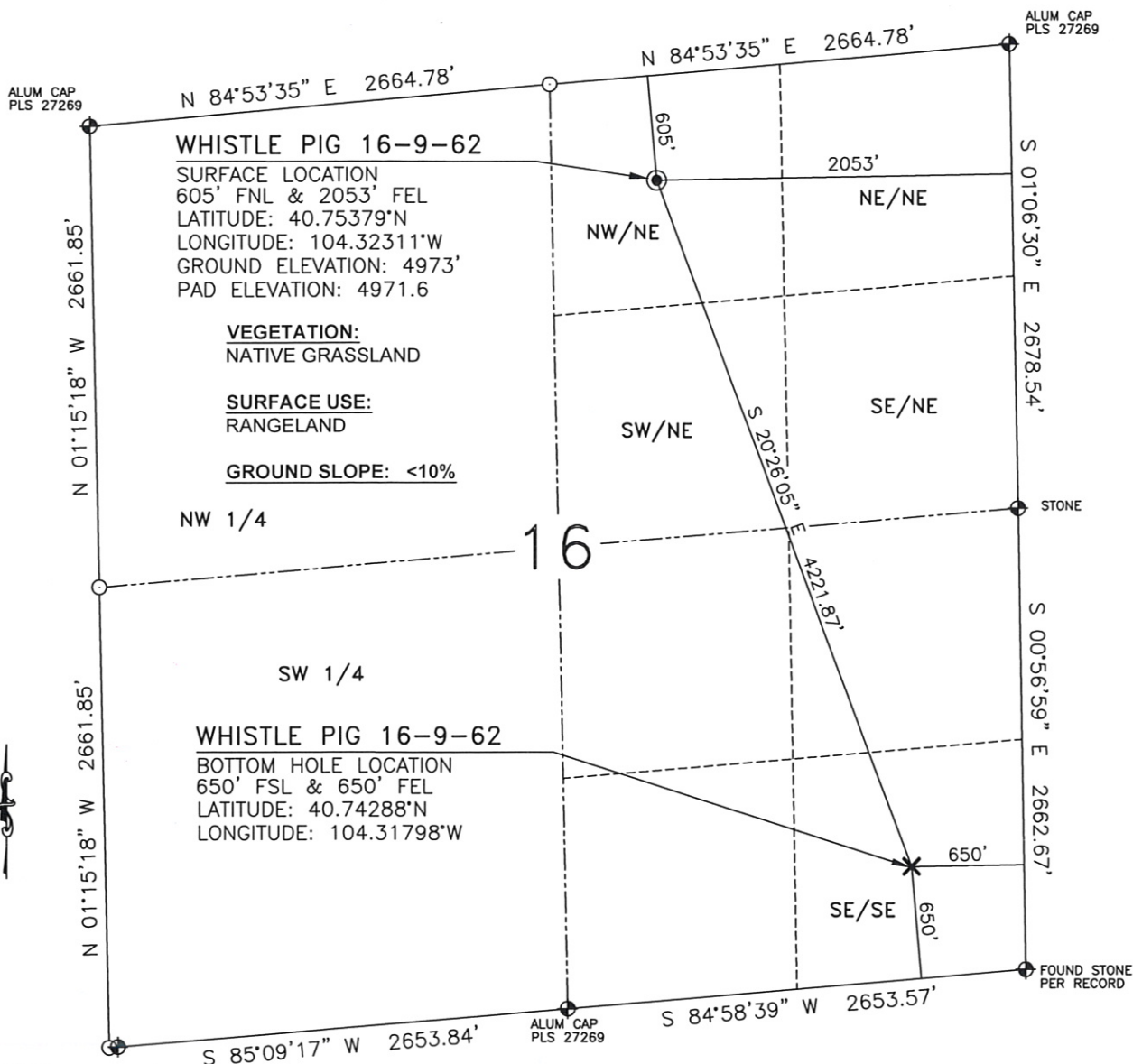
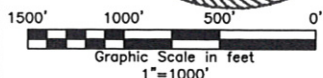


WELL LOCATION MAP

WHISTLE PIG 16-9-62



I, JASON D. LEVANEN, A DULY REGISTERED LAND SURVEYOR IN THE STATE OF COLORADO, DO HEREBY CERTIFY THAT THIS PLAT WAS PREPARED FROM NOTES TAKEN DURING A SURVEY PERFORMED BY ME OR UNDER MY SUPERVISION ON MAY 06, 2010.



WESTERN LAND SERVICES

Sheridan, WY 82801 (307)673-1817

DP: L:\Slawson\Well Plats\Well_Plats.dwg

Date: 5-12-10

SLAWSON EXPLORATION
 COMPANY, INC.
 WHISTLE PIG 16-9-62

SL: NW1/4NE1/4, S.16, T9N-R62W
 BL: SE1/4SE1/4, S.16, T9N-R62W
 6TH P.M., WELD COUNTY, COLORADO