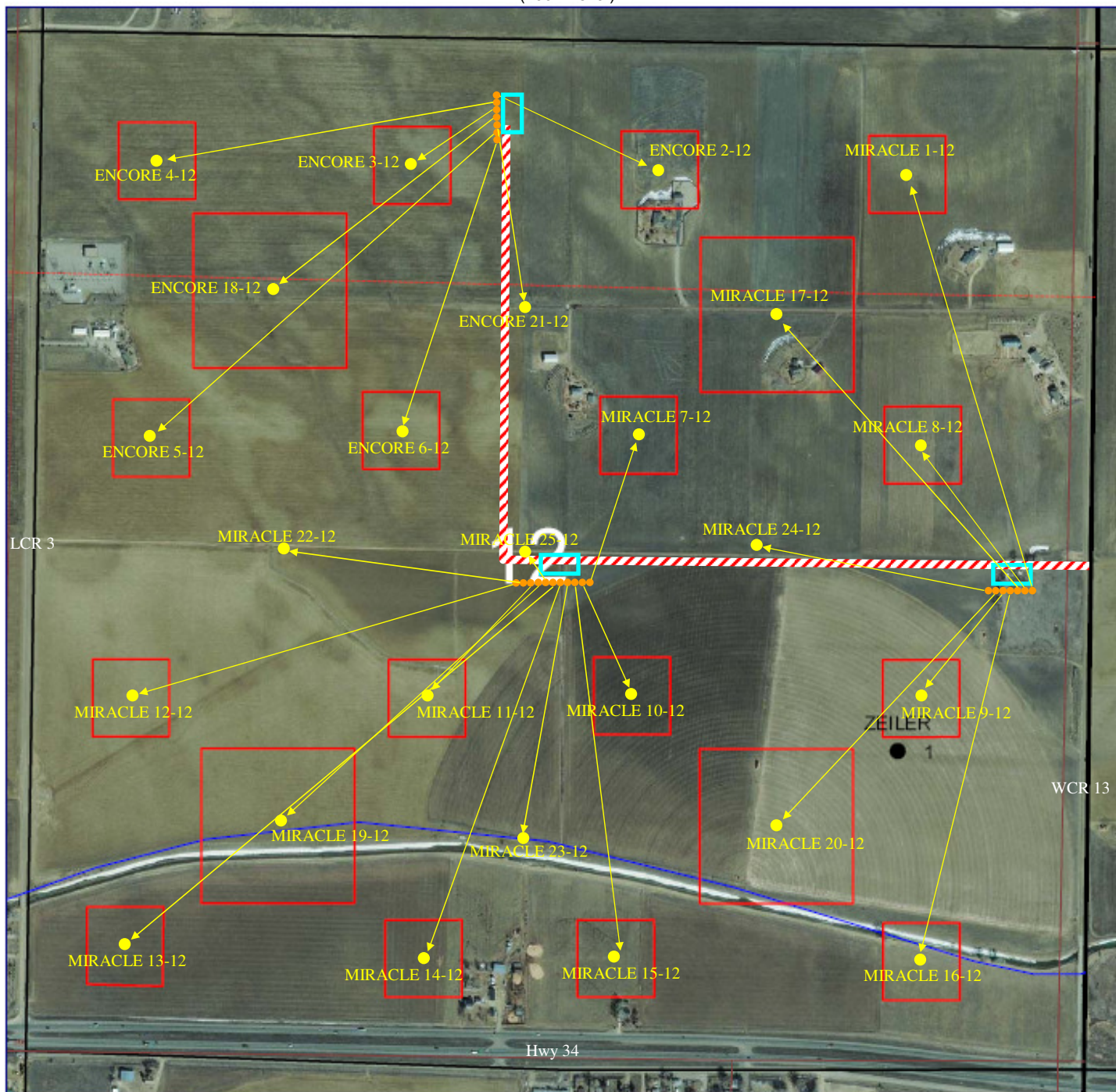


ACCESS ROAD  
(2007 Aerial)



This aerial photo and all notations and depictions thereon are provided as a courtesy and are intended to be used for general reference purposes only. Anadarko Petroleum Corporation does not warrant the accuracy or completeness of the information appearing on this aerial photo and any reliance on it for any purpose whatsoever is at the sole risk of the party so relying.



Access Road  
KMG Gathering Pipeline  
Duke Pipeline  
RGSI  
Proposed Flowline  
Legal Drilling Window  
Battery Location  
Proposed Wellhead  
Bottom Hole Location



**AERIAL PHOTO**  
Sec. 12-T5N-R6 8W  
Larimer County, Colorado

Author : Teddy Ruessman	Created : 03/12/2007	Printed : 12 March, 2008
Project : RM-DJ Basin Land	Scale : 1" = 300'	File : Sec12a12.gmp