

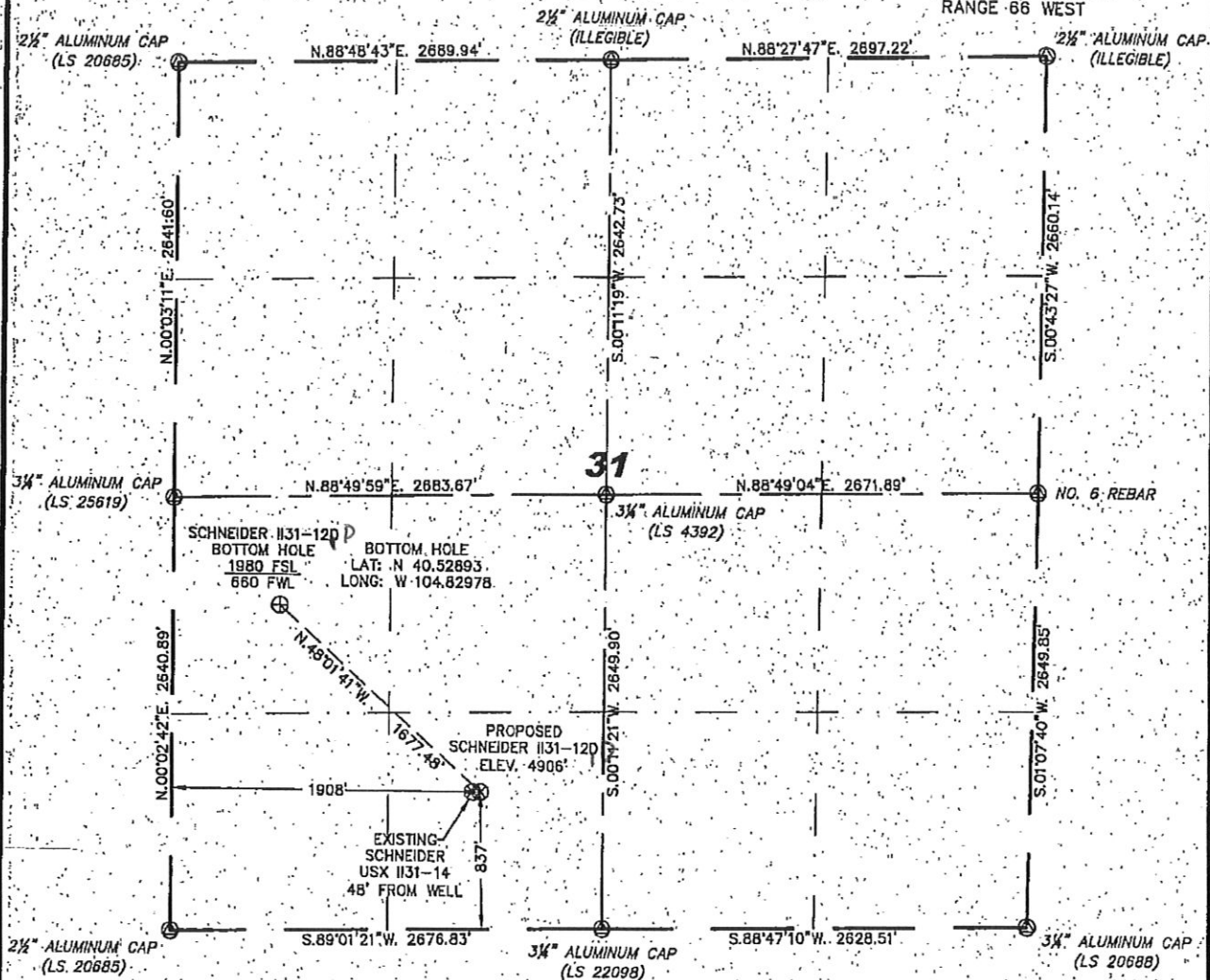
Stell Surveying Services, LLC

1102 West 19th Street P.O. BOX 2073

Cheyenne, Wyoming 82009

**WELL LOCATION CERTIFICATE**  
THIS MAP DOES NOT REPRESENT A BOUNDARY SURVEY

SECTION 31  
TOWNSHIP 7 NORTH  
RANGE 66 WEST



0 1000  
Scale: 1" = 1000'

IN ACCORDANCE WITH A REQUEST FROM JOE JOHNSON - NOBLE ENERGY INC., STELL SURVEYING SERVICES, LLC HAS DETERMINED THE LOCATION OF THE SCHNEIDER 1131-12D WELL TO BE 837' FSL, 1908' FWL, AS MEASURED AT NINETY (90) DEGREES FROM THE SECTION LINES, SECTION 31, TOWNSHIP 7 NORTH, RANGE 66 WEST, 6TH PRINCIPLE MERIDIAN, WELD COUNTY, COLORADO.

I HEREBY CERTIFY THAT THIS WELL LOCATION CERTIFICATE WAS PREPARED BY ME, OR UNDER MY DIRECT SUPERVISION, THAT THE FIELD WORK WAS COMPLETED ON 01/29/2010, FOR AND ON BEHALF OF NOBLE ENERGY INC., THAT IT IS NOT A LAND SURVEY PLAT OR AN IMPROVEMENT SURVEY PLAT, AND THAT IT IS NOT TO BE RELIED UPON FOR ESTABLISHMENT OF FENCE, BUILDING, OR OTHER FUTURE IMPROVEMENT LINES.

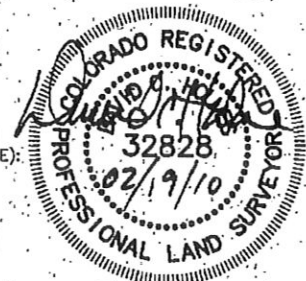
**NOTES:**

- 1) BASIS OF BEARINGS FOR THIS MAP ARE BASED UPON GPS OBSERVATIONS MADE ON 08/03/2008 BETWEEN MONUMENTS LOCATED AT THE SOUTHWEST SECTION CORNER AND THE NORTHWEST SECTION CORNER OF SAID SECTION AND WITH ALL BEARINGS SHOWN HEREON RELATIVE THERETO.
- 2) ELEVATIONS ARE BASED UPON NGS OPUS SOLUTION NAVD 88 DATUM.
- 3) THE NEAREST EXISTING WELL IS: SCHNEIDER USX 1131-14, 48' WEST.
- 4) SEE VISIBLE IMPROVEMENTS EXHIBIT FOR ALL IMPROVEMENTS WITHIN 400'.
- 5) THE LOCATION FALLS IN IRRIGATED CROP LAND.

LATITUDE & LONGITUDE (NAD 83 SURFACE HOLE):  
LATITUDE: N. 40.52582'  
LONGITUDE: W. 104.82533'  
POOP: 1.9  
QUARTER-QUARTER: SE/4SW/4  
NEAREST PROPERTY LINE: 670' TO THE SOUTH

**LEGEND**

- (A) FOUND SURVEY MONUMENT PER MONUMENT RECORD - EXCEPTIONS NOTED.
- (C) CALCULATED DIMENSION.



Completed 02/16/2010

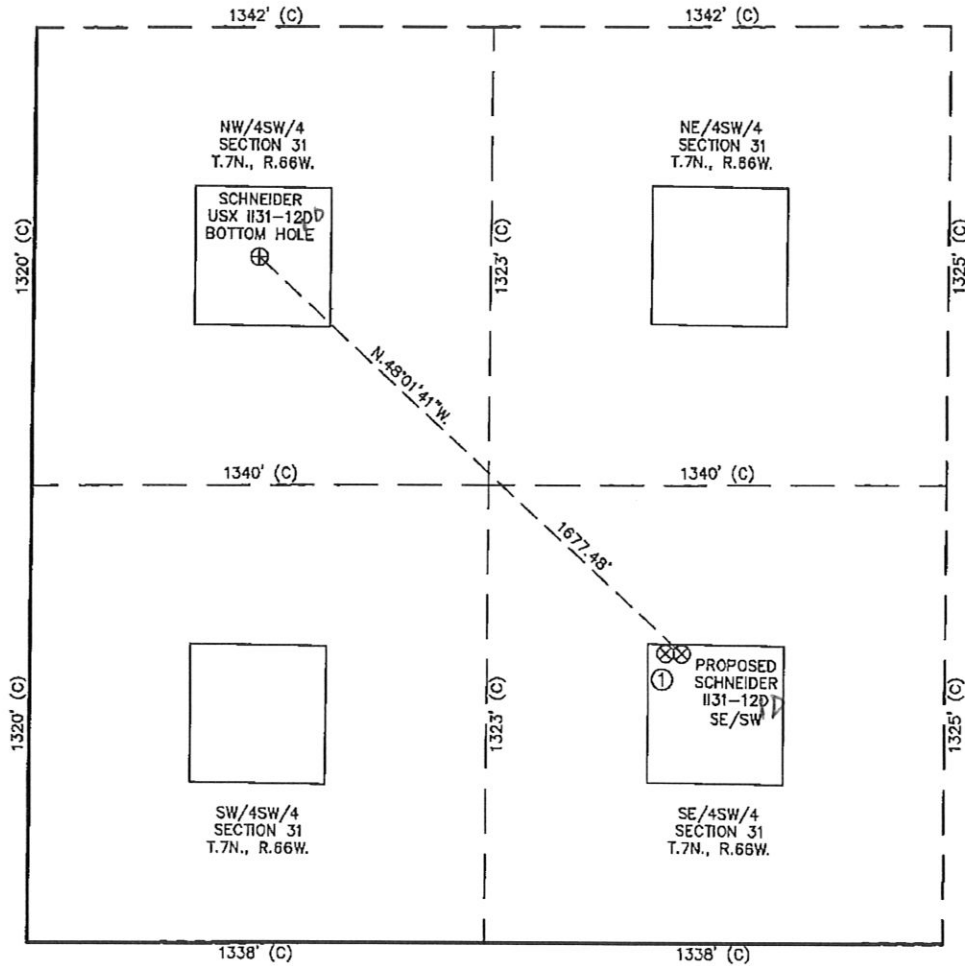
David C. Holmes  
Professional Land Surveyor Registration No. 32828  
State of Colorado

JOB #: 10086

NOTICE: According to Colorado law you MUST commence any legal action based upon any defect in this W.L.C. within three years after you first discover such defect. In no event may any action based upon any defect in this W.L.C. be commenced more than ten years from this said date of this certification shown hereon.

# SITE SKETCH - SCHNEIDER II31-12PD

SECTION 31  
TOWNSHIP 7 NORTH  
RANGE 66 WEST



①

SCHNEIDER  
USX II31-14  
SE/SW SEC. 31  
838' FSL  
1861' FWL  
EL. 4906'  
N 40.52583  
W 104.82550  
PDOP 2.0

## NOTES:

- 1) THIS SKETCH DOES NOT REPRESENT A BOUNDARY SURVEY.
- 2) THE DATUM FOR THE LATITUDES AND LONGITUDES ON THIS SKETCH IS NAD83.

