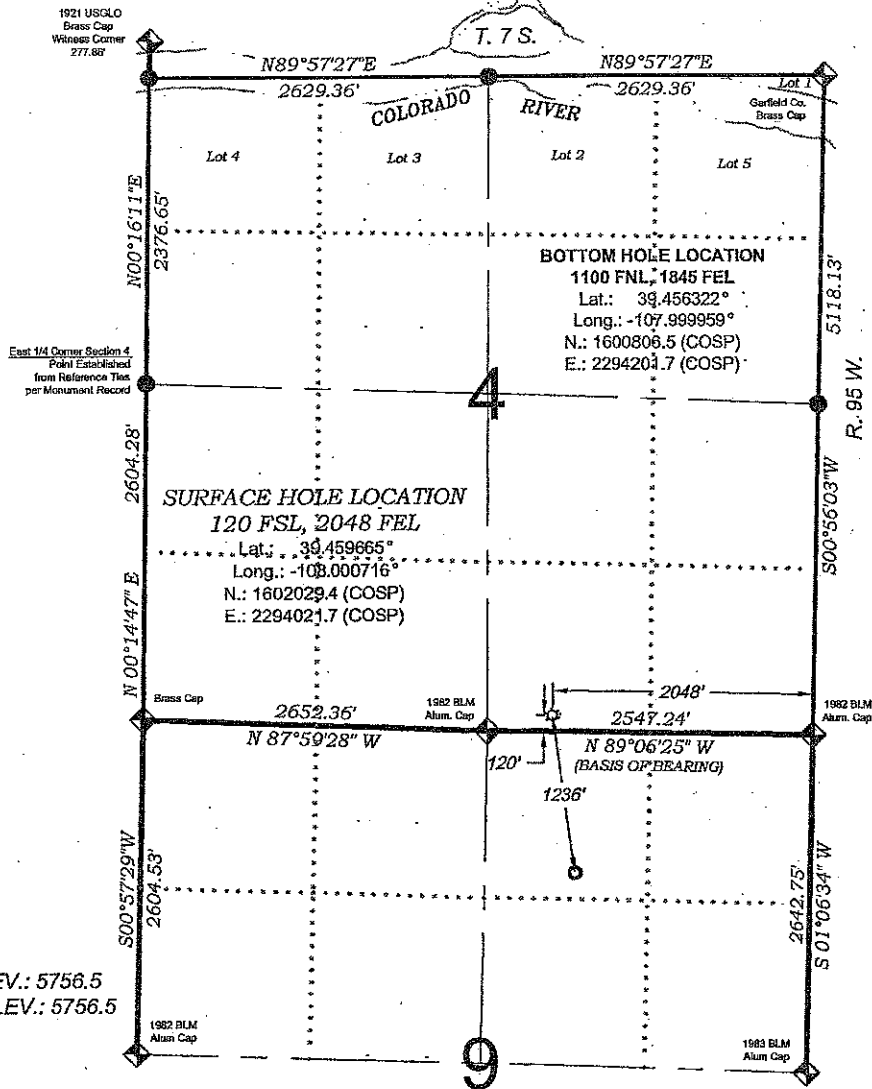


# Savage PA 431-9



PROPOSED PAD ELEV.: 5756.5  
 EXISTING GROUND ELEV.: 5756.5

THERE ARE NO VISIBLE IMPROVEMENTS WITHIN 400' OF THIS LOCATION



## - LEGEND -

- FIELD LOCATED SECTION MONUMENTS AS DESCRIBED
- FIELD SURVEYED WELL LOCATION
- CALCULATED BOTTOM HOLE LOCATION
- CALCULATED SECTION CORNER LOCATION

### SURVEYORS STATEMENT

I, MICHAEL J. LANGHORNE, A REGISTERED LAND SURVEYOR IN THE STATE OF COLORADO DO HEREBY CERTIFY THAT THE SURVEY SHOWN HEREON WAS PREPARED UNDER MY DIRECT SUPERVISION AND HAS BEEN STAKED ON THE GROUND AS SHOWN ON THE PLAT AND CHECKING THAT THIS MAP IS A TRUE REPRESENTATION THEREOF.

*Michael J. Langhorne*

MICHAEL J. LANGHORNE, COLORADO REGISTRATION NO. 36572  
 FOR AND ON BEHALF OF  
 BOOKCLIFF SURVEY SERVICES, INC.

### NOTES

- 1) ELEVATIONS BASED ON N.A. V.D. 1988 PUBLISHED COORDINATES.
- 2) LATITUDES AND LONGITUDES ARE BASE ON NAD 83, PUBLISHED COORDINATES
- 3) STATE PLANE COORDINATES ARE BASED ON COLORADO CENTRAL ZONE, U.S. SURVEY FEET.
- 4) ELEVATION MASK SET TO 15°
- 5) GPS OPERATOR J. KIRKPATRICK, OBSERVED A PDOP OF LESS THAN 6.0
- 6) SURFACE AND BOTTOM HOLE LOCATIONS ARE MEASURED 90° FROM SECTION LINES.

**WELL LOCATION PLAT Prepared for:**  
 Williams Production, RMT  
 SW1/4 SE1/4, SECTION 4  
 T. 7 S., R. 95 W. of the 6th. P.M.  
 GARFIELD COUNTY, COLORADO

### REFERENCES

- 1) DEPENDENT RESURVEY T. 7 S., R. 95 W., 6 TH. P.M (GLO PLAT)
- 2) U.S.G.S. QUAD: RULISON, CO & PARACHUTE, CO

SURVEY DATE: 7/8/09  
 MAP DATE: 5/17/10  
 SCALE: 1" = 1500'  
 PLAT: 1 of 9  
 PROJECT: Williams

700 East 10th Street  
 Rifle, Colorado 81650  
 Ph: (970) 625-1230  
 Fax: (970) 625-2177

