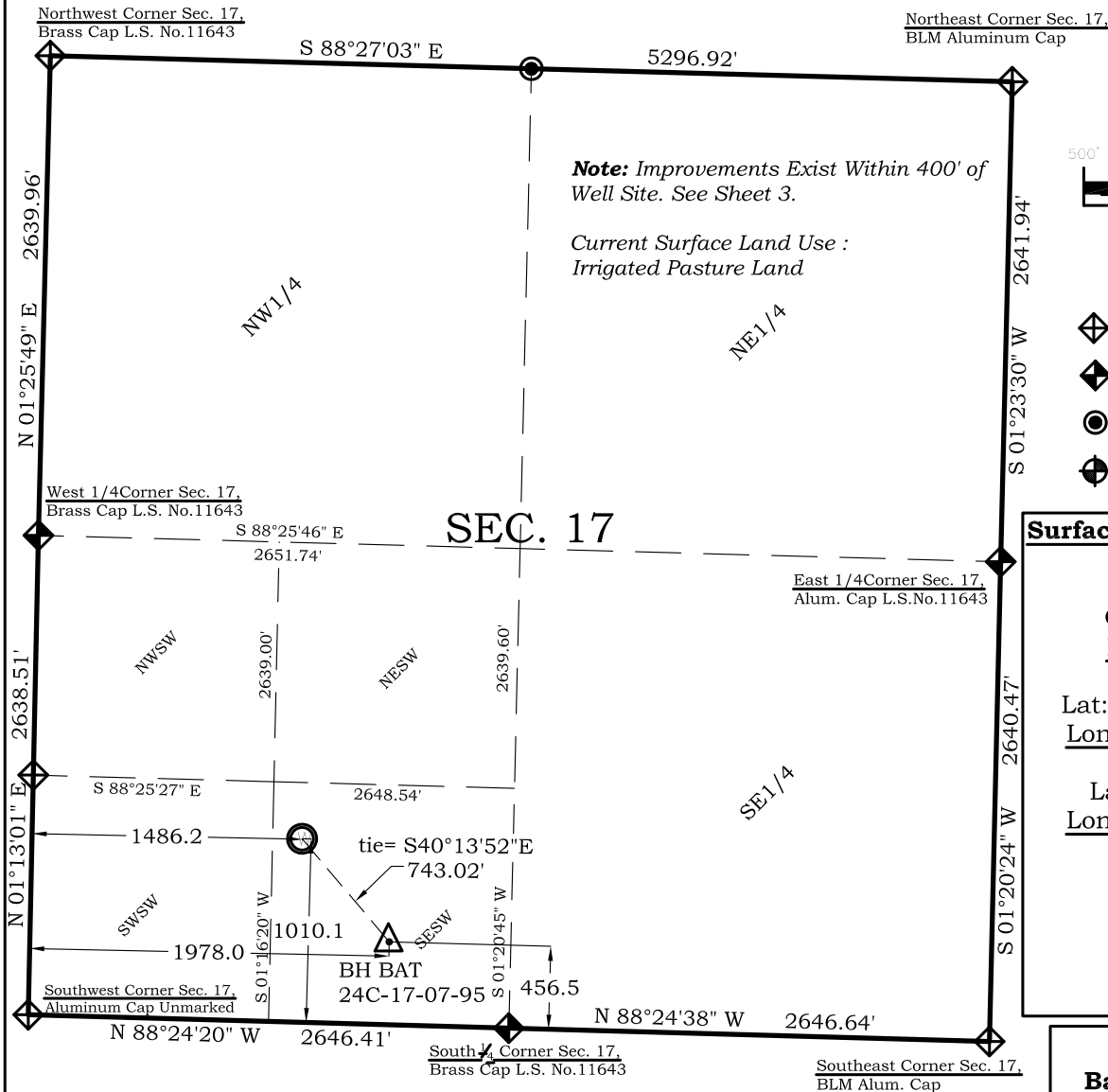


Well Location Plat BAT 24C-17-07-95

Section 17, Township 7 South, Range 95 West



Surface: Bat 24C-17-07-95

1010' FSL

1486' FWL

Gnd El= 5563.1

Pad El= 5560.0

NAD83

Lat: 39.433225934°N

Long: 108.025102114°W

NAD27

Lat: 39.433247805°N

Long: 108.024472773°W

UTM 13 NORTH

NAD 1983

NORTHING

14334689.272

EASTING

786193.965

Bottom Hole:

Bat 24C-17-07-95

456' FSL

1978' FWL

NAD83

Lat: 39.431714331°N

Long: 108.023337555°W

NAD27

Lat: 39.431736201°N

Long: 108.022708300°W

SURVEYOR'S CERTIFICATE

I, SCOTT E. AIBNER, A REGISTERED LAND SURVEYOR, LICENSED UNDER THE LAWS OF THE STATE OF COLORADO DO HEREBY CERTIFY THAT THE SURVEY SHOWN HEREON WAS PREPARED BY RIVER VALLEY SURVEY, INC., FOR ANTERO RESOURCES, BY ME OR UNDER MY DIRECT SUPERVISION AND THAT THIS PLAT IS A TRUE REPRESENTATION THEREOF.

BY: 
SCOTT E. AIBNER, COLORADO REG. NO. 31143

Notes:

- LATITUDE AND LONGITUDE COORDINATES ARE DIFFERENTIALLY CORRECTED AND BASED ON PUBLISHED NGS CONTROL STATION "KOESELL". SYSTEM: UTM ZONE: 13 NORTH DATUM: NAD 1983 (CONUS)
- ELEVATIONS ARE BASED ON NAVD OF 1929.
- ALL BOTTOM AND TOP HOLE LOCATIONS ARE MEASURED 90 DEGREES FROM SECTION LINE.
- USGS QUADRANGLE MAP "GRAND VALLEY".
- CURRENT SURFACE LAND USE: IRRIGATED PASTURE LAND
- PDOP AT THE TIME OF LOCATION OF SURFACE WELL = 1.8



River Valley Survey, Inc.
110 East 3rd. Street, Suite 213
Rifle, Colorado 81650
Ph: 970-379-7846

Project: WATSON RANCH PAD

Field Date: 06-19-09

Date: 06-03-2010

Scale: 1"= 1000'

Sheet: 1 of 9

Well Location Plat
Prepared For Antero Resources

Situate In:
SE 1/4 SW 1/4 Section 17, T7S., R. 95 W. of
the 6th P.M., Garfield County, Colorado

