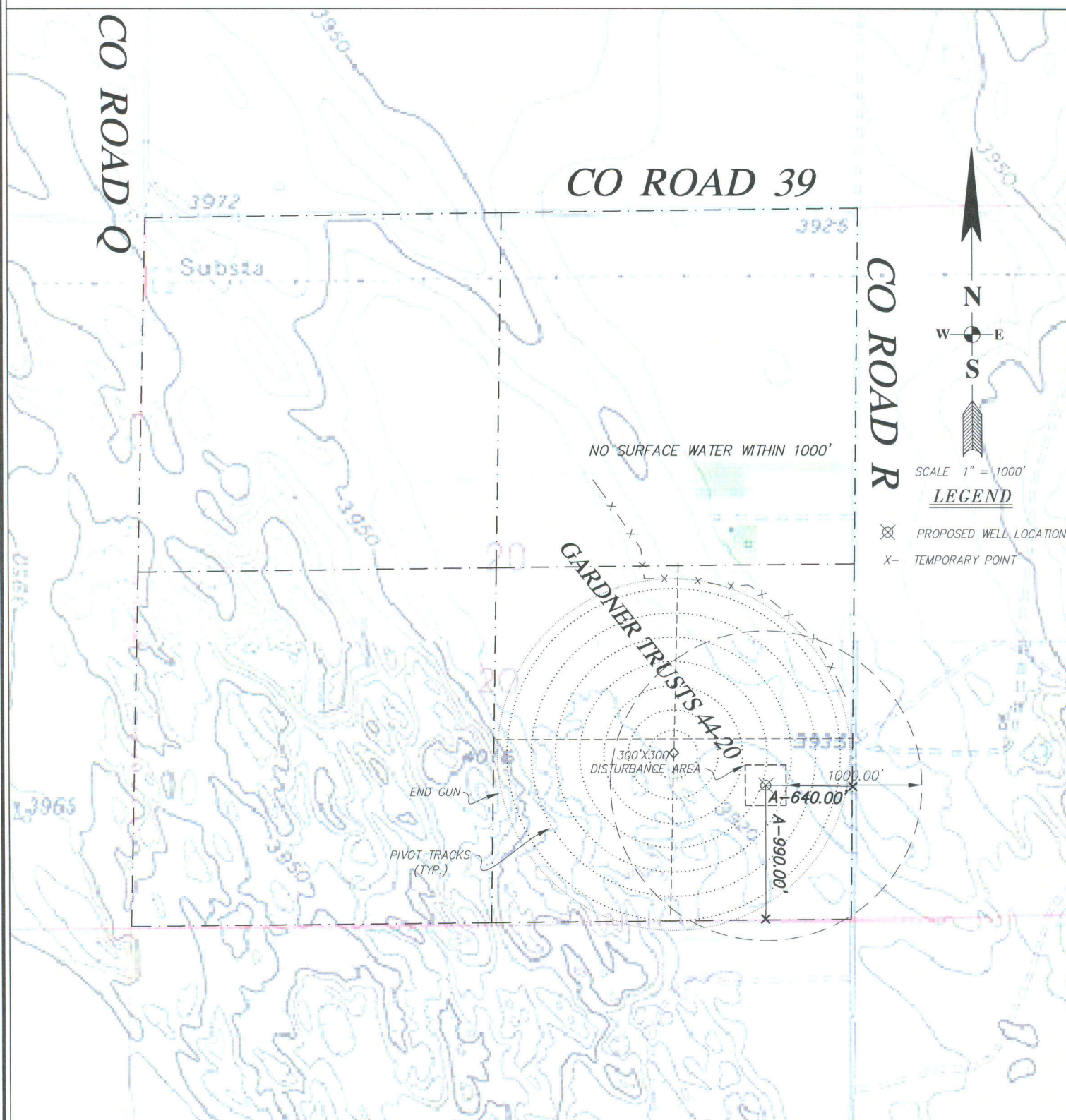


# HYDROLOGY MAP

FOR WELL GARDNER TRUSTS 44-20 LOCATED IN SECTION 20, TOWNSHIP 2 NORTH, RANGE 46 WEST OF THE 6TH P.M., YUMA COUNTY, COLORADO.



**DICKINSON LAND SURVEYORS, INC.**

NEBRASKA AND COLORADO CERTIFIED

406 WEST 3rd STREET, OGALLALA, NEBRASKA 69153  
OFFICE: 308-284-8440 [www.dickinsonlandsurveyors.com](http://www.dickinsonlandsurveyors.com)

NOTE: THIS IS NOT A LAND SURVEY PLAT

0' 1000' 2000' 3000'

