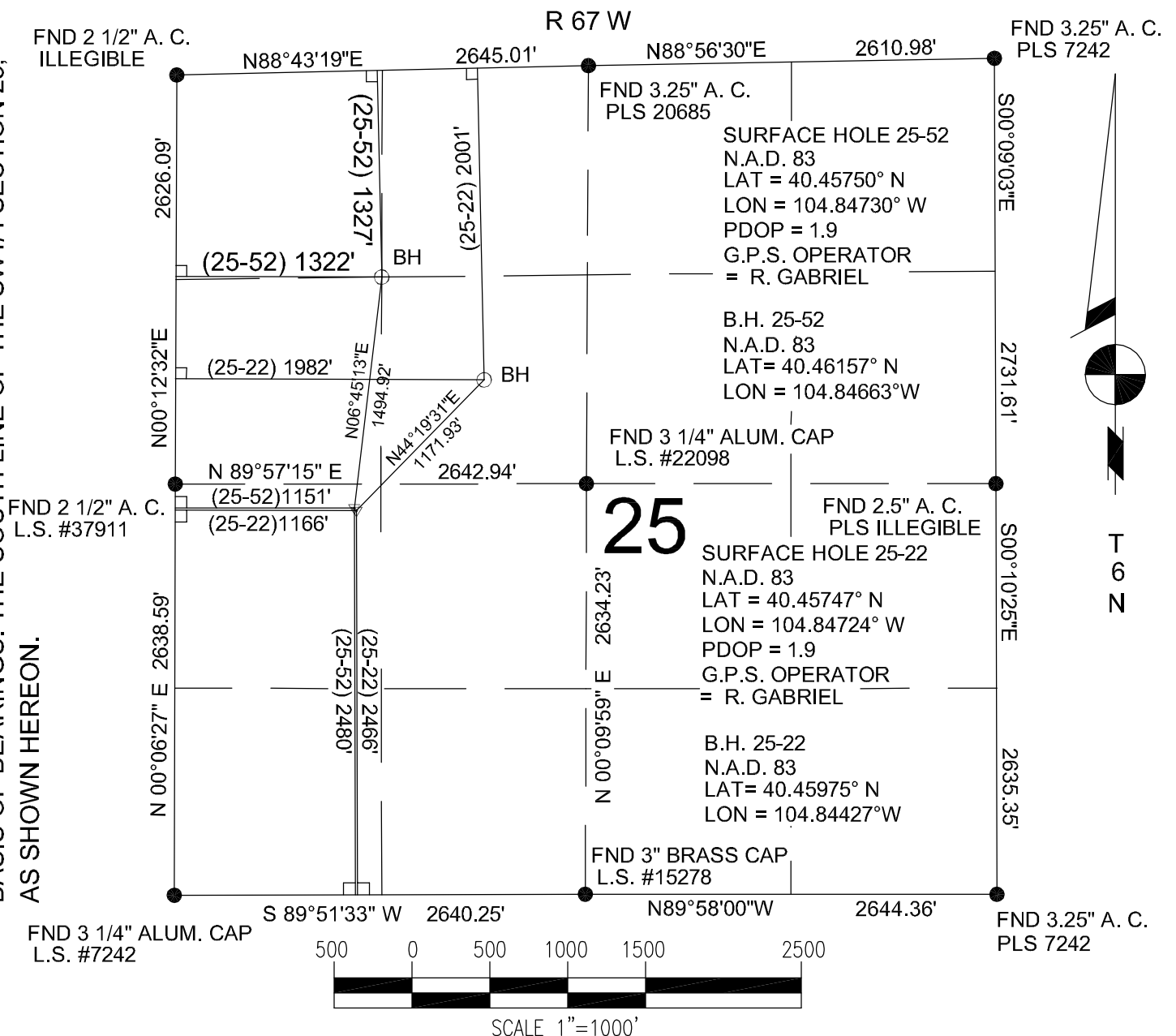


BASIS OF BEARINGS: THE SOUTH LINE OF THE SW1/4 SECTION 25,
AS SHOWN HEREON.



Power Surveying Co., Inc. of Thornton, Colorado has in accordance with a request from GARY STEELE for GREAT WESTERN OIL & GAS determined the location of GREAT WESTERN 25-52 to be 2480' FSL & 1151' FWL Section 25, Township 6 NORTH Range 67 WEST of the Sixth Principal Meridian, WELD County, COLORADO

LOCATION NOTES
LOCATION FALLS WITHIN : NATURAL GROUND
IMPROVEMENTS: 1) 127' N. TO E/W CONC. IRRIGATION DITCH
2) 147' N. TO E/W CONC. IRRIGATION DITCH
3) 182' N. TO E/W CHAIN LINK FENCE
4) 200' N. TO E/W RAILROAD TRACKS

ELEVATION DETERMINED FROM NAVD 1988 DATUM.
GROUND ELEVATION = 4751

DISTANCES AND BEARINGS ARE FIELD MEASURED
UNLESS OTHERWISE NOTED.

Power Surveying Co., Inc. of Thornton, Colorado has in accordance with a request from GARY STEELE for GREAT WESTERN OIL & GAS determined the location of GREAT WESTERN 25-22 to be 2466' FSL & 1166' FWL Section 25, Township 6 NORTH Range 67 WEST of the Sixth Principal Meridian, WELD County, COLORADO

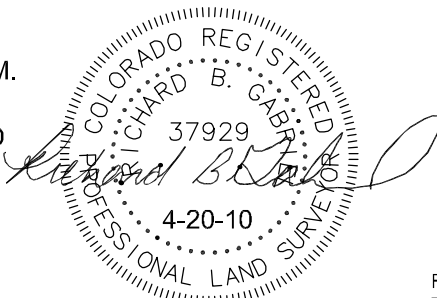
LOCATION NOTES
LOCATION FALLS WITHIN : NATURAL GROUND
IMPROVEMENTS: 1) 140' N. TO E/W CONC. IRRIGATION DITCH
2) 160' N. TO E/W CONC. IRRIGATION DITCH
3) 196' N. TO E/W CHAIN LINK FENCE
4) 213' N. TO E/W RAILROAD TRACKS

ELEVATION DETERMINED FROM NAVD 1988 DATUM.
GROUND ELEVATION = 4751

DISTANCES AND BEARINGS ARE FIELD MEASURED
UNLESS OTHERWISE NOTED.

LEGEND

- SECTION CORNER (AS NOTED)
- ▼ PROPOSED WELL LOCATION
- PROPOSED BOTTOM HOLE LOCATION



120 W. 84TH AVE
THORNTON, COLORADO 80260
303-702-1617

RICHARD B. GABRIEL
COLORADO P.L.S. # 37929

FIELD DATE: 04-20-10 WO# 501-10-063
DATE OF COMPLETION: 04-20-2010
NOTE: THIS IS NOT A BOUNDARY SURVEY.