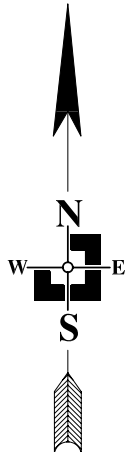
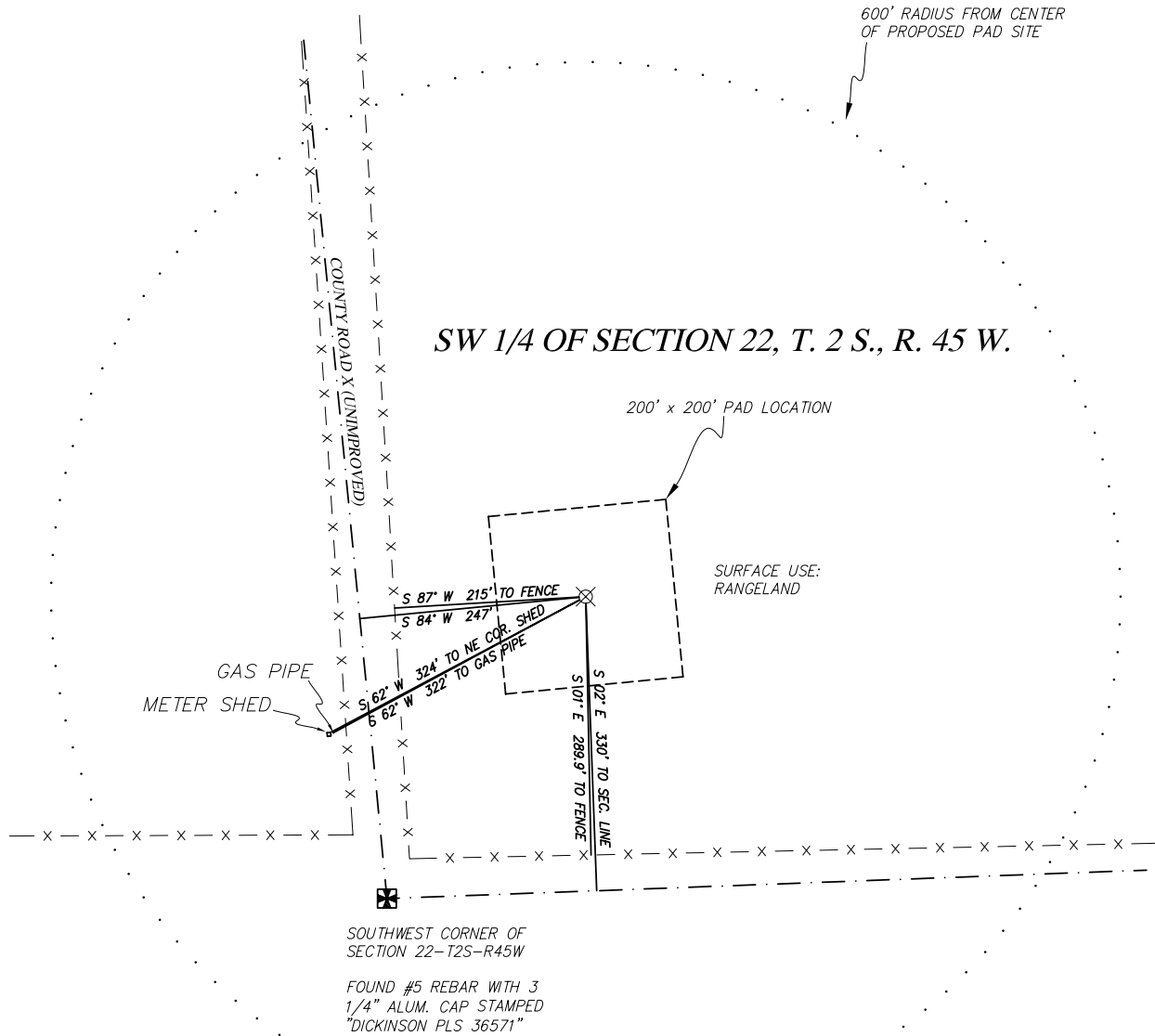


AUGUSTUS WDW 14-22

LOCATION DRAWING

YUMA COUNTY, COLORADO
MAY 13, 2010



LEGEND

- FOUND ALIQUOT CORNER
- PROPOSED WELL LOCATION
- FENCE LINE
- SECTION LINE

NOTE:

- NEAREST RAILROAD - 17 +/- MILES TO NORTH
- NEAREST RIVER - ARIKAREE RIVER - 6.2 +/- MILES SOUTHEAST
- NEAREST BODY OF WATER - BONNY RESERVOIR - 20 +/- MILES NORTH

SCALE 1" = 200'



THREE CORNERS SURVEYING AND MAPPING, LLC

PO Box 463; 312 Main Street 970-332-4133
Wray, CO 80758 3cornerssurveying@centurytel.net

