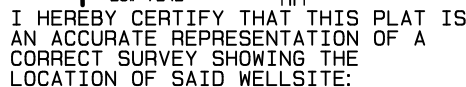


FND PIPE & 3" AC LS# 4845		FND PIPE & 3" AC LS# 4845		FND PIPE & 3" AC LS# 4845	
S89°56'51"E	2658.31'	S89°54'19"E	2633.71'		



CONTRACT SURVEYORS, LTD.
COMPLETE SURVEYING AND GLOBAL POSITIONING

WELD COUNTY, COLORADO

Scale 1" = 1000'