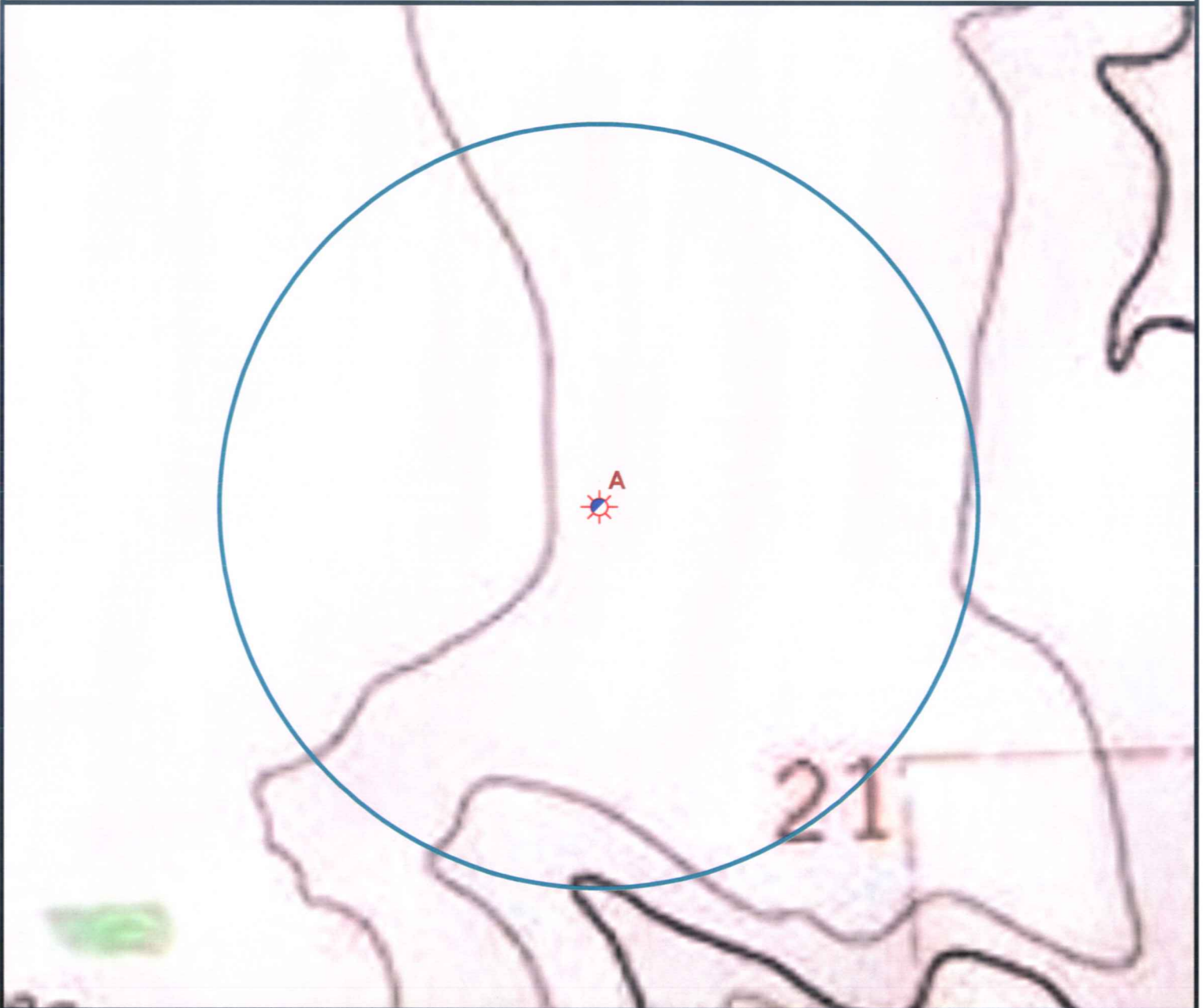


# Hydrology Map



A. Proposed well DETERDING 21-06.

There are no surface waters within a 1000' radius of the proposed oil & gas location.



## Legend

- |                      |                       |
|----------------------|-----------------------|
| Proposed Well        | Building/Residence    |
| Existing Well        | Oil & Gas Equipment   |
| Water Well           | Water Body            |
| Pedestal             | Utility Box           |
| CattleGuard/Gate     | Railroad              |
| Bridge               | Fence                 |
| ECD                  | Overhead Power Line   |
| 1000' Radius         | Pipeline              |
| Facilities Enclosure | Access Road           |
|                      | Ditch/Canal           |
|                      | Concrete Walled Ditch |

## 1000ft Radius Map of Surface Water and Riparian Areas

### DETERDING 21-06

Surface Location: T1S R44W S21

Field Date: 03/17/2010  
 Drawing Date: 03/19/2010  
 Drafter: DMM  
 Checked By: BHF

Prepared for:  
**Rosetta Resources**  
 Operating LP  
 717 Texas Avenue, Ste. 2800  
 Houston, TX 77002



Use our resources to find yours!  
[www.petro-fs.com](http://www.petro-fs.com)

1801 W. 13th Ave Suite 207  
 Denver, CO 80204  
 (303) 928-7128  
 111 E. Third Street  
 Rifle, CO 81650  
 (970) 625-4740