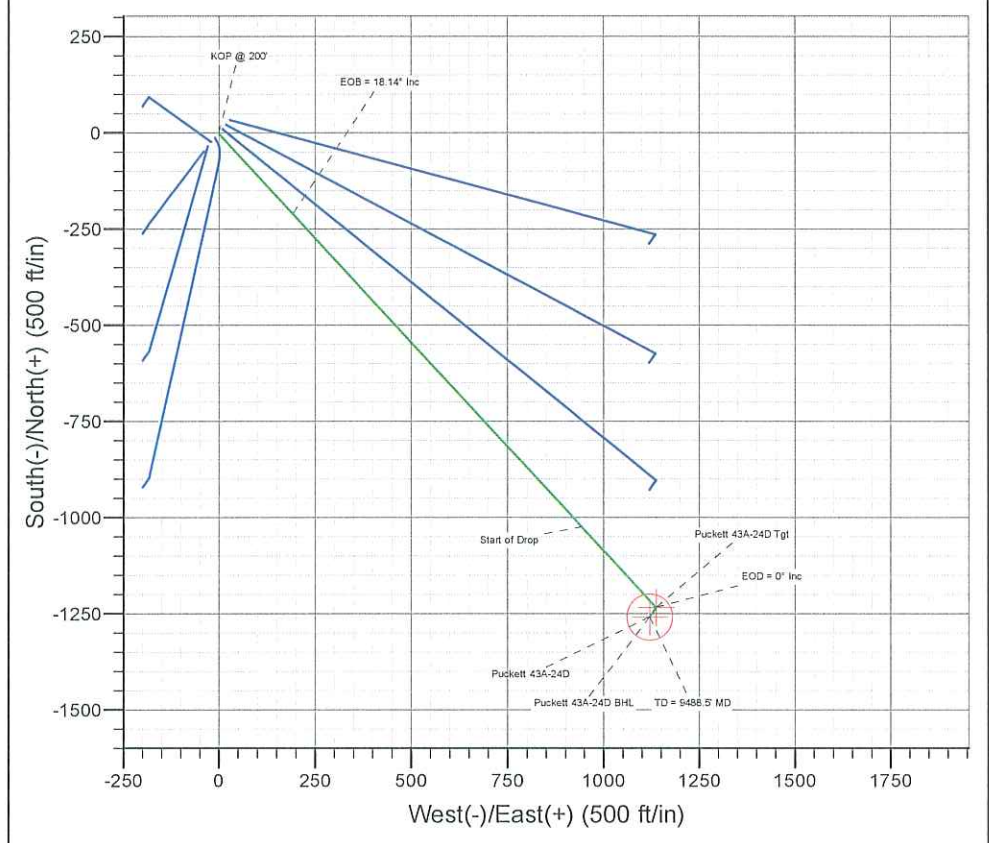
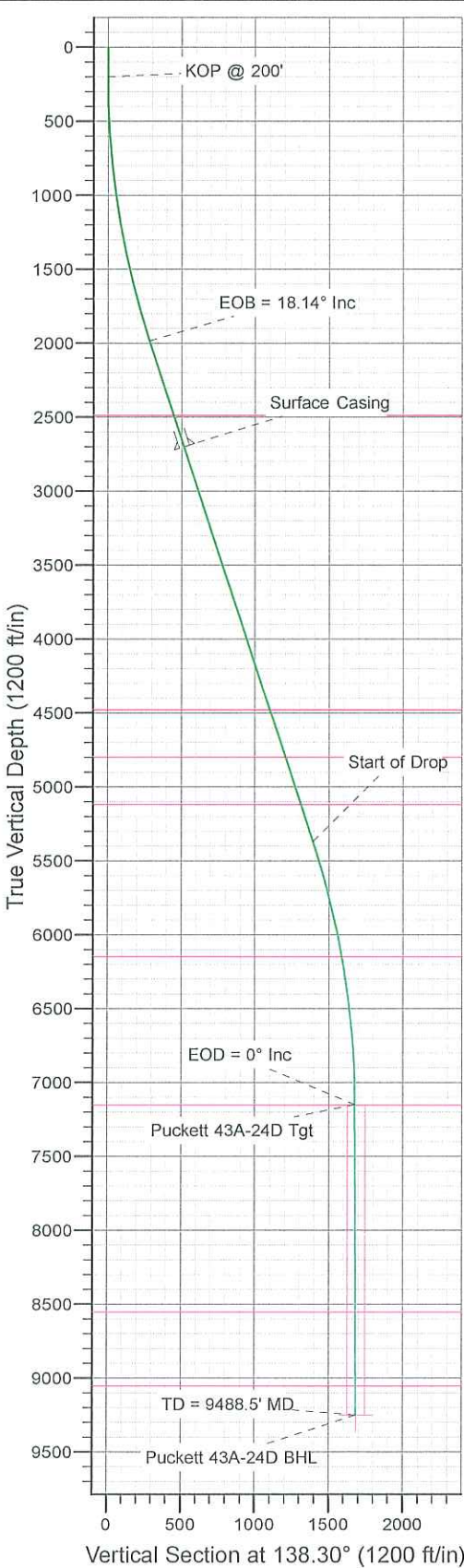




Azimuths to True North
 Magnetic North: 10.56°
 Magnetic Field
 Strength: 52323.7snT
 Dip Angle: 65.75°
 Date: 2010/05/27
 Model: IGRF2010-14

WELL DETAILS: Puckett 43A-24D

+N/-S 0.0 +E/-W 0.0 Northing 1622207.00
 Ground Level: 8262.0 Easting 2248005.85
 Slot Longitude -108.165719 Latitude 39.511447



ANNOTATIONS

TVD	MD	Annotation
200.0	200.0	KOP @ 200'
1983.7	2013.9	EOB = 18.14° Inc
5367.3	5574.4	Start of Drop
7151.0	7388.2	EOD = 0° Inc
9251.0	9488.5	TD = 9488.5' MD

FORMATION TOP DETAILS

TVDPath	MDPath	Formation
2486.0	2542.4	Wasatch
4476.0	4636.5	Wasatch "G" Sand
4796.0	4973.2	Fort Union
5116.0	5309.9	Base Fort Union
6146.0	6378.0	Mesaverde/Williams Fk
7151.0	7388.2	Top Gas Cell
8551.0	8788.4	Cameo
9051.0	9288.4	Rollins

ON DETAILS

Sec	MD	Inc	Azi	TVD	+N/-S	+E/-W	DLeg	TFace	VSec	Target
1	0.0	0.00	0.00	0.0	0.0	0.0	0.00	0.00	0.0	
2	200.0	0.00	0.00	200.0	0.0	0.0	0.00	0.00	0.0	
3	2013.9	18.14	137.30	1983.7	-209.2	193.1	1.00	137.30	284.7	
4	5574.4	18.14	137.30	5367.3	-1023.9	944.8	0.00	0.00	1393.0	
5	7388.2	0.00	0.00	7151.0	-1233.1	1137.9	1.00	180.00	1677.6	Puckett 43A-24D Tgt
6	7746.2	0.89	214.95	7508.9	-1235.4	1136.3	0.25	214.95	1678.3	
7	9488.5	0.89	214.95	9251.0	-1257.7	1120.7	0.00	0.00	1684.6	Puckett 43A-24D BHL

WELLBORE TARGET DETAILS (LAT/LONG)

Name	TVD	+N/-S	+E/-W	Latitude	Longitude	Shape
Puckett 43A-24D Tgt	7151.0	-1233.1	1137.9	39.508062	-108.161686	Point
Puckett 43A-24D BHL	9251.0	-1257.7	1120.7	39.507994	-108.161747	Circle (Radius: 60.0)

CASING DETAILS

TVD	MD	Name	Size
2700.0	2767.6	Surface Casing	

Plan: Plan #1 (Puckett 43A-24D/DD)

Created By: Jon Schweigert Date: 13:34, May 27 2010
 Checked: _____ Date: _____
 Reviewed: _____ Date: _____
 Approved: _____ Date: _____



Database:	RMR1 Database	Local Co-ordinate Reference:	Well Puckett 43A-24D
Company:	Petroleum Development Corp.	TVD Reference:	Puckett 43A-24D KBE @ 8286.0ft (H&P 318)
Project:	Mesa	MD Reference:	Puckett 43A-24D KBE @ 8286.0ft (H&P 318)
Site:	SWNE Sec 24-T6S-R97W	North Reference:	True
Well:	Puckett 43A-24D	Survey Calculation Method:	Minimum Curvature
Wellbore:	DD		
Design:	Plan #1		

Project	Mesa		
Map System:	US State Plane 1983	System Datum:	Mean Sea Level
Geo Datum:	North American Datum 1983		
Map Zone:	Colorado Central Zone		

Site	SWNE Sec 24-T6S-R97W				
Site Position:		Northing:	1,622,184.28 ft	Latitude:	39.511383
From:	Lat/Long	Easting:	2,247,985.44 ft	Longitude:	-108.165789
Position Uncertainty:	0.0 ft	Slot Radius:		Grid Convergence:	-1.68 °

Well	Puckett 43A-24D					
Well Position	+N/-S	23.3 ft	Northing:	1,622,206.99 ft	Latitude:	39.511447
	+E/-W	19.7 ft	Easting:	2,248,005.86 ft	Longitude:	-108.165719
Position Uncertainty		0.0 ft	Wellhead Elevation:		Ground Level:	8,262.0 ft

Wellbore	DD				
Magnetics	Model Name	Sample Date	Declination (°)	Dip Angle (°)	Field Strength (nT)
	IGRF2010-14	2010/05/27	10.56	65.75	52,324

Design	Plan #1			
Audit Notes:				
Version:	Phase:	PROTOTYPE	Tie On Depth:	0.0
Vertical Section:	Depth From (TVD) (ft)	+N/-S (ft)	+E/-W (ft)	Direction (°)
	0.0	0.0	0.0	138.30

Plan Sections										
Measured Depth (ft)	Inclination (°)	Azimuth (°)	Vertical Depth (ft)	+N/-S (ft)	+E/-W (ft)	Dogleg Rate (°/100ft)	Build Rate (°/100ft)	Turn Rate (°/100ft)	TFO (°)	Target
0.0	0.00	0.00	0.0	0.0	0.0	0.00	0.00	0.00	0.00	
200.0	0.00	0.00	200.0	0.0	0.0	0.00	0.00	0.00	0.00	
2,013.9	18.14	137.30	1,983.7	-209.2	193.1	1.00	1.00	0.00	137.30	
5,574.4	18.14	137.30	5,367.3	-1,023.9	944.8	0.00	0.00	0.00	0.00	
7,388.2	0.00	0.00	7,151.0	-1,233.1	1,137.9	1.00	-1.00	0.00	180.00	Puckett 43A-24D Tgt
7,746.2	0.89	214.95	7,508.9	-1,235.4	1,136.3	0.25	0.25	-40.52	214.95	
9,488.5	0.89	214.95	9,251.0	-1,257.7	1,120.7	0.00	0.00	0.00	0.00	Puckett 43A-24D BHL



Petroleum Development Corporation

Nevis Energy Services

Planning Report



Database:	RMR1 Database	Local Co-ordinate Reference:	Well Puckett 43A-24D
Company:	Petroleum Development Corp.	TVD Reference:	Puckett 43A-24D KBE @ 8286.0ft (H&P 318)
Project:	Mesa	MD Reference:	Puckett 43A-24D KBE @ 8286.0ft (H&P 318)
Site:	SWNE Sec 24-T6S-R97W	North Reference:	True
Well:	Puckett 43A-24D	Survey Calculation Method:	Minimum Curvature
Wellbore:	DD		
Design:	Plan #1		

Planned Survey

Measured Depth (ft)	Inclination (°)	Azimuth (°)	Vertical Depth (ft)	Subsea Depth (ft)	+N/-S (ft)	+E/-W (ft)	Vertical Section (ft)	Dogleg Rate (°/100ft)	Build Rate (°/100ft)	Turn Rate (°/100ft)
0.0	0.00	0.00	0.0	-8,286.0	0.0	0.0	0.0	0.00	0.00	0.00
100.0	0.00	0.00	100.0	-8,186.0	0.0	0.0	0.0	0.00	0.00	0.00
KOP @ 200'										
200.0	0.00	0.00	200.0	-8,086.0	0.0	0.0	0.0	0.00	0.00	0.00
300.0	1.00	137.30	300.0	-7,986.0	-0.6	0.6	0.9	1.00	1.00	0.00
400.0	2.00	137.30	400.0	-7,886.0	-2.6	2.4	3.5	1.00	1.00	0.00
500.0	3.00	137.30	499.9	-7,786.1	-5.8	5.3	7.9	1.00	1.00	0.00
600.0	4.00	137.30	599.7	-7,686.3	-10.3	9.5	14.0	1.00	1.00	0.00
700.0	5.00	137.30	699.4	-7,586.6	-16.0	14.8	21.8	1.00	1.00	0.00
800.0	6.00	137.30	798.9	-7,487.1	-23.1	21.3	31.4	1.00	1.00	0.00
900.0	7.00	137.30	898.3	-7,387.7	-31.4	29.0	42.7	1.00	1.00	0.00
1,000.0	8.00	137.30	997.4	-7,288.6	-41.0	37.8	55.8	1.00	1.00	0.00
1,100.0	9.00	137.30	1,096.3	-7,189.7	-51.8	47.8	70.5	1.00	1.00	0.00
1,200.0	10.00	137.30	1,194.9	-7,091.1	-64.0	59.0	87.0	1.00	1.00	0.00
1,300.0	11.00	137.30	1,293.3	-6,992.7	-77.4	71.4	105.3	1.00	1.00	0.00
1,400.0	12.00	137.30	1,391.2	-6,894.8	-92.0	84.9	125.2	1.00	1.00	0.00
1,500.0	13.00	137.30	1,488.9	-6,797.1	-107.9	99.6	146.8	1.00	1.00	0.00
1,600.0	14.00	137.30	1,586.1	-6,699.9	-125.1	115.4	170.2	1.00	1.00	0.00
1,700.0	15.00	137.30	1,682.9	-6,603.1	-143.5	132.4	195.2	1.00	1.00	0.00
1,800.0	16.00	137.30	1,779.3	-6,506.7	-163.1	150.5	221.9	1.00	1.00	0.00
1,900.0	17.00	137.30	1,875.2	-6,410.8	-184.0	169.8	250.3	1.00	1.00	0.00
2,000.0	18.00	137.30	1,970.5	-6,315.5	-206.1	190.2	280.4	1.00	1.00	0.00
EOB = 18.14° Inc										
2,013.9	18.14	137.30	1,983.7	-6,302.3	-209.2	193.1	284.7	1.00	1.00	0.00
2,100.0	18.14	137.30	2,065.6	-6,220.4	-229.0	211.3	311.5	0.00	0.00	0.00
2,200.0	18.14	137.30	2,160.6	-6,125.4	-251.8	232.4	342.6	0.00	0.00	0.00
2,300.0	18.14	137.30	2,255.6	-6,030.4	-274.7	253.5	373.7	0.00	0.00	0.00
2,400.0	18.14	137.30	2,350.7	-5,935.3	-297.6	274.6	404.9	0.00	0.00	0.00
2,500.0	18.14	137.30	2,445.7	-5,840.3	-320.5	295.7	436.0	0.00	0.00	0.00
Wasatch										
2,542.4	18.14	137.30	2,486.0	-5,800.0	-330.2	304.7	449.2	0.00	0.00	0.00
2,600.0	18.14	137.30	2,540.7	-5,745.3	-343.3	316.8	467.1	0.00	0.00	0.00
2,700.0	18.14	137.30	2,635.8	-5,650.2	-366.2	338.0	498.3	0.00	0.00	0.00
Surface Casing										
2,767.6	18.14	137.30	2,700.0	-5,586.0	-381.7	352.2	519.3	0.00	0.00	0.00
2,800.0	18.14	137.30	2,730.8	-5,555.2	-389.1	359.1	529.4	0.00	0.00	0.00
2,900.0	18.14	137.30	2,825.8	-5,460.2	-412.0	380.2	560.5	0.00	0.00	0.00
3,000.0	18.14	137.30	2,920.8	-5,365.2	-434.9	401.3	591.6	0.00	0.00	0.00
3,100.0	18.14	137.30	3,015.9	-5,270.1	-457.7	422.4	622.8	0.00	0.00	0.00
3,200.0	18.14	137.30	3,110.9	-5,175.1	-480.6	443.5	653.9	0.00	0.00	0.00
3,300.0	18.14	137.30	3,205.9	-5,080.1	-503.5	464.6	685.0	0.00	0.00	0.00
3,400.0	18.14	137.30	3,301.0	-4,985.0	-526.4	485.7	716.1	0.00	0.00	0.00
3,500.0	18.14	137.30	3,396.0	-4,890.0	-549.3	506.9	747.3	0.00	0.00	0.00
3,600.0	18.14	137.30	3,491.0	-4,795.0	-572.1	528.0	778.4	0.00	0.00	0.00
3,700.0	18.14	137.30	3,586.1	-4,699.9	-595.0	549.1	809.5	0.00	0.00	0.00
3,800.0	18.14	137.30	3,681.1	-4,604.9	-617.9	570.2	840.7	0.00	0.00	0.00
3,900.0	18.14	137.30	3,776.1	-4,509.9	-640.8	591.3	871.8	0.00	0.00	0.00
4,000.0	18.14	137.30	3,871.2	-4,414.8	-663.7	612.4	902.9	0.00	0.00	0.00
4,100.0	18.14	137.30	3,966.2	-4,319.8	-686.5	633.5	934.0	0.00	0.00	0.00
4,200.0	18.14	137.30	4,061.2	-4,224.8	-709.4	654.6	965.2	0.00	0.00	0.00
4,300.0	18.14	137.30	4,156.2	-4,129.8	-732.3	675.8	996.3	0.00	0.00	0.00
4,400.0	18.14	137.30	4,251.3	-4,034.7	-755.2	696.9	1,027.4	0.00	0.00	0.00
4,500.0	18.14	137.30	4,346.3	-3,939.7	-778.0	718.0	1,058.5	0.00	0.00	0.00
4,600.0	18.14	137.30	4,441.3	-3,844.7	-800.9	739.1	1,089.7	0.00	0.00	0.00

Database:	RMR1 Database	Local Co-ordinate Reference:	Well Puckett 43A-24D
Company:	Petroleum Development Corp.	TVD Reference:	Puckett 43A-24D KBE @ 8286.0ft (H&P 318)
Project:	Mesa	MD Reference:	Puckett 43A-24D KBE @ 8286.0ft (H&P 318)
Site:	SWNE Sec 24-T6S-R97W	North Reference:	True
Well:	Puckett 43A-24D	Survey Calculation Method:	Minimum Curvature
Wellbore:	DD		
Design:	Plan #1		

Planned Survey											
Measured Depth (ft)	Inclination (°)	Azimuth (°)	Vertical Depth (ft)	Subsea Depth (ft)	+N-S (ft)	+E-W (ft)	Vertical Section (ft)	Dogleg Rate (°/100ft)	Build Rate (°/100ft)	Turn Rate (°/100ft)	
Wasatch "G" Sand											
4,636.5	18.14	137.30	4,476.0	-3,810.0	-809.3	746.8	1,101.0	0.00	0.00	0.00	
4,700.0	18.14	137.30	4,536.4	-3,749.6	-823.8	760.2	1,120.8	0.00	0.00	0.00	
4,800.0	18.14	137.30	4,631.4	-3,654.6	-846.7	781.3	1,151.9	0.00	0.00	0.00	
4,900.0	18.14	137.30	4,726.4	-3,559.6	-869.6	802.4	1,183.1	0.00	0.00	0.00	
Fort Union											
4,973.2	18.14	137.30	4,796.0	-3,490.0	-886.3	817.9	1,205.8	0.00	0.00	0.00	
5,000.0	18.14	137.30	4,821.5	-3,464.5	-892.4	823.5	1,214.2	0.00	0.00	0.00	
5,100.0	18.14	137.30	4,916.5	-3,369.5	-915.3	844.7	1,245.3	0.00	0.00	0.00	
5,200.0	18.14	137.30	5,011.5	-3,274.5	-938.2	865.8	1,276.4	0.00	0.00	0.00	
5,300.0	18.14	137.30	5,106.6	-3,179.4	-961.1	886.9	1,307.6	0.00	0.00	0.00	
Base Fort Union											
5,309.9	18.14	137.30	5,116.0	-3,170.0	-963.4	889.0	1,310.7	0.00	0.00	0.00	
5,400.0	18.14	137.30	5,201.6	-3,084.4	-984.0	908.0	1,338.7	0.00	0.00	0.00	
5,500.0	18.14	137.30	5,296.6	-2,989.4	-1,006.8	929.1	1,369.8	0.00	0.00	0.00	
Start of Drop											
5,574.4	18.14	137.30	5,367.3	-2,918.7	-1,023.9	944.8	1,393.0	0.00	0.00	0.00	
5,600.0	17.88	137.30	5,391.7	-2,894.3	-1,029.7	950.2	1,400.9	1.00	-1.00	0.00	
5,700.0	16.88	137.30	5,487.1	-2,798.9	-1,051.6	970.4	1,430.8	1.00	-1.00	0.00	
5,800.0	15.88	137.30	5,583.0	-2,703.0	-1,072.4	989.6	1,459.0	1.00	-1.00	0.00	
5,900.0	14.88	137.30	5,679.4	-2,606.6	-1,091.9	1,007.6	1,485.5	1.00	-1.00	0.00	
6,000.0	13.88	137.30	5,776.3	-2,509.7	-1,110.1	1,024.4	1,510.3	1.00	-1.00	0.00	
6,100.0	12.88	137.30	5,873.6	-2,412.4	-1,127.1	1,040.1	1,533.5	1.00	-1.00	0.00	
6,200.0	11.88	137.30	5,971.3	-2,314.7	-1,142.9	1,054.6	1,554.9	1.00	-1.00	0.00	
6,300.0	10.88	137.30	6,069.3	-2,216.7	-1,157.4	1,068.0	1,574.6	1.00	-1.00	0.00	
Mesaverde/Williams Fk *											
6,378.0	10.10	137.30	6,146.0	-2,140.0	-1,167.8	1,077.7	1,588.8	1.00	-1.00	0.00	
6,400.0	9.88	137.30	6,167.7	-2,118.3	-1,170.6	1,080.2	1,592.6	1.00	-1.00	0.00	
6,500.0	8.88	137.30	6,266.3	-2,019.7	-1,182.6	1,091.3	1,608.9	1.00	-1.00	0.00	
6,600.0	7.88	137.30	6,365.3	-1,920.7	-1,193.3	1,101.2	1,623.5	1.00	-1.00	0.00	
6,700.0	6.88	137.30	6,464.4	-1,821.6	-1,202.8	1,109.9	1,636.4	1.00	-1.00	0.00	
6,800.0	5.88	137.30	6,563.8	-1,722.2	-1,210.9	1,117.4	1,647.5	1.00	-1.00	0.00	
6,900.0	4.88	137.30	6,663.4	-1,622.6	-1,217.8	1,123.8	1,656.9	1.00	-1.00	0.00	
7,000.0	3.88	137.30	6,763.1	-1,522.9	-1,223.4	1,129.0	1,664.5	1.00	-1.00	0.00	
7,100.0	2.88	137.30	6,862.9	-1,423.1	-1,227.8	1,133.0	1,670.4	1.00	-1.00	0.00	
7,200.0	1.88	137.30	6,962.8	-1,323.2	-1,230.8	1,135.8	1,674.6	1.00	-1.00	0.00	
7,300.0	0.88	137.30	7,062.8	-1,223.2	-1,232.6	1,137.4	1,677.0	1.00	-1.00	0.00	
EOD = 0° Inc - Top Gas Cell - Puckett 43A-24D Tgt											
7,388.2	0.00	0.00	7,151.0	-1,135.0	-1,233.1	1,137.9	1,677.6	1.00	-1.00	0.00	
7,400.0	0.03	214.95	7,162.8	-1,123.2	-1,233.1	1,137.9	1,677.6	0.25	0.25	0.00	
7,500.0	0.28	214.95	7,262.8	-1,023.2	-1,233.3	1,137.7	1,677.7	0.25	0.25	0.00	
7,600.0	0.53	214.95	7,362.8	-923.2	-1,233.9	1,137.3	1,677.9	0.25	0.25	0.00	
7,700.0	0.78	214.95	7,462.8	-823.2	-1,234.8	1,136.7	1,678.1	0.25	0.25	0.00	
7,746.2	0.89	214.95	7,508.9	-777.1	-1,235.4	1,136.3	1,678.3	0.25	0.25	0.00	
7,800.0	0.89	214.95	7,562.7	-723.3	-1,236.1	1,135.8	1,678.5	0.00	0.00	0.00	
7,900.0	0.89	214.95	7,662.7	-623.3	-1,237.4	1,134.9	1,678.8	0.00	0.00	0.00	
8,000.0	0.89	214.95	7,762.7	-523.3	-1,238.6	1,134.0	1,679.2	0.00	0.00	0.00	
8,100.0	0.89	214.95	7,862.7	-423.3	-1,239.9	1,133.1	1,679.6	0.00	0.00	0.00	
8,200.0	0.89	214.95	7,962.7	-323.3	-1,241.2	1,132.2	1,679.9	0.00	0.00	0.00	
8,300.0	0.89	214.95	8,062.7	-223.3	-1,242.5	1,131.3	1,680.3	0.00	0.00	0.00	
8,400.0	0.89	214.95	8,162.7	-123.3	-1,243.8	1,130.4	1,680.6	0.00	0.00	0.00	
8,500.0	0.89	214.95	8,262.7	-23.3	-1,245.0	1,129.6	1,681.0	0.00	0.00	0.00	
8,600.0	0.89	214.95	8,362.7	76.7	-1,246.3	1,128.7	1,681.4	0.00	0.00	0.00	



Database:	RMR1 Database	Local Co-ordinate Reference:	Well Puckett 43A-24D
Company:	Petroleum Development Corp.	TVD Reference:	Puckett 43A-24D KBE @ 8286.0ft (H&P 318)
Project:	Mesa	MD Reference:	Puckett 43A-24D KBE @ 8286.0ft (H&P 318)
Site:	SWNE Sec 24-T6S-R97W	North Reference:	True
Well:	Puckett 43A-24D	Survey Calculation Method:	Minimum Curvature
Wellbore:	DD		
Design:	Plan #1		

Planned Survey											
Measured Depth (ft)	Inclination (°)	Azimuth (°)	Vertical Depth (ft)	Subsea Depth (ft)	+N/-S (ft)	+E/-W (ft)	Vertical Section (ft)	Dogleg Rate (°/100ft)	Build Rate (°/100ft)	Turn Rate (°/100ft)	
8,700.0	0.89	214.95	8,462.6	176.6	-1,247.6	1,127.8	1,681.7	0.00	0.00	0.00	
Cameo											
8,788.4	0.89	214.95	8,551.0	265.0	-1,248.7	1,127.0	1,682.0	0.00	0.00	0.00	
8,800.0	0.89	214.95	8,562.6	276.6	-1,248.9	1,126.9	1,682.1	0.00	0.00	0.00	
8,900.0	0.89	214.95	8,662.6	376.6	-1,250.2	1,126.0	1,682.5	0.00	0.00	0.00	
9,000.0	0.89	214.95	8,762.6	476.6	-1,251.4	1,125.1	1,682.8	0.00	0.00	0.00	
9,100.0	0.89	214.95	8,862.6	576.6	-1,252.7	1,124.2	1,683.2	0.00	0.00	0.00	
9,200.0	0.89	214.95	8,962.6	676.6	-1,254.0	1,123.3	1,683.5	0.00	0.00	0.00	
Rollins											
9,288.4	0.89	214.95	9,051.0	765.0	-1,255.1	1,122.5	1,683.9	0.00	0.00	0.00	
9,300.0	0.89	214.95	9,062.6	776.6	-1,255.3	1,122.4	1,683.9	0.00	0.00	0.00	
9,400.0	0.89	214.95	9,162.6	876.6	-1,256.6	1,121.5	1,684.3	0.00	0.00	0.00	
Puckett 43A-24D BHL											
9,488.5	0.89	214.95	9,251.0	965.0	-1,257.7	1,120.7	1,684.6	0.00	0.00	0.00	

Design Targets										
Target Name	Dip Angle (°)	Dip Dir. (°)	TVD (ft)	+N/-S (ft)	+E/-W (ft)	Northing (ft)	Easting (ft)	Latitude	Longitude	
Puckett 43A-24D Tgt	0.00	0.00	7,151.0	-1,233.1	1,137.9	1,620,941.04	2,249,107.09	39.508062	-108.161686	
- hit/miss target										
- Shape										
- plan hits target center										
- Point										
Puckett 43A-24D BHL	0.00	0.00	9,251.0	-1,257.7	1,120.7	1,620,916.96	2,249,089.19	39.507994	-108.161747	
- plan hits target center										
- Circle (radius 60.0)										

Casing Points						
Measured Depth (ft)	Vertical Depth (ft)	Name	Casing Diameter (")	Hole Diameter (")		
2,767.6	2,700.0	Surface Casing				

Formations						
Measured Depth (ft)	Vertical Depth (ft)	Name	Lithology	Dip (°)	Dip Direction (°)	
2,542.4	2,486.0	Wasatch				
4,636.5	4,476.0	Wasatch "G" Sand				
4,973.2	4,796.0	Fort Union				
5,309.9	5,116.0	Base Fort Union				
6,378.0	6,146.0	Mesaverde/Williams Fk	*			
7,388.2	7,151.0	Top Gas Cell				
8,788.4	8,551.0	Cameo				
9,288.4	9,051.0	Rollins				



Database:	RMR1 Database	Local Co-ordinate Reference:	Well Puckett 43A-24D
Company:	Petroleum Development Corp.	TVD Reference:	Puckett 43A-24D KBE @ 8286.0ft (H&P 318)
Project:	Mesa	MD Reference:	Puckett 43A-24D KBE @ 8286.0ft (H&P 318)
Site:	SWNE Sec 24-T6S-R97W	North Reference:	True
Well:	Puckett 43A-24D	Survey Calculation Method:	Minimum Curvature
Wellbore:	DD		
Design:	Plan #1		

Plan Annotations				
Measured Depth (ft)	Vertical Depth (ft)	Local Coordinates		Comment
		+N/-S (ft)	+E/-W (ft)	
200.0	200.0	0.0	0.0	KOP @ 200'
2,013.9	1,983.7	-209.2	193.1	EOB = 18.14° Inc
5,574.4	5,367.3	-1,023.9	944.8	Start of Drop
7,388.2	7,151.0	-1,233.1	1,137.9	EOD = 0° Inc
9,488.5	9,251.0	-1,257.7	1,120.7	TD = 9488.5' MD