



# PROPOSED PIPELINE MAP

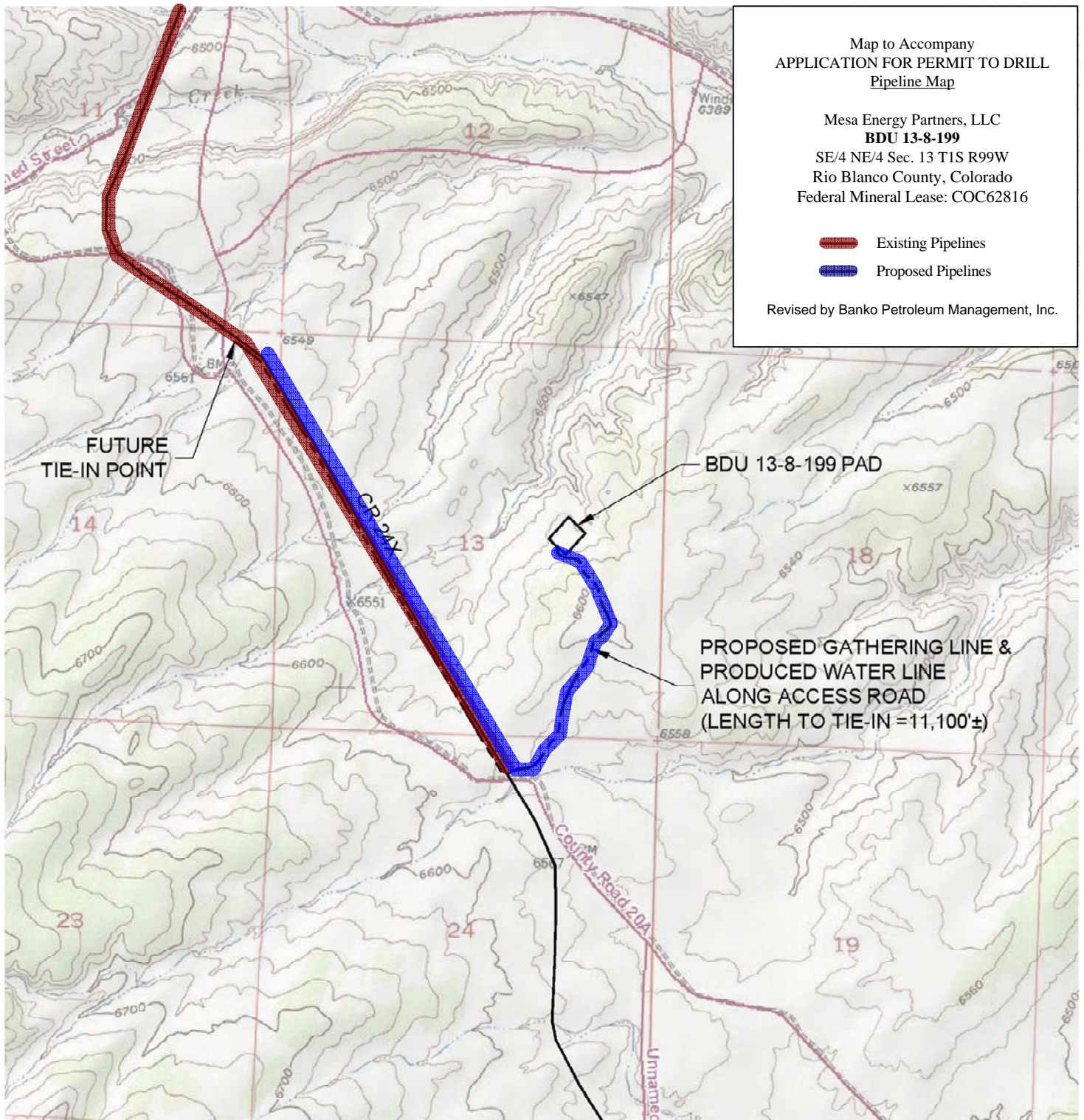
BDU 13-8-199 PAD

Map to Accompany  
APPLICATION FOR PERMIT TO DRILL  
Pipeline Map

Mesa Energy Partners, LLC  
**BDU 13-8-199**  
SE/4 NE/4 Sec. 13 T1S R99W  
Rio Blanco County, Colorado  
Federal Mineral Lease: COC62816

-  Existing Pipelines
-  Proposed Pipelines

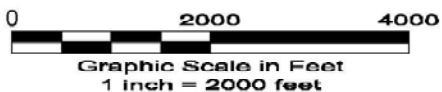
Revised by Banko Petroleum Management, Inc.



12 OF 12 5/28/10



North



LAND SURVEYING AND MAPPING  
LAFAYETTE - WINTER PARK  
Ph 303 666 0379 Fx 303 665 6320

**MESA ENERGY PARTNERS, LLC**  
**BDU 13-8-199**

**SE1/4 NE1/4 SEC. 13 T1S R99W**  
**6th PM RIO BLANCO COUNTY COLORADO**