

# OXY USA WTP LP.

SHELL #797-09-12, #797-09-29A, #797-09-29B & #797-09-37A

LOCATED IN GARFIELD COUNTY, COLORADO

SECTION 9, T7S, R97W, 6th P.M.

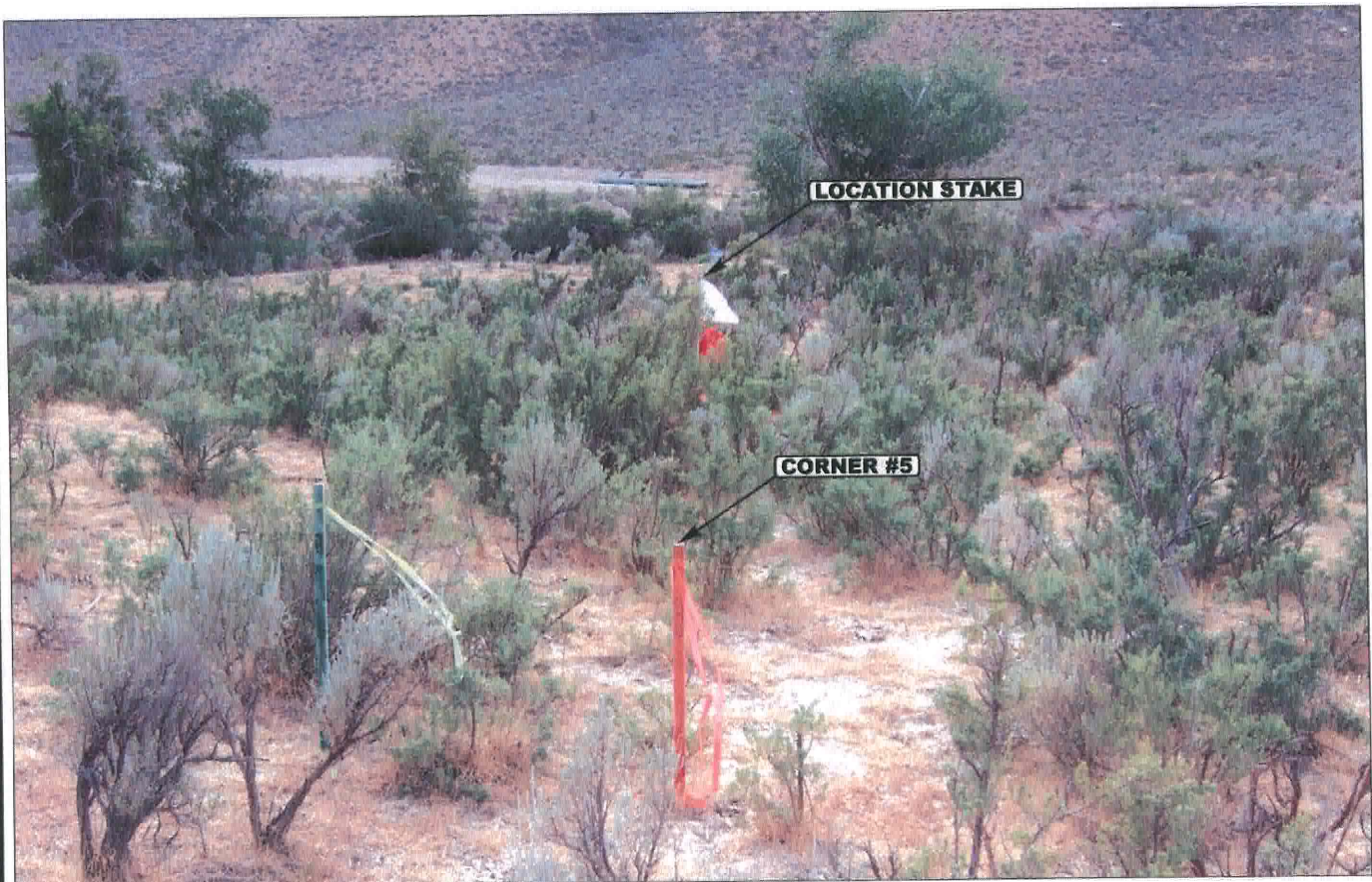


PHOTO: VIEW FROM CORNER #5 TO LOCATION STAKE

CAMERA ANGLE: NORTHWESTERLY



- Since 1964 -

**UELS** Uintah Engineering & Land Surveying  
85 South 200 East Vernal, Utah 84078  
435-789-1017 uels@uelsinc.com

LOCATION PHOTOS

8 2 07  
MONTH DAY YEAR

PHOTO

TAKEN BY: B.J.

DRAWN BY: J.L.G.

REVISED: 00-00-00