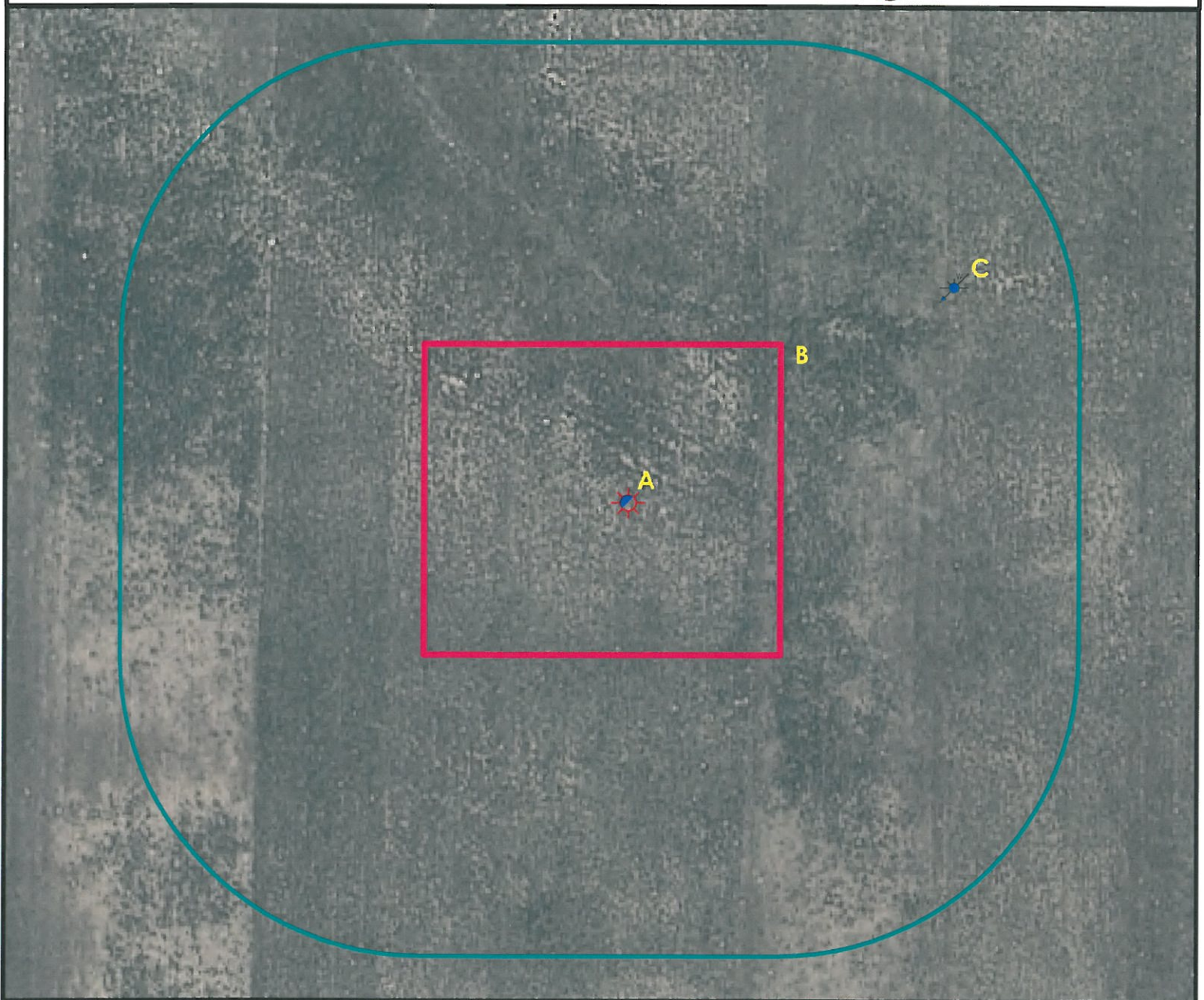


Location Drawing



- A. Proposed Well HOBART 8-67-1-11.
 B. Operational Disturbance Area.
 C. Water Well is 515' NE. (Permit #312).



Legend

- | | |
|----------------------|---------------------|
| Proposed Well | Disturbance Area |
| Existing Well | Building/Residence |
| Plugged Well | Oil & Gas Equipment |
| Water Well | Water Body |
| CattleGuard/Gate | Utility Box |
| Bridge | Railroad |
| ECD | Fence |
| 400' Radius | Overhead Power Line |
| Facilities Enclosure | Pipeline |
| | Access Road |
| | Ditch/Canal |
| | Concrete Ditch |

400ft Radius Map

HOBART 8-67-1-11

Surface Location: T8N R67W S1
 Description of surface use: Open Field

Field Date: 5/13/2010
 Drawing Date: 5/20/2010
 Drafter: CGR
 Checked By: BHF

Aerial Photo supplied by NAIP (2009)

Prepared for:
**ANADARKO E&P
 COMPANY LP**



Use our resources to find yours!
www.petro-fs.com

1801 W. 13th Ave Suite 207
 Denver, CO 80204 Rifle, CO 81650
 (303) 928-7128 (970) 625-4740