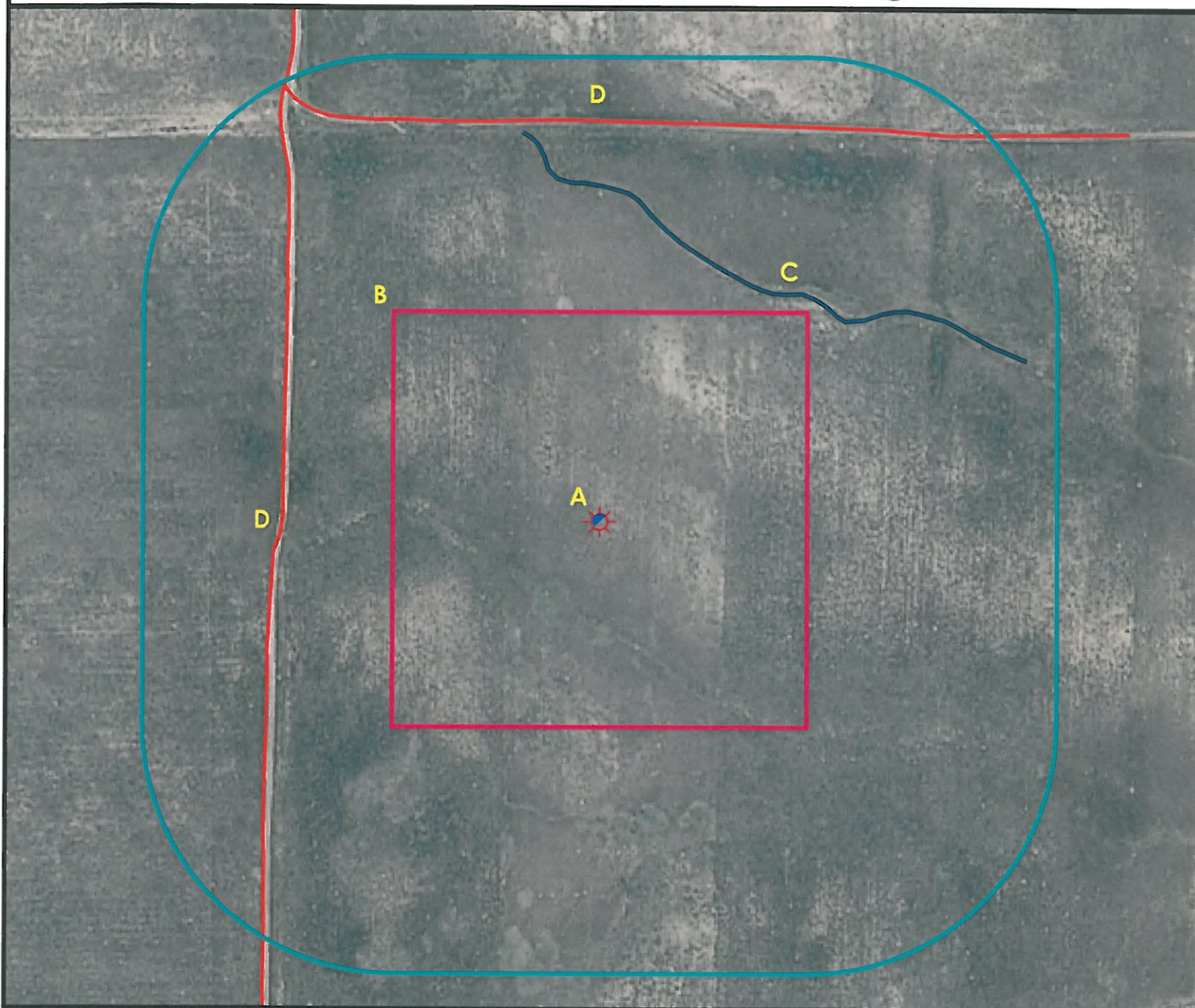


Location Drawing



A. Proposed Well HOBART 8-67-1-4H

D. Existing Private Roads are 505' W and 636' N.

B. Operational Disturbance Area.

** Operational Disturbance Area is 660' x 660' **

C. Ditch is 446' NE.



Legend

- | | | | |
|--|----------------------|--|---------------------|
| | Proposed Well | | Building/Residence |
| | Existing Well | | Disturbance Area |
| | Plugged Well | | Water Body |
| | Water Well | | Utility Box |
| | CattleGuard/Gate | | Railroad |
| | Bridge | | Fence |
| | ECD | | Overhead Power Line |
| | 400' Radius | | Pipeline |
| | Facilities Enclosure | | Private Road |
| | | | Ditch/Canal |
| | | | Concrete Ditch |

400ft Radius Map

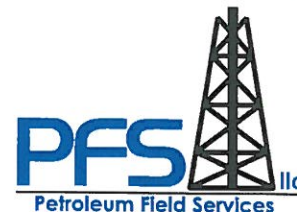
HOBART 8-67-1-4H

Surface Location: T8N R67W S1
Description of surface uses : Open Field

Field Date: 05/13/2010
Drawing Date: 05/14/2010
Drafter: DMM
Checked By: BHF

Aerial Photo supplied by NAIP - 2009

Prepared for:
**ANADARKO E&P
COMPANY LP**



Use our resources to find yours!
www.petro-fs.com

1801 W. 13th Ave Suite 207
Denver, CO 80204
(303) 928-7128
111 E. Third Street
Rifle, CO 81650
(970) 625-4740