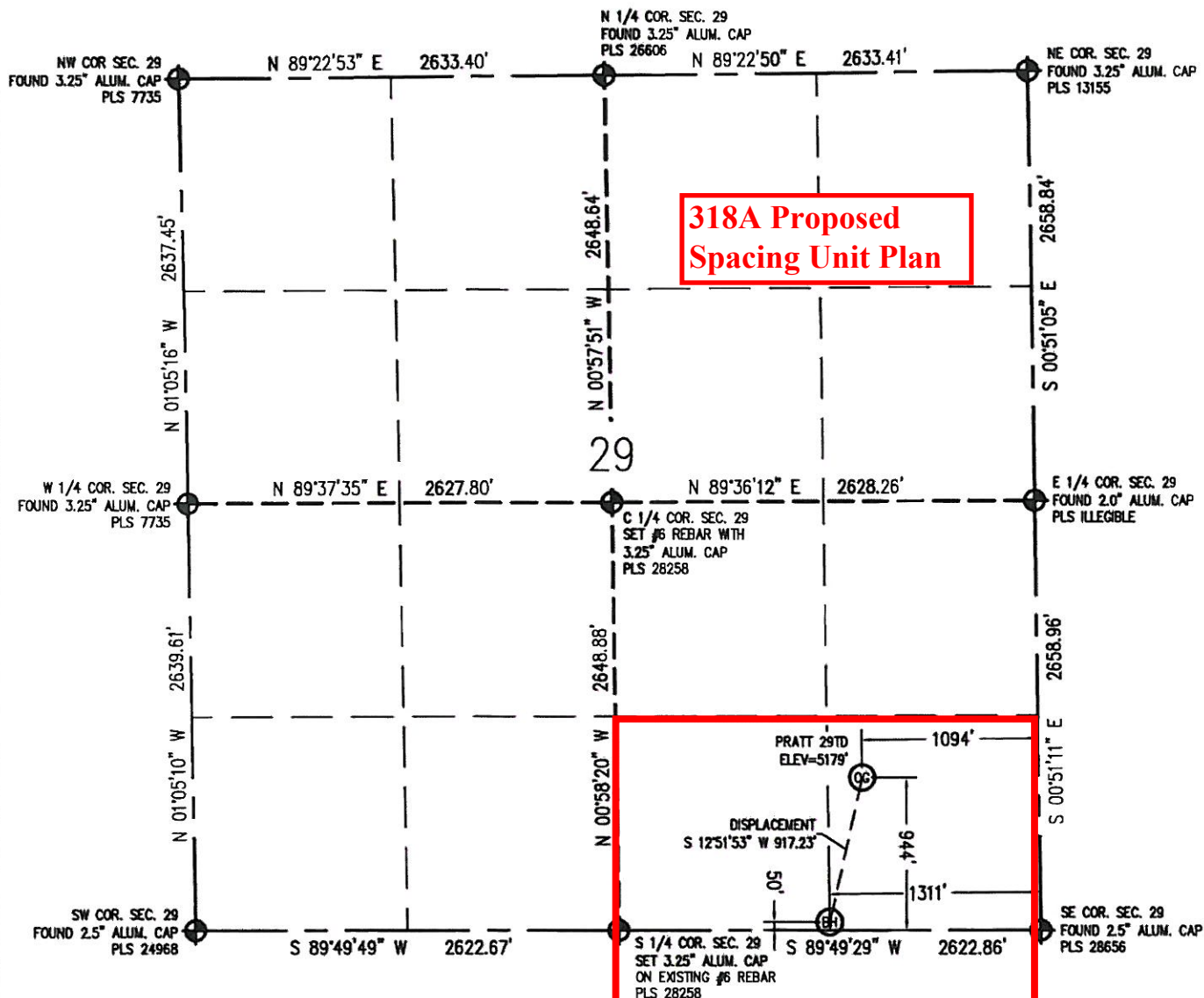


# WELL LOCATION CERTIFICATE

THIS MAP DOES NOT REPRESENT A BOUNDARY SURVEY

SECTION 29  
TOWNSHIP 1 NORTH  
RANGE 68 WEST



IN ACCORDANCE WITH A REQUEST FROM CRAIG RASLUSON - SYNERGY RESOURCES, BASELINE ENGINEERING CORP. HAS DETERMINED THE LOCATION OF THE PRATT 29TD TO BE 944' FSL AND 1094' FEL, AS MEASURED AT NINETY (90) DEGREES FROM THE SECTION LINE OF SECTION 29, TOWNSHIP 1 NORTH, RANGE 68 WEST AND THE BOTTOM HOLE LOCATION TO BE 50' FSL AND 1311' FEL OF SECTION 29, TOWNSHIP 1 NORTH, RANGE 68 WEST, 6TH PRINCIPAL MERIDIAN, WELD COUNTY, COLORADO.

I HEREBY CERTIFY THAT THIS WELL LOCATION CERTIFICATE WAS PREPARED BY ME, OR UNDER MY DIRECT SUPERVISION, THAT THE FIELD WORK WAS COMPLETED ON 3/4/2010, THAT IT IS NOT A LAND SURVEY PLAT OR AN IMPROVEMENT SURVEY PLAT, AND THAT IT IS NOT TO BE RELIED UPON FOR ESTABLISHMENT OF FENCE, BUILDING, OR OTHER FUTURE IMPROVEMENT LINES.

## NOTES:

- 1) LAT/LONG SHOWN ARE BASED ON A GPS OBSERVATION (NAD83).
- 2) BEARINGS SHOWN ARE GRID BEARINGS OF THE COLORADO STATE PLANE COORDINATE SYSTEM, NORTH ZONE, NORTH AMERICAN DATUM 1983/2007.
- 3) GROUND ELEVATIONS ARE BASED ON A GPS OBSERVATION (NAVD 88 DATUM).
- 4) ALL DISTANCES SHOWN ARE FIELD MEASURED UNLESS OTHERWISE NOTED.
- 5) IMPROVEMENTS: SEE VISIBLE IMPROVEMENTS EXHIBIT FOR ALL VISIBLE IMPROVEMENTS WITHIN 400' OF WELL HEAD.
- 6) SURFACE USE: UNDEVELOPED FIELD.
- 7) NEAREST EXISTING WELL: PRATT 29-3 67' NW

## SURFACE HOLE:

LATITUDE: 40.017331° N  
LONGITUDE: 105.022051° W  
PDOP: 2.3  
1/4, 1/4: SE1/4 SE1/4  
NEAREST PROPERTY LINE: 944' S

## BOTTOM HOLE:

LATITUDE: 40.014880° N  
LONGITUDE: 105.022797° W

## LEGEND

- - FOUND/SET SURVEY MONUMENT PER MONUMENT RECORD EXCEPTIONS NOTED.
- - CALCULATED SURVEY MONUMENT POSITION
- (C) - CALCULATED DIMENSION

NOTICE: According to Colorado law you MUST commence any legal action based upon any defect in this WLLC within three years after you first discover such defect. In no event may any action based upon any defect in this WLLC be commenced more than ten years from this said date of the certification shown hereon.



John C. Barickman  
Professional Land Surveyor Registration No. 28258  
State of Colorado  
FOR AND ON BEHALF OF BASELINE ENGINEERING CORP.

Completed  
3/10/2010