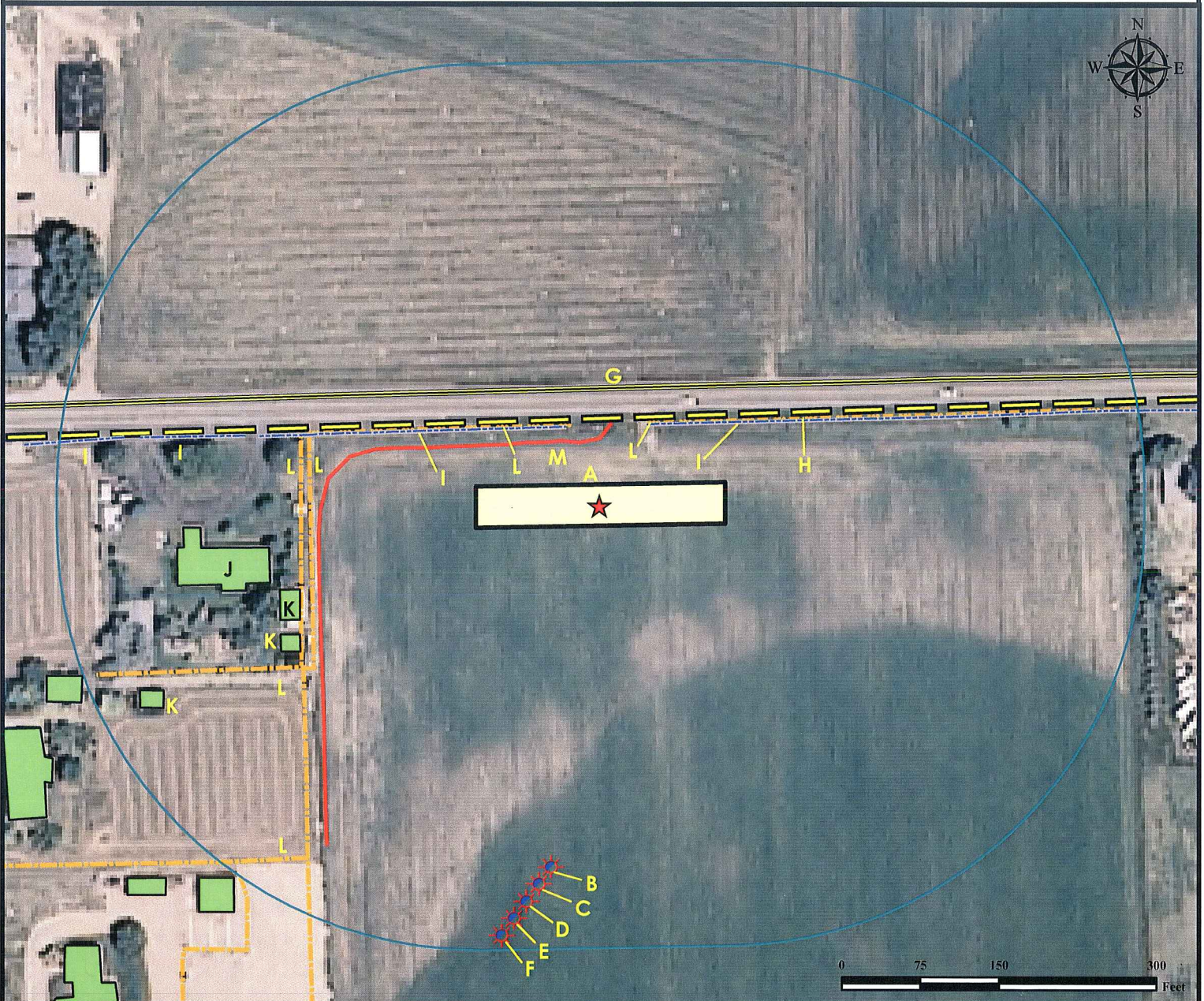


Location Drawing



- A. Proposed Facility AG.
 B. Proposed Well AG 33-11D is 345' SW.
 C. Proposed Well AG 32-31D is 363' SW.
 D. Proposed Well AG 32-41 is 380' SW.
 E. Proposed Well AG 32-45D is 398' SW.
 F. Proposed Well AG 32-32D is 416' SW.
 G. County Road 64 is 110' N.
 H. The Overhead Power Line is 80' N.
 I. The Concrete Walled Irrigation Ditches are 82' NW, 92' NE, 348' NW, and 461' NW.
 J. The Occupied Building is 318' W.
 K. The Out Buildings are 298' SW, 312' SW, and 454' SW.
 L. The Fences are 81' NW, 96' NE, 276' W, 286' W, 355' SW, and 445' SW.
 M. The Access Road is 62' N.

★ All Measurements from Reference Point.
 Latitude: 40.451626
 Longitude: -104.794918
 Coordinates in NAD 83

Legend

- ★ Proposed Well
- ★ Existing Well
- ⊙ Water Well
- Utility Box
- 400' Radius
- ▨ Facilities Enclosure
- Building/Residence
- Water Body
- Fence
- Overhead Power Line
- Pipeline
- Ditch/Canal
- Concrete Walled Ditch
- Access Road
- Proposed Facility
- ★ Reference Point
- ⊙ Proposed Water Tank
- Public Road
- Proposed Flow Line

400ft Radius Map

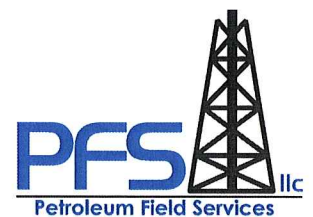
AG Facility

Surface Location: T6N R66W S32
 Description of surface uses : Open Field

Field Date: 05/24/2010
 Drawing Date: 5/27/2010
 Drafter: KLM
 Checked By: BHF
 Revision: 8

Aerial Photo supplied by NAIP - 2009

Prepared for:
**ORR ENERGY
 LLC**



Use our resources to find yours!
www.petro-fs.com

1801 W. 13th Ave Suite 207
 Denver, CO 80204
 (303) 928-7128
 Rifle, CO 81650
 (970) 625-4740