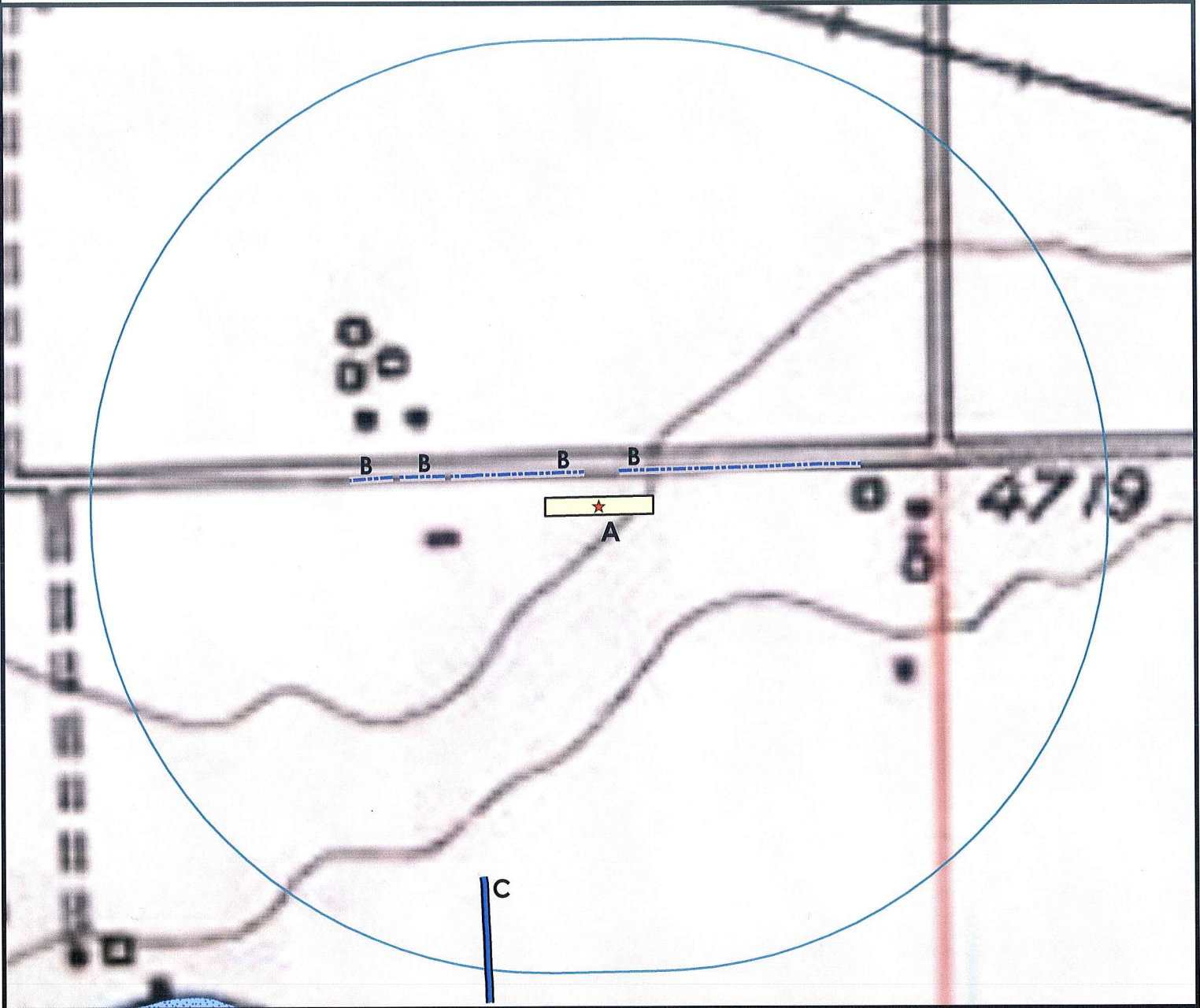


Hydrology Map



A. Proposed Facility AG.

B. Concrete Walled Irrigation Ditches are 82' NW, 92' NE, 348' NW, and 461' NW.

C. The Ditch (Dirt) is 855' SW.



Legend

- | | | | |
|--|-------------------|--|-----------------------|
| | Proposed Well | | Building/Residence |
| | Existing Well | | Oil & Gas Equipment |
| | Water Well | | Water Body |
| | Pedestal | | Utility Box |
| | CattleGuard/Gate | | Railroad |
| | Bridge | | Fence |
| | Reference Point | | Overhead Power Line |
| | 1000' Radius | | Pipeline |
| | Proposed Facility | | Access Road |
| | | | Ditch/Canal |
| | | | Concrete Walled Ditch |

1000ft Radius Map of Surface Water and Riparian Areas

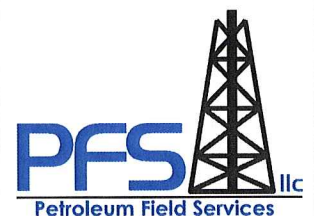
AG Facility

Surface Location: T6N R66W S32

Field Date: 05/24/2010
 Drawing Date: 05/27/2010
 Drafter: KLM
 Checked By: BHF

Aerial Photo supplied by NAIP - 2009

Prepared for:
ORR ENERGY LLC



Use our resources to find yours!
www.petro-fs.com

1801 W. 13th Ave Suite 207
 Denver, CO 80204
 (303) 928-7128
 111 E. Third Street
 Rifle, CO 81650
 (970) 625-4740