



PROPOSED PIPELINE MAP

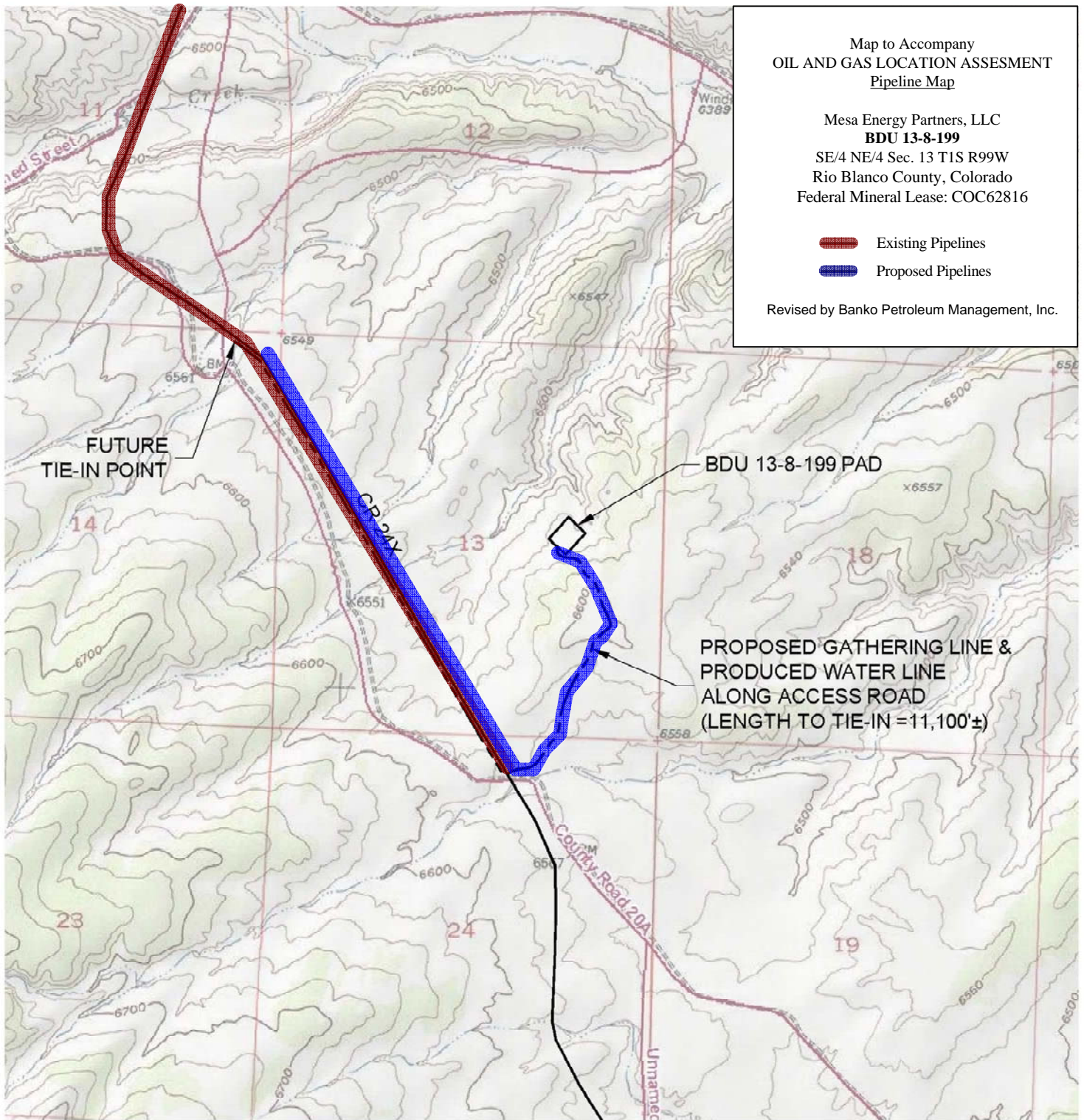
BDU 13-8-199 PAD

Map to Accompany
OIL AND GAS LOCATION ASSESMENT
Pipeline Map

Mesa Energy Partners, LLC
BDU 13-8-199
SE/4 NE/4 Sec. 13 T1S R99W
Rio Blanco County, Colorado
Federal Mineral Lease: COC62816

-  Existing Pipelines
-  Proposed Pipelines

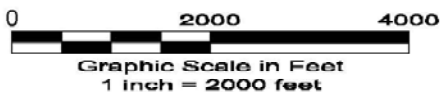
Revised by Banko Petroleum Management, Inc.



12 OF 12 5/28/10



North



LAND SURVEYING AND MAPPING
LAFAYETTE - WINTER PARK
Ph 303 666 0379 Fx 303 665 6320

MESA ENERGY PARTNERS, LLC
BDU 13-8-199

SE1/4 NE1/4 SEC. 13 T1S R99W
6th PM RIO BLANCO COUNTY COLORADO