






VICINITY MAP

BDU 13-8-199 PAD

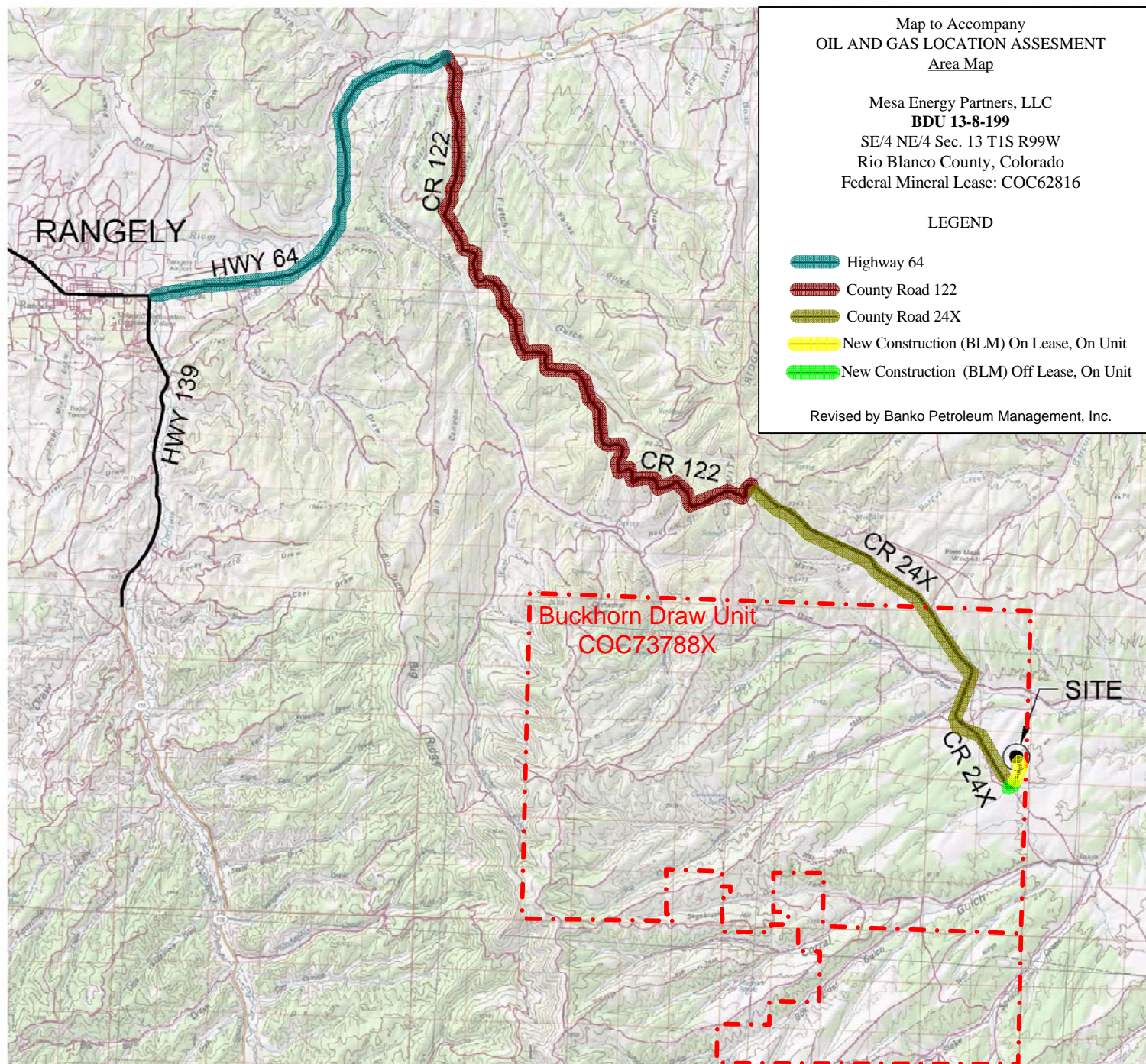
Map to Accompany
OIL AND GAS LOCATION ASSESSMENT
Area Map

Mesa Energy Partners, LLC
BDU 13-8-199
SE/4 NE/4 Sec. 13 T1S R99W
Rio Blanco County, Colorado
Federal Mineral Lease: COC62816

LEGEND

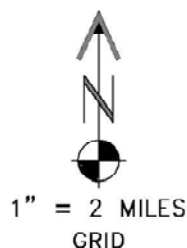
-  Highway 64
-  County Road 122
-  County Road 24X
-  New Construction (BLM) On Lease, On Unit
-  New Construction (BLM) Off Lease, On Unit

Revised by Banko Petroleum Management, Inc.



DRIVING DIRECTIONS:

MP 0.0 - Intersection of Highway 64 & Highway 139; East on Highway 64
MP 9.1 - Right on CR 122, South along CR 122
MP 25.5 - Intersection CR 122 & CR 24X; Continue straight on CR 24X
MP 32.2 - Left on access to BDU 13-8-199 Pad
MP 33.0 - BDU 13-8-199 Pad



10 OF 12 5/28/10

 **GEO SURV**
LAND SURVEYING AND MAPPING
LAFAYETTE - WINTER PARK
Ph 303 666 0379 Fx 303 665 6320

MESA ENERGY PARTNERS, LLC
BDU 13-8-199

SE1/4 NE1/4 SEC. 13 T1S R99W
6th PM RIO BLANCO COUNTY COLORADO