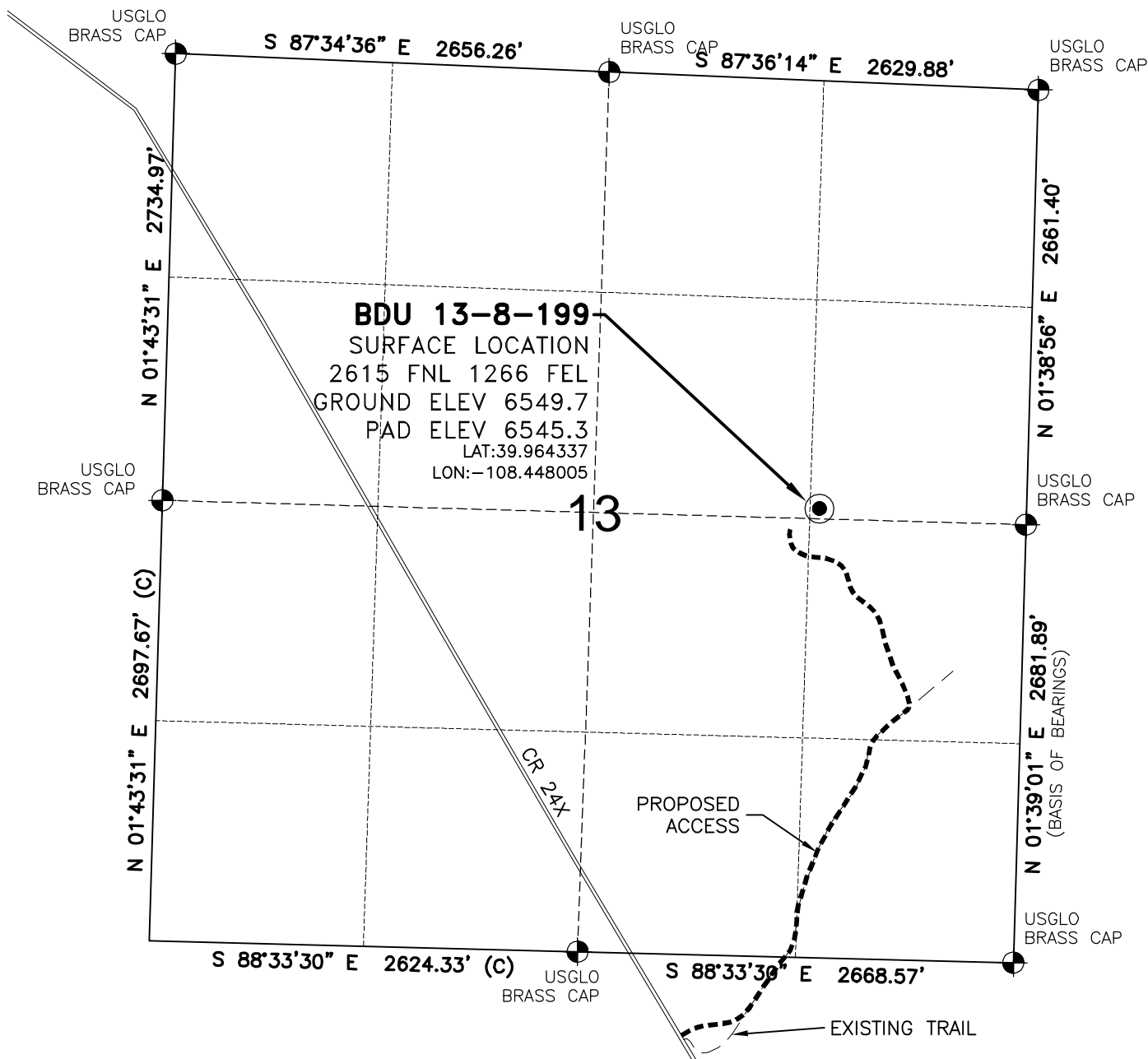


WELL LOCATION MAP

BDU 13-8-199 PAD



SURVEYOR'S STATEMENT

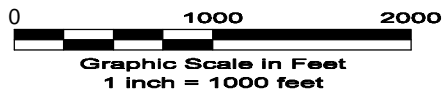
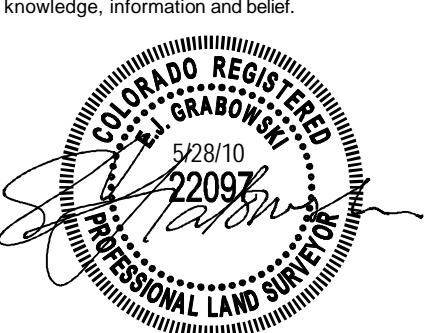
The undersigned hereby states that the well location shown hereon was staked on the ground based on existing monumentation and/or physical evidence found in the field and is correct to the best of my knowledge, information and belief.

NOTES

- 1.) Horizontal and vertical datum, based on NGS control point "KM 0280" with an elevation of 6434. NAVD 1988.
- 2.) All directions, distances, and dimensions shown hereon are based on coordinates from the "Colorado coordinate system of 1983 north zone" (article 52 of title 38, C.R.S.).
- 3.) All section line dimensions shown hereon are based on field measurements of existing monuments and/or physical evidence found in the field unless otherwise indicated. Refer to land survey plats deposited in Rio Blanco County & BLM Survey.
- 4.) Physical features shown hereon are for graphical representation only.
- 5.) See Form 2A for visible improvements within 400' of wellhead.
- 6.) Distances to nearest section lines are measured perpendicularly.
- 7.) This is not a land survey nor land survey plat.
- 8.) Date of Survey 5/19/10 Date of Drawing 5/28/10. REV 0

PDOP Reading: 1.9 Instrument Operator: EJG

1 OF 12 5/28/10



LAND SURVEYING AND MAPPING
LAFAYETTE - WINTER PARK
Ph 303 666 0379 Fx 303 665 6320

MESA ENERGY PARTNERS, LLC
BDU 13-8-199

SE1/4 NE1/4 SEC. 13 T1S R99W
6th PM RIO BLANCO COUNTY COLORADO