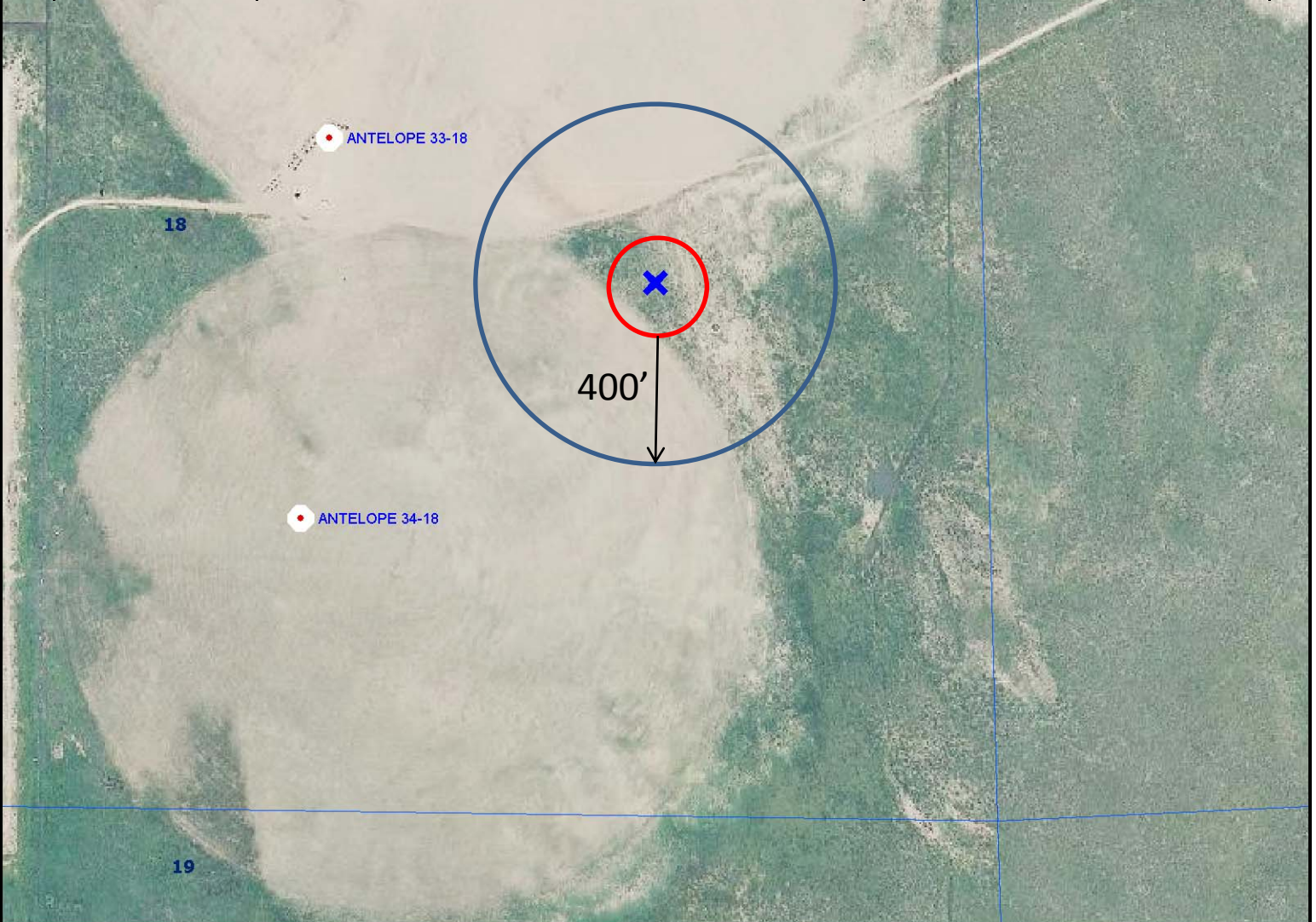
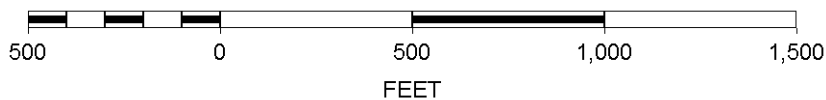


A1	Irrigation Line Vents	129' North
A2	North Edge of Pivot	96' West
A3	Gravel Road	251' North
A4	Stock Tank	204' Southeast



SCALE 1 : 6,000



**BONANZA CREEK ENERGY
OPERATING CO, LLC**

LOCATION DRAWING

May 26, 2010 ksc

Antelope 18I

NE¼ SE ¼ Sec 18 T5N R62W 6th PM
40.39585 N 104.35977 W
850 FEL, 1345 FSL