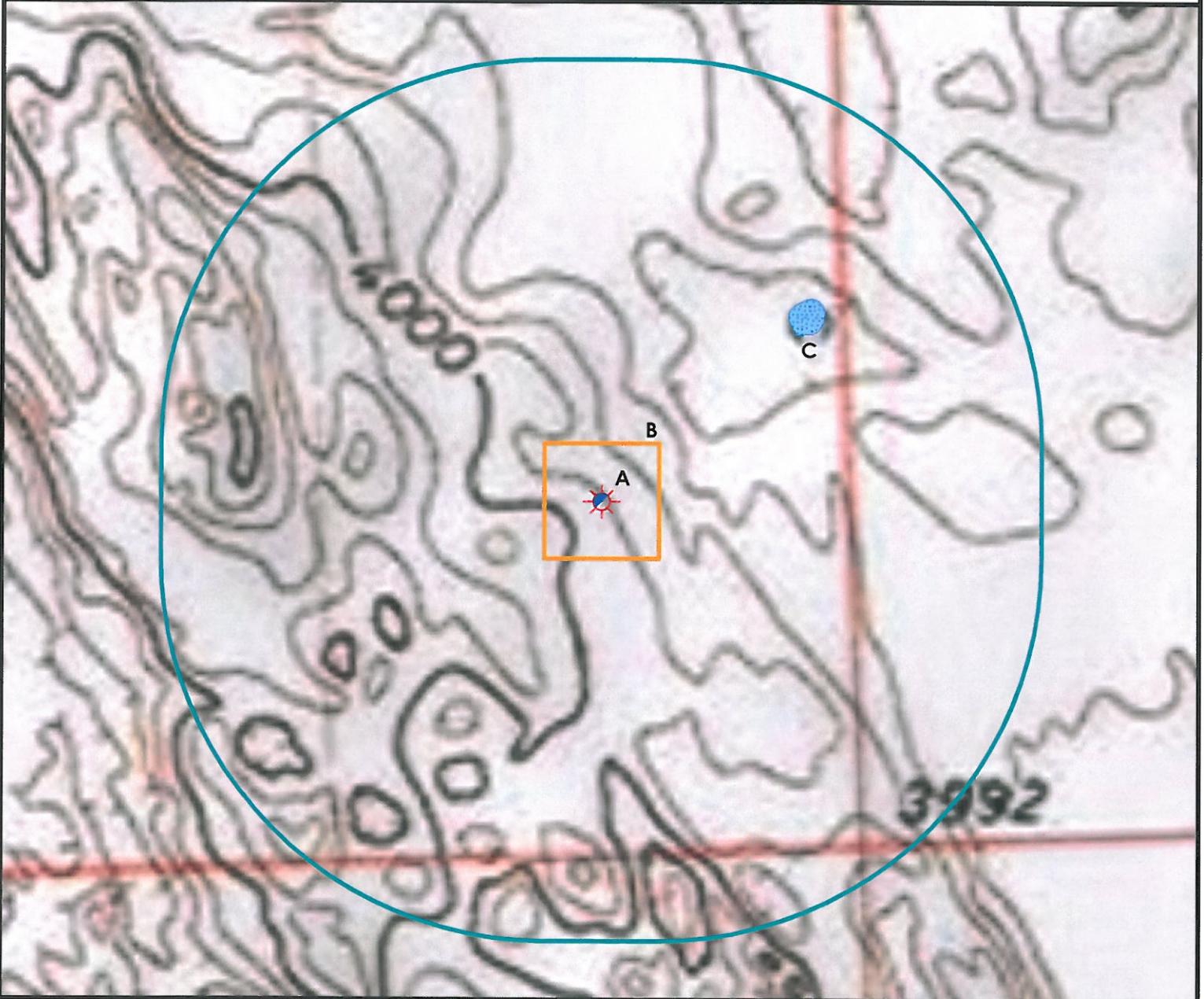


Hydrology Map



- A. Proposed Well WHITE 44-03 1S46W.
- B. Operational Disturbance Area.
- C. Intermittent Pond is 666' NE. Pond not present during mapping.



Legend

- | | |
|----------------------|-----------------------|
| Proposed Well | Building/Residence |
| Existing Well | Oil & Gas Equipment |
| Water Well | Water Body |
| Pivot Pedestal | Utility Box |
| CattleGuard/Gate | Railroad |
| Bridge | Fence |
| Disturbance Area | Overhead Power Line |
| 1000' Radius | Pipeline |
| Facilities Enclosure | County Road |
| | Intermittent Stream |
| | Concrete Walled Ditch |

1000ft Radius Map of Surface Water and Riparian Areas

WHITE 44-03 1S46W

Surface Location: T1S R46W S03



Use our resources to find yours!
www.petro-fs.com

Field Date: 5/6/2010
 Drawing Date: 5/17/2010
 Drafter: DMM
 Checked By: BHF

Topographic data courtesy of USGS

Prepared for:
AUGUSTUS ENERGY PARTNERS, LLC
 P.O. Box 250
 Wray, CO 80758

1801 W. 13th Ave Suite 207
 Denver, CO 80204
 (303) 928-7128
 111 E. Third Street
 Rifle, CO 81650
 (970) 625-4740