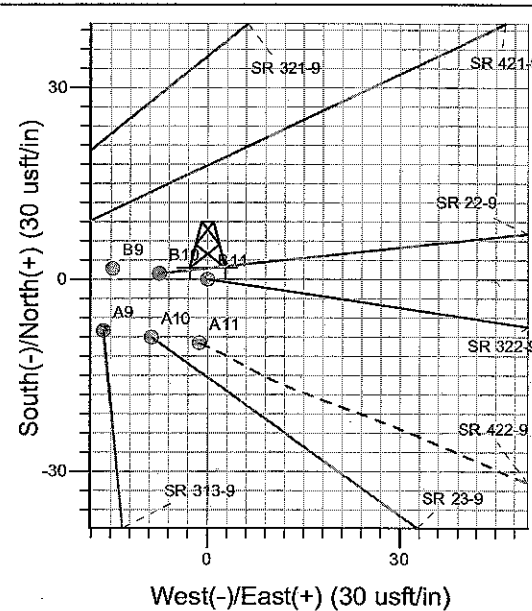
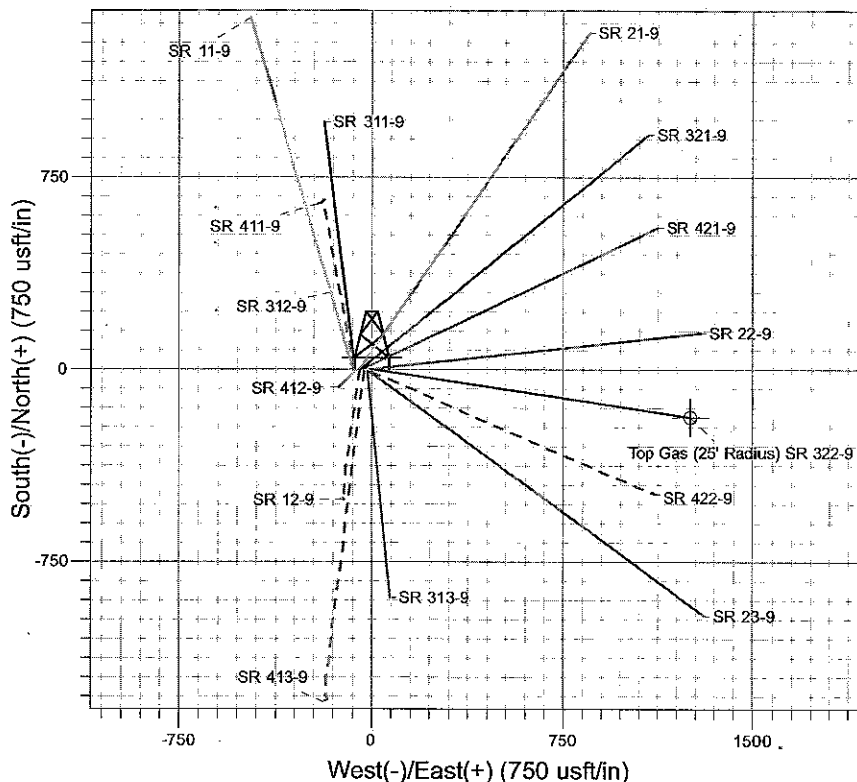
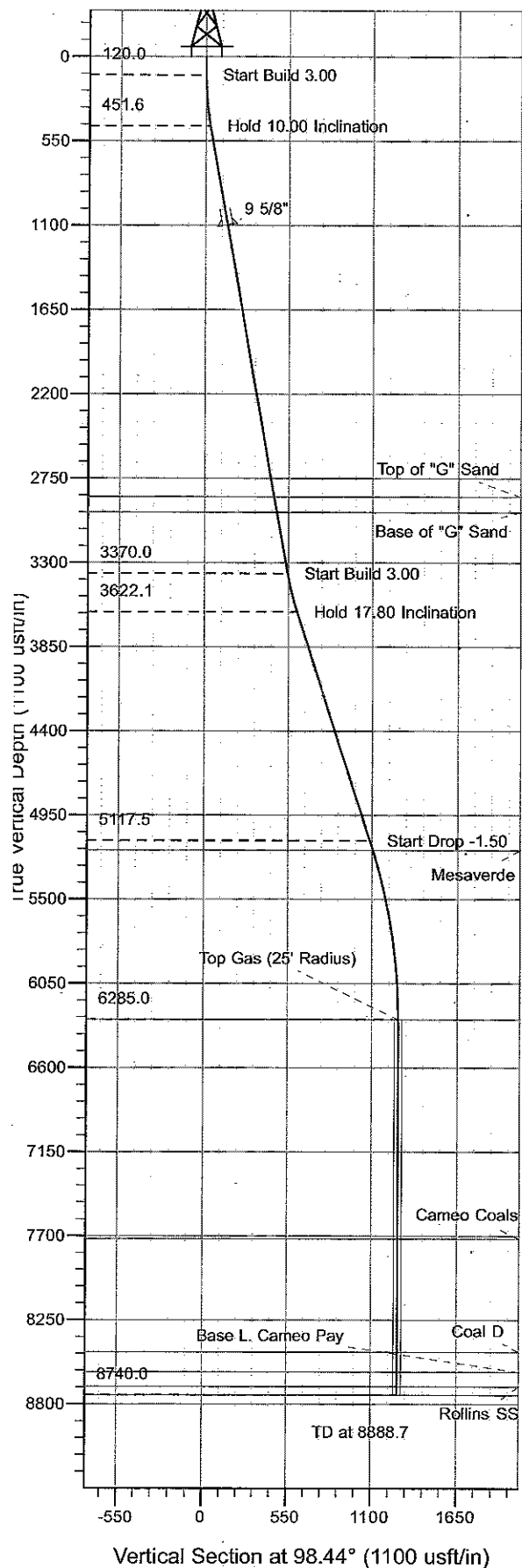




Surface Location: SR 12-9 Pad
 North American Datum 1983 , US State Plane 1983 , Colorado Central Zone
 Ground Elevation: 6575.0
 +N/-S +E/-W Northing Easting Latitude Longitude Slot
 0.0 0.0 1599784.80 2322711.90 39° 27' 20.261 N 107° 53' 56.140 W B11
 Corrected KB @ 6599.0usft (E Rig (24") kjs)



Project: RU 09-07S-094W
 Site: SR 12-9 Pad
 Well: SR 322-9
 Plan #2 21Dec09 kjs

↑ M Azimuths to True North
 Magnetic North: 10.73°
 Magnetic Field
 Strength: 52603.4snT
 Dip Angle: 65.83°
 Date: 1/10/2008
 Model: IGRF2005-10

ANNOTATIONS

TVD	MD	Inc	Azi	+N/-S	+E/-W	VSec	Departure	Annotation
120.0	120.0	0.00	0.00	0.0	0.0	0.0	0.0	Start Build 3.00
451.6	453.3	10.00	98.44	-4.3	28.7	29.0	29.0	Hold 10.00 Inclination
3370.0	3416.7	10.00	98.44	-79.8	537.7	543.6	543.6	Start Build 3.00
3622.1	3676.6	17.80	98.43	-88.9	599.4	606.0	606.0	Hold 17.80 Inclination
5117.5	5247.1	17.80	98.43	-159.3	1074.3	1086.0	1086.0	Start Drop -1.50
6285.0	6433.7	0.00	0.00	-186.1	1255.1	1268.8	1268.8	Top Gas
8740.0	8888.7	0.00	0.00	-186.1	1255.1	1268.8	1268.8	TD at 8888.7

PICEANCE VLY NAD 83

RU 09-07S-094W

SR 12-9 Pad

SR 322-9 - Slot B11

Wellbore #1

Plan: Plan #2 21Dec09 kjs

Standard Planning Report - Geographic

22 December, 2009

Williams

Planning Report - Geographic

Database:	Compass R5000 WIN AUTH	Local Co-ordinate Reference:	Well SR 322-9 - Slot B11
Company:	PICEANCE VLY NAD 83	TVD Reference:	Corrected KB @ 6599.0usft (E Rig (24') kjs)
Project:	RU 09-07S-094W	MD Reference:	Corrected KB @ 6599.0usft (E Rig (24') kjs)
Site:	SR 12-9 Pad	North Reference:	True
Well:	SR 322-9	Survey Calculation Method:	Minimum Curvature
Wellbore:	Wellbore #1		
Design:	Plan #2 21Dec09 kjs		

Project	RU 09-07S-094W, Garfield County, CO		
Map System:	US State Plane 1983	System Datum:	Mean Sea Level
Geo Datum:	North American Datum 1983		
Map Zone:	Colorado Central Zone		Using geodetic scale factor

Site	SR 12-9 Pad		
Site Position:		Northing:	1,599,774.90 usft
From:	Map	Easting:	2,322,710.40 usft
Position Uncertainty:	0.0 usft	Slot Radius:	13.200 in
		Latitude:	39° 27' 20.163 N
		Longitude:	107° 53' 56.155 W
		Grid Convergence:	-1.51 °

Well	SR 322-9 - Slot B11		
Well Position	+N-S	0.0 usft	Northing: 1,599,784.80 usft
	+E-W	0.0 usft	Easting: 2,322,711.90 usft
Position Uncertainty	0.0 usft	Wellhead Elevation:	Latitude: 39° 27' 20.261 N
			Longitude: 107° 53' 56.140 W
			Ground Level: 6,575.0 usft

Wellbore	Wellbore #1		
Magnetics	Model Name	Sample Date	Declination
			(°)
	IGRF2005-10	1/10/2008	10.73
			Dip Angle
			(°)
			65.83
			Field Strength
			(nT)
			52,603

Design	Plan #2 21Dec09 kjs		
Audit Notes:			
Version:	Phase:	PLAN	Tie On Depth: 0.0
Vertical Section:	Depth From (TVD)	+N-S	+E-W
	(usft)	(usft)	(usft)
	0.0	0.0	0.0
			Direction
			(°)
			98.44

Plan Sections										
Measured Depth (usft)	Inclination (°)	Azimuth (°)	Vertical Depth (usft)	+N-S (usft)	+E-W (usft)	Dogleg Rate (°/100usft)	Build Rate (°/100usft)	Turn Rate (°/100usft)	TFO (°)	Target
0.0	0.00	0.00	0.0	0.0	0.0	0.00	0.00	0.00	0.00	
120.0	0.00	0.00	120.0	0.0	0.0	0.00	0.00	0.00	0.00	
453.3	10.00	98.44	451.6	-4.3	28.7	3.00	3.00	0.00	98.44	
3,416.7	10.00	98.44	3,370.0	-79.8	537.7	0.00	0.00	0.00	0.00	
3,676.6	17.80	98.43	3,622.1	-88.9	599.4	3.00	3.00	0.00	0.00	
5,247.1	17.80	98.43	5,117.5	-159.3	1,074.3	0.00	0.00	0.00	0.00	
6,433.7	0.00	0.00	6,285.0	-186.1	1,255.1	1.50	-1.50	0.00	180.00	Top Gas (25' Radius)
8,888.7	0.00	0.00	8,740.0	-186.1	1,255.1	0.00	0.00	0.00	0.00	

Williams

Planning Report - Geographic

Database:	Compass R5000 WIN AUTH	Local Co-ordinate Reference:	Well SR 322-9 - Slot B11
Company:	PICEANCE VLY NAD 83	TVD Reference:	Corrected KB @ 6599.0usft (E Rig (24") kjs)
Project:	RU 09-07S-094W	MD Reference:	Corrected KB @ 6599.0usft (E Rig (24") kjs)
Site:	SR 12-9 Pad	North Reference:	True
Well:	SR 322-9	Survey Calculation Method:	Minimum Curvature
Wellbore:	Wellbore #1		
Design:	Plan #2 21Dec09 kjs		

Planned Survey									
Measured Depth (usft)	Inclination (°)	Azimuth (°)	Vertical Depth (usft)	+N/-S (usft)	+E/-W (usft)	Map Northing (usft)	Map Easting (usft)	Latitude	Longitude
0.0	0.00	0.00	0.0	0.0	0.0	1,599,784.80	2,322,711.90	39° 27' 20.261 N	107° 53' 56.140 W
120.0	0.00	0.00	120.0	0.0	0.0	1,599,784.80	2,322,711.90	39° 27' 20.261 N	107° 53' 56.140 W
Start Build 3.00									
453.3	10.00	98.44	451.6	-4.3	28.7	1,599,779.78	2,322,740.48	39° 27' 20.219 N	107° 53' 55.774 W
Hold 10.00 Inclination									
1,111.7	10.00	98.44	1,100.0	-21.0	141.8	1,599,760.02	2,322,853.08	39° 27' 20.053 N	107° 53' 54.332 W
9 5/8"									
2,909.0	10.00	98.44	2,870.0	-66.8	450.5	1,599,706.08	2,323,160.46	39° 27' 19.601 N	107° 53' 50.396 W
Top of "G" Sand									
3,010.5	10.00	98.44	2,970.0	-69.4	467.9	1,599,703.03	2,323,177.83	39° 27' 19.575 N	107° 53' 50.174 W
Base of "G" Sand									
3,416.7	10.00	98.44	3,370.0	-79.8	537.7	1,599,690.84	2,323,247.30	39° 27' 19.473 N	107° 53' 49.284 W
Start Build 3.00									
3,676.6	17.80	98.43	3,622.1	-88.9	599.4	1,599,680.07	2,323,308.74	39° 27' 19.382 N	107° 53' 48.497 W
Hold 17.80 Inclination									
5,247.1	17.80	98.43	5,117.5	-159.3	1,074.3	1,599,597.17	2,323,781.55	39° 27' 18.686 N	107° 53' 42.444 W
Start Drop -1.50									
5,312.6	16.82	98.43	5,180.0	-162.2	1,093.6	1,599,593.80	2,323,800.74	39° 27' 18.658 N	107° 53' 42.198 W
Mesaverde									
6,433.7	0.00	0.00	6,285.0	-186.1	1,255.1	1,599,565.60	2,323,961.60	39° 27' 18.421 N	107° 53' 40.138 W
Top Gas - Approx. Top Gas									
7,868.7	0.00	0.00	7,720.0	-186.1	1,255.1	1,599,565.60	2,323,961.60	39° 27' 18.421 N	107° 53' 40.138 W
Cameo Coals									
8,608.7	0.00	0.00	8,460.0	-186.1	1,255.1	1,599,565.60	2,323,961.60	39° 27' 18.421 N	107° 53' 40.138 W
Coal D									
8,738.7	0.00	0.00	8,590.0	-186.1	1,255.1	1,599,565.60	2,323,961.60	39° 27' 18.421 N	107° 53' 40.138 W
Base L. Cameo Pay									
8,833.7	0.00	0.00	8,685.0	-186.1	1,255.1	1,599,565.60	2,323,961.60	39° 27' 18.421 N	107° 53' 40.138 W
Rollins SS									
8,888.7	0.00	0.00	8,740.0	-186.1	1,255.1	1,599,565.60	2,323,961.60	39° 27' 18.421 N	107° 53' 40.138 W
TD at 8888.7 - TD									

Design Targets									
Target Name	Dip Angle (°)	Dip Dir. (°)	TVD (usft)	+N/-S (usft)	+E/-W (usft)	Northing (usft)	Easting (usft)	Latitude	Longitude
- hit/miss target									
- Shape									
Top Gas (25' Radius) SF	0.00	0.00	6,285.0	-186.1	1,255.1	1,599,565.60	2,323,961.60	39° 27' 18.421 N	107° 53' 40.138 W
- plan hits target center									
- Circle (radius 25.0)									

Casing Points					
Measured Depth (usft)	Vertical Depth (usft)	Name	Casing Diameter (in)	Hole Diameter (in)	
1,111.7	1,100.0	9 5/8"	9.625	12.250	

Williams

Planning Report - Geographic

Database:	Compass R5000 WIN AUTH	Local Co-ordinate Reference:	Well SR 322-9 - Slot B11
Company:	PICEANCE VLY NAD 83	TVD Reference:	Corrected KB @ 6599.0usft (E Rig (24") kjs)
Project:	RU 09-07S-094W	MD Reference:	Corrected KB @ 6599.0usft (E Rig (24") kjs)
Site:	SR 12-9 Pad	North Reference:	True
Well:	SR 322-9	Survey Calculation Method:	Minimum Curvature
Wellbore:	Wellbore #1		
Design:	Plan #2 21Dec09 kjs		

Formations						
Measured Depth (usft)	Vertical Depth (usft)	Name	Lithology	Dip (°)	Dip Direction (°)	
2,909.0	2,870.0	Top of "G" Sand				
3,010.5	2,970.0	Base of "G" Sand				
5,312.6	5,180.0	Mesaverde				
6,433.7	6,285.0	Approx. Top Gas				
7,868.7	7,720.0	Cameo Coals				
8,608.7	8,460.0	Coal D				
8,738.7	8,590.0	Base L. Cameo Pay				
8,833.7	8,685.0	Rollins SS				
8,888.7	8,740.0	TD				

Plan Annotations					
Measured Depth (usft)	Vertical Depth (usft)	Local Coordinates			
		+N/-S (usft)	+E/-W (usft)	Comment	
120.0	120.0	0.0	0.0	Start Build 3.00	
453.3	451.6	-4.3	28.7	Hold 10.00 Inclination	
3,416.7	3,370.0	-79.8	537.7	Start Build 3.00	
3,676.6	3,622.1	-88.9	599.4	Hold 17.80 Inclination	
5,247.1	5,117.5	-159.3	1,074.3	Start Drop -1.50	
6,433.7	6,285.0	-186.1	1,255.1	Top Gas	
8,888.7	8,740.0	-186.1	1,255.1	TD at 8888.7	