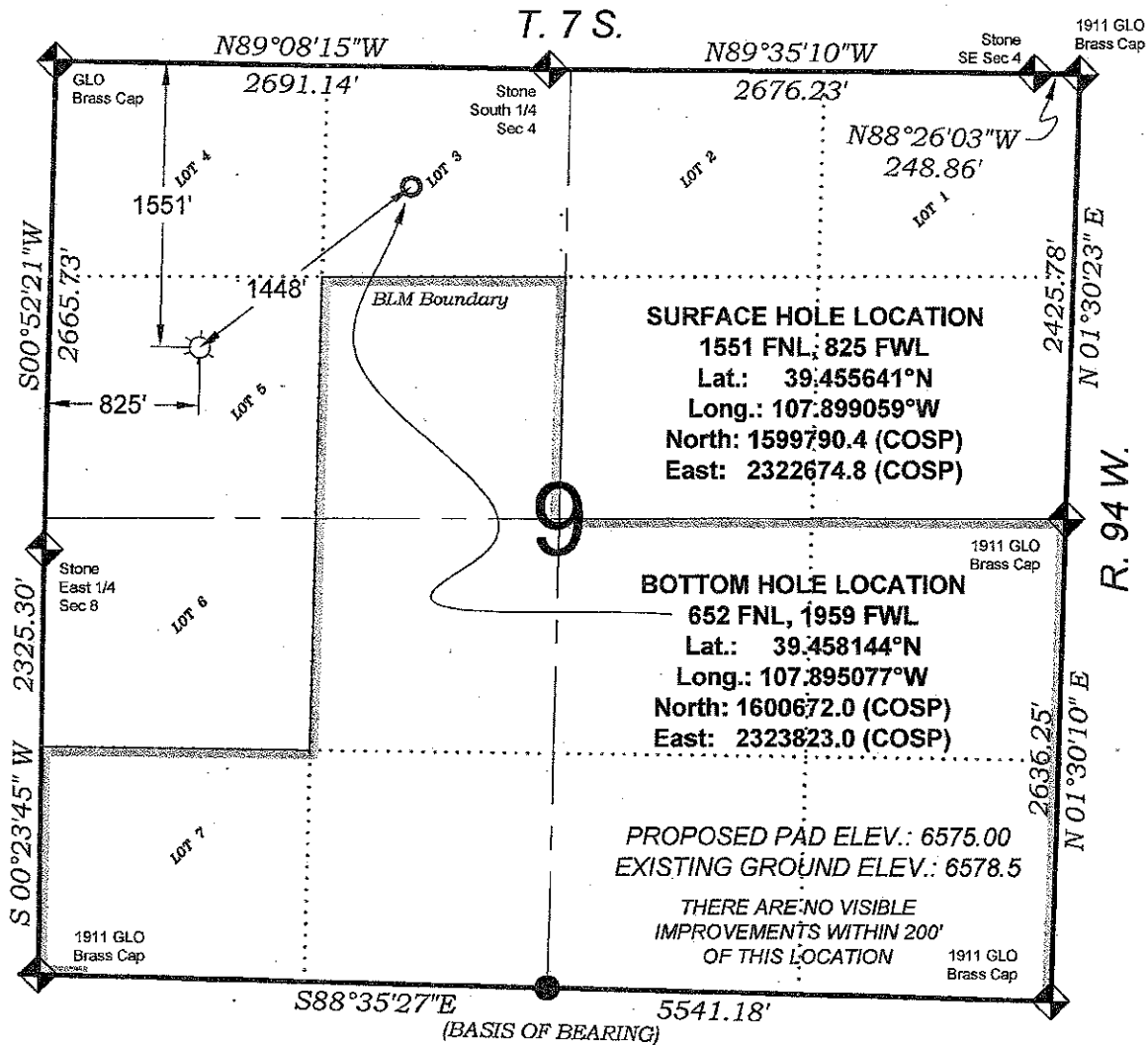


# SAVAGE SR 321-9



## - LEGEND -

FIELD LOCATED SECTION MONUMENTS AS DESCRIBED

FIELD SURVEYED WELL LOCATION

CALCULATED BOTTOM HOLE LOCATION

CALCULATED SECTION CORNER LOCATION

## NOTES

- 1) ELEVATIONS BASED ON N.A.V.D. 1988 PUBLISHED COORDINATE
- 2) LATITUDES AND LONGITUDES ARE BASE ON NAD 83 PUBLISHED COORDINATES
- 3) STATE PLANE COORDINATES ARE BASED ON COLORADO CENTRAL ZONE, U.S. SURVEY FEET.
- 4) ELEVATION MASK SET TO 15"
- 5) GPS OPERATOR J. KIRKPATRICK, OBSERVED A PDOP OF 3.0
- 6) SURFACE AND BOTTOM HOLE LOCATIONS ARE MEASURED 90° FROM SECTION LINES.

## SURVEYORS STATEMENT

I, MICHAEL J. LANGHORNE, A REGISTERED LAND SURVEYOR IN THE STATE OF COLORADO DO HEREBY CERTIFY THAT THE SURVEY SHOWN HEREON WAS PREPARED UNDER MY DIRECT SUPERVISION AND HAS BEEN STAKED ON THE GROUND AS SHOWN ON THE PLAT AND CHECKING THAT THIS MAP IS A TRUE REPRESENTATION THEREOF.

*Michael J. Langhorne*

MICHAEL J. LANGHORNE, COLORADO REGISTRATION NO. 36572  
 FOR AND ON BEHALF OF  
 BOOKCLIFF SURVEY SERVICES, INC.

## REFERENCES

- 1) EXTENSION SURVEY OF T. 7 S., R. 94 W., 6TH P.M. (GLO PLAT)
- 2) U.S.G.S. QUAD: RULISON, CO

REVISED: 3/23/10

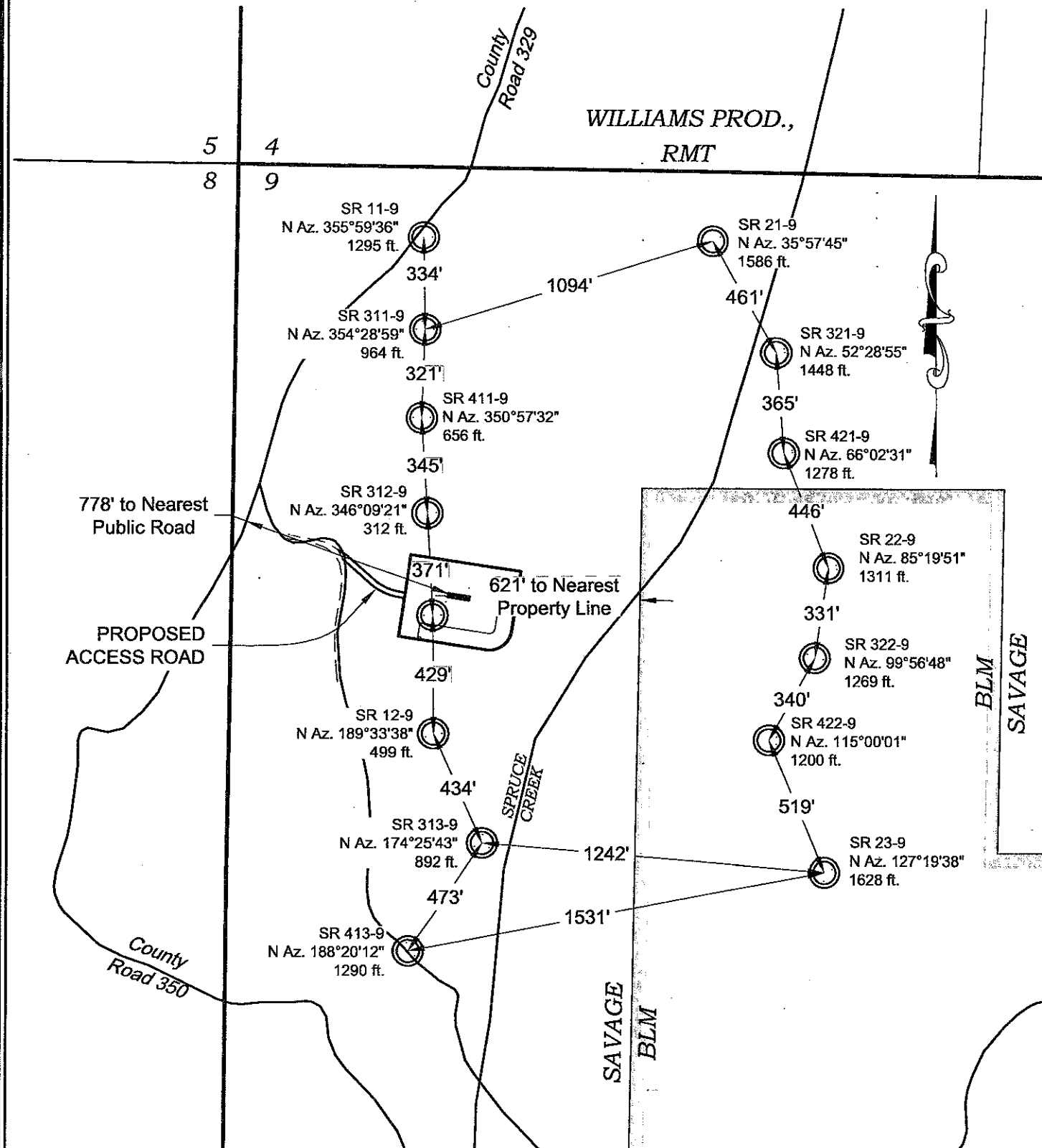
SURVEY DATE: 4/16/08  
 MAP DATE: 5/2/08  
 SCALE: 1" = 1000'  
 SHEET: 1 of 9  
 PROJECT: WILLIAMS

**WELL LOCATION PLAT Prepared for:**  
**Williams Williams Production, RMT**

SW1/4 NW1/4, SECTION 9  
 T. 7S., R. 94 W. of the 6th. P.M.  
 GARFIELD COUNTY, COLORADO

Book Cliff Survey Services, Inc.  
 10100 E. 1st Ave.  
 Suite 100, Colorado 81602  
 Ph: (970) 625-1330  
 Fax: (970) 625-2773

**BOOKCLIFF**  
 Survey Services, Inc.



REVISED: 4/12/10

SCALE: 1" = 80'  
DATE: 5/5/08  
SHEET: 6 of 9  
PROJECT: WILLIAMS  
DFT: DPM

Construction Plan Prepared for:  
**Williams.** Williams Production, RMT

Federal SR 12-9 - Sheet 6  
RECLAIMED PAD &  
PRODUCTION EQUIPMENT

136 East Third Street  
Rifle, Colorado 81650  
Ph. (970) 625-1330  
Fax (970) 625-2773



**BOOKCLIFF**  
Survey Services, Inc.