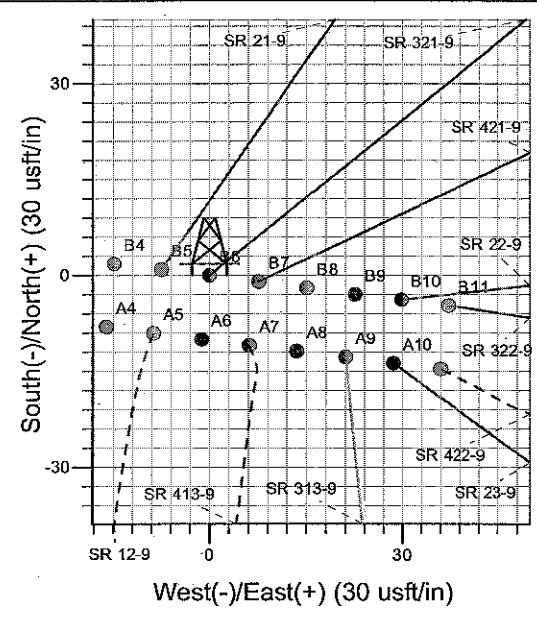
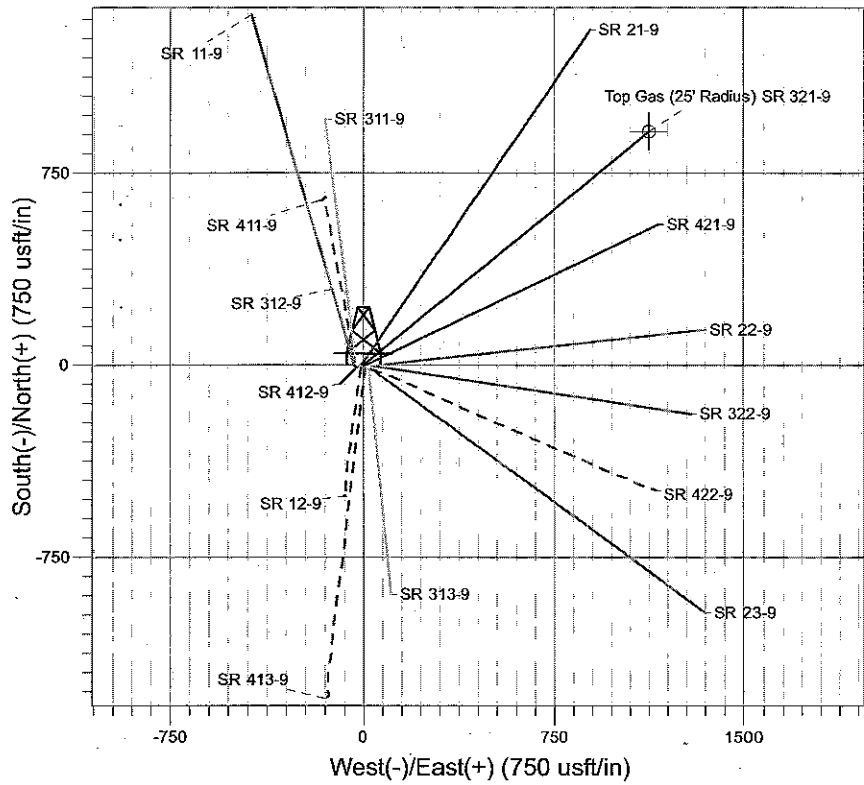
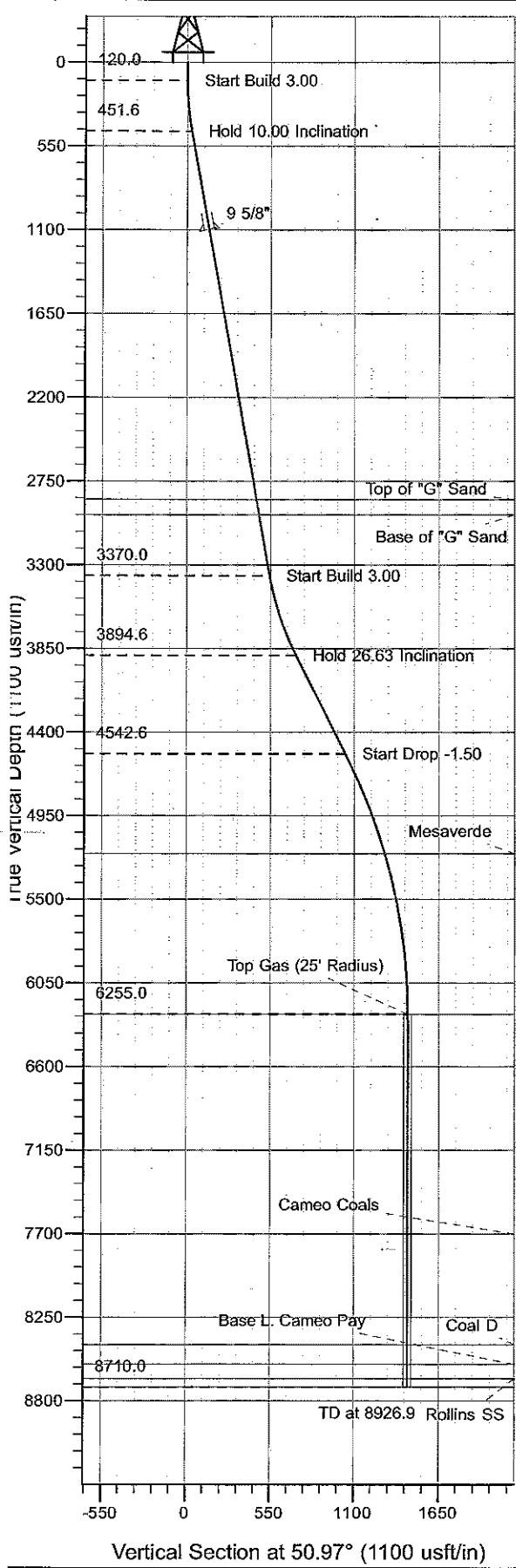




Surface Location: SR 12-9 Pad
 North American Datum 1983 , US State Plane 1983 , Colorado Central Zone
 Ground Elevation: 6575.0
 +N/-S 0.0 +E/-W 0.0 Northing 1599790.50 Easting 2322674.80 Latitude 39° 27' 20.308 N Longitude 107° 53' 56.614 W Slot B6
 Corrected KB @ 6599.0usft (E Rig (24') kjs)



Project: RU 09-07S-094W
 Site: SR 12-9 Pad
 Well: SR 321-9
 Plan #2 21Dec09 kjs

M Azimuths to True North
 Magnetic North: 10.73°
 Magnetic Field
 Strength: 52603.4snT
 Dip Angle: 65.83°
 Date: 1/10/2008
 Model: IGRF2005-10

ANNOTATIONS									
TVD	MD	Inc	Azi	+N/-S	+E/-W	VSec	Departure	Annotation	
120.0	120.0	0.00	0.00	0.0	0.0	0.0	0.0	Start Build 3.00	
451.6	453.3	10.00	50.97	18.3	22.5	29.0	29.0	Hold 10.00 Inclination	
3370.0	3416.7	10.00	50.97	342.3	422.3	543.6	543.6	Start Build 3.00	
3894.6	3971.2	26.64	50.97	451.7	557.2	717.3	717.3	Hold 26.63 Inclination	
4542.6	4696.2	26.64	50.97	656.3	809.7	1042.3	1042.3	Start Drop -1.50	
6255.0	6471.9	0.00	0.00	911.6	1124.6	1447.6	1447.6	Top Gas	
8710.0	8926.9	0.00	0.00	911.6	1124.6	1447.6	1447.6	TD at 8926.9	

PICEANCE VLY NAD 83

RU 09-07S-094W

SR 12-9 Pad

SR 321-9 - Slot B6

Wellbore #1

Plan: Plan #2 21Dec09 kjs

Standard Planning Report - Geographic

22 December, 2009

Williams
Planning Report - Geographic

Database:	Compass R5000 WIN AUTH	Local Co-ordinate Reference:	Well SR 321-9 - Slot B6
Company:	PICEANCE VLY NAD 83	TVD Reference:	Corrected KB @ 6599.0usft (E Rig (24') kjs)
Project:	RU 09-07S-094W	MD Reference:	Corrected KB @ 6599.0usft (E Rig (24') kjs)
Site:	SR 12-9 Pad	North Reference:	True
Well:	SR 321-9	Survey Calculation Method:	Minimum Curvature
Wellbore:	Wellbore #1		
Design:	Plan #2 21Dec09 kjs		

Project	RU 09-07S-094W, Garfield County, CO		
Map System:	US State Plane 1983	System Datum:	Mean Sea Level
Geo Datum:	North American Datum 1983		
Map Zone:	Colorado Central Zone		Using geodetic scale factor

Site	SR 12-9 Pad			
Site Position:		Northing:	1,599,774.90 usft	Latitude: 39° 27' 20.163 N
From:	Map	Easting:	2,322,710.40 usft	Longitude: 107° 53' 56.155 W
Position Uncertainty:	0.0 usft	Slot Radius:	13.200 in	Grid Convergence: -1.51 °

Well	SR 321-9 - Slot B6			
Well Position	+N/-S	0.0 usft	Northing:	1,599,790.50 usft
	+E/-W	0.0 usft	Easting:	2,322,674.80 usft
Position Uncertainty	0.0 usft		Wellhead Elevation:	Ground Level: 6,575.0 usft

Wellbore	Wellbore #1				
Magnetics	Model Name	Sample Date	Declination (°)	Dip Angle (°)	Field Strength (nT)
	IGRF2005-10	1/10/2008	10.73	65.83	52,603

Design	Plan #2 21Dec09 kjs			
Audit Notes:				
Version:	Phase:	PLAN	Tie On Depth:	0.0
Vertical Section:	Depth From (TVD) (usft)	+N/-S (usft)	+E/-W (usft)	Direction (°)
	0.0	0.0	0.0	50.97

Plan Sections										
Measured Depth (usft)	Inclination (°)	Azimuth (°)	Vertical Depth (usft)	+N/-S (usft)	+E/-W (usft)	Dogleg Rate (°/100usft)	Build Rate (°/100usft)	Turn Rate (°/100usft)	TFO (°)	Target
0.0	0.00	0.00	0.0	0.0	0.0	0.00	0.00	0.00	0.00	
120.0	0.00	0.00	120.0	0.0	0.0	0.00	0.00	0.00	0.00	
453.3	10.00	50.97	451.6	18.3	22.5	3.00	3.00	0.00	50.97	
3,416.7	10.00	50.97	3,370.0	342.3	422.3	0.00	0.00	0.00	0.00	
3,971.2	26.64	50.97	3,894.6	451.7	557.2	3.00	3.00	0.00	0.00	
4,696.2	26.64	50.97	4,542.6	656.3	809.7	0.00	0.00	0.00	0.00	
6,471.9	0.00	0.00	6,255.0	911.6	1,124.6	1.50	-1.50	0.00	180.00	Top Gas (25' Radius)
8,926.9	0.00	0.00	8,710.0	911.6	1,124.6	0.00	0.00	0.00	0.00	

Williams
Planning Report - Geographic

Database:	Compass R5000 WIN AUTH	Local Co-ordinate Reference:	Well SR 321-9 - Slot B6
Company:	PICEANCE VLY NAD 83	TVD Reference:	Corrected KB @ 6599.0usft (E Rig (24') kjs)
Project:	RU 09-07S-094W	MD Reference:	Corrected KB @ 6599.0usft (E Rig (24') kjs)
Site:	SR 12-9 Pad	North Reference:	True
Well:	SR 321-9	Survey Calculation Method:	Minimum Curvature
Wellbore:	Wellbore #1		
Design:	Plan #2 21Dec09 kjs		

Planned Survey										
Measured Depth (usft)	Inclination (°)	Azimuth (°)	Vertical Depth (usft)	+N/-S (usft)	+E/-W (usft)	Map Northing (usft)	Map Easting (usft)	Latitude	Longitude	
0.0	0.00	0.00	0.0	0.0	0.0	1,599,790.50	2,322,674.80	39° 27' 20.308 N	107° 53' 56.614 W	
120.0	0.00	0.00	120.0	0.0	0.0	1,599,790.50	2,322,674.80	39° 27' 20.308 N	107° 53' 56.614 W	
Start Build 3.00										
453.3	10.00	50.97	451.6	18.3	22.5	1,599,808.17	2,322,697.81	39° 27' 20.488 N	107° 53' 56.327 W	
Hold 10.00 Inclination										
1,111.7	10.00	50.97	1,100.0	90.3	111.3	1,599,877.78	2,322,788.49	39° 27' 21.200 N	107° 53' 55.195 W	
9 5/8"										
2,909.0	10.00	50.97	2,870.0	286.8	353.8	1,600,067.84	2,323,036.03	39° 27' 23.142 N	107° 53' 52.104 W	
Top of "G" Sand										
3,010.5	10.00	50.97	2,970.0	297.9	367.5	1,600,078.58	2,323,050.01	39° 27' 23.252 N	107° 53' 51.929 W	
Base of "G" Sand										
3,416.7	10.00	50.97	3,370.0	342.3	422.3	1,600,121.53	2,323,105.95	39° 27' 23.691 N	107° 53' 51.231 W	
Start Build 3.00										
3,971.2	26.64	50.97	3,894.6	451.7	557.2	1,600,227.27	2,323,243.69	39° 27' 24.772 N	107° 53' 49.511 W	
Hold 26.63 Inclination										
4,696.2	26.64	50.97	4,542.6	656.3	809.7	1,600,425.18	2,323,501.49	39° 27' 26.794 N	107° 53' 46.291 W	
Start Drop -1.50										
5,403.0	16.03	50.97	5,200.0	818.0	1,009.1	1,600,581.52	2,323,705.15	39° 27' 28.392 N	107° 53' 43.748 W	
Mesaverde										
6,471.9	0.00	0.00	6,255.0	911.6	1,124.6	1,600,672.00	2,323,823.00	39° 27' 29.317 N	107° 53' 42.277 W	
Top Gas - Approx. Top Gas										
7,916.9	0.00	0.00	7,700.0	911.6	1,124.6	1,600,672.00	2,323,823.00	39° 27' 29.317 N	107° 53' 42.277 W	
Cameo Coals										
8,646.9	0.00	0.00	8,430.0	911.6	1,124.6	1,600,672.00	2,323,823.00	39° 27' 29.317 N	107° 53' 42.277 W	
Coal D										
8,776.9	0.00	0.00	8,560.0	911.6	1,124.6	1,600,672.00	2,323,823.00	39° 27' 29.317 N	107° 53' 42.277 W	
Base L. Cameo Pay										
8,871.9	0.00	0.00	8,655.0	911.6	1,124.6	1,600,672.00	2,323,823.00	39° 27' 29.317 N	107° 53' 42.277 W	
Rollins SS										
8,926.9	0.00	0.00	8,710.0	911.6	1,124.6	1,600,672.00	2,323,823.00	39° 27' 29.317 N	107° 53' 42.277 W	
TD										

Design Targets										
Target Name	Dip Angle (°)	Dip Dir. (°)	TVD (usft)	+N/-S (usft)	+E/-W (usft)	Northing (usft)	Easting (usft)	Latitude	Longitude	
- hit/miss target										
- Shape										
Top Gas (25' Radius) SF	0.00	0.00	6,255.0	911.6	1,124.6	1,600,672.00	2,323,823.00	39° 27' 29.317 N	107° 53' 42.277 W	
- plan hits target center										
- Circle (radius 25.0)										

Casing Points					
Measured Depth (usft)	Vertical Depth (usft)	Name	Casing Diameter (in)	Hole Diameter (in)	
1,111.7	1,100.0	9 5/8"	9.625	12.250	

Williams

Planning Report - Geographic

Database:	Compass R5000 WIN AUTH	Local Co-ordinate Reference:	Well SR 321-9 - Slot B6
Company:	PICEANCE VLY NAD 83	TVD Reference:	Corrected KB @ 6599.0usft (E Rig (24') kjs)
Project:	RU 09-07S-094W	MD Reference:	Corrected KB @ 6599.0usft (E Rig (24') kjs)
Site:	SR 12-9 Pad	North Reference:	True
Well:	SR 321-9	Survey Calculation Method:	Minimum Curvature
Wellbore:	Wellbore #1		
Design:	Plan #2 21Dec09 kjs		

Formations						
	Measured Depth (usft)	Vertical Depth (usft)	Name	Lithology	Dip (°)	Dip Direction (°)
	2,909.0	2,870.0	Top of "G" Sand			
	3,010.5	2,970.0	Base of "G" Sand			
	5,403.0	5,200.0	Mesaverde			
	6,471.9	6,255.0	Approx. Top Gas			
	7,916.9	7,700.0	Cameo Coals			
	8,646.9	8,430.0	Coal D			
	8,776.9	8,560.0	Base L. Cameo Pay			
	8,871.9	8,655.0	Rollins SS			
	8,926.9	8,710.0	TD			

Plan Annotations					
	Measured Depth (usft)	Vertical Depth (usft)	Local Coordinates		Comment
			+N/-S (usft)	+E/-W (usft)	
	120.0	120.0	0.0	0.0	Start Build 3.00
	453.3	451.6	18.3	22.5	Hold 10.00 Inclination
	3,416.7	3,370.0	342.3	422.3	Start Build 3.00
	3,971.2	3,894.6	451.7	557.2	Hold 26.63 Inclination
	4,696.2	4,542.6	656.3	809.7	Start Drop -1.50
	6,471.9	6,255.0	911.6	1,124.6	Top Gas
	8,926.9	8,710.0	911.6	1,124.6	TD at 8926.9