

**BAKER & ASSOCIATES**

Engineers \* Surveyors

1790 W. Victory Way - Craig, Colorado 81625

Telephone (970) 824-3435

FAX (970) 824-3102

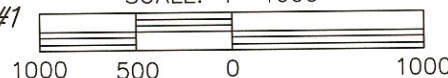
WELL -

CARMACK RESOURCES, INC.

BELNAP #1-NEW NAME-ANAK #1

LOCATED IN THE NE1/4SE1/4 OF  
SECTION 4, T6N, R91W OF THE  
6TH P.M., MOFFAT COUNTY, COLORADO

SCALE: 1"=1000'



LEGEND

- FOUND G.L.O. BRASS CAP
- ⊕ WELL LOCATION
- └ 90° SYMBOL
- APPROX. BOTTOM HOLE
- Ⓐ CALCULATED CORNER



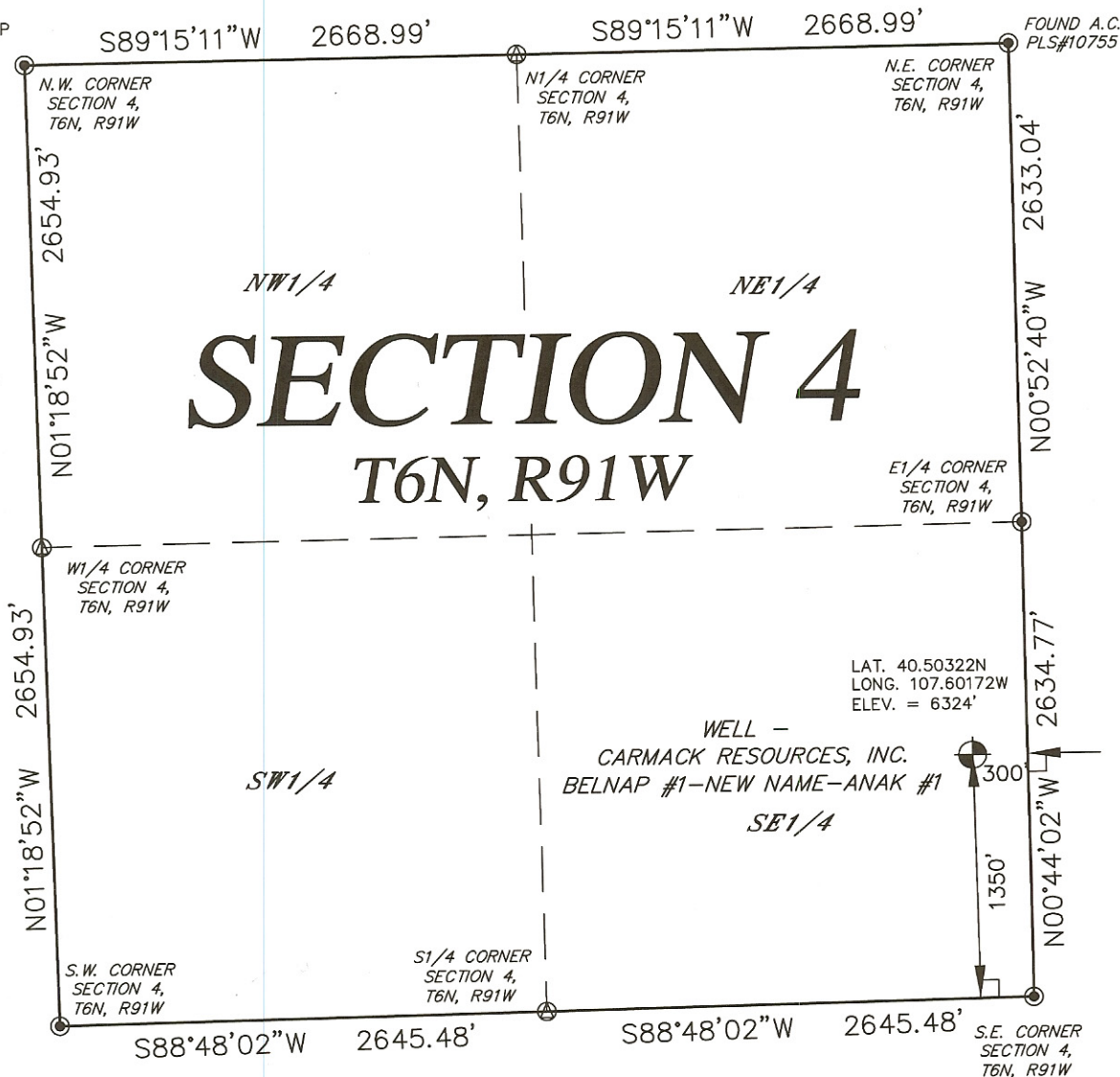
BASIS OF BEARINGS,  
DISTANCES AND ELEVATIONS  
SHOWN ARE TAKEN FROM  
G.P.S. OBSERVATIONS  
(NAD 83)(PDOP - 2.4)  
(APRIL 22, 2010)  
(OPERATOR- B. POWERS)

SURFACE USE

AGRICULTURAL  
LIVESTOCK GRAZING

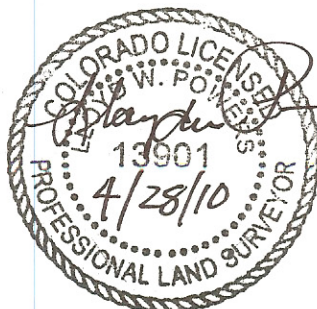
IMPROVEMENTS

NO IMPROVEMENTS  
WITHIN 200 FEET



LAND SURVEYOR'S CERTIFICATE

I, Lloyd W. Powers being a duly registered Professional Land Surveyor do hereby certify that this survey was made by me or under my direct supervision and is based upon my professional knowledge, information and belief and conforms with the applicable standards of practice in the State of Colorado. This certificate does not constitute a guaranty or warranty, either expressed or implied.



Lloyd W. Powers, PLS  
Colorado Reg. No. 13901

10008-CR-B-1-A-1