

**PROPOSED BMP'S  
XTO ENERGY, INC.**

**Certificate to Discharge Under CDPS General Permit No. COR-03000  
Stormwater Discharges Associated with Construction Certification No.  
COR03C483**

- A Field Wide Stormwater Management Plan (SWMP) for the La Plata Infill Program is on file at the XTO Energy Inc. office. A Site Specific SWMP with a Site Plan will be developed for each location.
- Inspections of the project site and maintenance of BMP's installed shall be conducted in accordance with the CDPHE CDPS permit & field wide plan.
- Spill Prevention and Counter Measures (SPCC) for the La Plata Infill Program is on file at the XTO Energy Inc. office. The Field SWMP and Site Specific SWMP each address SPCC during construction operations.

**TABLE 3**  
**STRUCTURAL AND NON-STRUCTURAL BMP CLASSIFICATION**

**LA PLATA INFILL PROGRAM**  
**XTO ENERGY, INC.**

<b>NON-STRUCTURAL BMPs</b>		
<b>Program Oversight</b>	<b>Construction Site Planning and Management</b>	<b>Good Housekeeping/Materials Management</b>
Construction Phase Plan Review Contractor Training and Certification Database Development and Maintenance	Timing of projects Construction Sequencing Site Operator BMP Inspection and Maintenance Training Preserving Natural Vegetation/Buffer Minimize Final Pad Site Acreage	General Construction Site Waste Management Spill Prevention, Control Plan and Countermeasures

<b>STRUCTURAL BMPs</b>		
<b>Erosion Control</b>	<b>Sediment Control</b>	<b>Runoff Control</b>
Dust Control Erosion Control Blanket Gravel Surfacing Mulching Retaining Wall Revegetation Riprap Slope Stabilization Surface Roughening/Ripping Terracing Vegetated Buffer	Brush Matting Filter Berm Land Grading Level Spreader Silt Fence Stabilized Construction Entrance Straw Bale Barrier Vegetated Buffer Wattle Wind Fence	Berm Check Dam Culverts Culvert Protection Diversion Ditch/Ditch&Berm Drainage Dip Roadside Ditch Slope Drain Turnout Water Bar



**TABLE 2  
BMP SELECTION GUIDELINES**

**LA PLATA INFILL PROGRAM  
XTO ENERGY, INC.**

ACTIVE	COMPLETED	FINAL STABILIZATION
<b>Compressor Station, Pipelines</b>		
Berm Brush Matting Check Dams Culverts Culvert Protection Diversion Ditch/Ditch&Berm Drainage Dip Erosion Control Blanket Filter Berm Gravel Surfacing Land Grading Level Spreader Retaining Wall Revegetation Riprap Roadside Ditches Silt Fence Slope Drain Stabilized Construction Entrance Straw Bale Barrier Surface Roughening / Ripping Terracing Turnouts Vegetated Buffer Water Bar Wattles Wind Fence	Berm Brush Matting Check Dams Culverts Culvert Protection Diversion Ditch/Ditch&Berm Drainage Dip Erosion Control Blanket Filter Berm Gravel Surfacing Level Spreader Retaining Wall Riprap Roadside Ditches Silt Fence Slope Drain Straw Bale Barrier Terracing Vegetated Buffer Water Bar Wattles Wind Fence	Berm Check Dams Culverts Culvert Protection Diversion Ditch/Ditch&Berm Drainage Dip Filter Berm Gravel Surfacing Retaining Wall Revegetation Riprap Roadside Ditches Slope Drain Terracing Water Bar
<b>Access Roads</b>		
Berm Brush Matting Check Dams Culverts Culvert Protection Diversion Ditch/Ditch&Berm Drainage Dip Erosion Control Blanket Filter Berm Gravel Surfacing Land Grading Level Spreader Retaining Wall Revegetation Riprap Roadside Ditches Silt Fence	Berm Brush Matting Check Dams Culverts Culvert Protection Diversion Ditch/Ditch&Berm Drainage Dip Erosion Control Blanket Filter Berm Gravel Surfacing Level Spreader Retaining Wall Riprap Roadside Ditches Silt Fence Slope Drain Straw Bale Barrier	Berm Check Dams Culverts Culvert Protection Diversion Ditch/Ditch&Berm Drainage Dip Filter Berm Gravel Surfacing Retaining Wall Revegetation Riprap Roadside Ditches Slope Drain Water Bar



**TABLE 2  
BMP SELECTION GUIDELINES**

**LA PLATA INFILL PROGRAM  
XTO ENERGY, INC.**

ACTIVE	COMPLETED	FINAL STABILIZATION
<b>Access Roads (continued)</b>		
Slope Drain	Vegetated Buffer	
Stabilized Construction Entrance	Water Bar	
Straw Bale Barrier	Wattles	
Surface Roughening/Ripping	Wind Fence	
Turnouts		
Vegetated Buffer		
Water Bar		
Wattles		
Wind Fence		

**Notes:**

BMP = Best Management Practice



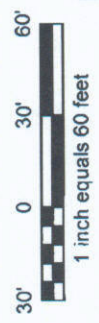
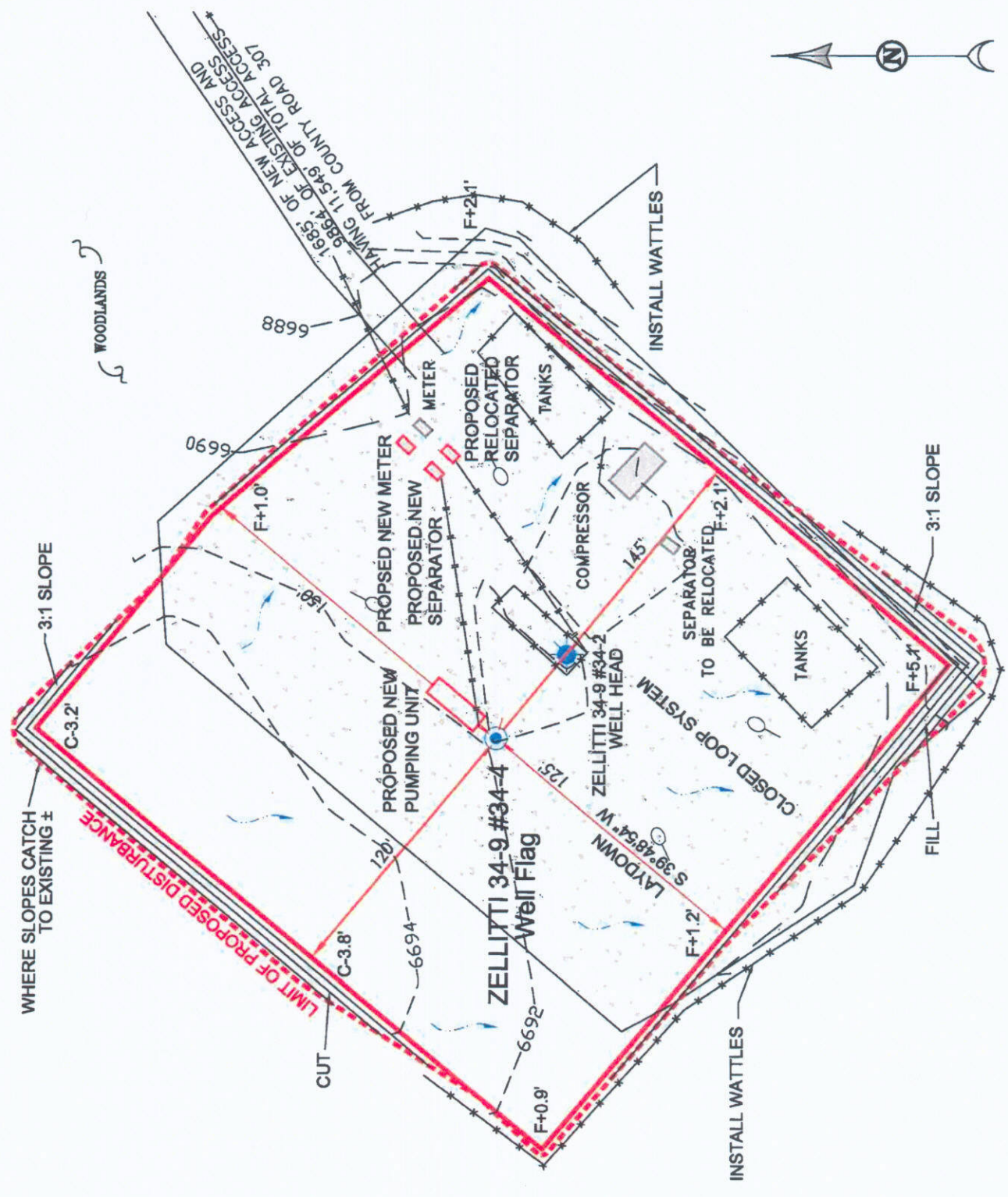
**GRADING AND DRAINAGE PLAN**

XTO ENERGY INC.  
 ZELLITTI 34-9 #34-4  
 SURFACE HOLE: 1166' FSL, 1990' FWL  
 SECTION 34, T-34-N, R-09-W, N.M.P.M.,  
 LA PLATA COUNTY, COLORADO  
 LAT: 37.14317° N LONG: 107.81518° W NAD 83  
 ELEVATION AT STAKE = 6,692' NAVD 88

Legend	
	WELL FLAG
	WELL HEAD
	RIG ANCHOR
	GAS & H2O P/L'S
	FENCE
	BLDG-area
	C/L DRAINAGE
	EDGE POND
	GRAVEL AREA
	MARSH
	SIXTEENTH
	QUARTER
	2 FT. CONTOUR
	DIRECTIONAL ALIGNMENT
	PROPOSED PAD & EQUIPMENT
	TOTAL DISTURBANCE

- NOTES:
- RUSSELL SURVEYING, INC. IS NOT LIABLE FOR UNDERGROUND UTILITIES OR PIPELINES.
  - CONTRACTOR SHOULD CALL ONE-CALL FOR LOCATION OF ANY MARKED OR UNMARKED BURIED PIPELINES OR CABLES ON WELL PAD AND OR ACCESS ROAD AT LEAST THREE (3) WORKING DAYS PRIOR TO CONSTRUCTION.
  - CONTOUR INTERVAL = 2 FT.,
  - SPOILS TO BE HAULED OFF TO EXISTING XTO LOCATION.

**Russell Surveying, Inc.**  
 1409 W. Aztec Blvd. #2  
 Aztec, New Mexico 87410  
 (505) 334-8637  
 JOB# XT0035 DATE: 05/11/10 BY: GRR



# PROPOSED WILDLIFE BMP'S

## Zellitti 34-9 #34-4

### General Operating Practices

- ❖ The Zellitti 34-9 #34-4 will be drilled from an existing wellpad to reduce surface disturbance impacts.
  - Reduces area necessary for well pad construction.
  - Utilize existing infrastructure for operations.
- ❖ A closed-loop mud system will be used during drilling operations.
- ❖ Surface equipment that could be potentially damaging to wildlife will be fenced with cattle panels.
  - Prevents wildlife entry to potentially harmful equipment.
- ❖ Facility is gated in order to restrict general public access. This location shares the same access road as the Hocker Gravel Mine.
- ❖ Standard wildlife friendly seed mixes developed by the CDOW specifically for the San Juan Basin will be used for reclamation.
- ❖ Construction, drilling and completion activities will be scheduled to avoid critical winter use periods for deer and elk December 1 - April 15.
- ❖ Recycle drilling fluids.
  - Mud systems are dewatered, recycled and water is reused during drilling operations, reducing the amount of water needed to be trucked for drilling operations.
  - Mud can be transported to next drilling location, reducing truck traffic to dispose of drilling fluids.
- ❖ Adhere to the developed weed management plan pursuant to both the La Plata County Land Use Code and Colorado Noxious Weed Act.
  - Protects the productivity of adjacent wildlife habitats.
- ❖ Screen exhaust and vent stacks to preclude avian perching.
- ❖ Educate employees and contractors on wildlife conservation practices, including no harassment or feeding of wildlife.
- ❖ Forbid use of firearms and dogs on location.
- ❖ Utilize bear proof dumpsters and trash receptacles for food related trash at all facilities that generate such trash.